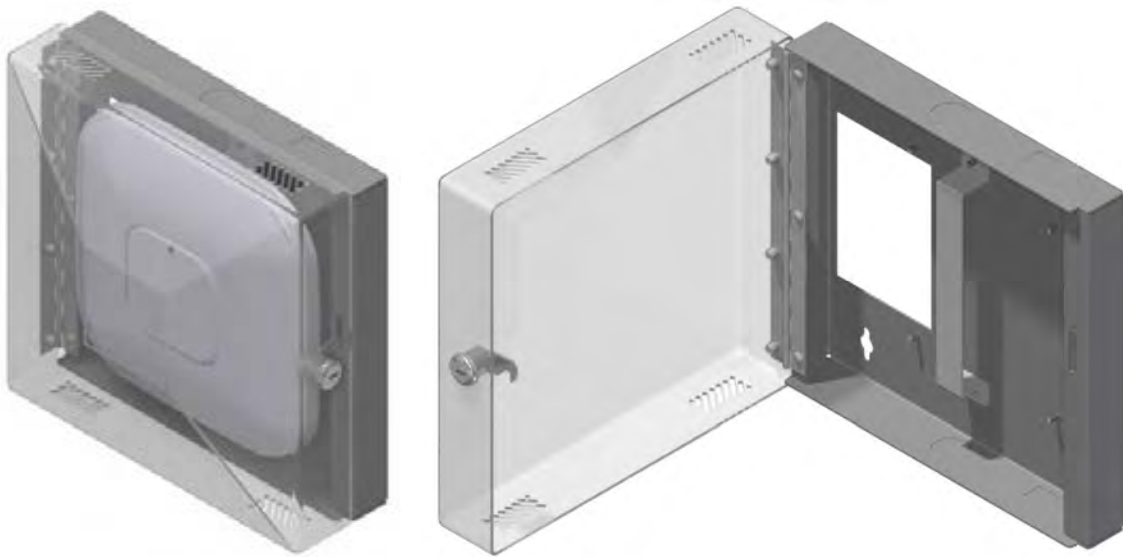


Model 1032-C

"Hard-Lid" Ceiling or Wall Mount Enclosure for WAPS

Oberon's Model 1032-C "hard lid" or wall mount enclosure provides a secure, aesthetic, convenient mounting solution for wireless access points from many vendors. This economical enclosure has an impact resistant, clear, lockable clear polycarbonate cover so that wireless access points with integrated or non-detachable antennas can be secured in otherwise unsecured spaces. The product is designed to provide an unobtrusive mounting solution. Locks are keyed-alike to simplify moves, adds, and changes.



Model 1032-C shown with Cisco Wireless AP (Not included)

Specifications:

- Wireless access point enclosure designed to be surface mounted on "hard-lid" ceilings or walls.
- Economical solution for securing wireless access points and DAS remotes with integrated or non-detachable antennas, from most vendors
- Construction: 16 gauge powder coated steel back box, UL 94-V2 clear polycarbonate cover
- Fully hinged locking cover is impact resistant and transparent to wireless signals
- Knockouts for 3/4" trade conduit connectors, and snap-in keystone jacks and connectors
- Opening in back box for wall jack
- Size: 11" x 11" x 4.4" (total depth)
- Weight: 4.5 lbs (not including access point)

Model 1032-C Includes:

- (1) Universal "T-Bar" mounting bracket
- (2) Keys for lock
- (4) # 6-32 x 3/16 Screws
- (4) # 8-32 x 3/16 Screw
- Mounting Instructions