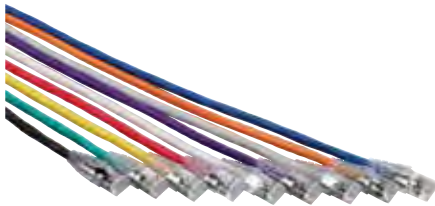


# Category 6A Unshielded Cable Assemblies



TE Connectivity's Category 6A unshielded patch cable assemblies are manufactured using patented techniques that create consistent performance superior to standard cable assemblies. TE Connectivity's Category 6A unshielded cable assemblies are CM (riser) rated and constructed using colored, stranded cable and clear polycarbonate snagless boots.

## FEATURES & BENEFITS:

- Meets or exceeds the channel specifications of ANSI/TIA-568-C.2 Category 6A unshielded and Amendment 1 to ISO/IEC 11801:2002 Class EA up to 500 MHz when used as a component in a properly installed TE UTP channel
- Reduced cable assembly OD .23 inches or 24% smaller
- Meets or exceeds all requirements for IEEE 802.3an 10 GbE
- Clear, flexible, strain relief boot maintains proper bend radius to ensure peak performance
- Non-plenum (CM rated)
- Universal wiring (T568A/T568B)
- RoHS compliant
- UL 1863 Listed

## Category 6A Unshielded Cable Assemblies

### SPECIFICATION (TEXT IN BRACKETS [ ] REQUIRES A CHOICE):

Category 6A unshielded patch cable assemblies are constructed using modular plugs with 50µm gold-plated contacts, and support T568A or T568B wiring patterns. Cable assemblies utilize colored cable and "snagless" cable boots. Cable assemblies are constructed of stranded conductors, covered with [black, gray, blue, green, red, white, yellow, orange or violet] colored jacket. Cable meets all the requirements of ANSI/TIA-568-C as well as the performance requirements listed in the following table:

Channel Performance Characteristics (meet or exceed ANSI/EIA/TIA, ISO/IEC and IEEE requirements)

Frequency (MHz)	Insertion Loss (dB)	NEXT (dB)	PSNEXT (dB)	ACRF (dB)	PSACRF (dB)	Return Loss (dB)	Prop Delay (ns/100m)	Prop Delay Skew (ns)	TCL (dB)	ELTCL / TCTL (dB)	PSANEXT (dB)	PSAACRF / PSAFEXT (dB)
0.772	-2.1	-65.0	-62.0	-65.5	-62.5	-19.0	585.0	50.0	-40.0	32.2	-67.0	-67.0
1	-2.3	-65.0	-62.0	-63.3	-60.3	-19.0	580.0	50.0	-40.0	30.0	-67.0	-67.0
4	-4.2	-63.0	-60.5	-51.2	-48.2	-19.0	562.0	50.0	-40.0	18.0	-67.0	-65.0
8	-5.8	-58.2	-55.6	-45.2	-42.2	-19.0	556.7	50.0	-39.5	11.9	-67.0	-58.9
10	-6.5	-56.6	-54.0	-43.3	-40.3	-19.0	555.4	50.0	-38.0	10.0	-67.0	-57.0
16	-8.2	-53.2	-50.6	-39.2	-36.2	-18.0	553.0	50.0	-34.9	5.9	-67.0	-52.9
20	-9.2	-51.6	-49.0	-37.2	-34.2	-17.5	552.0	50.0	-33.5	4.0	-67.0	-51.0
25	-10.2	-50.0	-47.3	-35.3	-32.3	-17.0	551.2	50.0	-32.0	2.0	-66.0	-49.0
31.25	-11.5	-48.4	-45.7	-33.4	-30.4	-16.5	550.4	50.0	-30.4	N/A	-65.1	-47.1
62.5	-16.4	-43.4	-40.6	-27.3	-24.3	-14.0	548.6	50.0	-24.4	N/A	-62.0	-41.1
100	-20.9	-39.9	-37.1	-23.3	-20.3	-12.0	547.6	50.0	-20.3	N/A	-60.0	-37.0
200	-30.1	-34.8	-31.9	-17.2	-14.2	-9.0	546.5	50.0	-14.3	N/A	-55.5	-31.0
250	-33.9	-33.1	-30.2	-15.3	-12.3	-8.0	546.3	50.0	-12.3	N/A	-54.0	-29.0
300	-37.4	-31.7	-28.8	-13.7	-10.7	-7.2	546.1	50.0	-10.8	N/A	-52.8	-27.5
400	-43.6	-28.7	-25.8	-11.2	-8.2	-6.0	545.8	50	-8.3	N/A	-51.0	-24.9
500	-49.3	-26.1	-23.2	-9.28	-6.3	-6.0	545.6	50	-6.3	N/A	-49.5	-23.0

### ORDERING INFORMATION

Product Description	*Part Number
RJ45 to RJ45 T568B patch cord	TCPC-6ARUVB-XXYYF
RJ45 to RJ45 T568A patch cord	TCPC-6ARUVA-XXYYF

\*Replace XX for color:

WT = White  
RD = Red  
BL = Blue

YL = Yellow  
GN = Green  
GY = Gray

\*Replace YY for length:

04 = 4'  
07 = 7'  
10 = 10'

15 = 15'  
25 = 25'  
50 = 50'

Contact TE for information on additional colors and custom lengths.

## DATA SHEET

**Contact us:**  
Greensboro, NC  
USA 27409-8420  
Tel: 1-800-553-0938  
Fax: 1-717-986-7406

[www.te.com/EnterpriseNetworks](http://www.te.com/EnterpriseNetworks)



TE Connectivity, TE connectivity (logo), Tyco Electronics, and TE (logo) are trademarks of the TE Connectivity Ltd. family of companies and its licensors.

While TE Connectivity has made every reasonable effort to ensure the accuracy of the information in this document, TE Connectivity does not guarantee that it is error-free, nor does TE Connectivity make any other representation, warranty or guarantee that the information is accurate, correct, reliable or current. TE Connectivity reserves the right to make any adjustments to the information contained herein at any time without notice. TE Connectivity expressly disclaims all implied warranties regarding the information contained herein, including, but not limited to, any implied warranties of merchantability or fitness for a particular purpose. The dimensions in this document are for reference purposes only and are subject to change without notice. Specifications are subject to change without notice. Consult TE Connectivity for the latest dimensions and design specifications.

Tyco Electronics Corporation, a TE Connectivity Ltd. Company. All Rights Reserved.

316820AE 4/13 Original © 2013