

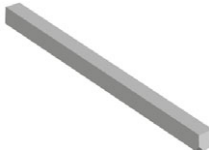
# Ordering information

## Accessories

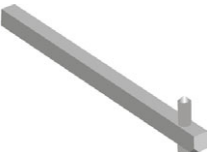
OXS6X\_  
S01026A



OX6X\_  
S04118



OSP6X\_  
S00050A



### Shafts

The type and ordering numbers are for one piece

| Shaft length [mm]  | H [mm]                 | Suitable for switches     | Type     | Order number    | Delivery batch [pcs] | Weight/unit [kg] |
|--|------------------------|---------------------------|----------|-----------------|----------------------|------------------|
| <b>For selector type handles, shaft diameter 6 mm</b>          |                        |                           |          |                 |                      |                  |
| 85   | See dimension drawings | OT16...125F, OTDC16...32F | OXS6X85  | 1SCA101647R1001 | 10                   | 0.02             |
| 105  |                        | OT16...125F, OTDC16...32F | OXS6X105 | 1SCA108043R1001 | 10                   | 0.02             |
| 120  |                        | OT16...125F, OTDC16...32F | OXS6X120 | 1SCA101654R1001 | 10                   | 0.03             |
| 130  |                        | OT16...125F, OTDC16...32F | OXS6X130 | 1SCA101655R1001 | 10                   | 0.03             |
| 160  |                        | OT16...125F, OTDC16...32F | OXS6X160 | 1SCA101656R1001 | 10                   | 0.04             |
| 180  |                        | OT16...125F               | OXS6X180 | 1SCA101659R1001 | 10                   | 0.04             |
| 250  |                        | OT16...125F               | OXS6X250 | 1SCA101660R1001 | 10                   | 0.05             |
| 330  |                        | OT16...125F               | OXS6X330 | 1SCA101661R1001 | 10                   | 0.05             |
| <b>For round padlockable type handles, shaft diameter 6 mm</b> |                        |                           |          |                 |                      |                  |
| 60   | See dimension drawings | OT16...125F               | OX6X60   | 1SCA111459R1001 | 10                   | 0.02             |
| 85   |                        | OT16...125F               | OX6X85   | 1SCA111274R1001 | 10                   | 0.02             |
| 105  |                        | OT16...125F               | OX6X105  | 1SCA111930R1001 | 10                   | 0.02             |
| 115  |                        | OT16...125F               | OX6X115  | 1SCA111931R1001 | 10                   | 0.03             |
| 130  |                        | OT16...125F               | OX6X130  | 1SCA111460R1001 | 10                   | 0.03             |
| 155  |                        | OT16...125F               | OX6X155  | 1SCA111275R1001 | 10                   | 0.04             |
| 200  |                        | OT16...125F               | OX6X200  | 1SCA111932R1001 | 10                   | 0.04             |
| 300  |                        | OT16...125F               | OX6X300  | 1SCA111933R1001 | 10                   | 0.05             |
| <b>For pistol type handles, shaft diameter 6 mm.</b>           |                        |                           |          |                 |                      |                  |
| 150  | See dimension drawings | OT16...125F               | OSP6X150 | 1SCA022295R5600 | 10                   | 0.05             |
| 170  |                        | OT16...125F               | OSP6X170 | 1SCA108224R1001 | 10                   | 0.05             |
| 265  |                        | OT16...125F               | OSP6X265 | 1SCA108225R1001 | 10                   | 0.08             |
| 400  |                        | OT16...125F               | OSP6X400 | 1SCA108226R1001 | 10                   | 0.12             |
| <b>Shaft diameter 6 mm <sup>1)</sup></b>                       |                        |                           |          |                 |                      |                  |
| 130  | 109...174              | OT160EV...250             | OSP6X130 | 1SCA022057R0570 | 10                   | 0.04             |
| 150  | 129...194              | OT160EV...250             | OSP6X150 | 1SCA022295R5600 | 10                   | 0.05             |
| 161  | 140...205              | OT160EV...250             | OSP6X161 | 1SCA022067R1760 | 10                   | 0.05             |
| 210  | 189...254              | OT160EV...250             | OSP6X210 | 1SCA022295R6080 | 10                   | 0.06             |
| 290  | 269...334              | OT160EV...250             | OSP6X290 | 1SCA022042R6370 | 10                   | 0.08             |

<sup>1)</sup> Longer shafts on request