

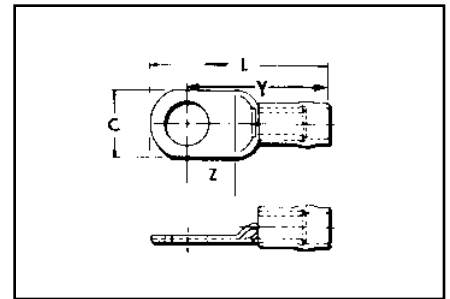
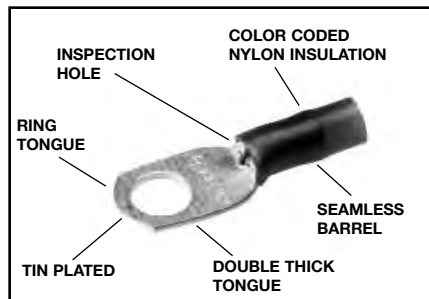
## TYPES YAEV AND YAEV-L

### INSULUG™

Terminal — Nylon Insulated —  
Ring-Tongue

300 Volts Max., 105° C Max.

The INSULUG™ type YAEV is designed for very demanding high vibration applications encountered in aircraft and aboard ships as well as motor lead applications in hospitals, industrials and generating plants. The nylon insulated seamless, electrolytic copper barrel with double thick tongue provides an extra strong insulated connection. The terminal is rated 105°C and meets SAE-AS7928 requirements.



### Features and Benefits

- Double thick tongue.
  - ◇ Provides maximum reliability and electrical capacity plus an extra strong terminal tongue.
- Manufactured from one-piece pure electrolytic copper.
  - ◇ Provides high conductivity, low resistance with no seams to split plus ductility for excellent crimp forming properties.
- Electro-tin plated.
  - ◇ Provides long-lasting corrosion resistance.
- Nylon insulation is locked in place.
  - ◇ Insulation will not move or twist off.
- 300 volt nylon insulation.
  - ◇ High dielectric strength and stability in demanding oily environmental conditions.
- Color Coded.
  - ◇ Provides quick, easy wire size connector selection.

Catalog Number	Wire Range AWG AN Aircraft	Stud Size	AS25036-Dash No.	Dimensions				Bulk Catalog Number	Installation Tooling	Wire Strip Length
				C	Z Min.	Y Max.	L Max.			
<b>YAEV18 BOX</b>	22-18 Max. Insul. Dia. Accom.: .125 Color Code: Red	8-10	—	.31	.24	.77	.91	<b>YAEV18</b>	Ratchet: MR8D94	1/4"
<b>YAEV14 BOX</b>	18-14 Max. Insul. Dia. Accom.: .154 Color Code: Blue	8-10	—	.31	.24	.88	.94	<b>YAEV14</b>	Ratchet: MR8D94	1/4"
<b>YAEV10-T7 BOX</b>	12-10 Max. Insul. Dia. Accom.: .209 Color Code: Yellow	4-5	—	.30	.24	.95	1.09	<b>YAEV10-T7</b>	Ratchet: MR8D94 MR8-33-T1 M8ND with N10ET-9 Die MR4 10M MR18*	5/16"
<b>YAEV10-T11 BOX</b>		6-8	—	.37	.26	.97	1.14	<b>YAEV10-T11</b>		
<b>YAEV10 BOX</b>		8-10	—	.37	.26	.97	1.14	<b>YAEV10</b>		
<b>YAEV10-L36 BOX</b>		8-10	—	.30	.18	.89	1.04	<b>YAEV10-L36</b>		
<b>YAEV10-T3 BOX</b>		1/4	—	.47	.38	1.12	1.30	<b>YAEV10-T3</b>		
<b>YAEV10-T2 BOX</b>		5/16	—	.53	.31	1.12	1.30	<b>YAEV10-T2</b>		
<b>YAEV10-T4 BOX</b>		3/8	—	.56	.35	1.12	1.35	<b>YAEV10-T4</b>		

\* #10 wire only.

Blue highlighted items are industry standard and most frequently ordered.