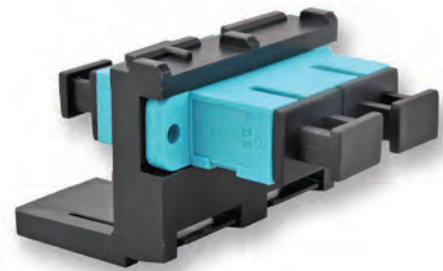


# LANS Adapter Module, SC duplex, ceramic sleeve

50 µm multimode (OM3/4)

CORNING

LANS SC duplex Adapter Modules fit all LANS/LANC housings and are available in either black or white.



Part Number: LANS-MOD-E7-B

## Specifications

### General Specifications

Fibre Category	50 µm MM (OM3/OM4/OM4 extended 10G distance)
----------------	--

### Design - Hardware

Housing Material	Composite
Number of Adapters	1
Colour	Black

### Mechanical characteristics

Dimensions (H x W)	25 mm x 36 mm
Weight	0.0119 kg

# LANS Adapter Module, SC duplex, ceramic sleeve

50 µm multimode (OM3/4)

CORNING

## Design Adapter

Adapter Type	SC duplex
Adapter Housing Material	Composite
Adapter Housing Color	Turquoise
Insert Material	Ceramic
Keyed adapter	No
Shuttered adapter	No

## Ordering Information

Part Number	LANS-MOD-E7-B
Product Description	LANS Adapter Module, black, SC duplex, turquoise OM3/4

## Shipping Information

Packing dimensions (L x W x H)	180 mm x 250 mm x 180 mm
Shipping Weight	0.5 kg
Units per Delivery	1/1



Corning Cable Systems GmbH & Co. KG · Leipziger Strasse 121 · 10117 Berlin, Germany

TEL: 00800-2676-4641 (00800-CORNING1) · FAX: +49-30-5303-2335 · [www.corning.com/cablesystems/emea](http://www.corning.com/cablesystems/emea)

A complete listing of the trademarks of Corning Cable Systems is available at [www.corning.com/cablesystems/emea/trademarks](http://www.corning.com/cablesystems/emea/trademarks). Corning Cable Systems is ISO 9001 certified. © 2013 Corning Cable Systems. All rights reserved.