

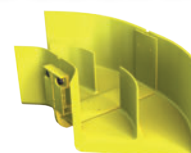
OptiWay - Optical pathway system



OptiWay is designed to provide a safe, easy to use and cost effective management system for your fragile optical cables. OptiWay allows you to route fiber optic cables among equipment and provides the physical protection and bend radius management that is crucial to optical cable performance.

- Designed for fiber-optical cables and high density structured networks
- Flame retardant and halogen-free material
- Solution intended for data centers
- Fully modular and flexible system

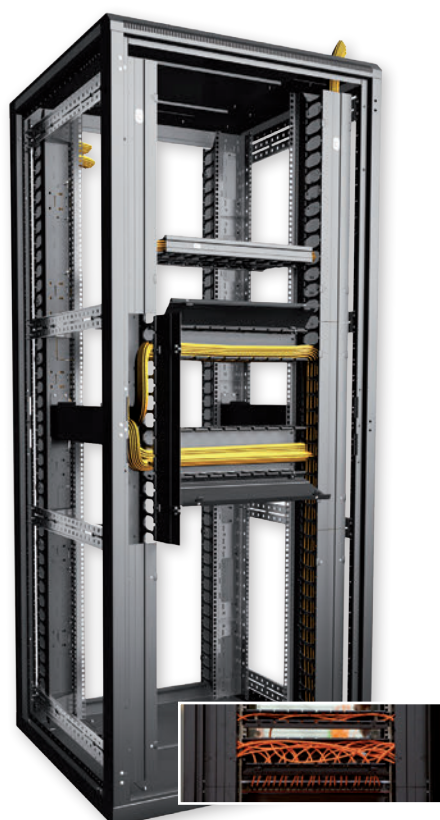
OPTIWAY®



High Density Wire Managers

The new range of High Density Wire Managers from CONTEG ensures that cabling can be properly managed while maintaining the proper bend radii for today's high speed data cabling and helping to optimize network throughput.

- Made of high quality materials
- Ease of use - cover can be opened to the right, to the left or completely removed to get unhindered access
- Fully compatible with RSF, RDF, RHF, ROF racks and RSG2 and RSG4 frames
- Comprehensive solution with excellent design
- Available in horizontal and vertical configurations
- Effective bend radius management
- Vertical managers for racks (VMR series) can be used only in racks 800mm width



product	code
High Density Wire Managers	
Horizontal Manager 1U ¹⁾ x 10 finger front only with removable cover, (HxWxD) 1U x 19" x 112mm	HDWM-HM-1F ¹⁾
Vertical Manager (Rack) with three section removable cover, 41 fingers, front only, (HxWxD) 42U ²⁾ x 100 x 126 mm, 10 Velcro ties	HDWM-VMR-42 ²⁾ -12/10F
Vertical Manager (Rack) - one row, 41 fingers, front only, (HxD) 42U ²⁾ x 126 mm, 5pcs Velcro Cable Ties-small, 13 mm x 190 mm, compatible with L-type ⁷⁾ of extrusion, black, 1pcs	HDWM-VMR-42 ²⁾ -12L ⁷⁾
Vertical Manager (Frame) with three section removable cover, 41 fingers, front only, (HxWxD) 42U ²⁾ x 200 x 151 mm ³⁾ , 10 Velcro ties	HDWM-VMF-42 ²⁾ -15/20F ³⁾
Front duct system , compatible with HDWM-VMF-xx-yy/20F ⁴⁾ installed on the left-hand side, 1x cable radius protector included	HDWM-FDF-S3-20L ⁴⁾
Adjustable Cable Trough manages cables between front and rear mounted VMR ⁵⁾ , includes top radius	HDWM-VMR ⁵⁾ -ACT
Fibre Slack Storage Spool Kit 100 mm ⁶⁾ deep, pair	HDWM-FSS-100 ⁶⁾

Optimize your cable management with HDWM

¹⁾ 2U and 3U variants available also models with front-rear cable through and models with brushes

²⁾ instead of 42U is possible order 45U

³⁾ other sizes available (25/20F, 25/30F)

⁴⁾ other size and orientations available

⁵⁾ variant for open frames available - VMF

⁶⁾ other size 50mm available

⁷⁾ P-type of extrusion model available