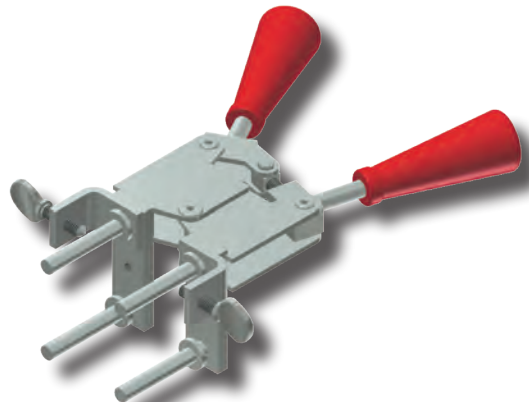


HANDLE CLAMPS

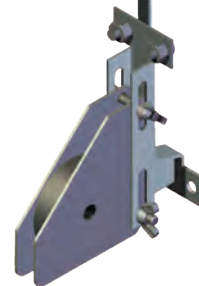
B-106 & B-107 HANDLE CLAMPS

For most connections involving lugs, cable or rectangular bus, thermOweld® Handle Clamps are used. thermOweld® Handle Clamps make possible the use of many different sizes and types of molds with only two different clamps. The two handle clamps are catalog numbers B-106 and B-107. These will fit of all standard thermOweld® molds.

1. Use B-106 clamps for all molds having a price key 4, 7, 17, 22 or 24. These molds are a nominal 3 1/8" wide molds.
2. Use B-107 clamps for all molds having a price key 5, 6, 8, 13 or 23. These molds are a nominal 4" wide molds.
3. All molds having a price key 2, 3, 9, 10, 11, 12, 14, 15, 16 or 33 have an attached frame; separate handles are not required.



Part # 40-7202-00
SHOWN WITH HANDLE



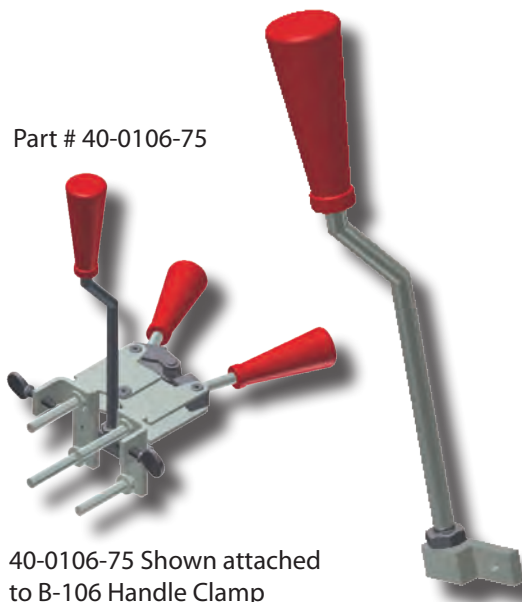
PK-3 MAGNETIC CLAMP

The PK-3 integral magnetic clamp is adaptable to all thermOweld® price key 3 molds. A strong, 55 lb. magnet holds the mold in place and prevents leakage. Works on both cast iron and steel and can be used to weld to both pipe as well as flat surfaces. Designed for remote welding, using our thermOweld® EZ Lite Remote® ignition system. See page 145 for more information.

PK-14 HANDLE ATTACHMENT

The PK-14 Handle Attachment is used to hold a PK-14 molds in position. It is easily attached to the B-106 Handle Clamps. The PK-14 Handle Attachment can be used with weld types CRE-1 and CRE-4.

Part # 40-0106-75

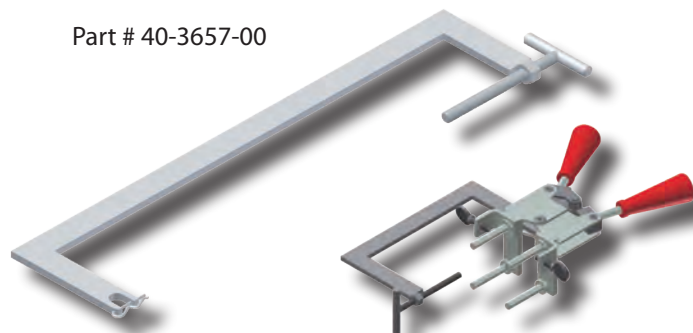


40-0106-75 Shown attached to B-106 Handle Clamp

MOLD SUPPORT CLAMP

The Mold Support Clamp is used to hold a mold in position on a vertical steel column or angle. It is easily attached to the Handle Clamps. The Mold Support Clamp can be used with weld types CS-3, CS-18, CS-23 and CS-27.

Part # 40-3657-00

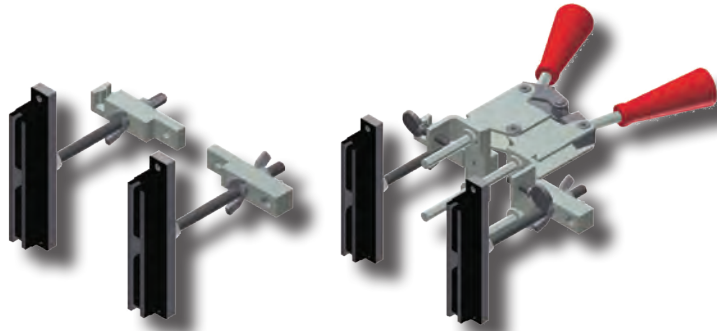


40-3657-00 Shown attached to B-106 Handle Clamp

HANDLE CLAMPS

VERTICAL MAGNETIC CLAMPS

thermOweld® Magnetic Clamp is used to hold a mold in position on a vertical steel surface. The magnetic clamp can be purchased complete with B-106 Handle Clamps or if you already have a set of handles, you can order just the magnetic mounting assembly. The mounting assembly can easily be mounted on the prongs of your existing B-106 handle clamps. A minimum of 10" is required.



40-4431-01

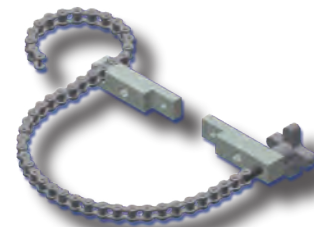
40-4431-00

Vertical Magnetic Handle Clamps (Complete with B-106 Handle Clamp)		
Catalog #	Fits Molds w/ Price Key	For Use With Weld Types
40-4431-00	4 & 17	CS-3, 4, 7 & 23
Vertical Magnetic Clamp Only (Handle Clamp Not Included)		
Catalog #	Fits Handle Clamp	For Use With Weld Types
40-4431-01	B-106/B-107	CS-3, 4, 7 & 23

HORIZONTAL & VERTICAL CHAIN CLAMPS

thermOweld® Chain Clamps are used to hold a mold in position on horizontal or vertical pipe up to 4" in diameter. For larger pipe a 20" chain extension is available to allow the chain clamps to be used on pipe up to 10" in diameter. The chain clamp can be purchased complete with B-106 or B-107 Handle Clamps or if you already have a set of clamps, you can order just the chain clamp and mounting assembly. The mounting assembly can easily attach to your existing thermOweld® Handle Clamps. 20" Chain Extension part #40-0106-27.

Chain Clamps (Complete with Handle Clamps)				
Catalog #	Fits Molds w/ Price Key	For Use With Weld Types	Pipe Position	
40-0106-32	4, 17, 22 & 24	CS-3, 4, 7, 23 & CRE-6	Vertical	
40-0107-32	5, 6 & 23	CS-3, 4, 7 & 23	Vertical	
40-0106-37	4, 17, 22 & 24	CS-1, 2, 5, 8 & 9	Horizontal	
40-0107-37	5, 6 & 23	CS-1, 2, 5, 8 & 9	Horizontal	
40-0106-41	4, 17	CS-6, 18 & CRE-3	Vertical	
Chain Clamp Only (Handle Clamps Not Included)				
Catalog #	Fits Handle Clamp	For Use With Weld Types	Pipe Position	
40-0106-76	B-106 & B-107	CS-3, 4, 7, 23 & CRE-6	Vertical	
40-0106-78	B-106 & B-107	CS-1, 2, 5, 8 & 9	Horizontal	
40-0106-77	B-106 & B-107	CS-6, 18 & CRE-3	Vertical	



40-0106-76



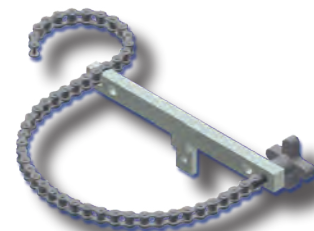
40-0106-32



40-0106-78



40-0106-41



40-0106-77