

Pretium® Connector Housing

2 rack units, holds 4 CCH connector panels

CORNING

Corning Cable Systems offers a variety of Pretium® Connector Housings designed for the LAN and data center environment. Mountable in 19- or 23-in (optional) equipment racks or cabinets, the housings are four inches deeper than standard connector housings and provide easy, open access to connectors for cleaning, moves and additions or other changes.

The PCH-01U and PCH-02U have a removable latching top that slides forward to provide superior access to interior components after installation. These housings accept two and four Corning Cable Systems CCH connector panels or modules. The panels and modules are available in a wide variety of port counts and connector styles, with blank panels providing a finished look for unused positions.

The PCH-04U accepts 12 CCH connector panels or modules and contains an integral hinged horizontal jumper manager on the front of the housing. The manager can be locked in the “up” position for an additional 1U of horizontal jumper management. Left in the default “down” position, it provides additional capacity for jumper routing along the top of the housing for a true Zero-U solution.

The units include the patented universal cable clamp for cable strain-relief and optional splicing accessories are available. The housings have rugged metal construction and are shipped with everything needed for installation.

Features and Benefits

Compatible with Plug & Play™ Systems modules

Designed to support Plug & Play Systems applications

Splice in the housing

Saves rack space and the cost of the second housing

Removable top (1U, 2U)

Maximizes ease of access

Transparent front door (04U and 02U)

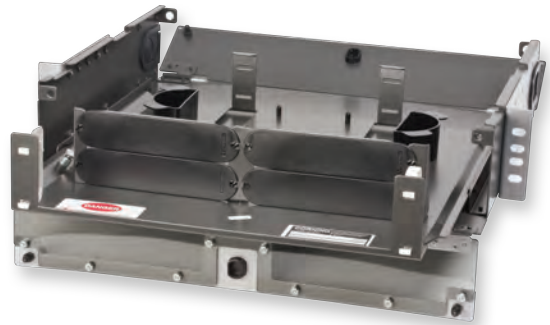
Permits viewing while protecting installed patch cords

Large removable fiber guides in front

Effectively manage high patch cord densities



Part Number: PCH-02U



Part Number: PCH-02U

CORNING

Pretium® Connector Housing

2 rack units, holds 4 CCH connector panels

CORNING

Specifications

General Specifications

Application	Enterprise Networks, Data Center
Mounting Type	Rack 19-in, Rack 23-in
Product Type	Rack-Mountable Hardware

Design - Hardware

Housing Type	PCH
Housing Color	Gray
Height Unit	1U
Locking Availability	Front or rear
Maximum Number of Panels per Housing	4
Panel or Module Type	CCH
Splice Tray Options	6 category, 2R, 2S, 2S-Long, 3 category 4R, 4S, 4S-Wide
Fiber Capacity	Up to 48 fibers installing FC/SC/ ST® Compatible connectors, or up to 96 installing LC connectors

Mechanical Characteristics

Dimensions (HxWxD)	9 cm x 43 cm x 42 cm (3.5 in x 17 in x 16.5 in)
--------------------	---

Chemical Characteristics

RoHS	Free of hazardous substances according to RoHS 2002/95/EG
------	---

Ordering Information

Part Number	PCH-02U
Product Description	Pretium® Connector Housing, 2 rack units, holds 4 CCH connector panels

Pretium® Connector Housing

2 rack units, holds 4 CCH connector panels

CORNING

Shipping Information

Units per Delivery	1/1
Shipping Weight	5.7 kg (12.6 lb)
Package Contents	Housing; Installation Guide; 4 blank panels; unit ID label; 2 port identification labels for 2 panels; 3 #6-32 x .25 screws; 8 #10-32 x 50 screws; 4 #12-24 x 50 screws; 8 1/8 x 4-in tie wraps, white; spiral wrap, 2 ft; central member strain-relief clamp kit; bracket for mounting UCC clamp; universal cable clamp (UCC) kit with 5 cable inserts; double-sided velcro, 5/8-in; bracket to hold BTF kit; 2 #6-32, SS nylon self-locking hex nut



Corning Cable Systems LLC • PO Box 489 • Hickory, NC 28603-0489 USA

800-743-2675 • FAX: 828-325-5060 • International: +1-828-901-5000 • www.corning.com/cablesystems

A complete listing of the trademarks of Corning Cable Systems is available at www.corning.com/cablesystems/trademarks.

Corning Cable Systems is ISO 9001 certified. © 2012 Corning Cable Systems. All rights reserved.

CORNING