

# Wall-Mountable Splice Housings (WSH)

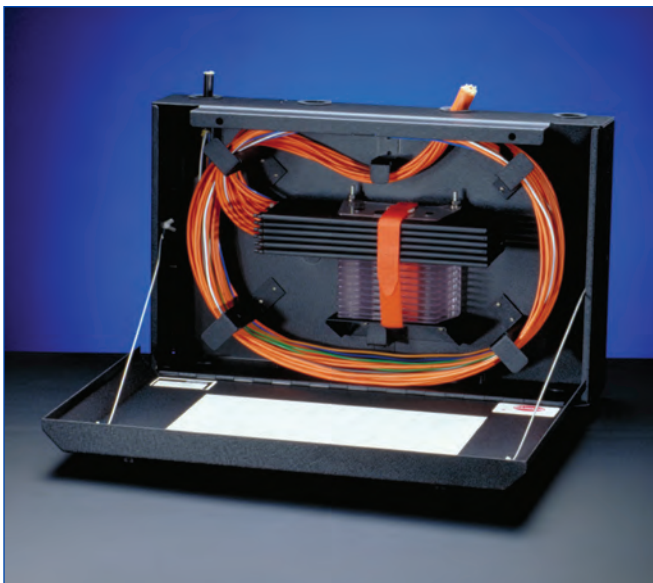
A LANscape®  
Solutions Product

## features and benefits |

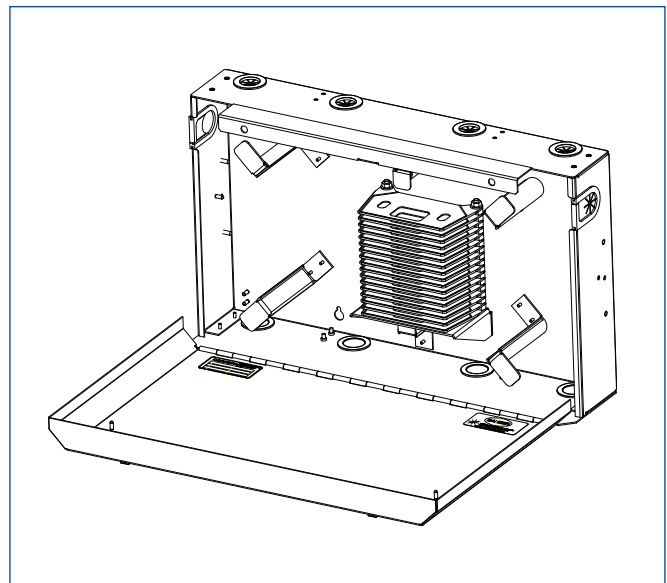
<b>Front door can be used as a work surface</b>	Convenience for splicing
<b>Use with LANscape® Solutions WCH-12P</b>	System compatibility
<b>Provides midspan access capability</b>	System access
<b>Universal cable clamp</b>	Cable strain-relief

Corning Cable Systems Wall-Mountable Splice Housing (WSH) provides storage and protection of fiber splices in individually accessible trays. The wall-mountable housing is designed to store the optical fibers being spliced within the tray and can accommodate either (16) 0.2 in (Type 2S or 2R) or (11) 0.4 in (Type 4S or 4R) splice trays. The front door of the housing is a work surface that can support the weight of a fusion splicer and features a lip around the door to help retain loose items.

Multiple cable entry/exit locations are provided on the top and bottom and grommets prevent dust from entering the housing. Depending on the entry location of the cables into the housing, the strain-relief bracket can be moved to a variety of positions. The design also includes the Corning Cable Systems Universal Cable Clamp and provisions for mounting an optional grounding kit. The WSH can be used in conjunction with a wall-mountable connector housing (WCH) for termination. The cable entry/exit locations line up with cable entries on the WCH-12P.



Wall-Mountable Splice Housing | Photo LAN312



Wall-Mountable Splice Housing (WSH-16SPT)  
| Drawing ZA-2983

# Wall-Mountable Splice Housings (WSH)

A LANscape®  
Solutions Product

## specifications |

	Dimensions (H x W x D) cm (in)	Shipping Weight kg (lb)
<b>WSH-16SPT</b>	34 x 57 x 13 (13.5 x 22.5 x 5.2)	4.1 (9)
<b>WSH-11SPT-F</b>	34 x 57 x 13 (13.5 x 22.5 x 5.2)	4.1 (9)

## ordering information |

Part Number	Description
<b>WSH-16SPT</b>	Wall-Mountable Splice Housing; accepts up to (16) 0.2 in (Type 2S, 2R or 2M) splice trays
<b>WSH-11SPT-F</b>	Wall-Mountable Splice Housing; accepts up to (11) 0.4 in (Type 4S, 4R or 4A) splice trays
<b>Accessories</b>	
<b>GROUND-KIT-2</b>	WSH Grounding Kit; includes a grounding bar and hardware
<b>BKT-ALL-R23-75</b>	Universal Rack-Mount Bracket for 48 cm (19 in) and 58 cm (23 in) equipment racks
<b>HDWR-LOCK-KIT</b>	Lock Kit for front door of housing; contains 1 lock with 2 keys

*Note: Splice trays must be ordered separately.*

Corning Cable Systems LLC • PO Box 489 • Hickory, NC 28603-0489 USA  
800-743-2675 • FAX: 828-325-5060 • International: +1-828-901-5000 • [www.corning.com/cablesystems](http://www.corning.com/cablesystems)

Corning Cable Systems reserves the right to improve, enhance and modify the features and specifications of Corning Cable Systems products without prior notification. LANscape is a registered trademark of Corning Cable Systems Brands, Inc. All other trademarks are the properties of their respective owners. Corning Cable Systems is ISO 9001 certified.  
© 1999, 2010 Corning Cable Systems. All rights reserved. Published in the USA. LAN-399-EN / September 2010