

related literature |

LAN-133-EN Closet Connector Housing Panels (CCH-CP)

- Visit www.corning.com/cablesystems/safety for full safety precautions

Precautions



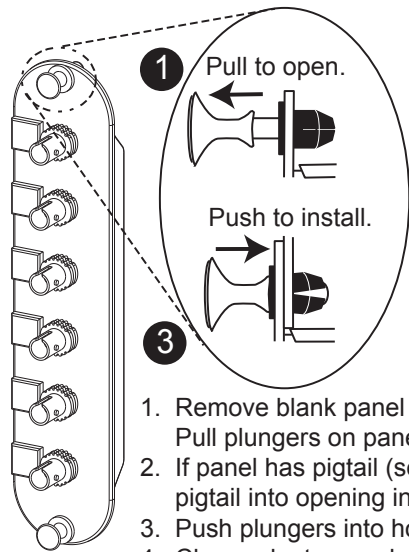
WARNING: Never look directly into the end of a fiber that may be carrying laser light.

Laser light can be invisible and can damage your eyes. Viewing it directly does not cause pain. The iris of the eye will not close involuntarily as when viewing a bright light. Consequently, serious damage to the retina of the eye is possible. Should accidental eye exposure to laser light be suspected, arrange for an eye examination immediately.



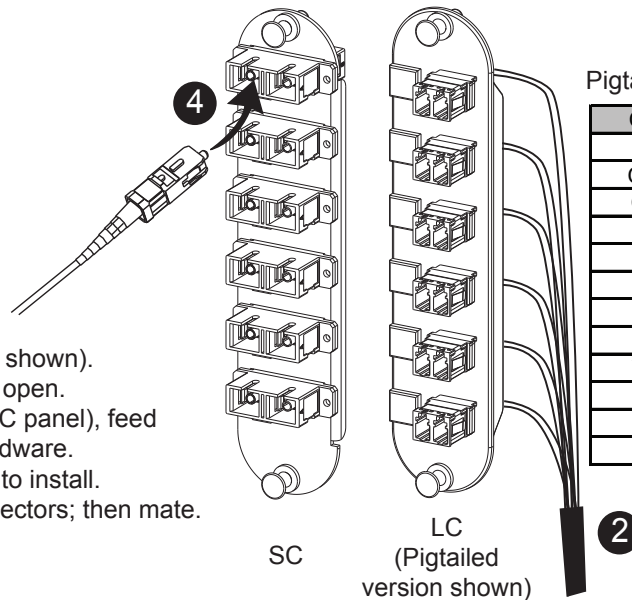
WARNING: DO NOT use magnifiers in the presence of laser radiation. Diffused laser light can cause eye damage if focused with optical instruments. Should accidental eye exposure to laser light be suspected, arrange for an eye examination immediately.

Installation



1. Remove blank panel (not shown). Pull plungers on panel to open.
2. If panel has pigtail (see LC panel), feed pigtail into opening in hardware.
3. Push plungers into holes to install.
4. Clean adapters and connectors; then mate.

ST[®] Compatible



Color Code for Pigtailed Connector Panels

COLOR	FIBER
Blue	1
Orange	2
Green	3
Brown	4
Slate	5
White	6
Red	7
Black	8
Yellow	9
Violet	10
Rose	11
Aqua	12

TPA-2893

Corning Cable Systems LLC • PO Box 489 • Hickory, NC 28603-0489 USA
1-800-743-2671 • FAX +1-828-325-5060 • International +1-828-901-5000 • <http://www.corning.com/cablesystems>

Corning Cable Systems reserves the right to improve, enhance, and modify the features and specifications of Corning Cable Systems' products without prior notification. LANscape is a registered trademark of Corning Cable Systems Brands, Inc. All trademarks are the properties of their respective owners. Corning Cable Systems is ISO 9001 certified.

© 2010 Corning Cable Systems. All rights reserved. Published in the USA.

STANDARD RECOMMENDED PROCEDURE 003-437 | ISSUE 6 | AUGUST 2010 | PAGE 1 OF 1