

9. Harsh Environment & Industrial System



Cable	98
Connectivity.....	99
Outlets & Faceplates	101
Patch Cords	104

Harsh Environment / Industrial System Cable

EtherSeal Cat. 5E STP 100 MHz Cable

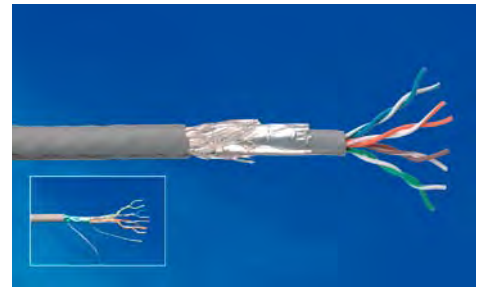
FEATURES

- Exceeds TIA/EIA-568-B Category 5E and ISO/IEC 11801:2002 Class D specifications
- Exceeds all requirements for Gigabit Ethernet
- Sunlight (UV) resistant for harsh environments
- Oil resistant, Level II
- Double jacketed - PVC
- CMR (Riser) rated
- AWG 24 conductor

Color: gray

ORDERING INFORMATION

Description	Part Number
F/UTP; Conductors: Solid; No. of Sheaths: 1; OD: 6.4 mm; Packaging: 305 m/Reel	0-1499449-3
SF/UTP; Conductors: Stranded; No. of Sheaths: 2; OD: 7.7 mm; Packaging: 305 m/Reel	0-1499450-3



EtherSeal Cat. 5E U/UTP 100 MHz Cable

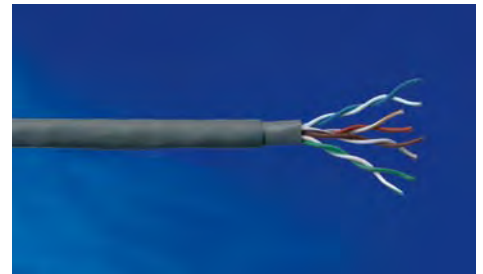
FEATURES

- Exceeds TIA/EIA-568-B Category 5E and ISO/IEC 11801:2002 Class D specifications
- Exceeds all requirements for Gigabit Ethernet
- Sunlight (UV) resistant for harsh environments
- Oil resistant, Level II
- Double jacketed - PVC
- CMR (Riser) rated
- AWG 24 conductor

Color: gray

ORDERING INFORMATION

Description	Part Number
Solid conductors; 6.4 mm; 305 m/Reel	0-1499447-3
Stranded conductors; 6.6 mm; 305 m/Reel	0-1499448-3



EtherSeal Jack and Coupler Kits shielded (STP)

FEATURES

- Category 6_A or 6 or 5E and IP67 compliant, shielded
- Front loading into enclosures and outlets
- Push-On and Twist Off Mating Action, confirmed by tactile feedback
- Blind mate with Polarized Keying
- Optional Outlet Cap with tether available

ORDERING INFORMATION

Description	Part Number
Cat. 5E SL Series 110Connect Modular Jack Kit	0-1479564-2
Cat. 5E SL Series In-Line Coupler Kit	0-1479600-2
Cat. 5E SL Series Toolless Modular Jack Kit	0-1479562-2
Cat. 6 SL Series 110Connect Modular Jack Kit	0-1479566-2
Cat. 6 _A AMP-TWIST Shielded Modular jack kit	0-1933589-2



EtherSeal Jack and Coupler Kits unshielded (UTP)

FEATURES

- Category 6 or 5E and IP67 compliant, unshielded
- Traditional 110 tool and toolless versions
- Front-loading into enclosures and outlets
- Push-On and Twist Off Mating Action
- Blind mate with Polarized Keying
- Tactile feedback confirms full mating
- Optional Outlet Cap with tether available

ORDERING INFORMATION

Description	Part Number
Cat. 5E SL Series 110Connect Modular Jack Kit	0-1479563-2
Cat. 5E SL Series In-Line Coupler Kit	0-1479599-2
Cat. 6 SL Series 110Connect Modular Jack Kit	0-1479565-2
Jack/Outlet Cap	0-1479591-2
Positive latching Modular Cap	0-1479861-1



EtherSeal Modular Plug Kits

FEATURES

- Meets or exceeds TIA and ISO component performance requirements
- IP67 Compliant
- Available for Shielded and Unshielded Systems
- Available for solid and stranded cable
- Push-On and Twist Off Mating Action
- Blind mate with Polarized Keying
- Tactile feedback confirms fully mated
- Optional Plug Cap with available tether
- Category 6 Modular Plug Kit can be used for either shielded or unshielded applications



ORDERING INFORMATION

Description	Part Number
Modular Plug Kit; Cat. 6; Unshielded; Solid	0-1479682-2
Modular Plug Kit; Cat. 6; Unshielded; Stranded	0-1479683-2
Modular Plug Kit; Cat. 5E; Unshielded; Solid	0-1479583-2
Modular Plug Kit; Cat. 5E; Unshielded; Stranded	0-1479584-2
Modular Plug Kit; Cat. 5E; Shielded; Solid	0-1479585-2
Modular Plug Kit; Cat. 5E; Shielded; Stranded	0-1479586-2

Sealed Circular LC ODVA Connectors

FEATURES

- IP67 rated to ensure protection from dust and water immersion
- LC connector qualified to Telcordia GR-326 and TIA/EIA 568B.3
- Temperature range of -40°C to +85°C
- Bayonet-style mechanical lock
- Flame retardant materials per UL 94

Applications

- Harsh environments where chemicals, corrosive gases and liquids are commonplace
- Inside and outside industrial plant and equipment that interface with industrial Ethernet networks
- Remote interface applications such as towers and antennae as well as FTTX in PON and at the home applications
- Mobile routers and internet hardware



ORDERING INFORMATION

Description	Part Number
Plug, Multimode	0-1828618-1
Plug, Singlemode	0-1828618-2
Receptacle, Multimode	0-1828619-1
Receptacle, Singlemode	0-1828619-2
Plug Cap	0-1828740-1
Receptacle Cap	0-1918177-1

Harsh Environment / Industrial System

Outlets & Faceplates

IP 44 - Industrial Dual Outlet Kit

FEATURES

- Lockable shielded Installation Kit IP 44 (1 pair of keys included)
- Spray water proof
- Dual outlet for industrial and semi industrial environments
- Robust and ball-safe wallmount housing (acc. DIN 18032)
- Each box equipped with a different lock
- Locking kits to reduce number of required keys are available
- Empty box does accept 2x SL 110Connect or AMP-TWIST 6 Jacks

Color: light gray (RAL 7035)

ORDERING INFORMATION

Description	Part Number
IP 44 box with AMP-TWIST 6S Floor die-cast outlet	0-1711357-1
IP 44 empty box	0-1711411-1
IP 44 empty box with gland	0-1711411-2
Set of 6 identical locks with keys	0-1711554-1



AMP CO Ultra Installation Kit IP44 Industrial Outlet

FEATURES

- Lockable shielded Installation Kit IP 44 (1 pair of keys included)
- Spray water proof
- Dual outlet for industrial and semi industrial environments
- Pre-loaded with shielded edge connector for AWG 22-24 twisted pair cables
- Robust and ball-safe wallmount housing (acc. DIN 18032)
- Fast termination and easy assembly
- 2 GHz performance
- Each box equipped with a different lock
- Locking kits to reduce number of required keys are available

Color: light gray (RAL 7035)

ORDERING INFORMATION

Description	Part Number
IP 44 box for AMP CO Ultra dual inserts	0-1711873-1
Set of 6 identical locks with keys	0-1711554-1



Harsh Environment / Industrial System

Outlets & Faceplates

IP44 - Industrial Wall Outlet

FEATURES

- Lockable unshielded Installation Kit IP 44 (1 pair of keys included)
- Spray water proof
- Dual outlet for industrial and semi industrial environments
- Un-loaded, does accept 2 SL 110 Connect or AMP-TWIST 6 jacks
- Robust and ball-safe wallmount housing (acc. DIN 18032)
- Each box equipped with a different lock
- Locking kits to reduce number of required keys are available

Color: light gray (RAL 7035)

ORDERING INFORMATION

Description	Part Number
IP 44 outlet unloaded	0-1711854-1
Set of 6 identical locks with keys	0-1711554-1



DIN rail adapter kit

FEATURES

- IP20 protection
- Mounting on DIN Rail TH35
- 1 TE (18 mm) width (DIN 43880)
- Built-in potential balance spring
- Protection class I
- Application instruction: 114-93017

Color gray (RAL 7035)

ORDERING INFORMATION

Description	Part Number
DIN Rail adapter covers (left and right)	0-1711658-2
DIN Rail Adapter housing for AMP-TWIST and SL Jack (not included)	0-1711897-1



Harsh Environment / Industrial System

Outlets & Faceplates

EtherSeal Stainless Steel Faceplates

FEATURES

- Available in single and double gang
- Accepts EtherSeal Jack or Coupler Kits (not included)
- Sealing gasket options available
- Kit includes 2 (for single gang) or 4 (for double gang) 6/32" screws

ORDERING INFORMATION

Description	Part Number
Single Gang 1 Port; with gasket	0-1479593-2
Single Gang 1 Port; without gasket	0-1479593-1
Single Gang 2 Port; with gasket	0-1479594-2
Single Gang 2 Port; without gasket	0-1479594-1
Double Gang 4 Port; with gasket	0-1479595-2
Double Gang 4 Port; without gasket	0-1479595-1
Double Gang 2 + 2 Port (2 x Etherseal, 2 x SL Jacks); with gasket	0-1479596-2
Double Gang 2 + 2 Port (2 x Etherseal, 2 x SL Jacks); without gasket	0-1479596-1



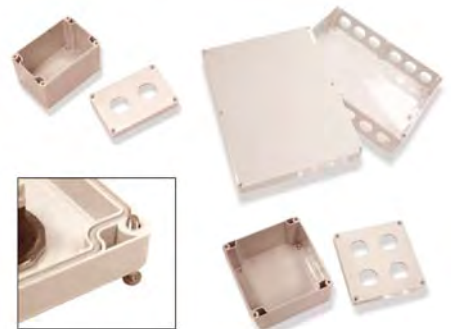
EtherSeal Enclosures

FEATURES

- NEMA 4 and 4X rated
- IP67 compliant when installed per instruction sheets
- For indoor and outdoor use
- Provides fully sealed remote access to data and telephone services
- Cable and conduit glands seal cable/conduit entries

ORDERING INFORMATION

Description	Part Number
Enclosure, 12 x EtherSeal; Cable Exits: 12 x M16; Conduit Exits: 2 x M50	0-1479654-1
Enclosure, 4 x EtherSeal; Cable Exits: 4 x M16; Conduit Exits: 1 x M50	0-1479655-1
Enclosure, 2 x EtherSeal; Cable Exits: 2 x M16; Conduit Exits: 1 x M40	0-1479656-1



EtherSeal Cable & Conduit Glands

FEATURES

- Cable and conduit glands provide a way to seal cable and or conduit entries into EtherSeal Connector Enclosures

ORDERING INFORMATION

Description	Part Number
Gland Kits M16; For use with: Cable	0-1479657-1
Gland Kits M40; For use with: 3/4" Conduit	0-1479658-1
Gland Kits M50; For use with: 1" Conduit	0-1479659-1



Harsh Environment / Industrial System

Patch Cords

EtherSeal Cat. 5E SF/UTP Patch Cord

FEATURES

- Cat. 5E and IP67 compliant
- SF/UTP shielded (foil and braid)
- Utilizes EtherSeal industrial grade Cat. 5E cable
- Factory-terminated and tested for quality
- Push-On and Twist-Off Mating Action
- Blind mate with Polarized Keying
- Tactile feedback confirms full mating
- Optional Plug Cap with available tether

Color: gray



ORDERING INFORMATION

Description	Part Number
EtherSeal to EtherSeal, Length: 0.9 m	Y-1479603-X
EtherSeal to Standard RJ-45, Length: 0.9 m	Y-1479604-X
Plug Cap with Tether	0-1479592-2

Y- -X	length
0- -3	0.9 m
0- -5	1.5 m
0- -7	2.1 m
1- -0	3.0 m
1- -5	4.5 m

Harsh Environment / Industrial System

Patch Cords

EtherSeal Cat. 5E UTP Patch Cord

FEATURES

- Cat. 5E and IP67 compliant, utilizing industrial grade cable
- Factory-terminated and tested for quality
- Push-On and Twist-Off Mating Action
- Blind mate with Polarized Keying
- Tactile feedback confirms full mating
- Optional Plug Cap with available tether

Color: gray

ORDERING INFORMATION

Description	Part Number
EtherSeal to EtherSeal	Y-1479601-X
EtherSeal to Standard RJ-45	Y-1479602-X
Plug Cap with Tether	0-1479592-2



Y- -X	length
0- -3	0.9 m
0- -5	1.5 m
0- -7	2.1 m
1- -0	3.0 m
1- -5	4.5 m

Harsh Environment / Industrial System Patch Cords

LC ODVA Patch Cords

FEATURES

- IP67 rated to ensure protection from dust and water immersion
- LC connector qualified to Telcordia GR-326 and TIA/EIA 568B.3
- Temperature range of -40°C to +85°C
- Bayonet-style mechanical lock
- Flame retardant materials per UL 94 V-0

Applications

- Harsh environments where chemicals, corrosive gases and liquids are commonplace
- Inside and outside industrial plant and equipment that interface with industrial Ethernet networks
- Remote interface applications such as towers and antennae as well as FTTX in PON and at the home applications
- Mobile routers and internet hardware



ORDERING INFORMATION

Description	Part Number
Sealed Circular LC ODVA to LC duplex cable assembly 50/125 µm	Y-1938976-X
Sealed Circular LC ODVA to LC ODVA cable assembly 50/125 µm	Y-1918819-X
Sealed Circular LC ODVA to LC ODVA cable assembly 62.5/125 µm	Y-1828935-X
Sealed Circular LC ODVA to LC ODVA cable assembly 9/125 µm	Y-1828936-X

Y- -X	length
0- -1	1 m
0- -2	2 m
0- -3	3 m
0- -4	4 m
0- -5	5 m