

THIS DRAWING HAS BEEN GENERATED AND IS MAINTAINED BY A CAD SYSTEM. CHANGES SHALL ONLY BE INCORPORATED AS DIRECTED BY THE DESIGN ACTIVITY.

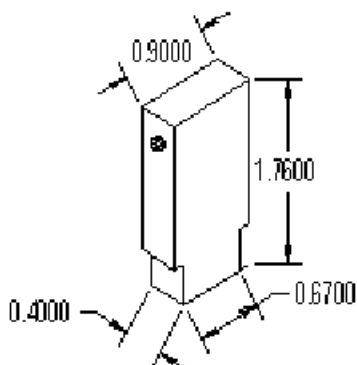
## REVISIONS

ZONE	LTR	DESCRIPTION	ECO NO.	DATE	APPROVED
	□	DRAWING RELEASE		05/25/00	

# PBM 6600 SERIES SPECIFICATIONS

## GENERAL DESCRIPTION:

The PBM series Surge Suppressor is a high speed, solid state device designed to protect equipment from over voltages on data lines. Continuous bi-polar, bi-directional, non interrupting protection is provided. The PBM automatically resets after each suppression function with no degradation of protection capabilities. The PBM is designed to help equipment meet various requirements including: Bellcore 1089, ITU K.20 & K.21, IEC 950, UL 1459 & 1950, and FCC 68.



## PERFORMANCE SPECIFICATIONS

PBM 6603.....67 Vpeak  
PBM 6604.....153 Vpeak  
PBM 6605.....270 Vpeak  
PBM 6607.....45 Vpeak

Peak Repetitive Pulse Current ..... 1.0 X 2.0  $\mu$ SEC - 225 Amp  
8 x 20  $\mu$ SEC - 150 Amp  
10 x 1000  $\mu$ SEC - 100 Amp

Temperature ..... -20°C to +50°C

Dimensions ..... 1.75" x .90" x .40"  
4.45cm x 2.29cm x 1.02cm

The PBM Series clip mounted protectors are designed to clip into a 66 Punchdown Block ( replacing the bridge clip ).

UNLESS OTHERWISE SPECIFIED, DIM. IN INCHES BEFORE PLATING.  
TOLERANCES ON: DECIMALS  
FRACTIONS=± .xx=±  
ANGLES= ° .XXX=±

MATERIAL:

DRAWN DRE	DATE 5/26/00
CHECKED CKW	5/26/00
ENGRG APPD JDW	5/26/00
PROJ APPD DLR	5/26/00
APPROVED	

**TRANSECTOR**  
SUPERIOR SURGE SUPPRESSION  
Hayden Lake, ID 83835

TITLE

PBM SERIES  
SPECIFICATIONS

NOTICE: THE INFORMATION AND DESIGN CONTAINED HEREIN IS THE PROPERTY OF TRANSECTOR SYSTEMS. WHO RESERVES ALL RIGHTS THERETO.

SIZE

A

CAGE

30992

DRAWING NUMBER

1400-344

REV

0

SCALE= NONE

SHEET 1 of 1