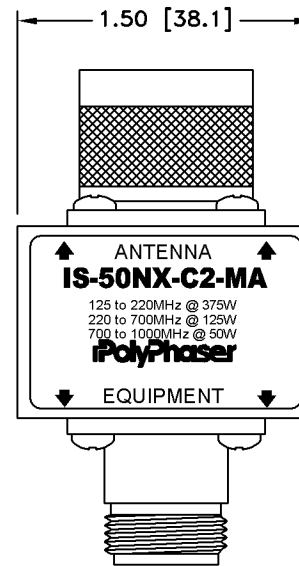
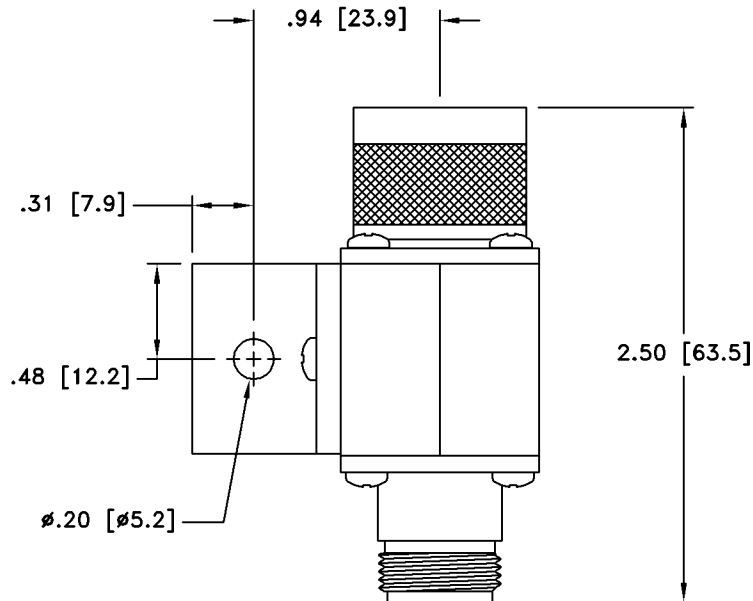
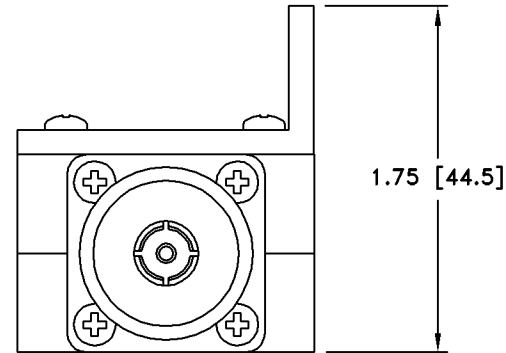


ALL DESIGN, OPERATIVE AND PROCESS DATA PERTAINING TO THE ARTICLE SHOWN ON THIS SHEET IS THE PROPERTY OF POLYPHASER CORPORATION. THE INFORMATION IS NOT TO BE COPIED, REPRODUCED, REVEALED TO OR APPROPRIATED BY OTHERS WITHOUT THE EXPRESS WRITTEN CONSENT OF POLYPHASER CORPORATION.

These commodities or technology are exported from the U.S. in accordance with the Export Administration Regulations. Diversion contrary to U.S. law prohibited.

REVISIONS

| REV LTR | DATE | ENG | MKTG | Q.A. |
|---------|-------------------------|-----|-------|------|
| B | 04/03/98 _{JCG} | KCB | — — — | BM |
| C | 07/21/99 _{SH} | M.M | R.J | J.B |
| D | 01/16/01 _{SH} | KCB | PH | RM |
| E | 12/18/02 _{SH} | LC | PH | LJ |
| F | 03/02/07 _{CM} | AD | — | — |




MAXIMUM CHARACTERISTICS

SURGE:
50kA IEC 61000-4-5 8/20 μ s WAVEFORM 500 JOULES
TURN ON:
600Vdc \pm 20%
TURN ON TIME:
2.5ns FOR 2kV/ns
FREQUENCY RANGE:
125MHz TO 1GHz
VSWR:
 \leq 1.1:1 OVER FREQUENCY RANGE
INSERTION LOSS:
 \leq 0.1dB OVER FREQUENCY RANGE
TEMPERATURE:
-45°C TO +85°C STORAGE/OPERATING +50°C

CUSTOMER APPROVAL: _____ DATE: _____

ALL DIMENSIONS SHOWN ABOVE ARE FOR REFERENCE ONLY.

| | | | | | |
|----------------------------|------------------|--|------------------|--------------|-----------------|
| DRAFTER R. DUNNING | DATE 05/24/94 |  P.O. BOX 9000 MINDEN, NV 89423 TEL: 775-782-2511 FAX: 775-782-4476 DWG NO/PART NO/DESCRIPTION IS-50NX-C2-MA CUSTOMER PRINT | | | |
| MECH ENGINEER — — — — | DATE — — — | | | | |
| ELEC ENGINEER J. JONES | DATE 05/24/94 | | | | |
| MARKETING — — — — | DATE — — — | | | | |
| QUALITY DEPT R. MATHEUS | DATE 05/24/94 | CAGE CODE 61114 | FILE NAME -C1 | SCALE 1/1 | SHEET 1 OF 1 |