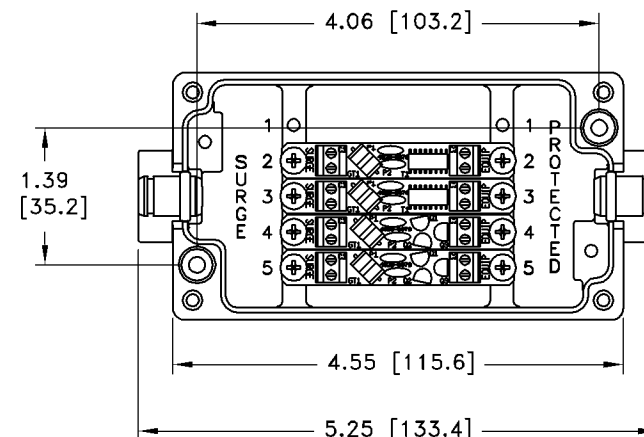
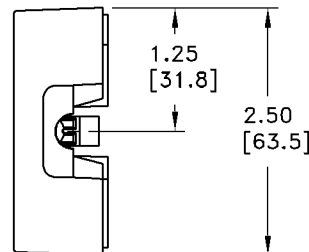


# REVISIONS

REV	LTR	DATE	ENG	MKTG	Q.A.
-----	-----	------	-----	------	------

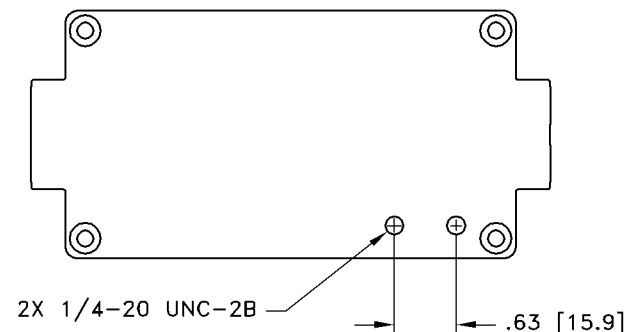
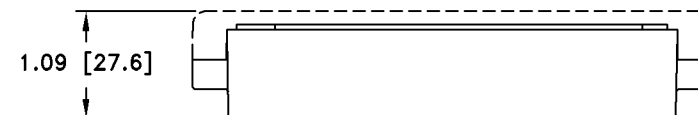
## MAXIMUM CHARACTERISTICS DATA (IX-H)

TURN-ON(@10mA):  
**+9Vdc ±10%**  
 UL 497B STRIKE VOLTAGE BREAKDOWN  
 (100 Vdc/SEC RISE):  
**+8.4 TO +9.6 Vdc**  
 RESISTANCE:  
 $1\Omega \pm 20\%$   
 DATA RATE:  
 UP TO 100Mbps  
 MAX HOLDING CURRENT:  
 400mA @ +20°C  
 620mA @ -40°C  
 290mA @ +50°C  
 235mA @ +65°C



## MAXIMUM CHARACTERISTICS DATA (IX-L)

TURN-ON(@10mA):  
**±12Vdc TYPICAL**  
 UL 497B STRIKE VOLTAGE BREAKDOWN  
 (100 Vdc/SEC RISE):  
**±10.0 TO ±12.4 Vdc**  
 RESISTANCE:  
 $1\Omega \pm 20\%$   
 DATA RATE:  
 UP TO 25Mbps  
 MAX HOLDING CURRENT:  
 400mA @ +20°C  
 620mA @ -40°C  
 290mA @ +50°C  
 235mA @ +65°C



## GENERAL CHARACTERISTICS

SURGE:  
 BELLCORE 1089 10/1000μs 100A  
 TEMPERATURE:  
 -40°C TO +65°C STORAGE/OPERATING  
 WIRE RANGE:  
 16 TO 28 AWG.  
 CORD DIAMETER:  
 0.114 TO 0.225 INCH W/ SMALL GROMMET  
 0.250 TO 0.350 INCH W/ LARGE GROMMET  
 APPLICATION:  
 PANEL MOUNT.  
 WEATHERIZED AFTER PROPER INSTALLATION OF  
 GROMMETS AND TORQUING OF LID.  
 ENVIRONMENTAL:  
 MEETS BELLCORE #TA-NWT-000487 PROCEDURE 4.11,  
 WIND DRIVEN RAIN (70MPH) RAIN INTRUSION TEST.

## NOTES:

- TORQUE 4X M4-20mm LID SCREWS TO 11lbf-in MINIMUM.
- ENSURE THAT ALL GROMMETS ARE PROPERLY SEATED FOR ENVIRONMENTAL SPECIFICATIONS.

CUSTOMER APPROVAL: \_\_\_\_\_ DATE: \_\_\_\_\_  
 ALL DIMENSIONS SHOWN ABOVE ARE FOR REFERENCE ONLY.

DRAFTER <b>S. HALL</b>	DATE <b>08/24/06</b>	 P.O. BOX 9000 MINDEN, NV 89423 TEL: 775-782-2511 FAX: 775-782-4476 DWG NO/PART NO/DESCRIPTION			
MECH ENGINEER <b>M. MATTON</b>	DATE <b>09/08/06</b>				
ELEC ENGINEER <b>L. CHANG</b>	DATE <b>09/29/06</b>	<b>IX-2H2L</b> <b>CUSTOMER PRINT</b>			
MARKETING <b>C. POCHCO</b>	DATE <b>09/21/06</b>				
QUALITY DEPT <b>L. JACQUES</b>	DATE <b>09/21/06</b>	CAGE CODE <b>61114</b>	FILE NAME <b>-C1</b>	SCALE <b>NOTED</b>	SHEET <b>1 OF 1</b>