

# OptiFiber® Pro OTDR

## Built for the enterprise

*As enterprise networks and datacenter architectures evolve, IT infrastructure administrators demand better OTDR technology to maintain fiber network performance. OTDRs designed for Telco networks are no longer acceptable as they are purpose-built for users with extensive optical background and training. Network engineers, Storage Area Network (SAN) designers and cable installers require an easy-to-use and efficient OTDR to minimize network down time.*

The OptiFiber Pro OTDR will:

- Accelerate fiber certification with trace times as short as two seconds in Quick Test mode
- Maximize efficiency with a smartphone user interface that allows anyone to perform expert fiber troubleshooting and certification
- Quickly test datacenter fiber with pre-programmed settings
- Troubleshoot datacenter fiber links with short patch cables and many connectors
- Easily characterize all connectors, splices and areas of high loss with graphical EventMap™ view
- Increase return on investment by enabling OTDR project sharing among users and different jobs
- Reduce network downtime by quickly and precisely identifying faults on all fiber types
- Facilitate results reporting and management with integrated LinkWare™ software to generate detailed and standards compliant reports

### Designed for enterprise fiber

Many OTDRs (Optical Time Domain Reflectometers) used for fiber troubleshooting are designed for carriers and contain cumbersome and complicated features that enterprise users don't need. Few OTDRs are built with features and usability for enterprise network engineers, SAN designers and cable installers.

As enterprises consume more storage resources and adopt higher bandwidth (40G, 100G) datacenter architectures, the resilience of the cabling infrastructure becomes highly dependent upon maintenance tools to ensure fiber reliability. OptiFiber Pro is the industry's first purpose-built OTDR that meets the unique challenges of an enterprise fiber infrastructure. With its simple smartphone user interface and powerful feature set, the OptiFiber Pro turns anyone into an efficient and expert premise fiber troubleshooter or installer.



## Benefits

- Increases the reliability and availability of datacenter and storage area networks
- Maximizes operator efficiency with task focused, simplified usability
- Enhances productivity with fast trace times, one-button set ups and integrated reporting
- Saves money by reducing expensive OTDR training and detailed trace analysis
- Eliminates the need to invest in a second OTDR to troubleshoot LAN and campus networks



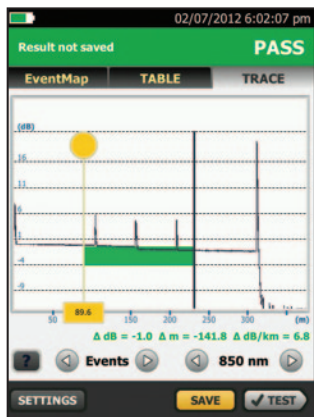
The industry's first enterprise fiber troubleshooting and certification tool

## Smartphone user interface

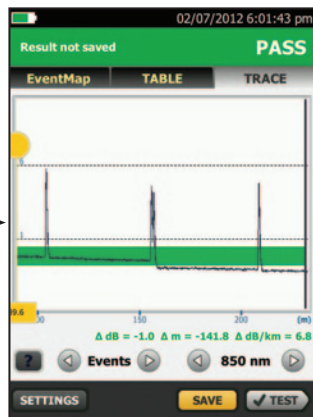
Most OTDRs are designed for a myriad of applications, causing the user interface to be difficult to navigate and interpret. OptiFiber Pro combines the latest “gesture-based” interface technology with a capacitive touchscreen to deliver the most innovative and user-friendly OTDR.

### Advantages:

- Single-touch tap and swipe control for selecting and scrolling menu items
- Multi-touch pinch to zoom for easy magnification control on a graphical fiber trace
- Task-focused design to reduce back and forth navigation through screens
- Capacitive touchscreen eliminates the need to recalibrate unlike legacy touchscreens
- Context sensitive on-screen help that gives users additional details or problem resolution suggestions



Trace test result



Trace test result - zoomed in

## Optimized for the datacenter

Driven by server virtualization and multi-gigabit links between servers, networks and storage, the datacenter architecture employs more patch cords and dense topology connectors, rendering carrier-class OTDRs with long dead-zones ineffective. OptiFiber Pro not only makes fiber deployment in datacenters possible, but provides the highest level of accuracy for quick problem resolution.

### Advantages:

- Ultra-short event and attenuation dead-zones precisely locates events and faults on fiber links
- Datacenter OTDR™ mode automatically sets the configuration to quickly test datacenter fiber
- The EventMap feature depicts fiber events in a way that requires no trace analysis expertise

## Unique certification with flexibility and efficiency

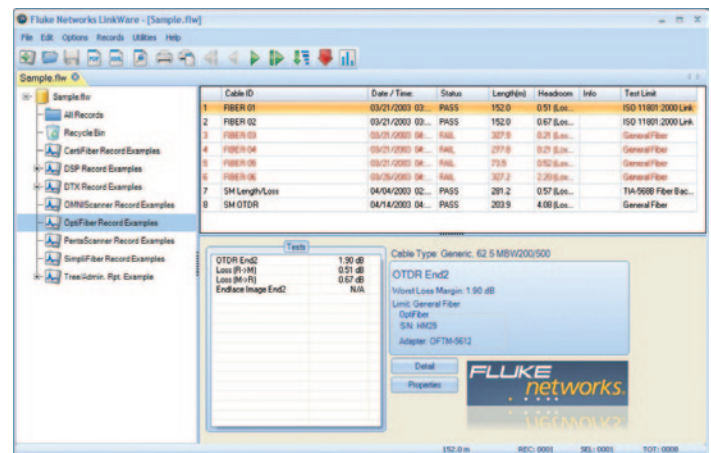
An important aspect in maximizing an OTDR's value is to properly plan its day-to-day usage. With built-in project management, OptiFiber Pro allows a project manager to define each user's role, settings and the associated tasks to be performed – transforming the OTDR into an all-in-one fiber testing tool complete with planning, inspection, certification and reporting.

### Advantages:

- Full OTDR capability that certifies fiber performance based on industry standards or customer specifications
- Powerful project management facilitates OTDR sharing with clear job assignment for each operator
- Easy monitoring of job progress with pass/fail results
- Built-in Visual Fault Locator (VFL) to facilitate troubleshooting
- On-screen report generation and upload to LinkWare™ application

## LinkWare™ management software

Leveraging the popular and multi-featured LinkWare cable test management software application, OptiFiber Pro users can easily access the hassle-free project management, report generation, and software upgrade capabilities to manage workflow and consolidate test results.



LinkWare management software

## Key features

### Extremely short event and attenuation dead zone

The OptiFiber Pro leverages the most sophisticated optical technology to provide the shortest event dead zone (0.5 m typical for MM) and attenuation dead zone (2.2 m typical for MM and 3.6 m typical for SM) of any OTDR. This technological advancement allows OptiFiber Pro to detect and measure closely spaced faults where no other OTDR can in today's connector-rich datacenter and storage area environments.

### Two second trace per wavelength

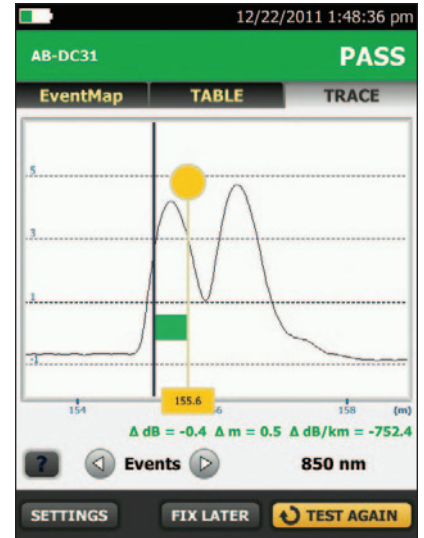
Another breakthrough with OptiFiber Pro is the data acquisition speed. While in Quick Test mode, a complete set of data is acquired in as little as two seconds per wavelength. OptiFiber Pro then analyzes the data and displays it as an EventMap event, Table or Trace. The end result is less time spent testing and more time performing other tasks.

### DataCenter OTDR™ mode

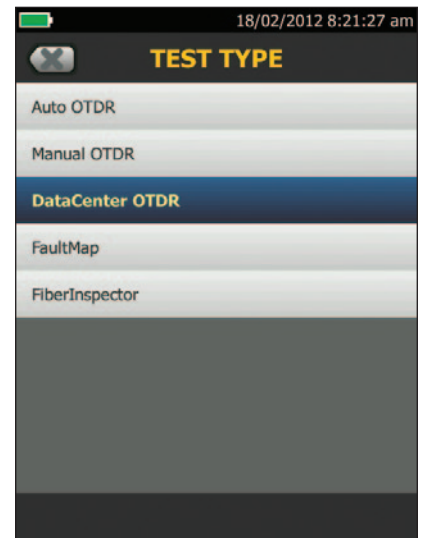
With a simple one-touch selection, users enter DataCenter OTDR mode – without setup time for fine tuning as needed in legacy OTDRs. DataCenter OTDR mode automatically detects OTDR parameters – end-detection algorithms, pulse widths, etc – without getting confused by the short links or number of connectors.

### Graphical EventMap™ view

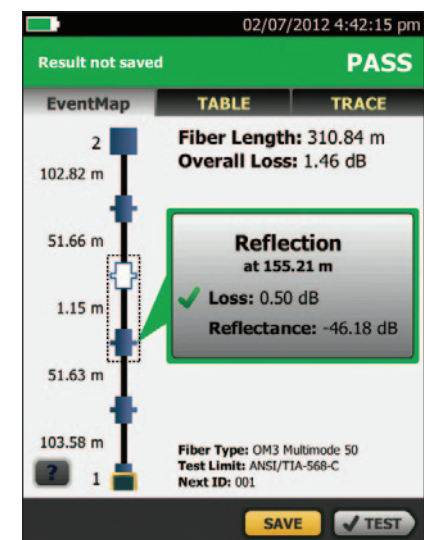
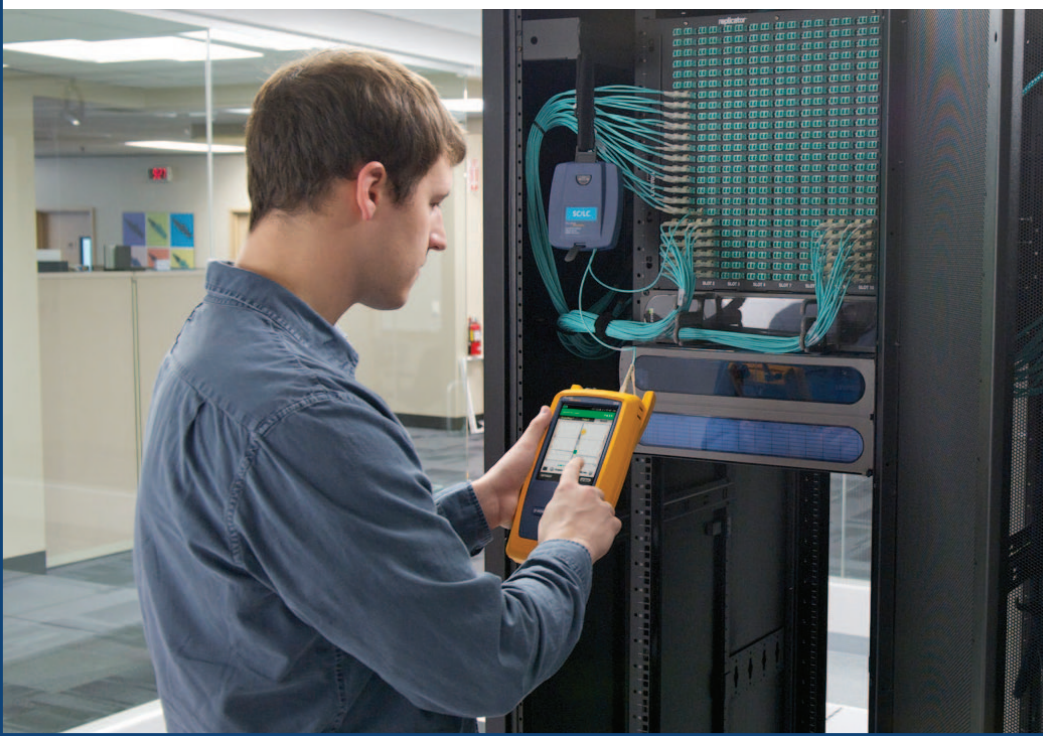
To eliminate the learning curve associated with reading an OTDR trace, OptiFiber Pro's advance logic automatically interprets the information to create a detailed and graphical map of events that includes connectors, splices and anomalies. To accommodate different preferences, users can easily switch between the EventMap, the Event Table and the Trace for test details. Any faulty events will be highlighted with RED icons to facilitate quick troubleshooting.



Extremely short event and attenuation dead zone



DataCenter OTDR mode



Graphical EventMap view



## Key features (continued)

### Dynamic project and user profile management

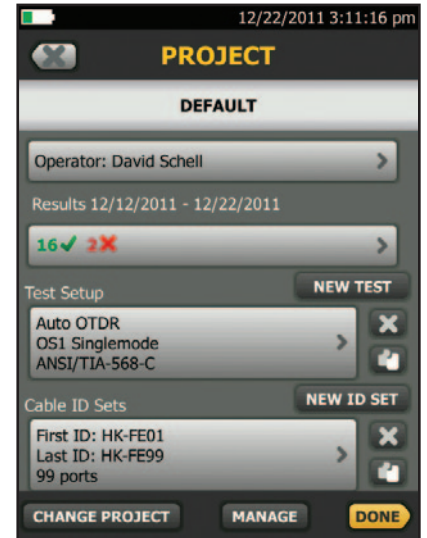
OptiFiber Pro enhances job efficiency by allowing the workflow planner to create and manage operator and job profiles per project – defined jobs or sets of cable IDs can be assigned to specific operators. The progress and status of each project can also be easily monitored.

### On-screen help – corrective action

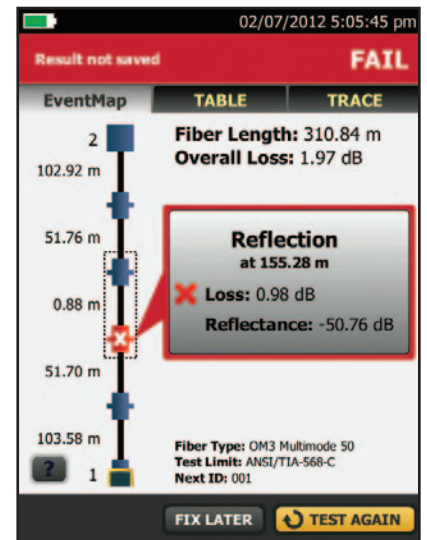
On-screen “help” suggests corrective action(s) for resolving fiber problems during each testing step. The “help” offered is context sensitive which allows users to quickly pinpoint possible resolutions. An easy-to-read, gray icon in the bottom, left-hand corner shows detailed corrective action recommendations.

### FiberInspector™ probe

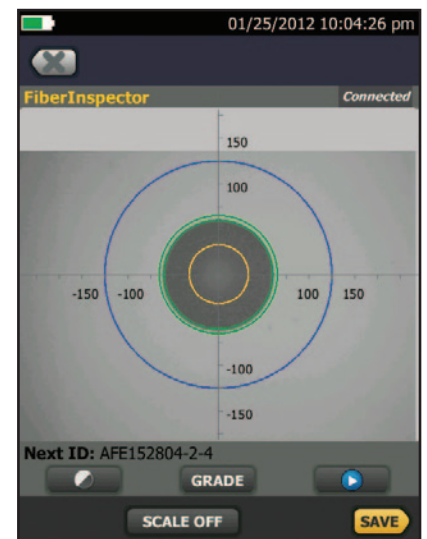
OptiFiber Pro’s video inspection system examines patch cords and patch panel bulkheads to avoid the number one cause of fiber link failure – contamination. Significant time is saved because the probe is inserted directly into the patch panel’s bulkhead to examine installed fiber terminations without disassembling the patch panel. Technicians assign a pass or fail grade to the fiber, append a comment and save it for use in certification reports.



Dynamic project and user profile management



EventMap view with on-screen help



FiberInspector probe



## Key OTDR specifications

	Multimode module	Singlemode module	Quad module
Wavelengths	850 nm +/- 10 nm 1300 nm +35/-15 nm	1310 nm +/- 25 nm 1550 nm +/- 30 nm	850 nm +/- 10 nm 1300 nm +35/-15 nm 1310 nm +/- 25 nm 1550 nm +/- 30 nm
Compatible fiber types	50/125 µm 62.5/125 µm	Singlemode	50/125 µm 62.5/125 µm Singlemode
Event dead zone <sup>1</sup>	850 nm: 0.5 m (typical) 1300 nm: 0.7 m (typical)	1310 nm: 0.6 m (typical) 1550 nm: 0.6 m (typical)	850 nm: 0.5 m (typical) 1300 nm: 0.7 m (typical) 1310 nm: 0.6 m (typical) 1550 nm: 0.6 m (typical)
Attenuation dead zone <sup>2</sup>	850 nm: 2.2 m (typical) 1300 nm: 4.5 m (typical)	1310 nm: 3.6 m (typical) 1550 nm: 3.7 m (typical)	850 nm: 2.2 m (typical) 1300 nm: 4.5 m (typical) 1310 nm: 3.6 m (typical) 1550 nm: 3.7 m (typical)
Dynamic range <sup>3, 5, 6</sup>	850 nm: 28 dB (typical) 1300 nm: 30 dB (typical)	1310 nm: 32 dB (typical) 1550 nm: 30 dB (typical)	850 nm: 28 dB (typical) 1300 nm: 30 dB (typical) 1310 nm: 32 dB (typical) 1550 nm: 30 dB (typical)
Max distance range setting	40 km	130 km	MM: 40 km SM: 130 km
Distance measurement range <sup>4, 5, 7, 8, 9, 10</sup>	850 nm: 9 km 1300 nm: 35 km	1310 nm: 80 km 1550 nm: 130 km	850 nm: 9 km 1300 nm: 35 km 1310 nm: 80 km 1550 nm: 130 km
Reflectance range <sup>4, 5</sup>	850 nm: -14 dB to -57 dB (typical) 1300 nm: -14 dB to -62 dB (typical)	1310 nm: -14 dB to -65 dB (typical) 1550 nm: -14 dB to -65 dB (typical)	850 nm: -14 dB to -57 dB (typical) 1300 nm: -14 dB to -62 dB (typical) 1310 nm: -14 dB to -65 dB (typical) 1550 nm: -14 dB to -65 dB (typical)
Sample resolution	3 cm to 400 cm	3 cm to 400 cm	3 cm to 400 cm
Pulse widths (nominal)	850 nm: 3, 5, 20, 40, 200 ns 1300 nm: 3, 5, 20, 40, 200, 1000 ns	3, 10, 30, 100, 300, 1000, 3000, 10000, 20000 ns	850 nm: 3, 5, 20, 40, 200 ns 1300 nm: 3, 5, 20, 40, 200, 1000 ns 1310/1550 nm: 3, 10, 30, 100, 300, 1000, 3000, 10000, 20000 ns
Test time (per wavelength)	Auto setting: 5 sec (typical)	Auto setting: 10 sec (typical)	Auto setting: MM - 5 sec (typical) SM - 10 sec (typical)
	Quick test setting: 2 sec (typical)	Quick test setting: 5 sec (typical)	Quick test setting: MM - 2 sec (typical) SM - 5 sec (typical)
	Best resolution setting: 2 to 180 sec	Best resolution setting: 5 to 180 sec	Best resolution setting: MM - 2 to 180 sec SM - 5 to 180 sec
	FaultMap setting: 2 sec (typical), 180 sec (max)	FaultMap setting: 10 sec (typical), 180 sec (max)	FaultMap setting: MM - 2 sec (typical) MM - 180 sec (max) SM - 10 sec (typical) SM - 180 sec (max)
	DataCenter OTDR setting: 1 sec (typical at 850 nm), 7 sec (max)	DataCenter OTDR setting: 20 sec (typical), 40 sec (max)	DataCenter OTDR setting: MM - 1 sec (typical at 850 nm) MM - 7 sec (max) SM - 20 sec (typical) SM - 40 sec (max)
	Manual setting: 3, 5, 10, 20, 40, 60, 90, 120, 180 sec	Manual setting: 3, 5, 10, 20, 40, 60, 90, 120, 180 sec	Manual setting: MM - 3, 5, 10, 20, 40, 60, 90, 120, 180 sec SM - 3, 5, 10, 20, 40, 60, 90, 120, 180 sec

1. Measured at 1.5 dB below non-saturating reflection peak with the shortest pulse width. Reflection peak < -40 dB for multimode and < -50 dB for singlemode.

2. Measured at +/- 0.5 dB deviation from backscatter with the shortest pulse width. Reflection peak < -40 dB for multimode and < -50 dB for singlemode.

3. For typical backscatter coefficient for OM1 fiber: 850: -65 dB, 1300: -72 dB.

4. Typical backscatter and attenuation coefficients for OM2-OM4 fiber: 850 nm: -68 dB; 2.3 dB/km; 1300 nm: -76 dB; 0.6 dB/km.

5. Typical backscatter and attenuation coefficients for OS1-OS2 fiber: 1310nm : -79 dB; 0.32 dB/km; 1550 nm: -82 dB; 0.19 dB/km.

6. SNR=1 method, 3 minute averaging, widest pulse width.

7. 850 = 9 km typical to find the end or 7 km typical to find a 0.1 dB event (with a maximum of 18 dB attenuation prior to the event).

8. 1300 = 35 km typical to find the end or 30 km typical to find a 0.1 dB event (with a maximum of 18 dB attenuation prior to the event).

9. 1310 = 80 km typical to find the end or 60km typical to find a 0.1 dB event (with a maximum of 20 dB attenuation prior to the event).

10. 1550 = 130 km typical to find the end or 90 km typical to find a 0.1 dB event (with a maximum of 18 dB attenuation prior to the event).

11. Does not include index of refraction error and does not include automatic event location error.

12. dB variation per 1 dB step.

13. Applies along the trace backscatter within the distance range in which the OTDR can find a 0.1 dB event.



## Additional key specifications

FiberInspector probe specification	
Magnification	~ 200X with OptiFiber Pro Display
Light source	Blue LED
Power source	TFS mainframe
Field of View (FOV)	Horizontal: 425 µm Vertical: 320 µm
Minimum detectable particle size	0.5 µm
Dimensions	Approximately 6.75 in x 1.5 in (175 mm x 35 mm) without adapter tip
Weight	200 g
Temperature range	Operating: 32°F to 122°F (0 °C to +50 °C) Storage: -4°F to +158°F (-20°C to +70°C)
Certifications	CE (when used with the mainframe)

VFL specifications	
On/Off control	Mechanical switch and a button on the touch screen
Output power	316 µW (-5 dBm) ≤ peak power ≤ 1.0 mW (0 dBm)
Operating wavelength	650 nm nominal
Spectral width (RMS)	±3 nm
Output modes	Continuous wave Pulsed mode (2 Hz to 3 Hz blink frequency)
Connector adapter	2.5 mm universal
Laser safety (classification)	Class II CDRH Complies to EN 60825-2

For complete kit configurations, please visit [www.flukenetworks.com/orderopro](http://www.flukenetworks.com/orderopro)

## Technical specifications

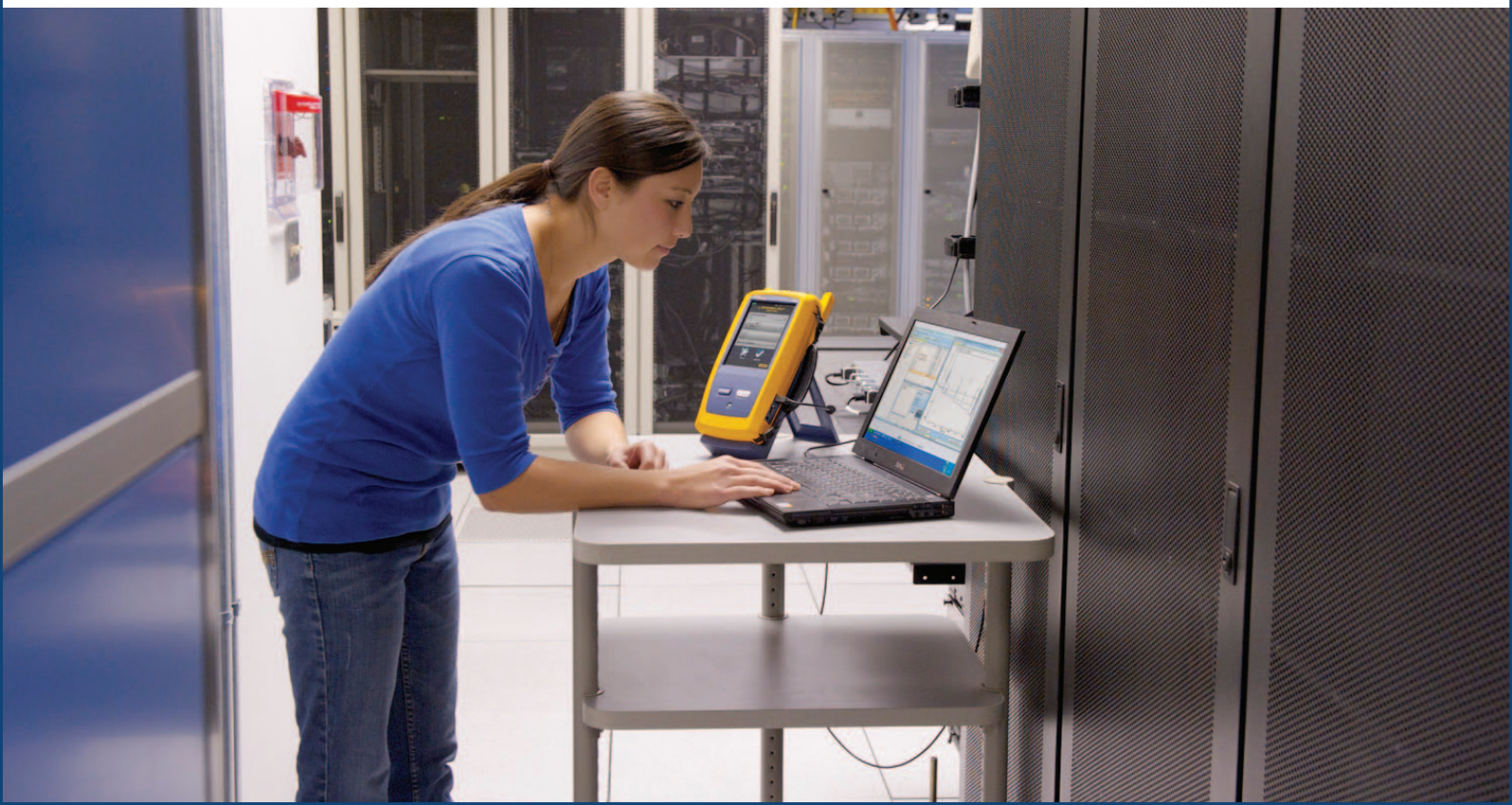
General specifications	
Weight	Mainframe with module and battery: 3 lbs, 5 oz (1.28 kg)
Dimensions	Mainframe with module and battery: 2.625 in x 5.25 in x 11.0 in ( 6.67 cm x 13.33 cm x 27.94 cm)
Battery	Lithium ion battery pack, 7.2 volts
Battery life	8 hr Auto OTDR operation, dual wavelength no video probe connected, 150 m of fiber

Charge Time	
Tester off	4 hours to charge from 10% to 90% capacity
Tester on	6 hours to charge from 10% to 90% capacity with the tester on

Environmental specifications	
Operating temperature*	-18°C to 45°C
Non-operating temperature	-30°C to 60°C
Operating altitude	4,000 m (13,123 ft) 3,200 m (10,500 ft) with AC adapter
Storage altitude	12,000 m
EMC	EN 61326-1

\* Using battery power. With AC power: 0°C to 45°C. Real Time Trace function used for no more than 5 minutes in a 15-minute period. Maximum ambient temperature is 35°C for continuous use of the Real Time Trace function.

\* Do not keep battery at temperatures below -20°C (-4°F) or above 50°C (122°F) for periods longer than one week to maintain battery capacity.



## OptiFiber Pro ordering information

Model	Description
<b>OFF-100-M</b>	OptiFiber Pro Multimode OTDR kit
<b>OFF-100-MI</b>	OptiFiber Pro Multimode OTDR with inspection kit
<b>OFF-100-S</b>	OptiFiber Pro Singlemode OTDR kit
<b>OFF-100-SI</b>	OptiFiber Pro Singlemode OTDR with inspection kit
<b>OFF-100-Q</b>	OptiFiber Pro Quad OTDR kit
<b>OFF-100-QI</b>	OptiFiber Pro Quad OTDR with inspection kit
<b>OFF-MM</b>	OptiFiber Pro Multimode OTDR module
<b>OFF-SM</b>	OptiFiber Pro Singlemode OTDR module
<b>OFF-QUAD</b>	OptiFiber Pro Quad OTDR module
<b>OFF-FI</b>	DI-1000 Inspector with selective bulkhead and video probe tip set FI1000-TIP-KIT
<b>TFS</b>	TFS mainframe with battery
<b>OFFQI-MFP</b>	Data Center Fiber (MM/SM) Troubleshooting Kit
<b>OFFMI-MFP</b>	Data Center Fiber (MM) Troubleshooting Kit
<b>OFFQI-CER</b>	Enterprise Fiber Cabling Certification Kit
<b>OFFQI-MFP-CER</b>	Enterprise Fiber Cabling Kit Certification and Troubleshooting Kit
Accessories	Description
<b>MMC-50-SCSC</b>	Multimode launch cable 50µm SC/SC
<b>MMC-50-SCLC</b>	Multimode launch cable 50µm SC/LC
<b>MMC-50-SCST</b>	Multimode launch cable 50µm SC/ST
<b>MMC-50-SCFC</b>	Multimode launch cable 50µm SC/FC
<b>MMC-50-SCE2K</b>	Multimode launch cable 50µm SC/E2K
<b>MMC-62-SCSC</b>	Multimode launch cable 62.5µm SC/SC
<b>MMC-62-SCLC</b>	Multimode launch cable 62.5µm SC/LC
<b>MMC-62-SCST</b>	Multimode launch cable 62.5µm SC/ST
<b>MMC-62-SCFC</b>	Multimode launch cable 62.5µm SC/FC
<b>SMC-9-SCSC</b>	Singlemode launch cable 9µm SC/SC
<b>SMC-9-SCLC</b>	Singlemode launch cable 9µm SC/LC
<b>SMC-9-SCST</b>	Singlemode launch cable 9µm SC/ST
<b>SMC-9-SCFC</b>	Singlemode launch cable 9µm SC/FC
<b>SMC-9-SCE2KAPC</b>	Singlemode launch cable 9µm SC/E2000 APC
<b>PA-SC</b>	OTDR source port interchangeable SC adapter
<b>PA-ST</b>	OTDR source port interchangeable ST adapter
<b>PA-FC</b>	OTDR source port interchangeable FC adapter
<b>TFS-BAT</b>	TFS battery
<b>TFS-CHGR</b>	TFS AC adapter/charger, international
<b>TFS-KIT-CASE</b>	OFF soft case
<b>TFS-HSTRAP</b>	TFS hand strap
<b>TFS-USB-CBL</b>	USB interface cable standard A to micro B

## FiberInspector probe models and accessories

Model	Description
<b>FI1000</b>	DI-1000 FiberInspector USB video probe for OptiFiber Pro
<b>FI1000-SCFC-TIP</b>	SC and FC bulkhead video probe tip
<b>FI1000-TIP-KIT</b>	LC, FC/SC Bulkhead, 1.25 and 2.5 mm universal tips in a box
<b>FI1000-LC-TIP</b>	LC bulkhead video probe tip
<b>FI1000-ST-TIP</b>	ST bulkhead video probe tip
<b>FI1000-MU-TIP</b>	MU bulkhead video probe tip
<b>FI1000-E2KAPC-TIP</b>	E2000/APC bulkhead video probe tip
<b>FI1000-SCAPC-TIP</b>	SC/APC bulkhead video probe tip
<b>FI1000-E2K-TIP</b>	E2000 bulkhead video probe tip
<b>FI1000-LCAPC-TIP</b>	LC/APC bulkhead video probe tip
<b>FI1000-2.5-UTIP</b>	2.5mm universal video probe tip for patch cords
<b>FI1000-1.25-UTIP</b>	1.25mm universal video probe tip for patch cords
<b>FI1000-2.5APC-UTIP</b>	2.5mm APC universal video probe tip for patch cords
<b>FI1000-MPO-UTIP</b>	MPO probe tip and translator knob for patch cords and bulkheads
<b>FI1000-MPOAPC-UTIP</b>	MPO/APC probe tip and translator knob for patch cords and bulkheads
<b>FI1000-1.25APC-TIP</b>	1.25mm APC universal video probe tip for patch cords

Model	Description
<b>GLD-OFF-100-Q</b>	1 year of Gold support coverage for OptiFiber Pro OTDR - Model: OFF-100-Q
<b>GLD3-OFF-100-Q</b>	3 year of Gold support coverage for OptiFiber Pro OTDR - Model: OFF-100-Q
<b>GLD-OFF-100-QI</b>	1 year of Gold support coverage for OptiFiber Pro Quad OTDR kit
<b>GLD3-OFF-100-QI</b>	3 year of Gold support coverage for OptiFiber Pro Quad OTDR kit - Model: OFF-100-QI
<b>GLD-OFF-100-MS</b>	1 year of Gold support coverage for OptiFiber Pro Multimode or Singlemode OTDR kit - Models: OFF-100-M OR OFF-100-S
<b>GLD3-OFF-100-MS</b>	3 year of Gold support coverage for OptiFiber Pro Multimode or Singlemode OTDR kit - Models: OFF-100-M OR OFF-100-S
<b>GLD-OFF-100-MI/SI</b>	1 year of Gold support coverage for OptiFiber Pro Multimode or Singlemode OTDR with inspection kit - Models: OFF-100-MI OR OFF-100-SI
<b>GLD3-OFF-100-MI/SI</b>	3 year of Gold support coverage for OptiFiber Pro Multimode or Singlemode OTDR with inspection kit - Models: OFF-100-MI OR OFF-100-SI
<b>GLD-OFFQI-MFP</b>	1 year of Gold support coverage for OptiFiber Pro OTDR and MultiFiber Pro
<b>GLD-OFFQI-CER</b>	1 year of Gold support coverage for OptiFiber Pro OTDR and DTX CertiFiber
<b>GLD-OFFQI-MFP-CER</b>	1 year of Gold support coverage for OptiFiber Pro OTDR, DTX CertiFiber and MultiFiber Pro

For a complete listing of OptiFiber Pro models and accessories, visit [www.flukenetworks.com/OPRO](http://www.flukenetworks.com/OPRO)

**Fluke Networks**  
P.O. Box 777, Everett, WA USA 98206-0777

**Fluke Networks** operates in more than 50 countries worldwide. To find your local office contact details, go to [www.flukenetworks.com/contact](http://www.flukenetworks.com/contact).

©2012 Fluke Corporation.  
Printed in U.S.A. 8/2012 4137124C

