

M12-Receptacle Connectors In Accordance With IEC 61076-2-101

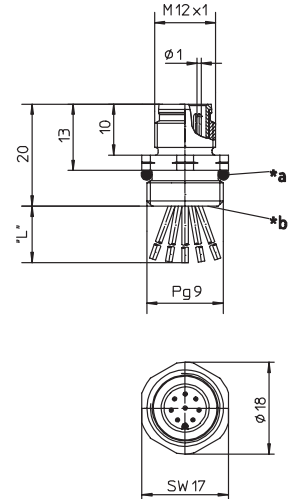
RSF 3...8 | RKF 3...8



Male, 3-, 4-, 5- and 8-Pole

Receptacle, 3-, 4-, 5-, and 8-pole, male, M12 for front mounting, 24 and 22 AWG, panel mount thread PG9.

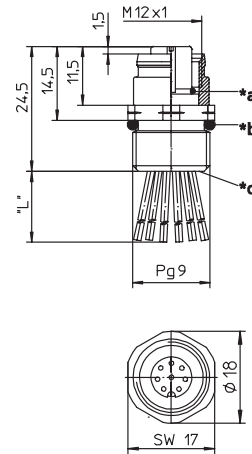
RSF 3...8



Female, 3-, 4-, 5- and 8-Pole

Receptacle, 3-, 4-, 5-, and 8-pole, female, M12 for front mounting, 24 and 22 AWG, panel mount thread PG9.

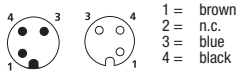
RKF 3...8



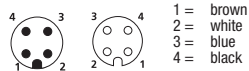
Pin Assignments

Face Views / M12, Male / Female

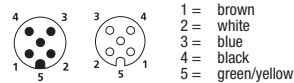
3 pole



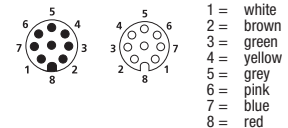
4 pole

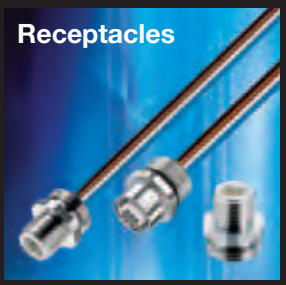


5 pole



8 pole





Be Certain with Belden

M12-Receptacle Connectors In Accordance With IEC 61076-2-101
 RSF 3...8 | RKF 3...8

Technical Data

Environmental

Degree of protection IP 67 / NEMA 6P
 Operating temperature range -25°C (-13°F) / +90°C (+194°F)

Mechanical









Housing Brass, nickel-plated
 Insert PUR, black (female)
 3-, 4- and 5-Pole: Nylon (male)
 8-Pole: PUR, black (male)
 Contact Brass, gold over nickel-plated

Electrical

Current rating 3-5 Pole: 4 A
 8 Pole: 1.5 A
 Voltage rating 3-5 Pole: 250 V
 8 Pole: 30 V / 36 V DC

Accessories

Panel nut (RSKF 9)

| Part Number | | Pins | Characteristics |
|-------------|--------------|------|---|
| RSF 3/0.5M | RKF 4-3/0.5M | 3 |   |
| RSF 4/0.5M | RKF 4/0.5M | 4 |   |
| RSF 5/0.5M | RKF 5/0.5M | 5 |   |
| RSF 8/0.5M | RKF 8/0.5M | 8 |   |