

**M12-Receptacle Connectors In Accordance With IEC 61076-2-101**

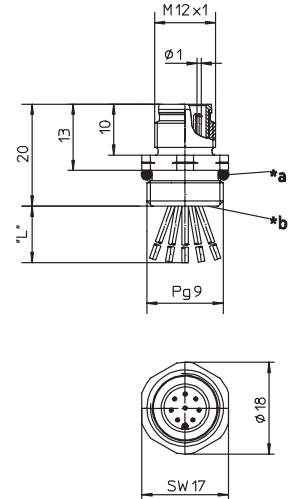
RSF 3...8 | RKF 3...8



**Male, 3-, 4-, 5- and 8-Pole**

Receptacle, 3-, 4-, 5-, and 8-pole, male, M12 for front mounting, 24 and 22 AWG, panel mount thread PG9.

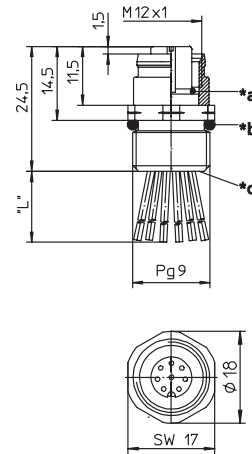
RSF 3...8



**Female, 3-, 4-, 5- and 8-Pole**

Receptacle, 3-, 4-, 5-, and 8-pole, female, M12 for front mounting, 24 and 22 AWG, panel mount thread PG9.

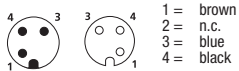
RKF 3...8



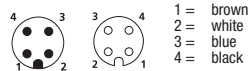
**Pin Assignments**

Face Views / M12, Male / Female

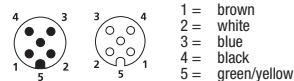
**3 pole**



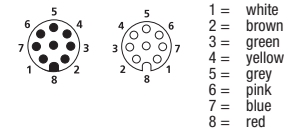
**4 pole**

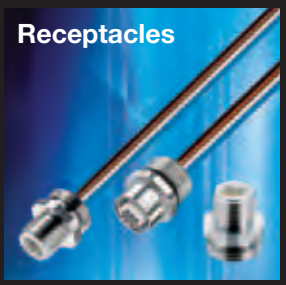


**5 pole**



**8 pole**





Be Certain with Belden

**M12-Receptacle Connectors In Accordance With IEC 61076-2-101**  
 RSF 3...8 | RKF 3...8

**Technical Data**

**Environmental**

Degree of protection IP 67 / NEMA 6P  
 Operating temperature range -25°C (-13°F) / +90°C (+194°F)

**Mechanical**







Housing Brass, nickel-plated  
 Insert PUR, black (female)  
 3-, 4- and 5-Pole: Nylon (male)  
 8-Pole: PUR, black (male)  
 Contact Brass, gold over nickel-plated

**Electrical**

Current rating 3-5 Pole: 4 A  
 8 Pole: 1.5 A  
 Voltage rating 3-5 Pole: 250 V  
 8 Pole: 30 V / 36 V DC

**Accessories**

Panel nut (RSKF 9)

Part Number		Pins	Characteristics
RSF 3/0.5M	RKF 4-3/0.5M	3	 
RSF 4/0.5M	RKF 4/0.5M	4	 
RSF 5/0.5M	RKF 5/0.5M	5	 
RSF 8/0.5M	RKF 8/0.5M	8	