



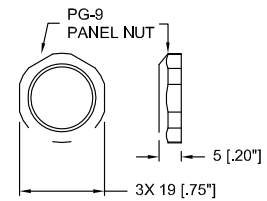
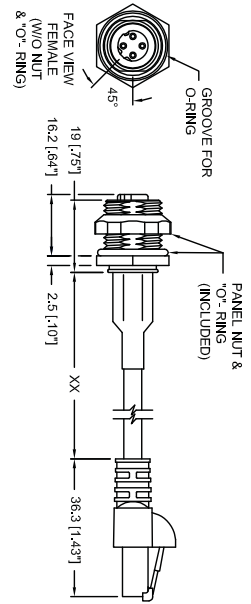
0985 706 104



Industrial Ethernet Double-Ended Cordsets for Ethernet/IP

M12 / RJ45 (High-Flex, Unshielded, TPE)

EtherNet/IP, high-flex, double-ended cord set, M12 female 4 pin, D-coded receptacle to male RJ45, 24 AWG, teal TPE jacket, stranded/unshielded with 2 twisted pairs.



Wiring Diagram

M12 / RJ45

M12	Color	RJ45
1	White/Orange	1
3	Orange	2
2	White/Green	3
4	Green	6

Pin Assignment

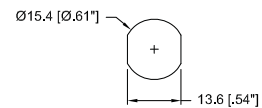
M12 Socket



RJ45 Socket



Recommended Panel Cut Out





Industrial Ethernet Double-Ended Cordsets for Ethernet/IP

0985 706 104

Technical Data

Environmental

Degree of protection M12: IP 68 / RJ45: IP 20
 Temperature rating -20°C(-4°F) to +75°C(+167°F)

Materials

Molded Body	M12 PUR, black
Shell	Brass, nickel plated
Contacts	Brass, gold over nickel plated
Insert	PUR, self extinguising
O-Ring	Viton™
RJ45	
Housing	Pre-tinned copper alloy
Insert	Clear polycarbonate
Contacts	50 μ" gold in contact area over nickel plating

Cable Specifications

Cable jacket	TPE
Color	Teal
Overall diameter	.210"
Conductor	24 AWG stranded tinned copper
Insulation	High density polyethylene
Continuous Flex	2 million cycles @ 10X, 10 million cycles @ 20X bend radius

Part Number	Cable Length Options
-------------	----------------------

0985 706 104

0.5 M / 1 M / 2 M / 5 M / 10 M / 15 M / 20 M / 25 M / 30 M / 35 M



The application of these products in harsh environments should always be checked before use.
 Specifications subject to alteration.

NOTE: Vibration & Oil Resistant applies to M12 side only.