



0911 ANC 101



AS-Interface Junction Branches

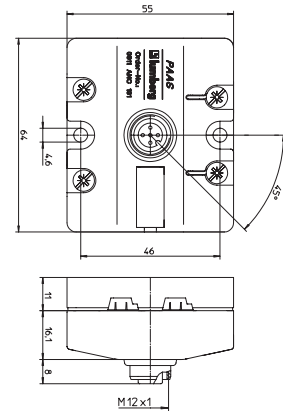
AS-Interface branch to connect AS-Interface slaves via a M12 connector with a flat cable system.

Technical Data

Environmental	
Degree of protection	IP 65
Housing material	PA
Nominal current at 40°C	4 A

Note

- insertion of the AS-Interface flat cable (yellow) in cable shaft "LINE1"
- insertion of the additional voltage supply (black flat cable) in cable shaft "LINE 2"



0911 ANC 401



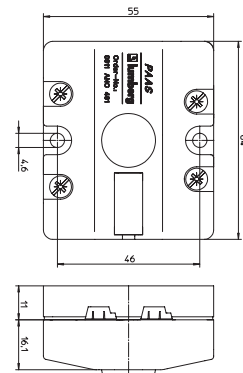
AS-Interface branch to connect two flat cables (opening of an AS-Interface branch or additional voltage supply).

Technical Data

Environmental	
Degree of protection	IP 65
Housing material	PA
Nominal current at 40°C	8 A

Note

Please be aware that only two wires with the same function may be inserted into this AS-Interface branch. This means that either only the yellow or only the black AS-Interface flat cable may be used.



Pin Assignments

Cable	M12 - 5 Poles
1 = AS-Interface + brown	
2 = 0 V AUX white	
3 = AS-Interface - blue	
4 = +24 V AUX black	
5 = earth green/yellow	



1 = AS-Interface +
2 = 0 V AUX
3 = AS-Interface -
4 = +24 V AUX
5 = earth

Part Number

0911 ANC 101

0911 ANC 401



The application of these products in harsh environments should always be checked before use.
Specifications subject to alteration.