



Identification

Part No.

Drawing

Dimensions in mm

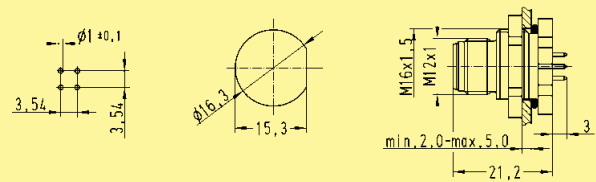
Han® M12

Male, D-coded,
straight, 4-poles



IP 67

21 03 371 1400



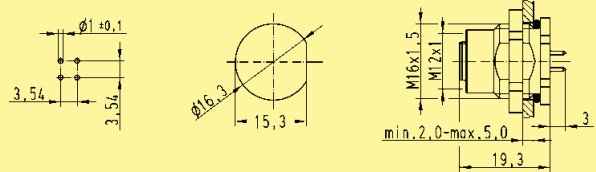
Han® M12

Female, D-coded,
straight, 4-poles



IP 67

21 03 371 2415



IP 20

21 03 381 6410

IP 67

21 03 381 6420

