

Terminal Blocks **entrelec**[®] Spring clamp technology

**Fast
Facts**

Front-side connections leave all the space above and below terminal blocks free. So, the distance between rails can be reduced, thus saving space, particularly important for machine electrical cabinets.

Spring clamp technology

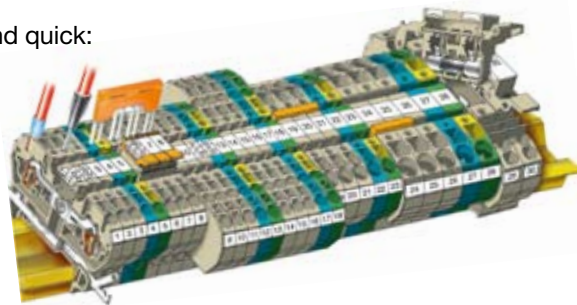
The hardened steel spring provides high clamping pressure that automatically adjusts to the wire gauge. The system's flexible design makes it particularly vibration and shock proof and dichromate zinc surface treatment gives it excellent corrosion-resistance qualities.

The spring clamp connection is simple and quick:

- No more screwing
- Top access to wiring and markers
- Free-hand connection (locking of screw-driver)

Spring clamp connections are secure:

- Vibration proof (complies with international railway requirements)
- Contact pressure and tightening independent from operator



Insulating material

- Insulating material is a polyamide and contains no asbestos, cadmium, phosphor or halogen elements.
- Manufactured to the highest standards (thermal resistance from -40 to +110°C) and with its self-extinguishing capacities it complies with European directives (incandescent wire resistance in compliance with IEC standard 06095.2.11).
- Available in a wide variety of colors.

Particularity

With a purely mechanical spring function, the best possible specific materials can be chosen for:

- High resistance to corrosion (90 hour resistance to saline mists as per IEC 68-2-4)
- Good contact pressure (for preventing voltage drops above IEC standard 60947-7-1)

ABB Spring clamp

By using spring clamp technology you have:

Secured connection:

- Good resistance to vibration
- Non-operator dependent
- No screwing operation

Easy connection:

- Front-side connection technology

Flexible connection

- Ergonomy: all blocks have the same profile
- Flexible jumpering system –screwless jumpers
- Complete range from 1.5 to 35 mm²
- UL94 VO material

Spring Clamp
terminal blocks

The Benefits

- Vibration proof
- Shock proof
- Excellent corrosion-resistance
- Locking pin

ABB

Locking pin

- Simple and rapid to use for locking up to ten blocks in position at a time ①
- Improved storage ②
- Does not prevent individual blocks from being removed ③
- Eliminates any risk of mistake during assembly



Multi-function channels

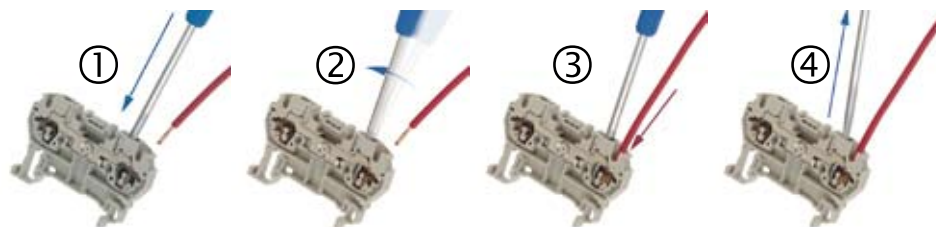
For peak flexibility and with the use of standard accessories only, Bridging can be extended and alternated between different connector blocks through the two shunt channels.

Labeling

Blocks can be identified using pre-printed or custom made markers.

Simplicity

Only a few gestures are required, a method that is both simple and rapid.



RECOMMENDED STOCKING PACKAGES SPRING CONNECTION

PART NUMBER	DESCRIPTION	DISTR MIN PURCHASE
029001125	D2,5/5.4L TERMINAL	50
029001226	D2,5/5.4L TERMINAL ORANGE	50
029001327	D2,5/5.N.4L TERMINAL BLUE	50
029001905	D2,5/5.P.4L GROUND TERMINAL	50
029002127	D2,5/5.2L TERMINAL	50
029002220	D2,5/5.2L TERMINAL ORANGE	50
029002321	D2,5/5.N.2L TERMINAL BLUE	50
029002907	D2,5/5.P.2L GROUND TERMINAL	50
029003121	D2,5/5.3L TERMINAL	50
029003222	D2,5/5.3L TERMINAL ORANGE	50
029003323	D2,5/5.N.3L TERMINAL BLUE	50
029003901	D2,5/5.P.3L GROUND TERMINAL	50
029104120	FED5.4L END SECTION	50
029105122	FED5.3L END SECTION	20
029106124	FED5.4L END SECTION	20
029110223	FED5.2 JUMPER	50
029110324	FED5.3 JUMPER	50

