


# Dominion® LX

 Small to Midsize Businesses

## Reliable Server Management for SMBs

### Available models

- ▶ DLX-108: 1 remote, 1 local user, up to 8 servers
- ▶ DLX-116: 1 remote, 1 local user, up to 16 servers
- ▶ DLX-216: 2 remote, 1 local user, up to 16 servers

### Features

- ▶ BIOS-level access and control
- ▶ Universal Virtual Media™\*
- ▶ Absolute Mouse Synchronization™\*
- ▶ Local and remote access
- ▶ Common browser-based user interface
- ▶ Security and encryption features
- ▶ RADIUS, LDAP and Active Directory® administration
- ▶ Multi-language support
- ▶ Modern architecture platforms with high definition (HD) 1920x1080 remote video resolution
- ▶ Flexible tiering for management of up to 256 computers from a single console
- ▶ Multiplatform support: Windows®, Macintosh®, Linux®, Sun®/Solaris™
- ▶ Flexible CIM options

\*D2CIM-VUSB or D2CIM-DVUSB required

Please visit [www.raritan.com/LX](http://www.raritan.com/LX) to learn more



## Affordable, high-quality, KVM-over-IP for the evolving small or midsize business

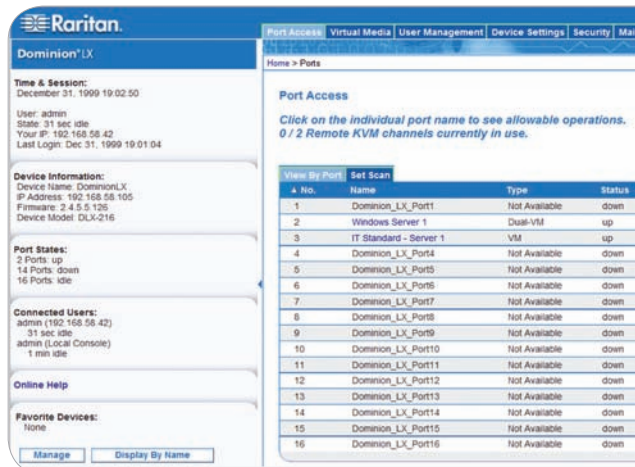
### Get more, pay less!

Raritan's Dominion LX KVM-over-IP switches give one or two remote users, with an independent local port, BIOS-level access and control of 8 or 16 servers. With flexible tiering (cascading) users can manage up to 256 computers from a single console.

These appliances, specifically designed for small to midsize businesses (SMBs), offer economical, remote access from anywhere; efficient, reliable server management; and an affordable feature set.

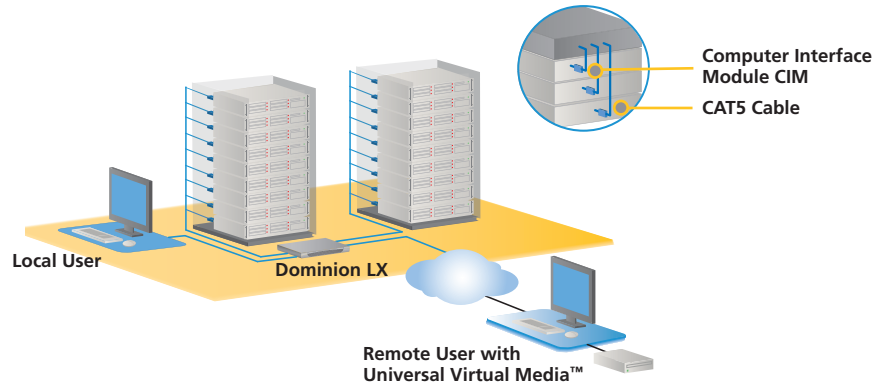
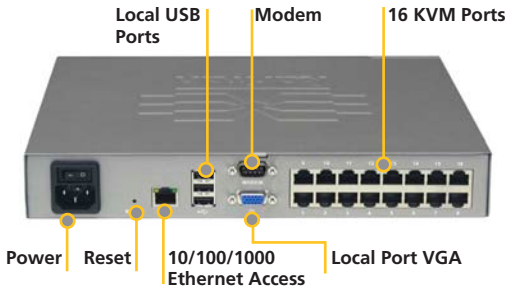
### Dominion LX benefits include:







- ▶ Efficient, reliable server management
- ▶ Economical, secure remote access from anywhere
- ▶ Economical footprint
- ▶ Efficient server diagnostics and restore capabilities
- ▶ Reduced travel time and training costs
- ▶ Cable package options for a minimum initial investment



# Specifications

## DLX-216 shown



Dominion LX Model	Description	Product Dimension (WxDxH), Shipping Weight and Power	Environment	Cable Packages
DLX-108	Economical 8-port KVM-over-IP switch, 1 remote, 1 local user, virtual media, single power and single LAN	11.45" x 10.63" x 1.73"; 291 mm x 270 mm x 44 mm;	Operating Temperature: 0° – 40° C (32° – 104° F)	DLX-108-MPAC: One DLX108 with 8 MCUTP20 6.5 foot cables
DLX-116	Economical 16-port KVM-over-IP switch, 1 remote, 1 local user, virtual media, single power and single LAN	8.82 lbs ; 4.0 kg	Humidity: 20% – 85% RH	DLX-116-MPAC: One DLX116 with 16 MCUTP20 6.5 foot cables
DLX-216	Economical 16-port KVM-over-IP switch, 2 remote, 1 local user, virtual media, single power and single LAN	Single power 100-240V AC, 50-60 Hz, 0.5A, 30 watts, 25.794 kcal/h		DLX-216-MPAC: One DLX216 with 16 MCUTP20 6.5 foot cables
Hardware Supported				D2CIM-VUSB or D2CIM-DVUSB required for Absolute Mouse Synchronization and Universal Virtual Media.
Form Factor	1U, rack mountable (brackets included)			
Local Access Ports	Video: HD15(F) VGA; Keyboard/Mouse: USB(F); 3 USB rear			
Sample Video Resolutions	PC text mode: 640x350, 640x480, 720x400 PC graphic mode: 640x480, 800x600, 1024x768, 1152x864, 1280x1024, 1440x900, 1680x1050,1600x1200, 1920x1080 Sun video mode: 1024x768, 1152x864, 1152x900, 1280x1024			 <b>D2CIM-VUSB</b>  <b>MCUTP-PS/2</b>
Remote Connection				 <b>D2CIM-PS2</b>  <b>MCUTP-USB</b>
Ports	8 (DLX-108) or 16 (DLX-116, DLX-216)			
Users	Local user; 1 or 2 remote users (model dependent)			
Network	Single 10/100/1000 gigabit Ethernet access, dual-stack: IPv4 and IPv6			
Protocols	TCP/IP; HTTP; HTTPS; UDP; RADIUS; SNMP; DHCP; PAP; CHAP			
Computer Interface Modules (CIMs) and Cat5 Cables				 <b>D2CIM-DVUSB</b>  <b>DCIM-USBG2</b>
Dominion CIMs	Available for USB, Dual USB, Universal Virtual Media/Absolute Mouse Synchronization, PS2, Sun, Serial Devices Dimensions (WxDxH) = 1.7" x 3.5" x 0.8"; 43 mm x 90 mm x 19 mm (dual USB) and 1.3" x 3.0" x 0.6"; 33 mm x 76 mm x 15 mm (other DCIMs)			
Cat5 MCUTP Cables	KVM UTP cable for PS/2, USB, Sun – lengths from 0.6m (2 ft.) – 6m (20 ft.). Specifications: RJ45 <-> HDB-15M, mini-din 6 x 2 (PS/2), USB type A (USB/Sun)			
Service and Support				
Warranty*	Two years standard with advanced replacement			

© 2011 Raritan Inc. All rights reserved. Raritan®, Know more. Manage smarter.™, Dominion®, Universal Virtual Media™ and Absolute Mouse Synchronization™ are registered trademarks or trademarks of Raritan Inc. or its wholly-owned subsidiaries. All others are registered trademarks or trademarks of their respective owners.

Based in Somerset, NJ, Raritan has 38 offices worldwide, serving 76 countries. For more information, please visit [www.raritan.com](http://www.raritan.com)

\*To qualify for advanced replacement under the standard warranty, you must register the product at <http://www.raritan.com/support/product-warranty-registration>  
 Specifications are subject to change without notice.