



Dominion KX II Series

Enterprise-class KVM-over-IP switch with integrated local and secure multiplatform remote access

KX2-864

- 64 KVM ports
- 1 local + 1 extended local port
- 8 remote users over the network

KX2-832

- 32 KVM ports
- 1 local + 1 extended local port
- 8 remote users over the network

KX2-808

- 8 KVM ports
- 1 local + 1 extended local port
- 8 remote users over the network

KX2-464

- 64 KVM ports
- 1 user at the rack
- 4 remote users over the network

KX2-432

- 32 KVM ports
- 1 user at the rack
- 4 remote users over the network

KX2-416

- 16 KVM ports
- 1 user at the rack
- 4 remote users over the network

KX2-232

- 32 KVM ports
- 1 user at the rack
- 2 remote users over the network

KX2-216

- 16 KVM ports
- 1 user at the rack
- 2 remote users over the network

KX2-132

- 32 KVM ports
- 1 user at the rack
- 1 remote user over the network

KX2-116

- 16 KVM ports
- 1 user at the rack
- 1 remote user over the network

KX2-108

- 8 KVM ports
- 1 user at the rack
- 1 remote user over the network

The Most Comprehensive KVM-over-IP Solution in the Industry

From Computer Rooms, Test Labs and Branch Offices to the Largest Enterprise Deployments, It's KVM over IP the Way It Should Be.

The Dominion KX II is an enterprise-class, secure, KVM-over-IP switch that provides 1, 2, 4 or 8 users with remote BIOS-level control of 8 to 64 servers. It raises the bar in KVM-over-IP technology with standard features such as virtual media, Absolute Mouse Synchronization™, smart card/CAC, blade server support, audio, mobile access and dual power. Deploy individually, or with Raritan's CommandCenter® Secure Gateway (CC-SG).

KX II offers you features that enhance productivity

Raritan's Universal Virtual Media™ lets administrators remotely perform tasks such as installing software, transferring files and backing up data – eliminating trips to the data center. Customers can control and manage servers via their Apple® iPhones® and iPads®, through Raritan's CommandCenter Secure Gateway.

The Dominion KX II also features Absolute Mouse Synchronization, which reduces installation time and sets a new standard for mouse synchronization, and transparent keyboard. These, combined with 1920x1080 video resolution (the industry's highest), Virtual KVM Desktop™, virtual media and audio features, provide you with the industry's most responsive remote user experience. Multilanguage support is available for Japanese and Chinese languages.

Our Virtual KVM Desktop allows users to scale a target server's display to any size, from thumbnails to full-screen video – supported across multiple LCD monitors. Plus, it provides an intuitive user experience – locally or remotely – through a common browser-based user interface.

KX II also boosts reliability and security

The Dominion KX II is the first KVM switch to use a certified FIPS 140-2 cryptographic module to meet U.S. and Canadian government security mandates. And with dual power supplies and dual gigabit Ethernet ports, the Dominion KX II is the most reliable and secure digital KVM switch in the industry.

Architecture

The Dominion KX II consists of the KVM-over-IP switch and computer interface modules (CIMs).

- ▶ Each CIM connects to server KVM ports and converts video signals for transmission of up to 150 feet over UTP (Cat5/5e/6) cabling
- ▶ KVM-over-IP remote access, local at-the-rack access, mobile access and modem access
- ▶ Remote users easily access Dominion KX II from Windows®, Linux®, Sun® or Mac® desktops
- ▶ Customers can tier multiple Dominion KX II switches
- ▶ With Raritan's CommandCenter Secure Gateway, scales to manage thousands of servers



"World's Best KVM"

Raises Productivity While Enhancing Security

Lowest Costs, Increases Productivity While Reducing Mean-Time-to-Repair

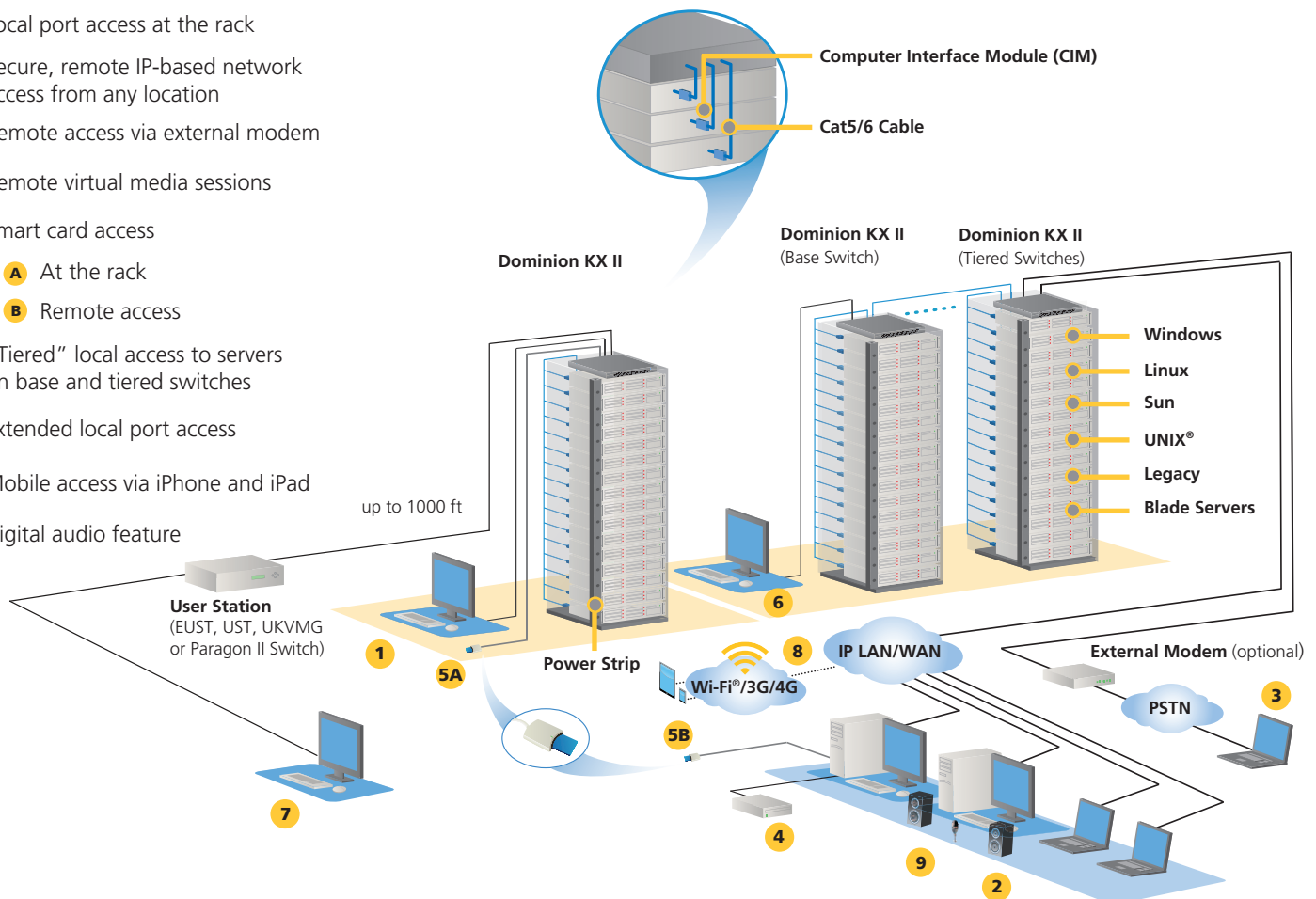
- ▶ Reduces expensive downtime via out-of-band BIOS-level access in emergencies from home, office or while traveling – now via iPhone or iPad
- ▶ With virtual media, users can perform more operations remotely
- ▶ Eliminates costly and inconvenient travel to the data center
- ▶ Common Web browser interface for remote and local access. Asian language support
- ▶ Optionally power on/off servers
- ▶ Operates with select Paragon® and Dominion KX I CIMs
- ▶ At-the-rack and remote IP access to blade servers
- ▶ KX2-864, KX2-832 and KX2-808 models have an extended local port to extend beyond the rack or to a KX II switch

Industry-Leading Security

- ▶ Uses FIPS 140-2–certified cryptographic module
- ▶ Smart card/CAC authentication – remote and local
- ▶ 256-bit AES or 128-bit RC4 encryption
- ▶ All data encrypted, including video transmissions and virtual media
- ▶ Secure Linux-based appliance
- ▶ Local or centralized authentication with LDAP, RADIUS or Active Directory® support
- ▶ Configurable user and group permissions for server access and control
- ▶ Local and remote access logged and authenticated
- ▶ Stealth mode with user-configurable TCP ports
- ▶ Supports strong password protection
- ▶ Customizable security banner for user login
- ▶ Dual-stack networking: IPv4 and IPv6
- ▶ Can upload customer's digital security certificate

In the diagram below, Dominion KX II provides:

- 1 Local port access at the rack
- 2 Secure, remote IP-based network access from any location
- 3 Remote access via external modem
- 4 Remote virtual media sessions
- 5 Smart card access
 - A At the rack
 - B Remote access
- 6 "Tiered" local access to servers on base and tiered switches
- 7 Extended local port access
- 8 Mobile access via iPhone and iPad
- 9 Digital audio feature



Easy to Install, Easy to Use

Easy to Install and Scale

- ▶ Easy installation – plug-and-play appliance
- ▶ Deploy individually, or with Raritan's CC-SG for centralized management of hundreds or even thousands of servers

Features

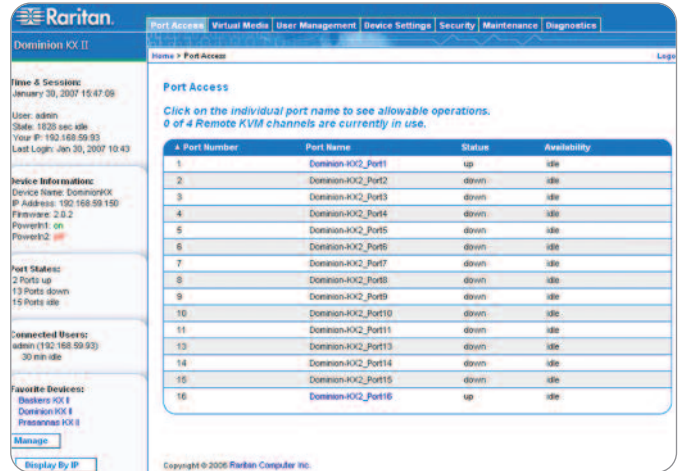
- ▶ 1, 2, 4 or 8 remote KVM-over-IP channels
- ▶ Highest port density in the industry – models available with 8, 16, 32 and 64 ports
- ▶ Dual power supplies with failover
- ▶ Dual gigabit Ethernet ports with failover
- ▶ Browser-based local user port for at-the-rack access
- ▶ SNMP management and syslog logging
- ▶ Platform independent – CIMs available for PS/2, USB, USB with virtual media, Sun and Sun USB
- ▶ External modem for emergency access
- ▶ Supports Dell®, HP®, Cisco® and IBM® blade servers

Universal Virtual Media

- ▶ Remotely install OS, load software, transfer files and back up data
- ▶ Enables data center servers to access remote media from your desktop during a KVM connection
- ▶ Includes DVD/CD-ROMs, USB mass storage devices, PC hard drives, floppy drives and ISO images
- ▶ Expanded BIOS use of virtual media via dual USB CIM and USB profile feature
- ▶ Remote smart card/CAC support via D2CIM-DVUSB

Highest Quality KVM over IP

- ▶ Award-winning KVM-over-IP technology
- ▶ High definition (HD) 1920x1080 remote video resolution
- ▶ Fastest, tightest mouse synchronization without changing server mouse settings
- ▶ Intuitive graphical user interface (GUI)
- ▶ High quality video with low bandwidth utilization
- ▶ High (15-bit) color palette support



Anytime, anywhere access and control

- ▶ Adaptive video settings for different bandwidth situations
- ▶ Play and record audio on remote servers
- ▶ Port scanning and thumbnail views

Virtual KVM Desktop

- ▶ Integrated, browser-based access and control
- ▶ Native Windows and Java™ clients support Windows, Linux, Sun and Mac users
- ▶ Multibrowser access for Internet Explorer® and Firefox®
- ▶ Full-screen video display and flexible video scaling
- ▶ Transparent keyboard handler
- ▶ Dual monitor KVM client support
- ▶ Supports 1920x1080 and 1600x1200 remote video resolutions, including widescreen formats

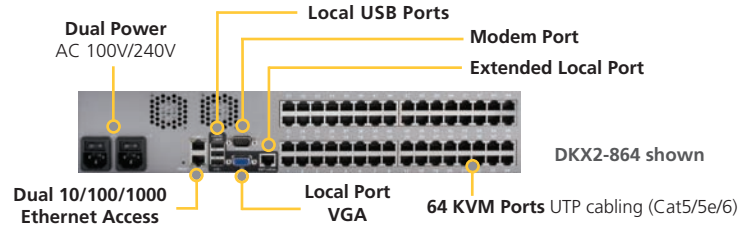
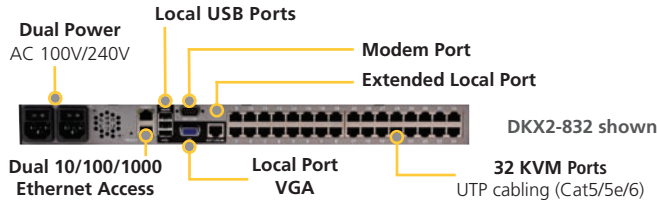
Mobile KVM-over-IP Access

- ▶ Control servers via iPhone and iPad
- ▶ Remote troubleshooting anytime/anywhere
- ▶ Easy access – no App to download
- ▶ Enabled by CC-SG 5.2

Call **1.800.724.8090** or visit www.raritan.com/KXII

Raritan is a proven innovator of power management, infrastructure management, KVM and serial solutions for data centers of all sizes. In thousands of corporations worldwide, our hardware and software solutions provide facilities and IT managers with the control they need to increase power management efficiency and improve data center productivity.

Specifications



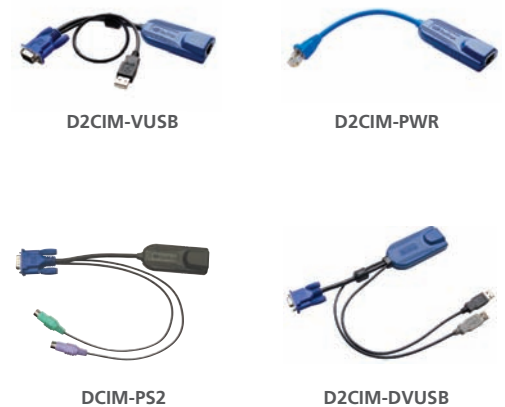
Dominion KX II Model	Description	Dimensions (WxDxH)	Weight	Power and Heat Dissipation
DKX2-864	64 server ports, 8 remote users, 1 local port + extended local port	17.3" x 13.8" x 3.5"; 439 x 360 x 88mm	12.88lbs; 5.8kg	Dual Power 100V/240V 47/63Hz 1.2A 67W 58 KCAL
DKX2-832	32 server ports, 8 remote users, 1 local port + extended local port	17.3" x 13.8" x 1.75"; 439 x 360 x 44mm	10.40lbs; 4.7kg	Dual Power 100V/240V 47/63Hz 1A 55W 47 KCAL
DKX2-808	8 server ports, 8 remote users, 1 local port + extended local port	17.3" x 13.8" x 1.75"; 439 x 360 x 44mm	10.40 lbs; 4.7kg	Dual Power 100V/240V 47/63Hz 1A 55W 47 KCAL
DKX2-464	64 server ports, 4 remote users, 1 local port for use at the rack	17.3" x 11.4" x 3.5"; 439 x 290 x 90mm	13.73lbs; 6.24kg	Dual Power 100V/240V 47/63Hz 1.5A 64W 55 KCAL
DKX2-432	32 server ports, 4 remote users, 1 local port for use at the rack	17.3" x 11.4" x 1.75"; 439 x 290 x 44mm	9.48lbs; 4.3kg	Dual Power 100V/240V 47/63Hz 1A 63W 54 KCAL
DKX2-416	16 server ports, 4 remote users, 1 local port for use at the rack	17.3" x 11.4" x 1.75"; 439 x 290 x 44mm	9.04lbs; 4.1kg	Dual Power 100V/240V 47/63Hz 1A 63W 54 KCAL
DKX2-232	32 server ports, 2 remote users, 1 local port for use at the rack	17.3" x 11.4" x 1.75"; 439 x 290 x 44mm	9.0lbs; 4.1kg	Dual Power 100V/240V 47/63Hz 0.6A 63W 54 KCAL
DKX2-216	16 server ports, 2 remote users, 1 local port for use at the rack	17.3" x 11.4" x 1.75"; 439 x 290 x 44mm	8.65lbs; 3.9kg	Dual Power 100V/240V 47/63Hz 0.6A 62W 53 KCAL
DKX2-132	32 server ports, 1 remote user, 1 local port for use at the rack	17.3" x 11.4" x 1.75"; 439 x 290 x 44mm	9.0lbs; 4.1kg	Dual Power 100V/240V 47/63Hz 0.6A 62W 53 KCAL
DKX2-116	16 server ports, 1 remote user, 1 local port for use at the rack	17.3" x 11.4" x 1.75"; 439 x 290 x 44mm	8.65lbs; 3.9kg	Dual Power 100V/240V 47/63Hz 0.6A 62W 53 KCAL
DKX2-108	8 server ports, 1 remote user, 1 local port for use at the rack	17.3" x 11.4" x 1.75"; 439 x 290 x 44mm	8.58lbs; 3.9kg	Dual Power 100V/240V 47/63Hz 0.6A 61W 53 KCAL

Computer Interface Modules (CIMs)

CIM Model	Description	Dimensions (WxDxH)	Weight
D2CIM-DVUSB	Dual USB CIM for BIOS virtual media, smart card/CAC, audio and Absolute Mouse Synchronization	1.7" x 3.5" x 0.8"; 43 x 90 x 19mm	0.25lb; 0.11kg
D2CIM-VUSB	USB CIM for virtual media and Absolute Mouse Synchronization	1.3" x 3.0" x 0.6"; 33 x 76 x 15mm	0.20lb; 0.09kg
DCIM-PS2	CIM for PS/2	1.3" x 3.0" x 0.6"; 33 x 76 x 15mm	0.20lb; 0.09kg
DCIM-SUN	CIM for Sun	1.3" x 3.0" x 0.6"; 33 x 76 x 15mm	0.20lb; 0.09kg
DCIM-USBG2	CIM for USB and Sun USB	1.3" x 3.0" x 0.6"; 33 x 76 x 15mm	0.20lb; 0.09kg
D2CIM-PWR	CIM for remote power management	1.3" x 3.0" x 0.6"; 33 x 76 x 15mm	0.20lb; 0.09kg
P2CIM-SER	Paragon II/Dominion KX II CIM for serial (ASCII) devices	1.3" x 3.0" x 0.6"; 33 x 76 x 15mm	0.20lb; 0.09kg

Specifications for All Dominion KX II Models

Form Factor	1U and 2U full width, rack mountable (brackets included)
Operating Temperature	0° - 40° C (32° - 104° F)
Humidity	20% - 85% RH
Remote Connection	Network: Dual 10/100/1000 gigabit Ethernet access; dual-stack: IPv4 and IPv6 Modem Port: DB9(F) DTE Protocols: TCP/IP, HTTP, HTTPS, UDP, RADIUS, SNTP, DHCP, PAP, CHAP
Local Access Port	Video: HD15(F) VGA Keyboard/Mouse: USB(F), 1 USB front, 3 USB rear
Sample Video Resolutions	PC text mode: 640x350, 640x480, 720x400 PC graphic mode: 640x480, 800x600, 1024x768, 1152x864, 1280x1024, 1440x900, 1680x1050, 1600x1200, 1920x1080 Sun video mode: 1024x768, 1152x864, 1152x900, 1280x1024
Warranty	Two years standard with advanced replacement*



© 2012 Raritan Inc. All rights reserved. Raritan®, Know more. Manage smarter.™, Dominion®, CommandCenter®, Paragon®, Virtual KVM Desktop™, Universal Virtual Media™ and Absolute Mouse Synchronization™ are registered trademarks or trademarks of Raritan Inc. or its wholly-owned subsidiaries. All others are registered trademarks or trademarks of their respective owners.

*To qualify for advanced replacement under the standard warranty, you must register the product at <http://www.raritan.com/support/product-warranty-registration>

Specifications are subject to change without notice.