

Modular 1 RU Multifunction System

Copper :: T1/E1 DSX, T3/E3 DSX, Ethernet RJ, Optical Patch and Splice

Overview

As customer demand continues to push advanced capabilities to the edge of wireless and wireline networks, service providers face the challenge of deploying efficient connectivity outward from the central office. Telect's 1 RU multifunction panel addresses this through a modular design that enables flexible, dynamic connectivity, building efficiency into network applications.

Designed to function in edge locations such as cell towers and remote sites, this modular provides a flexible platform for T1, T3, Ethernet and fiber optic circuit management, all in just 1.75" of vertical rack space.

Because these environments typically offer limited space for hardware, effective circuit access and monitoring can be a challenge. With the 1 RU panel, you gain high density, with circuit counts up to:

- 24 DSX-1
- Six DSX-3
- 48 RJ45 Ethernet
- 72 Fiber optic (LC only)

Combination connectivity is also possible, as are T1 interconnect and analog capabilities. Choose from a comprehensive line of modules to build the ideal space-saving connectivity platform for your application.

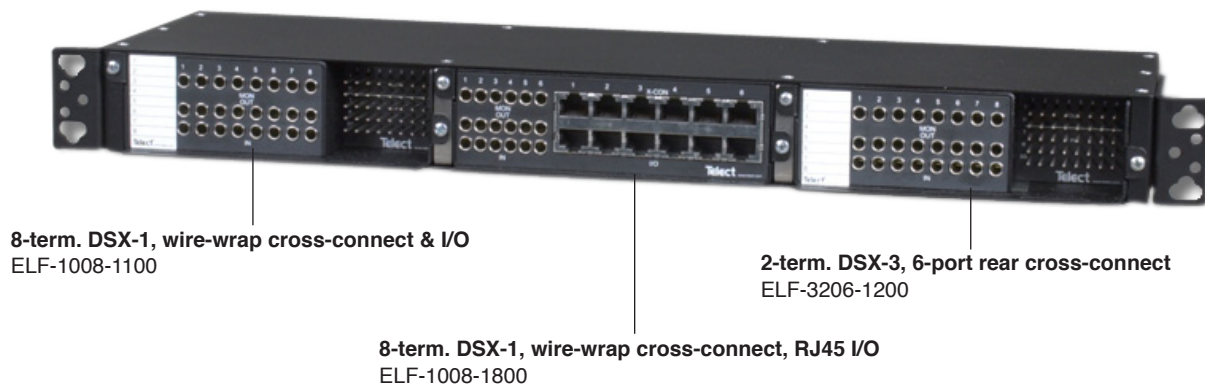
Primary Benefits

- Modular design helps you manage overall costs
- Total front access configurations enable simple circuit access
- Designed to ITU G.703 standards
- Chassis and modules include built-in wire management
- Module options include front cross-connect or total front access DSX-1, DSX-3, T1 interconnect, Ethernet RJ45, optical patch, splice or splitter
- Chassis options include high-density 3-module rack-mount or 1-module wall-mount

Applications

- Wireless base stations
- Demarcation points
- Remote huts
- Ethernet

3 Module 1RU Chassis
ELF-0000-2400



Modular 1 RU Multifunction System

Copper :: T1/E1 DSX, T3/E3 DSX, Ethernet RJ, Optical Patch and Splice

Build a Panel

Step one: Start with a chassis or bracket – choose rack-mount or wall-mount based on capacity requirements and application considerations.

Step two: Choose modules – select based on signals being managed, connector types preferred, capacity requirements, and chassis type (standard or total front access).

Step three: Finish with accessories – choose Telect for patch cords and cabling as needed for your panel solution.

Chassis and Brackets

Choose the ideal high-density housing for traditional rack-mount or limited-space wall-mount applications.

Standard 1 RU/3-Module Rack-Mount Chassis

1 RU footprint, three module capacity

Reversible brackets for 19" or 23" mounting

Termination capacities: Up to 24 DSX-1, 6 DSX-3, 48 optical patch

Fully enclosed for robust RF protection at cell tower bases and other environments

Blank faceplate also available (ELF-0000-0001)



ELF-0000-2400

Total Front Access Wall-Mount Chassis

One module capacity

Designed for use with total front access DSX-1 and DSX-3 modules



ELF-0000-0600

Optical Wall-Mount Enclosure

One module capacity

Optimized for use with optical modules

Includes lockable access door

Ideal for co-locations



ELF-0000-0800

1 RU Wall-Mount Bracket

Holds 1 RU chassis against a wall or cabinet

Enables chassis to extend with minimum profile

Provides additional mounting versatility for 1 RU chassis



ELF-0000-0900

Modular 1 RU Multifunction System

Copper :: T1/E1 DSX, T3/E3 DSX, Ethernet RJ, Optical Patch and Splice

T1/E1 Modules

Choose from a broad range of options and gain basic T1 connectivity optimized to your specifications. All T1/E1 modules feature Telect's Dedicated Digital Jacks for industry-standard Bantam monitoring and a lifetime of reliable connections.

ELF-1008-1200

8-Termination Wire-Wrap/BNC Module

Wire-wrap cross-connect and BNC I/O fields

Front cross-connect design with BNC connectors on rear



ELF-1008-1800

8-Termination Wire-Wrap/RJ45 Module

Wire-wrap cross-connect and RJ45 I/O fields

Front cross-connect design with PCB-mounted RJ45 connectors on rear



ELF-1008-1100

8-Termination Wire-Wrap Module

Wire-wrap cross-connect and I/O fields

Traditional connectivity in a front-cross-connect design



ELF-3006-1100

6-Termination Total Front Access Wire-Wrap Module

All connections on the front of the module for simple access

Wire-wrap cross-connect and I/O fields

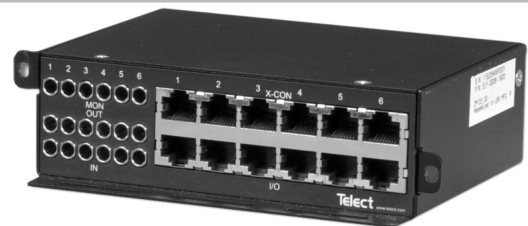


ELF-3006-1800

6-Termination Total Front Access RJ48 Module

All connections on the front of the module for simple access

RJ48 cross-connect and I/O fields provide simple, versatile connectivity



ELF-0005-0001

48-Pin VF Alarm Block Module

Designed for voice frequency termination or alarm use



Modular 1 RU Multifunction System

Copper :: T1/E1 DSX, T3/E3 DSX, Ethernet RJ, Optical Patch and Splice

Recommended Accessories for T1/E1 Modules

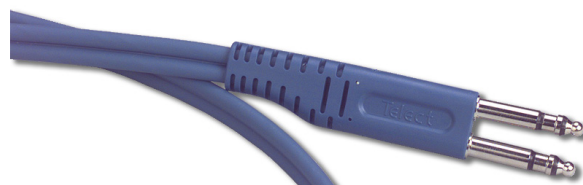
Single Bantam Patch Cords

3 ft.	040-1000-003
5 ft.	040-1000-005
10 ft.	040-1000-010



Dual Bantam Patch Cords

3 ft.	040-2000-003
5 ft.	040-2000-005
10 ft.	040-2000-010



Single 735A BNC Cables

3 ft.	043-0911-003
6 ft.	043-0911-006
10 ft.	043-0911-010



Dual 735A BNC Cables

3 ft.	043-0911-003
6 ft.	043-1911-006
10 ft.	043-1911-010



Cat 5e Ethernet (RJ) Patch Cords

3 ft.	EPCE-CT5E-BL03
5 ft.	EPCE-CT5E-BL05
7 ft.	EPCE-CT5E-BL07



T1 Cross-Connect Wire 06115RC

DS1 Jack Specifications

Return loss	≤26dB at 722 kHz
Insertion loss	<-0.5dB at 1.544 Mbps
Monitor level	-20dB +/- -1.5dB at 1.544 Mbps
Contact resistance	<0.01 Ohms
Characteristic impedance	100/120 Ohms
Adjacent channel crosstalk	≤-60dB at 1.544 Mbps
Interchannel crosstalk	≤-60dB at 1.544 Mbps

Modular 1 RU Multifunction System

Copper :: T1/E1 DSX, T3/E3 DSX, Ethernet RJ, Optical Patch and Splice

T3/E3 Modules

Telect's patented 6-port DSX-3 design provides access to both sides of the T3 signal to greatly simplify maintenance. Rear cross-connect and total front access options are available.

ELF-3206-1200

2-Termination Rear Cross-Connect DSX-3 Module

BNC I/O field

Mini-WECO module jacks



ELF-3206-1900

1-Termination Total Front Access DSX-3 Module

All connections on the front of the module for simple access

BNC I/O field and mini-WECO T3 jacks



Recommended Accessories for T3/E3 Modules

Single 735A BNC Cables

3 ft.	043-0911-003
6 ft.	043-0911-006
10 ft.	043-0911-010

Dual 735A BNC Cables

3 ft.	043-0911-003
6 ft.	043-1911-006
10 ft.	043-1911-010

Mini-WECO 735A Patch Cords

3 ft.	043-0922-003
6 ft.	043-0922-006
10 ft.	043-0922-010



DS3 Jack Specifications

Return loss	<-26dB at DS3, STS-1 and E3 signal rates
Insertion loss	<1.00dB at DS3 signal rates for modules with one monitor network
Monitor level	21dB +/- 1.5dB signal level
Contact resistance	<0.01 Ohms
Characteristic impedance	75 Ohms

Ethernet Modules

Cat 5e and Cat 6 compatible, these high-density modules feature RJ45 connectors and IDC fields for simple carrier-class connectivity.

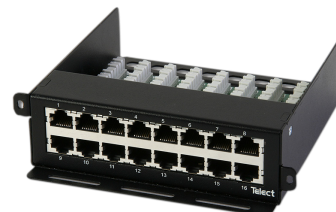
ELF-9716-1700

16-Termination Cat 5e Patch Module, RJ45-IDC

RJ45 connectors on the front

IDC field on the rear

Anchor points provide ample cable management



ELF-9716-1900

16-Termination RJ-RJ T1/Ethernet Patch Module

Up to 48 terminations in a 3-module/1 RU panel

Jack contacts wired straight through, enabling a wide range of applications

T1, DDS, Ethernet 10/100 circuit access and re-arrangement



ELF-9716-2300

8-Termination Cat 6 Patch Module, RJ45-IDC

RJ45 connectors on the front

IDC field on the rear

Anchor points provide ample cable management



Modular 1 RU Multifunction System

Copper :: T1/E1 DSX, T3/E3 DSX, Ethernet RJ, Optical Patch and Splice

Recommended Accessories for Ethernet Modules

Cat 5e Ethernet Patch Cords

3 ft.	EPCE-CT5E-BL03
5 ft.	EPCE-CT5E-BL05
7 ft.	EPCE-CT5E-BL07

Cat 6 Ethernet Patch Cords

3 ft.	EPCE-CAT6-BL03
5 ft.	EPCE-CAT6-BL05
7 ft.	EPCE-CAT6-BL07

Interconnect Modules

Engineered for applications with limited potential for change, customer premise and demarcation environments, interconnect modules feature hard-wired internal cross-connects to provide long-lasting quality connections between network elements.

ELF-9704-1119

4-Termination RJ48C/Wire-Wrap Module

Wire-wrap NE-1 (rear) and RJ48C NE-2 (front) jacks

Standard Bantam patch and monitor jacks



ELF-3004-1800

4-Termination RJ45 Total Front Access Module

All connections on the front of the module for simple access

RJ45 ports and Bantam jacks for monitoring



Recommended Accessories for Interconnect Modules

Single Bantam Patch Cords

3 ft.	040-1000-003
5 ft.	040-1000-005
10 ft.	040-1000-010

Dual Bantam Patch Cords

3 ft.	040-2000-003
5 ft.	040-2000-005
10 ft.	040-2000-010

T1 Cross-Connect Wire 06115RC

Optical Modules

Gain basic optical connectivity in the smallest footprint available today. Optical modules are engineered for low circuit count applications where space is a premium, with front access to enable simple maintenance. Fit in standard rack-mount chassis or one-module optical enclosure

Fiber Patch Modules

High-density patch capabilities in minimal space

ELF-PC12-SC00 (SC/UPC)

ELF-PC12-SA00 (SC/APC)

ELF-PC12-FC00 (FC/UPC)

ELF-PC24-LC00 (LC/UPC)



Fiber Patch and Splice Modules

Combination capabilities in a single module

ELF-SP12-SCPT (SC/UPC)

ELF-SP12-SAPT (SC/APC)

ELF-SP12-FCPT (FC/UPC)

ELF-SP12-LCPT (LC/UPC)



Loaded Fiber Patch Modules

High-density patch capabilities in minimal space

ELF-PC12-SCDF100 (SC/UPC, 100 ft pigtail)

ELF-PC12-SCDF300 (SC/UPC, 300 ft pigtail)

Custom configurations available, contact Telect for details



Optical Module Specifications

Return loss	<55dB
Insertion loss	<0.5dB
Mode	Single
Bypass	1310/1550 +/-20 nm

Modular 1 RU Multifunction System

Copper :: T1/E1 DSX, T3/E3 DSX, Ethernet RJ, Optical Patch and Splice

Recommended Accessories for Optical Modules

SC/UPC Patch Cords

3.6 m	F12-SSG-M003-6
5 m	F12-SSG-M005-0
7 m	F12-SSG-M007-0

FC/UPC Patch Cords

3.6 m	F12-FFG-M003-6
5 m	F12-FFG-M005-0
7 m	F12-FFG-M007-0

LC/UPC Patch Cords

3.6 m	F12-LLG-M003-6
5 m	F12-LLG-M005-0
7 m	F12-LLG-M007-0



Physical Specifications

Description	Width	Height	Depth	Weight	Capacity	Circuit Access & I/O	Agency Compliance
Chassis							
Standard 1 RU/3-Module Rack-Mount Chassis ELF-0000-2400	19" (483 mm)	1.75" (45 mm)	5" (127 mm)	5 lbs. (2.3 kg)	3 modules		NEBS, ITU-T
Total Front Access Wall-Mount Chassis ELF-0000-0600	6" (152 mm)	1.75" (45 mm)	4" (102 mm)	2 lbs. (.9 kg)	1 module		
Optical Wall-Mount Enclosure ELF-0000-0800	9.3" (236 mm)	2.3" (58 mm)	6.1" (155 mm)	2 lbs. (.9 kg)	1 module		
1 RU Chassis Wall-Mount Bracket 400641	19" (483 mm)	2" (51 mm)	8" (203 mm)	4 lbs. (1.8 kg)	1 chassis (3 modules)		
Blank Faceplate	19" (483 mm)	1.75" (45 mm)		2 lbs. (.9 kg)			
T1/E1 Modules							
8-Termination Wire-Wrap/BNC Module ELF-1008-1200 ELF-1008-1200	6" (152 mm)	1.64" (42 mm)	5.5" (140 mm)	2.5 lbs. (1.1 kg)	8 terminations	BNC I/O Wire-wrap XC Front XC	NEBS, ITU-T
8-Termination Wire-Wrap/RJ45 Module ELF-1008-1800	6" (152 mm)	1.64" (42 mm)	5.5" (140 mm)	2 lbs. (.9 kg)	8 terminations	RJ45 I/O Wire-wrap XC Front XC	NEBS, ITU-T
8-Termination Wire-Wrap Module ELF-1008-1100	6" (152 mm)	1.64" (42 mm)	5.5" (140 mm)	2 lbs. (.9 kg)	8 terminations	Wire-wrap I/O Wire-wrap XC Front XC	NEBS, ITU-T
6-Termination Total Front Access Wire-Wrap Module ELF-3006-1100	6" (152 mm)	1.62" (41 mm)	4.25" (108 mm)	2 lbs. (.9 kg)	6 terminations	Wire-wrap I/O Wire-wrap XC TFA	NEBS, ITU-T

Modular 1 RU Multifunction System

Copper :: T1/E1 DSX, T3/E3 DSX, Ethernet RJ, Optical Patch and Splice

	Width	Height	Depth	Weight	Capacity	Circuit Access & I/O	Agency Compliance
T1/E1 Modules continued							
6-Termination Total Front Access RJ48 Module ELF-3006-1800	6" (152 mm)	1.63" (41 mm)	3.75" (95 mm)	2 lbs. (.9 kg)	6 terminations	RJ48 I/O RJ48 XC TFA	NEBS, ITU-T
48-Pin VF Alarm Block Module ELF-0005-0001	6" (152 mm)	1.63" (41 mm)	3.75" (95 mm)	2 lbs. (.9 kg)	48 terminations	Wire-wrap Front XC	NEBS, ITU-T
T3/E3 Modules							
2-Termination Rear Cross-Connect DSX-3 Module ELF-3206-1200	6" (152 mm)	1.63" (41 mm)	5" (127 mm)	2 lbs. (.9 kg)	2 terminations	BNC I/O BNC XC Rear XC	NEBS, ITU-T
1-Termination Total Front Access DSX-3 Module ELF-3206-1900	6" (152 mm)	1.63" (41 mm)	5" (127 mm)	2 lbs. (.9 kg)	1 termination	BNC I/O BNC XC TFA	NEBS, ITU-T
Ethernet Modules							
16-Termination Cat 5e Patch Module, RJ45-IDC ELF-9716-1700	5.86" (149 mm)	1.63" (41 mm)	7.13" (181 mm)	1.5 lbs. (.7 kg)	16 terminations	IDC NE-1 RJ45 NE-2	
16-Termination RJ-RJ T1/Ethernet Patch Module ELF-9716-1900	5.86" (149 mm)	1.63" (41 mm)	5" (127 mm)	2 lbs. (.9 kg)	16 terminations	RJ NE-1 RJ NE-2	
8-Termination Cat 6 Patch Module, RJ45-IDC ELF-9716-2300	5.88" (149 mm)	1.63" (41 mm)	3.56" (90 mm)	1.5 lbs. (.7 kg)	8 terminations	IDC NE-1 RJ45 NE-2	
Interconnect Modules							
4-Termination RJ48C/Wire-Wrap Module ELF-9704-1119	5.25" (133 mm)	1.65" (42 mm)	5.25" (133 mm)	2 lbs. (.9 kg)	4 terminations	Wire-wrap NE-1 RJ48C NE-2 Front XC	
4-Termination RJ45 Total Front Access Module ELF-3004-1800	6" (152 mm)	1.63" (41 mm)	3.75" (95 mm)	2 lbs. (.9 kg)	4 terminations	RJ45 NE-1 RJ45 NE-2 TFA	
Optical Modules							
12-Fiber ELF Patch Modules	5.25" (133 mm)	1.65" (42 mm)	7.13" (181 mm)	2 lbs. (.9 kg)	12 fibers	TFA	
12-Fiber ELF Patch/Splice Modules	5.91" (150 mm)	1.65" (42 mm)	7.97" (202 mm)	2 lbs. (.9 kg)	12 fibers	TFA	
24-Fiber ELF Patch Modules	5.25" (133 mm)	1.65" (42 mm)	7.13" (181 mm)	2 lbs. (.9 kg)	24 fibers	TFA	
24-Fiber ELF Patch/ Splice Modules	5.91" (150 mm)	1.65" (42 mm)	7.97" (202 mm)	2 lbs. (.9 kg)	24 fibers	TFA	