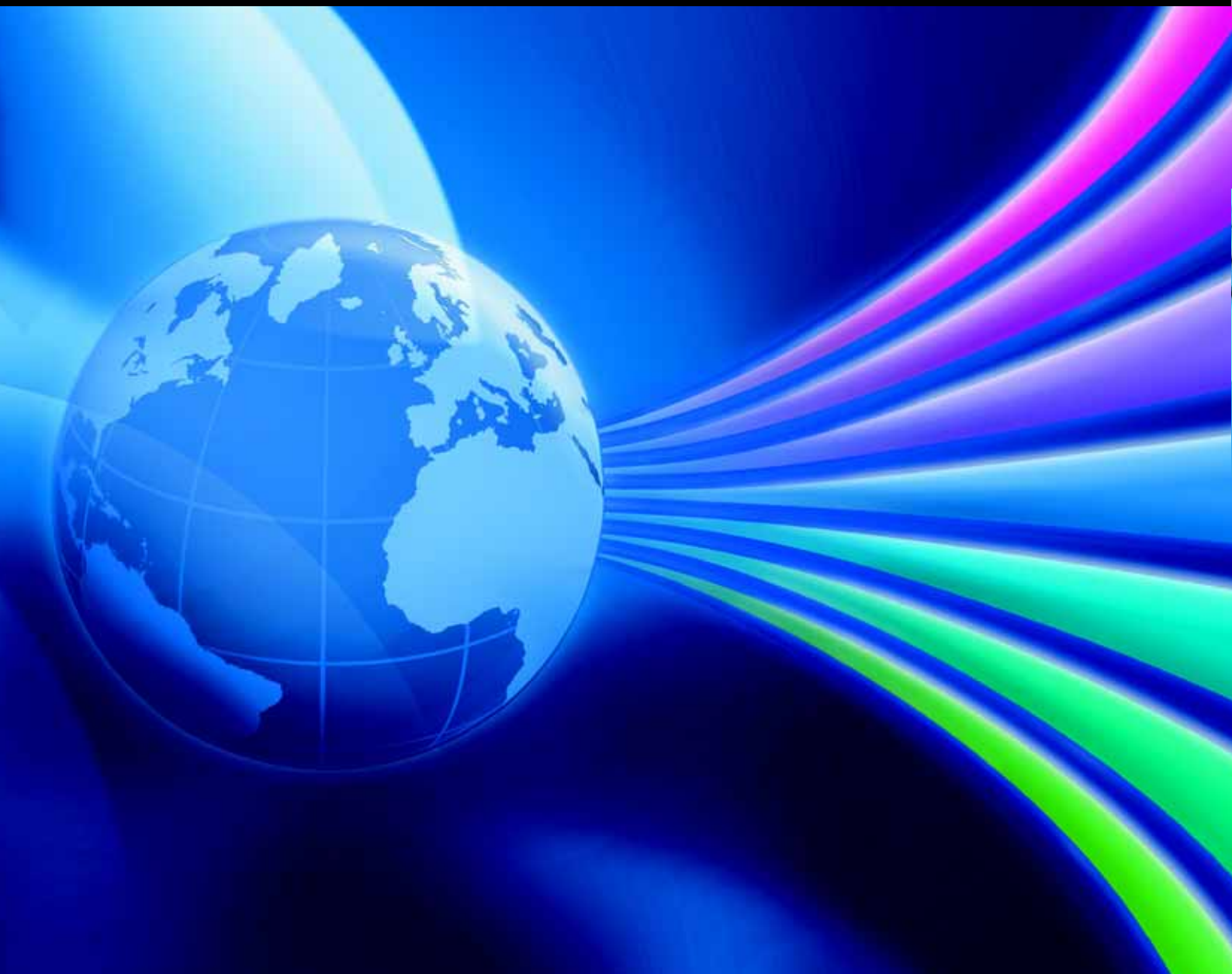
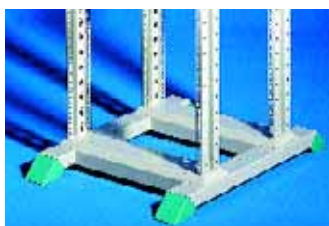


Catalogue 32



Global = Faster, better, more efficient.



Second mounting level

In order to accommodate 482.6 mm (19") network components or for the attachment of component shelves, slide rails and telescopic rails. The mounting level may be positioned on a 50 mm pitch pattern.

Minimum distance between levels 150 mm, maximum distance between levels 350 mm.

Material:

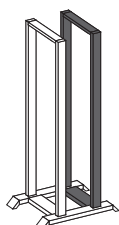
Sheet steel, 2 mm

Colour:

RAL 7035

Supply includes:

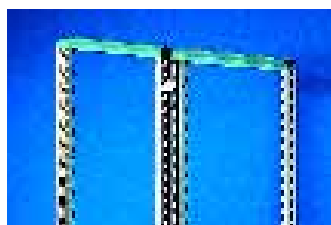
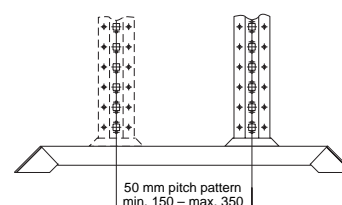
1 torsionally stiff section frame including assembly parts. 482.6 mm (19") punched profile at the front, hole centre distance 465 (470 mm at the rear), tailored to the attachment of patch panels and cable routing rails.



U	Model No. DK
31	7296.000
36	7297.000
40	7298.000
45	7299.000

Detailed drawing,

available on the Internet.



Baying connector

For assembling rows of distributor frames, or for cable routing between data racks.

Technical specifications:

Length: 53 mm

Colour:

RAL 7035

Packs of	Model No. DK
3	7494.000



Roof plate with cable route

For optimised use of the Data Rack as a corridor distributor or cable management rack. By moving the guide plates, the individual cableways can be separately sized, thus enabling structured cable routing in data highways, even in the roof area. On all Data Racks, the roof plate can be attached with two mounting levels and a distance between the levels of 350 mm.

Packs of	Model No. DK
1	7411.000

Material:

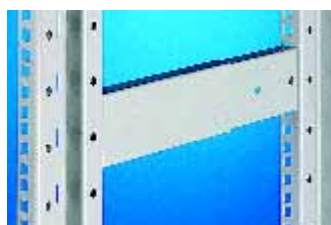
Sheet steel, spray-finished

Colour:

RAL 7035

Supply includes:

Roof plate including assembly parts.



Depth stays

For securing and stabilising two pairs of 482.6 mm (19") mounting angles in the Data Rack. The length of the depth stay is adjustable, and can accommodate the following spacings of mounting angles: 250, 300 and 350 mm.

Colour:

RAL 7035

Depth stays	Packs of	Model No. DK
	2	7401.000



Continuous slide rail

for two pairs of mounting angles, 482.6 mm (19")

The continuous slide rail is used to support heavy installed equipment in the Data Rack.

The mounting dimensions of the slide rails were selected to enable them to be combined with 500 mm deep, 482.6 mm (19") component shelves. The mounting distance of the 482.6 mm (19") mounting angles is 350 mm.

Requirements:

Second pair of mounting angles

Packs of	Model No. DK
2	7402.000

Material:

Sheet steel, zinc-plated, passivated



Accessories:

Component shelf, 500 mm deep, DK 7145.035, see page 1017.