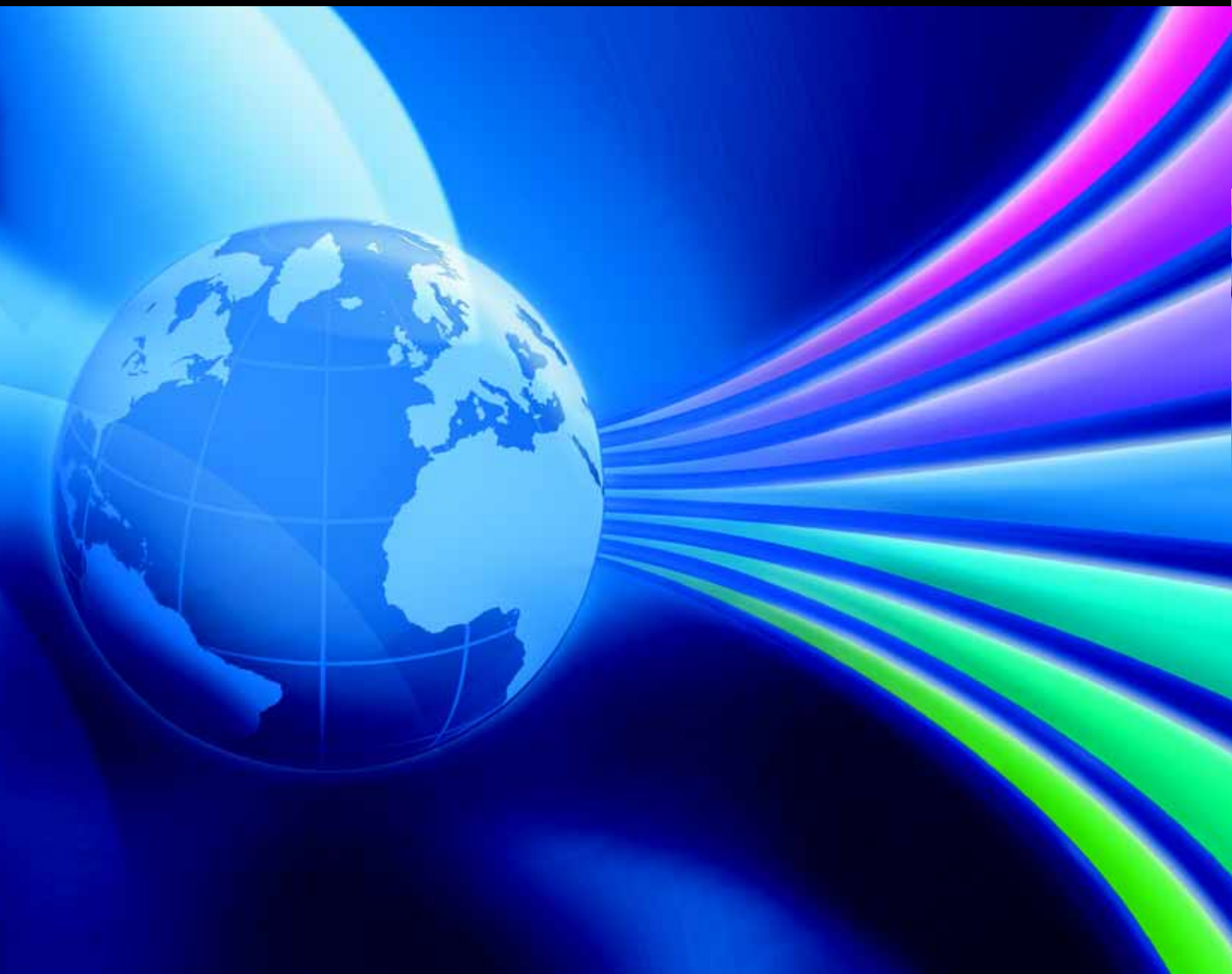


Catalogue 32



Global = Faster, better, more efficient.



Enclosure internal thermostat

Especially suitable for controlling fan-and-filter units, heaters and heat exchangers, this thermostat can also be used as a signal generator for monitoring the enclosure internal temperature.

Technical specifications:

- Bi-metal sensor as a temperature-sensitive element with thermal feedback.
- Contact population: Single-pole change-over contact as a quick-break contact.
- Permissible contact load:
Cat. 5 – 3 (heating)
AC 10 (4)⁽¹⁾ A,
DC = 30 W
cat 5 – 4 (cooling)
AC 5 (4)⁽¹⁾ A,
DC = 30 W
(⁽¹⁾) = inductive load at $\cos \varphi = 0.6$
- Setting range: +5°C to +60°C
- Weight: Approx. 105 g
- Dimensions: 71 x 71 x 33.5 mm
- Switching difference: Approx. 1 K ± 0.8 K.

Rated operating voltage	Model No. SK
230/115/60/48/24 V (AC)	3110.000
60/48/24 V (DC)	



- A broad voltage spectrum i. e. just one model covers 24 to 230 V.
- Time-saving connection technique using a terminal strip with a screw connection from the outside.
- Flexible mounting on a vertical or horizontal 35 mm support rail to EN 50 022, and snap fastening in the TS/ES enclosure section using the supplied adaptor.



Hygrostat

The hygrostat switches on the heater and/or fan when a preset relative humidity in the enclosure is exceeded.

In this way, the relative humidity is raised above the dew point, and condensation on assemblies or electronic components is avoided.

Technical specifications:

- Contact population: Single-pole change-over contact as a quick-break contact.
- Permissible contact load:
AC ~ 5 (0.2)⁽¹⁾ A
DC = max. 20 W
(⁽¹⁾) = inductive load at $\cos \varphi = 0.6$
- Setting range: 50 – 100 % relative humidity
- Weight: Approx. 100 g
- Dimensions: 71 x 71 x 33.5 mm
- Switching difference: Approx. 4 %

Rated operating voltage	Model No. SK
24 – 230 V (AC/DC)	3118.000

- A broad voltage spectrum i. e. just one model covers 24 to 230 V.
- Time-saving connection technique using a terminal strip with a screw connection from the outside.
- Flexible mounting on a vertical or horizontal 35 mm support rail to EN 50 022, and snap fastening in the TS/ES enclosure section using the supplied adaptor.



Bottom-mounted adaptor

for enclosure internal thermostat SK 3110.000 and hygrostat SK 3118.000

Bottom-mounted adaptor with mounting option for screwed cable glands, for targeted cable infeed from appropriate equipment such as SK fan-and-filter units and enclosure heaters. In conjunction with screwed cable glands, it is also suitable for use as strain relief.

Packs of	Model No. SK
1	3110.200