



TF-M3-20

Tower Face Mount with dual 20 ft x 3-1/2 in OD face supports, includes pipe

Dimensions

Face Width	6.1 m 20.0 ft
Pipe Outer Diameter	114.3 mm 4 1/2 in
Face Support Pipe Diameter	114.3 mm 4.5 in
Height	1600.2 mm 63.0 in
Length	304.8 mm 12.0 in
Weight	317.5 kg 700.0 lb
Width	6096.0 mm 240.0 in

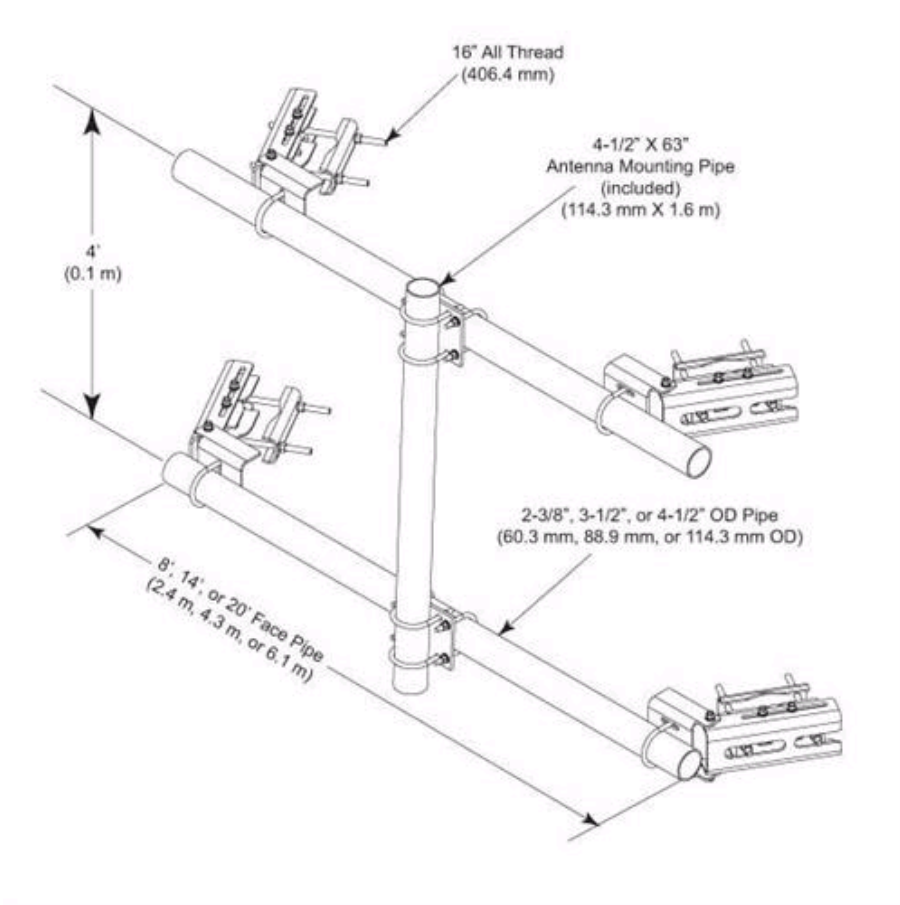
Environmental Specifications

EPA with 1/2 in (12 mm) radial ice	2.0 m ² 21.6 ft ²
EPA without ice	1.6 m ² 16.8 ft ²
Man Rating	250 lb vertical man load at 15 mph (BWS)

General Specifications

Product Type	Tower face mounts
Pipe Length	1600.2 mm 63.0 in
Pipe, quantity	1
Tower Taper	Non-tapered Tapered
Includes	Crossover plates Pipes Saddle mounts
Material Type	Hot dip galvanized steel
Mounting	Angle 60°, 203.2 mm (8 in) Angle 90°, 152.4 mm (6 in) Straight or tapered legs up to 203.2 mm (8 in) OD
Note	Effective Projected Area (EPA) calculated using horizontal booms, vertical pipe mount, and mounting brackets.
Package Quantity	1

Outline Drawing



Regulatory Compliance/Certifications

Agency	Classification
ISO 9001:2008	Designed, manufactured and/or distributed under this quality management system

Included Products

- MT-547 — Bulk Pipe, 3-1/2 in OD x 21 ft
- MT-653-63 — Plain End Pipe, 4-1/2 in OD x 63 in
- XP-3040 — Crossover Plate, joins 3-1/2 in to 4-1/2 in OD round members

* Footnotes

EPA with 1/2 in (12 mm) radial ice	EPA—Effective Projected Area
EPA without ice	EPA—Effective Projected Area
Man Rating	BWS—Base Wind Speed