



## Product Accessories

### Power over Ethernet Splitter

(24VDC, 24W)

- Supports High Power over 2-pairs - up to 30W input
- High power from data or spare pairs of ethernet line
- 10/100/1000 BASE-T Support (Gig)
- Safe & reliable power over existing Ethernet infrastructure
- IEEE 802.3at pre-standard
- IEEE 802.3af Compliant with higher power

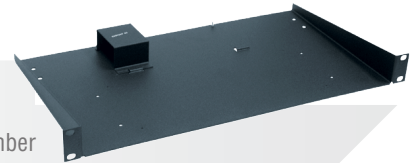
Part Number  
1200054



### DeviceMaster Rackmount Shelf

The DeviceMaster Rackmount Shelf is a 1U metal shelf that can be used to mount DeviceMaster RTS/UP/PRO/Serial Hub 4 or 8 port products in a standard 19 inch computer rack. Contact Control sales support for product information and ordering.

Part Number  
99160-1



### LC-ST Fiber Adapter Cable, Single-Mode and Multi-Mode

Length - 1 foot

Connectors - LC Male/ ST Female

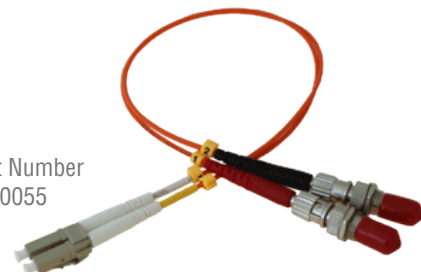
Cable Type - 9/125um (Single), 62.5/125um (Multi)

Duplex - Yes

Part Number  
1200056



Part Number  
1200055





Part Number  
30300-8

## DB9 Female to DB25 Female Adapter Kit

The RocketPort DB9F to DB25F adapter kit can be used to convert DB9M connections to DB25F. Each adapter kit contains four adapters with thumb screws. The adapters are RoHS compliant. This adapter kit takes the standard DB9 connection on the RocketPort INFINITY/EXPRESS interfaces and changes it to a DB25 connection.



Part Number  
1200047

## DB9F to RJ45 Adapter Kit

**4-Piece**

This kit contains 4 DB9F to RJ45 adapters for facilitating connection of RJ45 cabling to DeviceMaster DB9 products. This adapter kit works with Comtrol's DeviceMaster and RocketPort product families.



### PRODUCT SUPPORT & SERVICE INFORMATION

#### Warranty Information

Comtrol offers a 30-day satisfaction guarantee and 5-year limited warranty.

#### Sales Support

+1.763.957.6000  
sales@comtrol.com

#### Technical Support

+1.763.957.6000  
www.comtrol.com/support

#### Email, FTP, and Web Support

info@comtrol.com  
ftp.comtrol.com  
www.comtrol.com