

# SNC-DH180

Network HD Mini Dome Camera — V Series

**SONY**  
make.believe

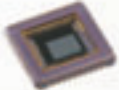

## HD Security Camera with IR Illuminators and View-DR Technology

Sony is pleased to introduce a powerful addition to its network HD camera lineup, the SNC-DH180. This vandal-resistant, wide dynamic range camera is designed with a built-in infrared (IR) illuminators. As a dual-stream network camera, it supports H.264, MPEG-4, and JPEG compression formats, and delivers excellent picture quality in HD 720p resolution at 30 frames per second (fps).

Incorporating the new Exmor™ CMOS image sensor from Sony, which is specially designed for surveillance applications, this rugged camera features state-of-the-art image-enhancement technology, View-DR™, which delivers an extremely wide dynamic range. The SNC-DH180 also features an IR illuminators to deliver quality images even in absolute darkness (0 lx)\*1. Along with a host of superb features such as DEPA™ Advanced, PoE, a built-in heater, and the Easy Focus/Easy Zoom functions, the SNC-DH180 Mini Dome Network Camera is ideal for the most demanding surveillance applications.



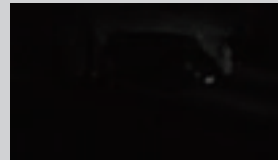
### FEATURES

- Excellent picture quality in HD 720p resolution, supporting H.264 at 30 fps **HD**
- 1.3 Megapixel (1280 x 1024) maximum resolution
- The Exmor CMOS sensor delivers high image quality and high sensitivity for surveillance **Exmor™** 
- Clearly captures objects in the dark up to 49 feet (15 m) away with IR illuminators, which allow the camera to operate in 0 lx lighting conditions \*1 (Images 1)
- Wide dynamic range achieved by the innovative View-DR (Visibility enhanced wide Dynamic Range) technology (Images 2) **View-DR™**
  - ▶ Full-capture Wide-D technology – all of the electrons converted from the captured light are fully used
  - ▶ High-speed Exmor CMOS sensor
  - ▶ Visibility enhancer technology
- The Visibility Enhancer optimizes contrast and makes the subject more visible, even in severe backlight or shadow conditions
- XDNR™ (eXcellent Dynamic Noise Reduction) technology for clear images without motion blur under low illumination (Images 3)
- Easy Focus / Easy Zoom functions for easy installation
- DEPA Advanced Intelligent Video and Audio Analytics trigger an alarm, based on user-defined rules
  - ▶ Intelligent Motion Detection 
  - ▶ Tamper Alarm
- Three codecs (H.264, MPEG-4, JPEG) with dual streaming capability
- Power over Ethernet (PoE) capability
- Built-in heater for use in cold
- IP66-rated
- ONVIF™ software (Open Network Video Interface Forum) **ONVIF**

#### Drastic Improvement in Visibility

##### IR Illuminators

(Images 1)



OFF

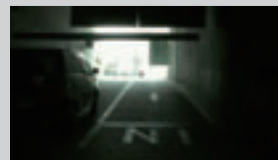


ON

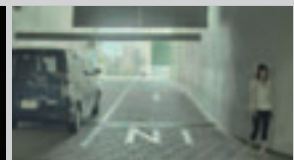
Actual Images

##### View-DR Technology (Visibility enhanced wide Dynamic Range)

(Images 2) **View-DR™**



OFF

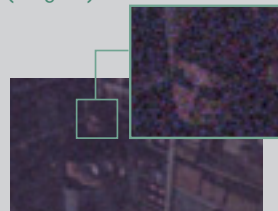


ON

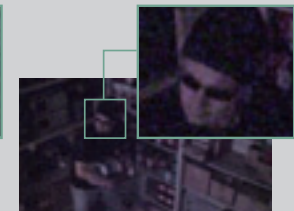
Actual Images

##### XDNR™ Technology (eXcellent Dynamic Noise Reduction)

(Images 3)



OFF



ON

Actual Images

\*1 0 lx requires the use of IR illuminators.  
IR rays are not visible to the human eye.  
When the IR illuminators is activated, the image is in black and white.

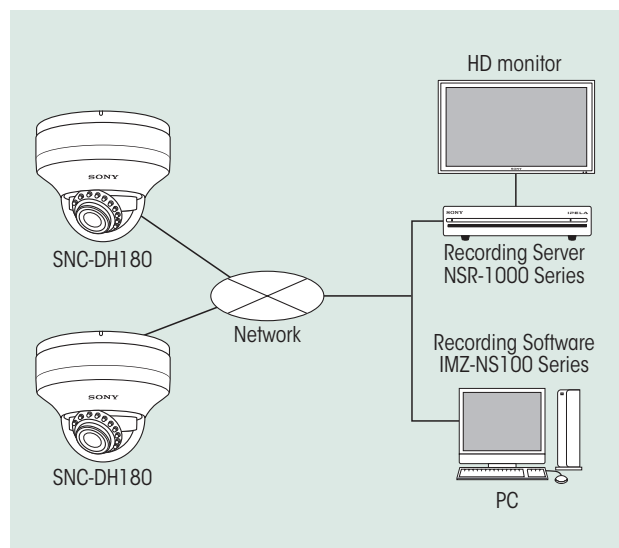
## SPECIFICATIONS

SNC-DH180	
<b>Camera</b>	
Image device	1/3 type progressive scan Exmor CMOS sensor
Minimum illumination	0.2 lx (Color) 0 lx (B/W) - IR ON (F1.2 / View-DR Off/VE Off / AGC High(48dB max.) / XDNR Middle / 50IRE [IP])
Number of effective pixels (H x V)	1.4 Megapixel (1329 x 1049)
Electronic shutter speed	1s to 1/10000s
Gain control	Auto (3 levels)
Exposure control	Auto, EV Compensation *, Auto Slow Shutter *
White balance mode	Auto (ATW, ATW-PRO), Preset, One-push WB, Manual
Lens type	Vari-focal lens
Zoom ratio	Optical 2.9X (x2 Digital Zoom)
Horizontal viewing angle	85.4 to 31.2 degrees
Focal length	f=3.1 to 8.9 mm
F-number	F1.2 (wide), F2.1 (tele)
Minimum object distance	300 mm
Powered Focus	Yes (Easy Focus)
Powered Zoom	Yes (Easy Zoom)
IR illuminators	Yes (Wave Length: 850nm [Typical], IR LED: 21pcs)
<b>Camera Features</b>	
Day/Night *	Yes
Wide-D	View-DR Technology (130 dB)
Image enhancement	Visibility Enhancer
Noise reduction	XDNR Technology
<b>Image</b>	
Codec image size (H x V)	1280 x 1024, 1280 x 960, 1280 x 800, 1280 x 720, 1024 x 768, 1024 x 576, 800 x 480, 768 x 576, 640 x 480, 640 x 368, 384 x 288, 320 x 240, 320 x 192 (H.264, MPEG-4, JPEG)
Video compression format	H.264, MPEG-4, JPEG
Codec streaming capability	Dual streaming
Maximum frame rate	H.264: 20fps (1280 x 1024) MPEG-4: 25fps (1280 x 1024) JPEG: 30fps (1280 x 1024) H.264/MPEG-4/JPEG: 30 fps (1280 x 720)
<b>Audio</b>	
Audio compression	G.711/G.726
<b>Scene Analytics</b>	
Intelligent motion detection	Yes (with built-in Post Filter)
Intelligent object detection	No
Rule filter	Yes
<b>Network</b>	
Protocols	IPv4, IPv6, TCP, UDP, ARP, ICMP, IGMP, HTTP, HTTPS, FTP (client/server), SMTP, DHCP, DNS, NTP, RTP/RTCP, RTSP, SNMP (MIB-2)
ONVIF software	Yes
Wireless network	No
Number of clients	10
Authentication	IEEE802.1X
<b>Analog Video Output</b>	
Signal system	NTSC / PAL
Horizontal resolution	600 TV lines
S/N ratio	More than 50dB
<b>Interface</b>	
Ethernet	10BASE-T / 100BASE-TX (RJ-45)
Serial interface	No
Card slots	No
Analog video output	BNC x 1, RCA x 1
Sensor input	x 1
Alarm output	x 2
External microphone input	Mini-jack (Monaural), MIC IN/LINE IN: 2.5VDC plug-in power
Audio line output	Mini-jack (Monaural), Max output level: 1 Vrms
<b>General</b>	
Weight	3 lb 1 oz (1380 g)
Dimensions (ø x H)	6 5/8 x 4 3/4 inches (166 x 119 mm)
Power requirements	PoE *, AC24V, DC12V
Power consumption	28 W max.
Starting temperature	AC24V/DC12V: -4 to 122°F (-20 to 50 °C) PoE (IEEE802.3af): 32 to 122°F (0 to 50 °C)
Working temperature	AC24V/DC12V: -22 to 122°F (-30 to 50 °C) PoE (IEEE802.3af): 23 to 122°F (-10 to 50 °C)
Storage temperature	-4°F to 140 °F (-20°C to +60°C)
Ingress Protection	IP66
Vandal Resistant	IK10
<b>System Requirements</b>	
Operating system	Windows XP™, Windows Vista™
Processor	Intel Core2 Duo 2 GHz or higher
Memory	1 GB or more
Web browser	Microsoft Internet Explorer® Ver 6.0 or 7.0
<b>Supplied Accessories</b>	
CD-ROM (User's Guide, SNC Toolbox), Installation manual, Wire rope, Bracket, BNC cable, I/O cable, Audio cable, M4 shoulder screw, M4 screw x 4, Flyer, L-wranch, B&P Warranty Booklet, Template	

\*1 VE off mode only. \*2 View-DR off mode only. \*3 Removable IR Cut Filter. \*4 When used with PoE, SNC-DH180 cannot be used with a heater.

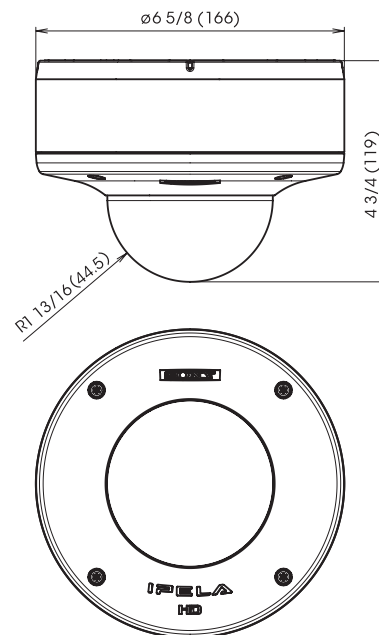
The SNC-DH180 includes software developed by the OpenSSL Project for use in the OpenSSL Toolkit (<http://www.openssl.org/>).

## SYSTEM CONFIGURATIONS



## DIMENSIONS

Unit: inches (mm)



© 2010 Sony Electronics Inc. All rights reserved.  
 Reproduction in whole or in part without written permission is prohibited.  
 Features and specifications are as subject to change without notice.  
 Weights and measurements are approximate.  
 Sony, 'make.believe', DEPA, IPELA, Exmor, ONVIF, View-DR, XDNR  
 and their respective logos are trademarks of Sony.  
 Windows, XP, and Vista are trademarks of Microsoft Corporation.  
 All other trademarks are the property of their respective owners.