



## ESL DH Series

Electromagnetic Fire Door Holders

### Overview

The DH Series Electromagnetic Fire Door Holders are constructed of the finest materials available. Each wall mount door holder is made of durable die-cast metal and finished in a high luster double chrome or brass plating for a high quality appearance.

For wall mount units, standard dual voltage AC or DC inputs reduce stocking requirements with 12/24V and 24/120V models. The 24/120V model draws a mere 15mA @ 24VAC or DC, helping keep overall job costs to a minimum.

Installation is easy with the ESL DH Series installation technique— an adhesive template assures alignment without secondary adjustments. No brackets are required for recessed, flush or surface mounting (the surface mounting box has three conduit ready entries). Plus, the new catch plate features two pivot points and two way adjustability to further ensure perfect alignment. Optional extension rods are also available for providing the proper gap distance between the door and wall. (Recess mounted door holder includes a 3" extension rod).

The basic units offer superiority reliability with built-in transient protection and low residual magnetism so they release easily even on new ADA low pressure door closers.



ESL Door Holders Wall & Floor Mount (insert)

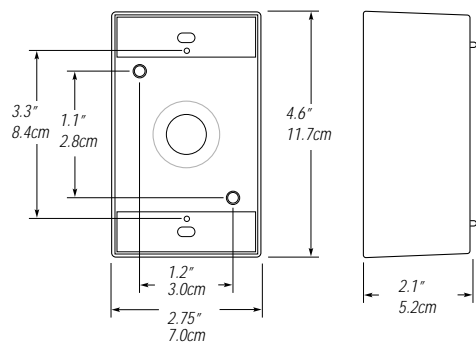
### Standard Features

- **Extremely low current draw. Only 15mA @ 24V saves on power supplies and backup batteries**
- **New recessed mount for lowest profile look**
- **Dual voltage inputs in each unit reduces stocking requirements**
- **Self-adjusting swivel catch-plate reduces installation time and adjusts to door alignment changes**
- **Optional extension rods make installation even faster**
- **Low residual magnetism easily releases even on new ADA low pressure door closers**
- **Built-in transient protection**
- **Floor mount units available, both single and double-coil**

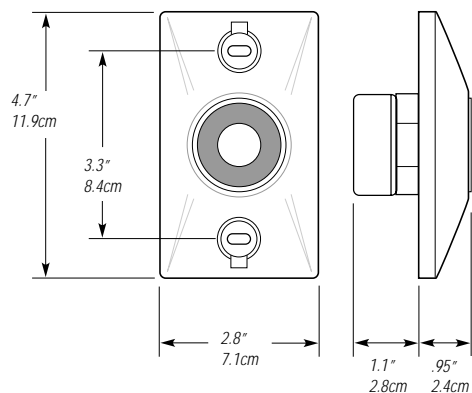
# DH Series

Electromagnetic Fire Door Holders

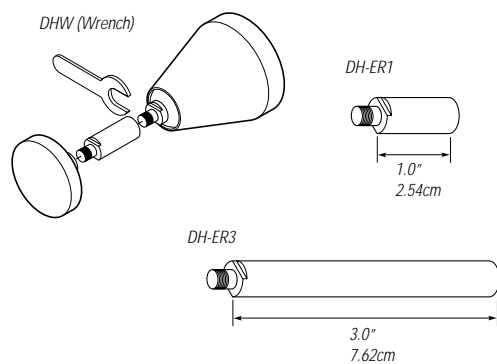
## Surface Mount Back Box Dimensions



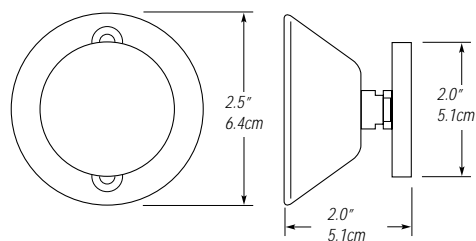
## Door Magnet



## Extension Rod Applications and Accessories



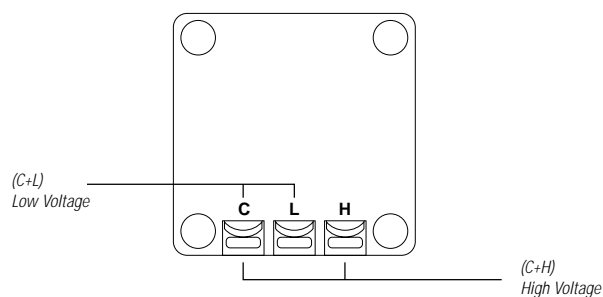
## Catch Plate Assembly



# DH Series

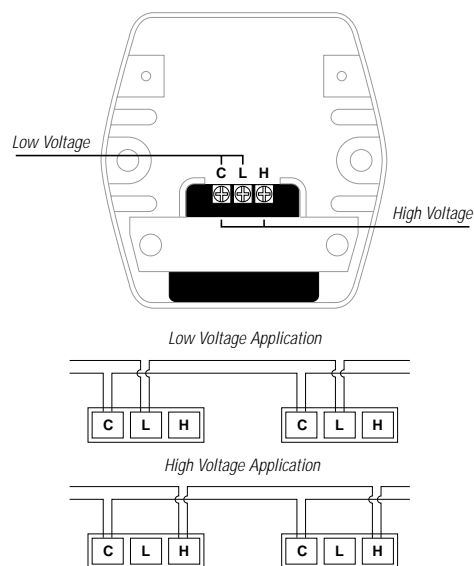
Electromagnetic Fire Door Holders

## Dual Voltage Terminal Diagram for Flush Mount, Recessed or Surface Mount



## Dual Voltage Terminal Diagram for Floor Mount

Voltage References  
C = common  
L = low  
H = high



## Performance Data

Model	Voltage	DC/mA	AC/mA	Terminals	Coil	lbs	kg. (Nominal)
DHX*-1224	12V	30	30	C&L	Single	35	15.9
	24V	15	15	C&H	Single	35	15.9
DHX*-24120	24V	15	15	C&L	Single	35	15.9
	120V	–	15	C&H	Single	35	15.9
DHFM†-1224	12V	60	60	C&L	Double	35	15.9
	24V	60	60	C&H	Double	35	15.9
DHFM†-24120	24V	30	30	C&L	Double	35	15.9
	120V	–	30	C&H	Double	35	15.9

\* For all models, "X" represents either F (Flush Mount), FM (Floor Mount single-coil), R (Recessed), or S (Surface Mount).

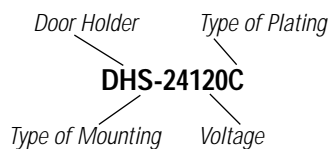
† For Floor Mount, double coil models.

NOTE: Voltage supplied by a UL listed control panel

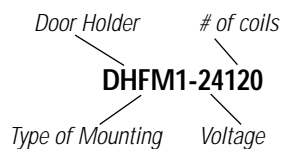
# DH Series

Electromagnetic Fire Door Holders

## DHS-24120C



## DHFM1-24120



### Ordering Information

Model	Description	Case Qty.
<b>Wall Mount</b>		
DHR-1224C	ESL 12 or 24 VDC/VAC, recess-mount, chrome, with 3" Extension Rod	20/case
DHR-24120C	ESL 24 VDC/VAC 120VAC, recess-mount, chrome, with 3" Extension Rod	20/case
DHF-1224C	ESL 12 or 24 VDC/VAC, semi-flush-mount, chrome	20/case
DHF-1224B	ESL 12 or 24 VDC/VAC, semi-flush-mount, brass	20/case
DHF-24120C	ESL 24 VDC/VAC 120VAC, recess-mount, chrome	20/case
DHF-2410B	ESL 24 VDC/VAC 120VAC, semi-flush-mount, brass	20/case
DHS-1224C	ESL 12 or 24VDC/VAC, surface-mount, chrome	20/case
DHS-1224B	ESL 12 or 24VDC/VAC, surface-mount, brass	20/case
DHS-24120C	ESL 24VDC/VAC 120VAC, surface-mount, chrome	20/case
DHS-24120B	ESL 24VDC/VAC 120VAC, surface-mount, brass	20/case
<b>Floor Mount</b>		
DHFM1-1224	Single coil, 12 or 24VDC/VAC, floor-mount, brushed steel, UL only, CUL pending	6/case
DHFM1-24120	Single coil, 24VDC/VAC 120VAC, floor-mount, brushed steel, UL only, CUL pending	6/case
DHFM2-1224	Double coil, 12 or 24VDC/VAC, floor-mount, brushed steel, UL only, CUL pending	6/case
DHFM2-24120	Double coil, 24VDC/VAC 120VAC, floor-mount, brushed steel, UL only, CUL pending	6/case
<b>Extension Rods</b>		
DH-ER1C	1" chrome	
DH-ER1B	1" brass	
DH-ER3C	3" chrome	
DH-ER3B	3" brass	
<b>Accessories</b>		
DHW	Extension rod wrenches	
DH-BP	Back Plate (chrome or brass)	
DH-ARMC	Replacement armature, chrome	
DH-ARMB	Replacement armature, brass	



GE Interlogix

www.GE-InterlogixSecurity.com

12345 SW Leveton Drive  
Tualatin, OR 97062

Phone: 503-692-4052

USA & Canada: 800-547-2556

Technical Service: 800-648-7424

Faxback: 800-483-2495

2266 Second Street North  
North St. Paul, MN 55109

Phone: 651-777-2690

USA & Canada: 800-777-5485

Technical Service: 800-777-2624