



SENTROL

1138T Series Surface Mount Terminal

Gap distance

Closed loop

1"

1138T

Color

White

Mahogany
brown

Quantity

10



1138T-N

100% TESTED

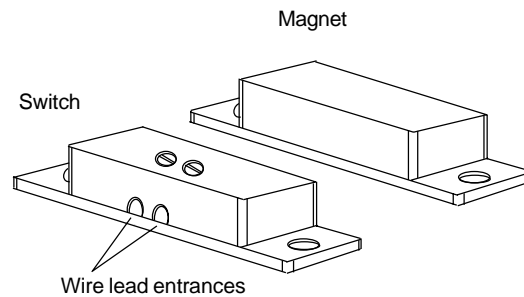


0 46188 08600 9

1138T Series Magnetic Contacts Surface Mount Terminal

Installation Instructions

- Step 1: Run the system wiring to the switch location.
- Step 2: Align and mount the switch and the magnet with either the tape or screws provided. Orient as shown in the drawing below.
- Step 3: Insert wires through the wire lead entrances into the screw terminals. Tighten the screws.



Specifications

Part Number	Loop Type	Electrical Configuration	Gap Distance
1138T	Closed	NO	Nominal 1" Min Make 0.8" Max Break 2.2"

FORM A 1138T
Voltage: 30VAC/DC MAX
Current: 0.5A MAX
Power: 7.5W MAX
Use only wire sizes 18-22 gauge



PH 503.692.4052
USA & Canada: 800.547.2556
Technical Service: 800.648.7424 FaxBack: 800.483.2495
www.sentrol.com www.interlogixsecurity.com

©2001 Interlogix, Inc.
Interlogix, Caddx, ESL, ITI and Sentrol are
trademarks of Interlogix, Inc.
All other trademarks are properties of their

1035748 REV B 09/01