

# TruVision™ Covert PIR Camera Installation Manual



**Copyright** © 2010 GE Security, Inc.

This document may not be copied in whole or in part or otherwise reproduced without prior written consent from GE Security, Inc., except where specifically permitted under US and international copyright law.

**Disclaimer** The information in this document is subject to change without notice. GE Security, Inc. ("GE Security") assumes no responsibility for inaccuracies or omissions and specifically disclaims any liabilities, losses, or risks, personal or otherwise, incurred as a consequence, directly or indirectly, of the use or application of any of the contents of this document. For the latest documentation, contact your local supplier or visit us online at [www.gesecurity.com](http://www.gesecurity.com).

This publication may contain examples of screen captures and reports used in daily operations. Examples may include fictitious names of individuals and companies. Any similarity to names and addresses of actual businesses or persons is entirely coincidental.

**Trademarks and patents** GE and the GE monogram are trademarks of General Electric Company.

Other trade names used in this document may be trademarks or registered trademarks of the manufacturers or vendors of the respective products.

**Intended use** Use this product only for the purpose it was designed for; refer to the data sheet and user documentation for details. For the latest product information, contact your local supplier or visit us online at [www.gesecurity.com](http://www.gesecurity.com).

**FCC compliance** This equipment has been tested and found to comply with the limits for a Class A digital device, pursuant to part 15 of the FCC Rules. These limits are designed to provide reasonable protection against harmful interference when the equipment is operated in a commercial environment. This equipment generates, uses, and can radiate radio frequency energy and, if not installed and used in accordance with the instruction manual, may cause harmful interference to radio communications.

You are cautioned that any changes or modifications not expressly approved by the party responsible for compliance could void the user's authority to operate the equipment.

**Manufacturer** GE Security, Inc.

HQ and regulatory responsibility:  
GE Security, Inc., 8985 Town Center Parkway,  
Bradenton, FL 34202, USA

**European Union directives**



**2002/96/EC (WEEE directive):** Products marked with this symbol cannot be disposed of as unsorted municipal waste in the European Union. For proper recycling, return this product to your local supplier upon the purchase of equivalent new equipment, or dispose of it at designated collection points. For more information see: [www.recyclethis.info](http://www.recyclethis.info).

**Contact information** For contact information see our Web site: [www.gesecurity.com](http://www.gesecurity.com).  
For contact information see our Web site: [www.gesecurity.eu](http://www.gesecurity.eu).

## PREFACE

This document includes an overview of the product and detailed instructions explaining how to install and operate the unit. There is also information describing how to contact technical support if you have questions or concerns.

To use this document effectively, you should have the following minimum qualifications:

- a basic knowledge of CCTV systems and components; and
- a basic knowledge of electrical wiring and low-voltage electrical hookups.

Read these instructions and all ancillary documentation entirely before installing or operating this product. The most current versions of this and related documentation may be found on our website.

**Note:** A qualified service person, complying with all applicable codes, should perform all required hardware installation.

These terms may appear in this manual:



**\* WARNING:**

Improper use of this equipment can cause severe bodily injury or equipment damage.

---



**\*\* CAUTION:**

Improper use of this equipment can cause equipment damage.

---

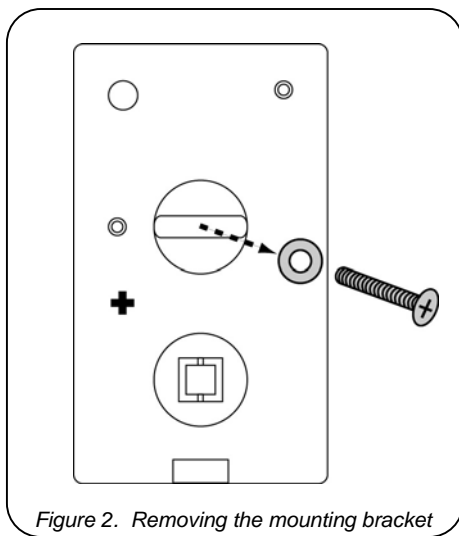
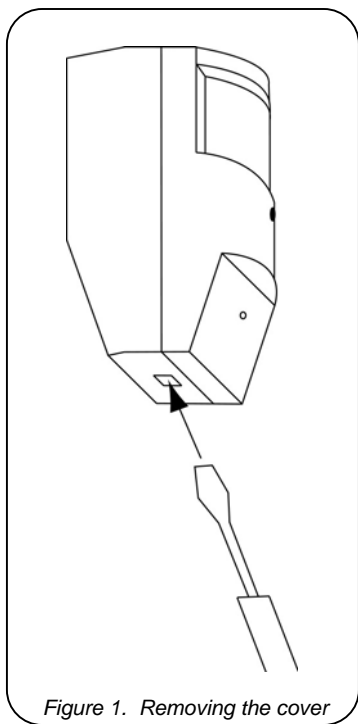
**Note:** Notes contain important information about a product or procedure.

\* This symbol indicates electrical warnings and cautions.

\*\* This symbol indicates general warnings and cautions.

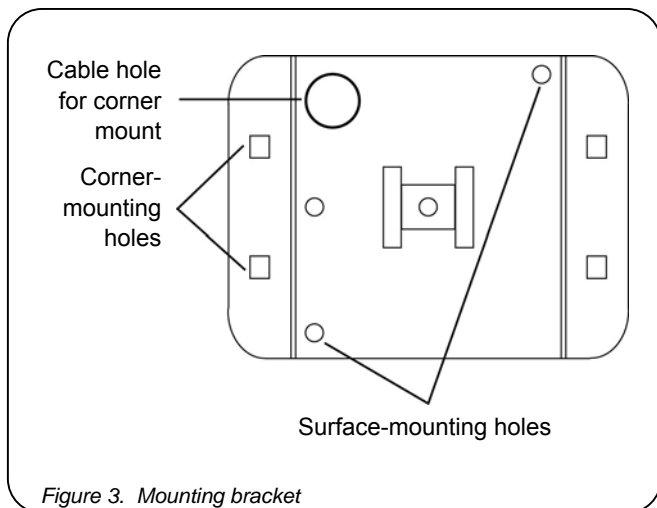
## MOUNTING THE UNIT

- 1) Remove the cover (see Figure 1).
- 2) Unplug the cable.
- 3) Detach the wires by loosening the terminal screws.
- 4) Remove the mounting bracket by removing the screw and washer (see Figure 2).



**Note:** Mount the camera with a 3/8-inch (1 cm) clearance from the ceiling. For optimal PIR coverage using the standard lens, mount the PIR 7 feet (2 m) above the floor. You may have to compromise to get good camera coverage.

- 5) Mark the mounting holes on the mounting surface (see Figure 3).



**Note:** The corner-mounting tabs can be removed for surface mounting.

- 6) Secure the mounting bracket to the mounting surface using the provided screws and raw plugs.

**CAMERA SPECIFICATIONS**

<b>Model</b>	<b>TVC-SDC2-HR</b>	<b>TVD-SDS3-HR</b>
Image sensor	1/3-in. interline transfer CCD	1/3-in. interline transfer CCD
Total Pixels	NTSC: 811 (H) x 508 (V)	NTSC: 811 (H) x 508 (V)
Effective Pixels	NTSC: 768 (H) x 494 (V)	NTSC: 768 (H) x 494 (V)
Scanning system	525 lines/ 60 fields	525 lines / 60 fields
Sync system	2:1 Internal	2:1 Internal
Resolution	550 TV lines	550 TV lines
S/N ratio	>51 dB (AGC Off)	>51 dB (AGC Off)
Electronic shutter	AUTO 1/60 ~ 1/100,000 sec	AUTO 1/60 ~ 1/100,000 sec
Min. Illumination	0.4 Lux/F2.0	0.4 Lux/F2.0
Video output	Composite 1.0 Vp-p/75 Ω	Composite 1.0 Vp-p/75 Ω
Lens Type	Pinhole: 2.8mm	Pinhole: 3.87mm
Power source	DC12V	DC12V
Current	100mA (Max)	100mA (Max)
Operating Temperature	-10° to 50° C 14° to 122° F	-10° to 50° C 14° to 122° F
Storage Temperature	-20° to 70° C -4° to 158° F	-20° to 70° C -4° to 158° F

