

# POD7CN & POD7CWN

# Housings: Outdoor Dome

## MODELS

**POD7CN** - 7" Outdoor dome housing,  
pendant mount, clear dome for unitized cameras

**POD7CWN** - 7" Outdoor dome housing,  
wall mount, clear dome for unitized cameras

## PRODUCT FEATURES

- Pendant or wall mount models available
- Easy camera installation
- Tamper resistant access screws
- 24 Hour fan operation for effective heating and condensation protection
- Thermostatically controlled 24VAC heater
- Separate power input for H&B and camera power
- Surge protection for video line and power line
- Optically clear dome material

## ELECTRICAL SPECIFICATIONS

Power: 24 VAC 52 watts (excluding camera)

24 VAC 68 watts (with camera)

Surge Protector (Video): Clamping differential mode  
voltage between 240-300V and common  
mode voltage from 27-36V

## MECHANICAL SPECIFICATIONS

### Size (HxWxD):

POD7CN: 14" x 10" x 10" (356 x 254 x 254mm)

POD7CWN: 14" x 15" x 10" (356 x 381 x 254mm)

Weight: 7 lbs. (3.2Kg) without camera

### Construction:

Upper Housing: .25" (6mm) high impact,

UV stable white ABS plastic

Lower Dome: 7" Cell-cast acrylic (distortion free)

Internal Brackets: 14 and 16-gauge

powder coated steel

Mounting Brackets: Cast or machined aluminum

## ENVIRONMENTAL SPECIFICATIONS

Operating Temperature: -20° F to +120° F

(-29 to 50°C)

Heater activates at +40° F (5°C), deactivates at

+60° F (15°C), 24VAC, 50W

Blower: Continuous operation

## STANDARD ACCESSORIES

- 8 pc. Molex male pins
- 2 pc. Molex 4 position connectors
- 1 pc. POD7CN/CWN instructions
- 4 pc. 8-32 Phillips head screws for mount camera
- 4 pc. 1" Long aluminum standoffs
- 3 pc. Cable ties for wire management
- 1 pc. Security tool (Toolhead driver)

## SHIPPING

POD7CN/POD7CWN: 11 lbs (5 Kg)

17" x 14" x 18" (432 x 356 x 457mm)



POD7CN



POD7CWN

## DESCRIPTION

The **POD7CN** and **POD7CWN** are 7" outdoor dome housings for WV-CS954/WV-CS574/WV-NS324 unitized dome camera systems. A heater and blower are standard on all models.

## OPTIONS/ACCESSORIES

### POD7CN:

- |                |   |
|----------------|---|
| <b>PPMF12D</b> | - Pendant mount bracket                         |
| <b>PWM20G</b>  | - Aluminum, gooseneck wall mount bracket        |
| <b>PWM30G</b>  | - Aluminum, parapet mount bracket w/o extension |
| <b>PPRM30G</b> | - Aluminum, parapet mount bracket               |

### POD7CWN:

- |                   |                                    |
|-------------------|------------------------------------|
| <b>PACA2</b>      | - Aluminum, corner mount adaptor   |
| <b>PAPM3</b>      | - Aluminum, pole mount adaptor     |
| <b>PSRCW2000B</b> | - Heavy-duty parapet mount bracket |

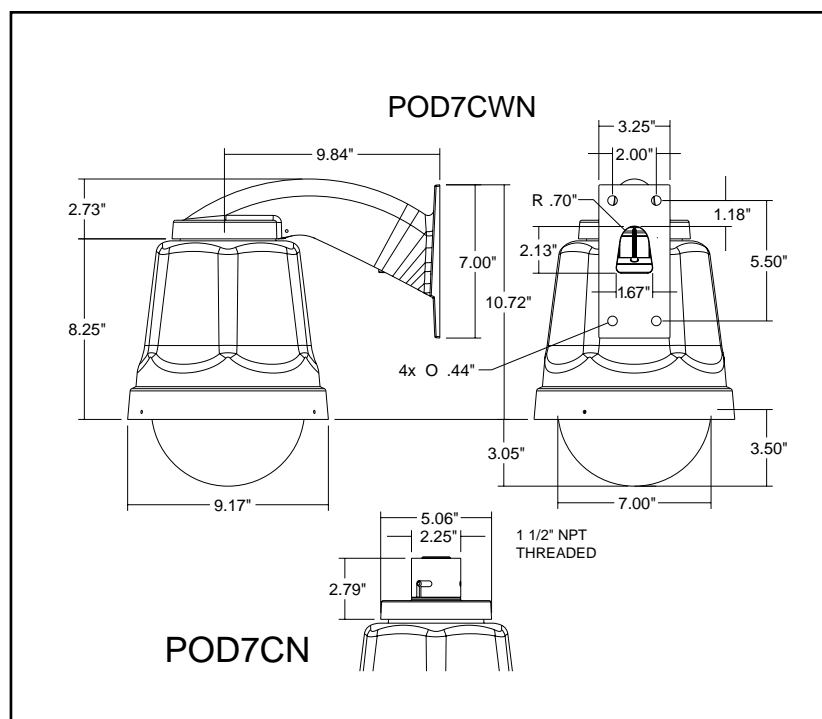


**Panasonic** ideas for life

## BID SPECIFICATIONS

The outdoor dome camera housing shall be a Panasonic Model POD7CN/POD7CWN or equivalent. The housing shall be designed for the Unitized Surveillance Device Series WV-CS954/WV-CS574/WV-NS324. The housing shall be constructed of UV stable white ABS plastic, acrylic, and aluminum & steel brackets. The lower dome portion shall be constructed of distortion-free acrylic and be 7" in diameter, and shall be held in place with minimum of (3) security fasteners. The housing shall include a camera mounting bracket that integrates a heater, blower, video and power surge protector capable of clamping differential node voltage between 240-300V

and common mode voltage from 27-36V. The housing shall support a temperature range of -20° to 120°F (-29° to 50°C), with the 50W heater turning on at 40°F (5°C) and turn off at 60°F (15°C). The housing shall be powered with 24VAC (60Hz) and have a power consumption not to exceed 68W including Unitized Camera. Pendant mount model (POD7CN) shall include an integral fitting compatible with standard 1 1/2" NPT pipe suitable for outdoor pendant mounting. The POD7CWN shall include an integral wall mount with four (4) mounting holes in a 5.5" H x 2" W (140mm x 51mm) mounting pattern.



## Panasonic ideas for life

DISTRIBUTED BY:

**Panasonic System Solutions Company**  
Unit of Panasonic Corporation of North America  
**Security Systems**

Executive Office: Three Panasonic Way, Secaucus, NJ 07094  
Zone Offices:

**Eastern:** Three Panasonic Way, Secaucus, NJ 07094 (201) 392-4546

**Southern:** 1225 Northbrook Parkway, Suwanee, GA 30024 (770) 338-6843

**Central:** 1707 North Randall Road, Elgin, IL 60123 (847) 468-5211

**Western:** 6550 Katella Avenue, Cypress, CA 90630 (714) 373-7840

[www.panasonic.com/security](http://www.panasonic.com/security)