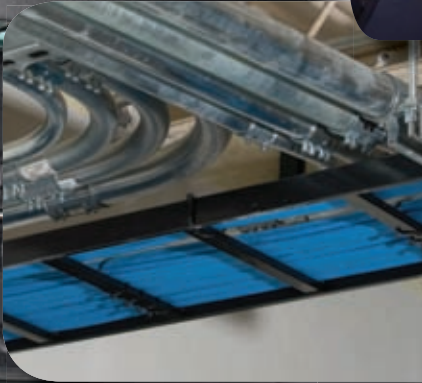
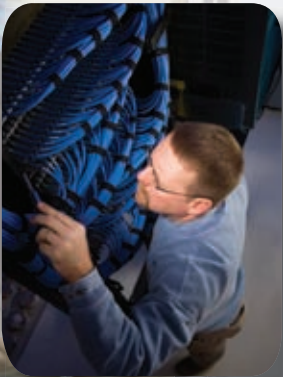




# COPPER

## CABLE

Hubbell's UTP and FTP cable are specifically designed and balanced to provide a high-performance, end-to-end system. All cable are specifically designed to meet performance and budget needs while extending the life span of the infrastructure.

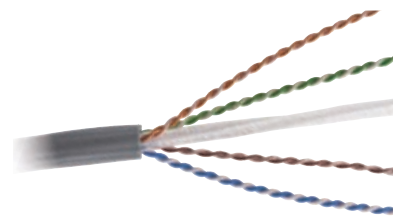
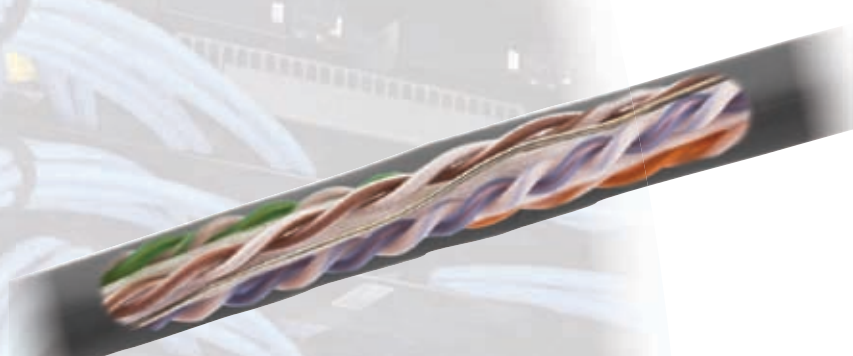




# CABLE

PRODUCT	PAGE
NEXTSPEED® ASCENT CATEGORY 6A UTP CABLE.....	F3
NEXTSPEED® ASCENT CATEGORY 6A FTP CABLE .....	F4
NEXTSPEED® CATEGORY 6 ENHANCED UTP CABLE .....	F5
NEXTSPEED® CATEGORY 6 UTP CABLE.....	F5
NEXTSPEED® LINK 6 UTP CABLE .....	F5
SPEEDGAIN® CATEGORY 5E UTP CABLE.....	F6
CATEGORY 5E UTP CABLE .....	F6





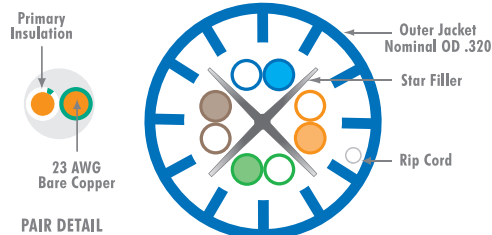
### Flexibility

Unique spline construction provides ease of termination – installation.

### Performance

Patented cable design suppresses ANEXT delivering full 10GBase-T error free transmission.

### CABLE CONSTRUCTION



## HUBBELL Advantage

- Third Party Verified TIA Category 6A Component Compliant
- Round Cable Construction Provides Easy Routing, Pulling and Cable Managing
- 10 Gigabit Ethernet Assurance
- Recycled Material Used on All Cartons

### Specifications



- Application: third party qualified for 10 Gigabit Ethernet transmission IEEE 802.3an
- Current capacity: qualified for PoE+ IEEE 802.3at
- NVP: plenum: 71%; riser: 68%

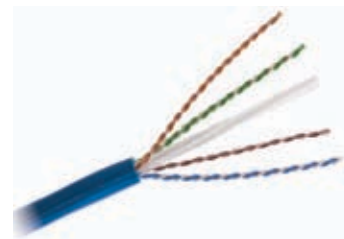
### Standards/Listings/Verifications

- UL Verified TIA-568-C.2 Category 6A cable
- ISO 11801 Class E<sub>A</sub> Category 6A cable
- UL Listed

### NEXTSPEED® Ascent Category 6A, UTP Cable, 4-Pair

Color	Plenum Spool	Riser Spool
Blue	<b>C6ASPB</b>	<b>C6ASRB</b>
Gray	<b>C6ASPGY</b>	<b>C6ASRGY</b>
White	<b>C6ASPW</b>	<b>C6ASRW</b>
Yellow	<b>C6ASPY</b>	<b>C6ASRY</b>

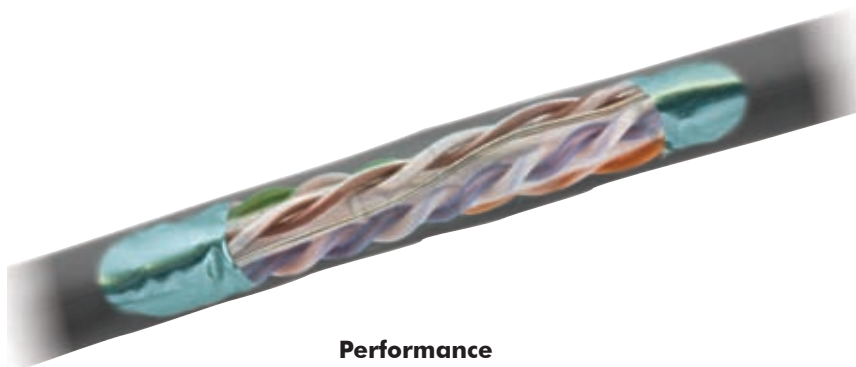
Note: All category rated cable is packaged in 1000 foot quantities.



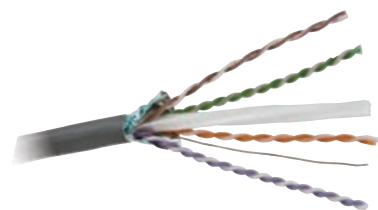
C6ASPB



# CATEGORY 6A FTP CABLE

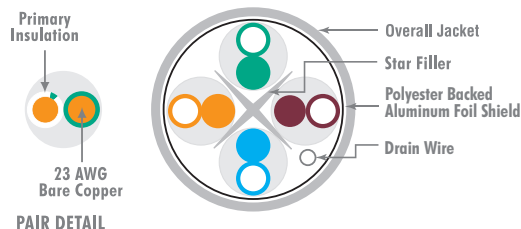


**Performance**  
Patented cable design suppresses ANEXT delivering full 10GBase-T error free transmission.



**Flexibility**  
Small OD construction provides increased capacity in cabling runways.

### CABLE CONSTRUCTION



- Third Party Verified TIA Category 6A Component Compliant
- .290 OD Allows Increased Pathway Capacity Designed for Critical, Bandwidth Intensive 10GBASE-T Applications
- 10 Gigabit Ethernet Assurance
- Recycled Material Used on All Cartons

### Specifications



- Application: third party qualified for 10 Gigabit Ethernet transmission IEEE 802.3an
- Current capacity: qualified for PoE and PoE+ IEEE 802.3at
- NVP: plenum: 70%; riser: 68%

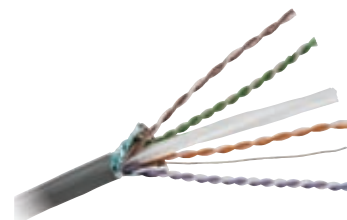
### Standards/Listings/Verifications

- UL Verified TIA-568-C.2 Category 6A cable
- ISO 11801 Class E<sub>A</sub> Category 6A cable
- UL Listed

### NEXTSPEED® Ascent Category 6A, FTP Cable, 4-Pair

Color	Plenum Spool	Riser Spool
Blue	<b>C6AFTPSPB</b>	<b>C6AFTP SRB</b>
Gray	<b>C6AFTPSPGY</b>	<b>C6AFTP SRGY</b>
White	<b>C6AFTPSPW</b>	<b>C6AFTP SRW</b>
Yellow	<b>C6AFTPSPY</b>	<b>C6AFTP SRY</b>

Note: All category rated cable is packaged in 1000 foot quantities.



C6AFTPGY





**HUBBELL**  
**Advantage**

- Third Party Verified TIA Category 6 Cable
- Reverse Sequential Numbering
- PoE Assurance
- Recycled Material Used on All Cartons



**Standards/Listings/Verifications**



- UL Verified 568-C.2 Category 6 compliant
- ISO 11801 Class E Category 6
- UL Listed

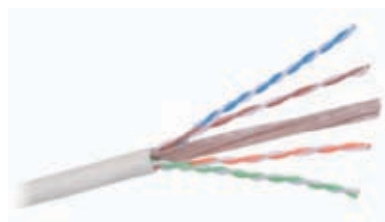
**NEXTSPEED® Category 6 Enhanced UTP Cable, 4-Pair**

**Features/Benefits**

- Sweep tested to 750MHz
- Headroom over TIA and ISO Category 6 requirements to 500MHz
- Backward compatible to Category 5e, 5, and 3
- .235 OD provides easy cable routing for TSB-155 applications

**Specifications**

- Conductor: 23 AWG solid bare copper
- Insulation: CMP: FEP, CMR: Polyolefin
- Jacket:
  - CMP: Low-Smoke PVC
  - CMR: PVC
- NVP: Plenum: 70%; Riser: 68%



C6ESPW

Description	Plenum Spool	Riser Spool
Catalog No.	<b>C6ESPxx</b>	<b>C6ESRxx</b>

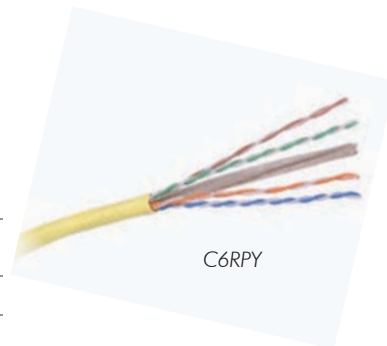
**NEXTSPEED® Category 6 UTP Cable, 4-Pair**

**Features/Benefits**

- Sweep tested to 550MHz
- Headroom over TIA and ISO Category 6 requirements
- Backward compatible to Category 5e, 5, and 3
- .220 OD designed for efficient cable routing and bundling

**Specifications**

- Conductor: 23 AWG solid bare copper
- Insulation: CMP: FEP, CMR: polyolefin
- Jacket:
  - CMP: low-smoke PVC
  - CMR: PVC
- NVP: plenum: 70%; riser: 68%



C6RPY

Description	REELEX® Plenum Box	REELEX® Riser Box
Catalog No.	<b>C6RPxx</b>	<b>C6RRxx</b>

**NEXTSPEED® Link 6 UTP Cable**

**Features/Benefits**

- Sweep tested to 450MHz
- Category 6 Component compliant
- Backward compatible to Category 5e, 5, and 3
- .220 OD designed without cable spline for easy termination

**Specifications**

- Conductor: 23 AWG solid bare copper
- Insulation: plenum: FEP; riser: HDPE
- Jacket: plenum: FRPVC; riser: PVC
- NVP: plenum: 70%; riser: 68%



C6RPEB

Description	REELEX® Plenum Box	REELEX® Riser Box
Catalog No.	<b>C6RPExx</b>	<b>C6RRExx</b>

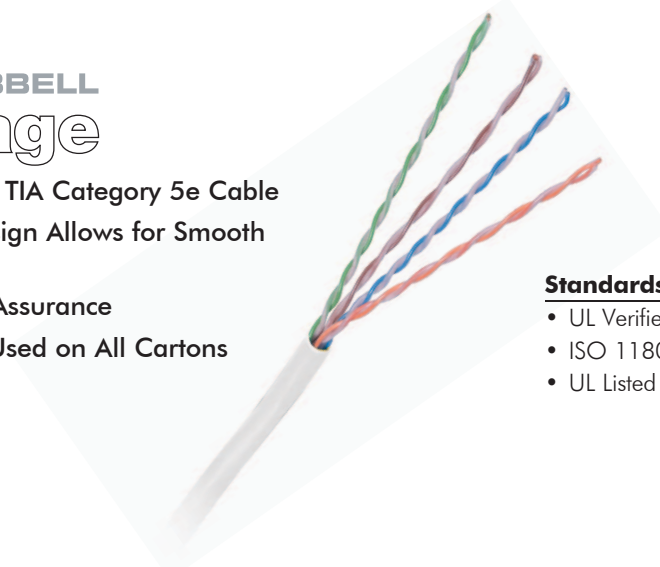
**xx** = Color: **B** (Blue), **GY** (Gray), **W** (White), and **Y** (Yellow).  
 Note: All category rated cable is packaged in 1000 foot quantities.  
 REELEX® is licensed and patented by Windings Inc.



# CATEGORY 5E UTP CABLE



- Third Party Verified TIA Category 5e Cable
- Unique Carton Design Allows for Smooth Cable Payout
- Active Application Assurance
- Recycled Material Used on All Cartons



### Standards/Listings/Verifications



- UL Verified TIA 568-C.2 Category 5e
- ISO 11801 Class D Category 5e
- UL Listed

## SPEEDGAIN® Category 5e UTP Cable, 4-Pair

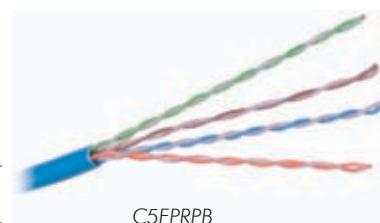
### Features/Benefits

- Sweep tested to 400MHz
- Headroom over TIA and ISO Category 5e requirements
- Reverse sequential footage marking
- Backward compatible to Category 5 and 3

### Specifications

- Conductor: 24 AWG solid bare copper
- Insulation: CMP: FEP, CMR: polyolefin
- Cable OD: .180
- Jacket:
  - CMP: low-smoke PVC
  - CMR: PVC
- NVP: plenum: 70%; riser: 68%

Description	REELEX® Plenum Box	REELEX® Riser Box
Catalog No.	<b>C5ERPxx</b>	<b>C5ERRxx</b>



C5ERPxx

## Category 5e UTP Cable, 4-Pair

### Features/Benefits

- Sweep tested to 350MHz
- Headroom over TIA and ISO Category 5e requirements
- Reverse sequential footage marking
- Backward compatible to Category 5 and 3

### Specifications

- Conductor: 24 AWG solid bare copper
- Insulation: CMP: FEP, CMR: polyolefin
- Cable OD: .180
- Jacket:
  - CMP: low-smoke PVC
  - CMR: PVC
- NVP: plenum: 70%; riser: 68%

Description	REELEX® Plenum Box	REELEX® Riser Box
Catalog No.	<b>C5ERPxx</b>	<b>C5ERRxx</b>



C5ERPxx

**xx** = Color: **B** (Blue), **GY** (Gray), **W** (White), and **Y** (Yellow).  
 Note: All category rated cable is packaged in 1000 foot quantities.  
 REELEX® is licensed and patented by Windings Inc.

