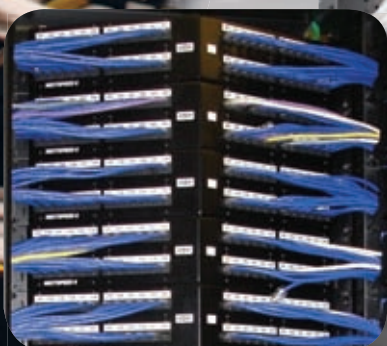




COPPER

CROSS CONNECT

Hubbell's cross connect products lead the industry in product innovation, efficiency and component performance. Hubbell's patch panels and blocks are designed to exceed current industry standards and provide a foundation for future applications.





CROSS CONNECT

PRODUCT	PAGE
NEXTSPEED® ASCENT PATCH PANELS, CATEGORY 6A COMPONENT . . .	E3
NEXTSPEED® PATCH PANELS, CATEGORY 6 COMPONENT.	E5
SPEEDGAIN® PATCH PANELS, CATEGORY 5E COMPONENT.	E7
HUBBELL iSTATION MULTIMEDIA AND KEYSTONE PATCH PANELS	E9
SPEEDGAIN® GIGABIT ETHERNET PANELS	E11
SPECIALTY PATCH PANELS.	E12
CONNECTING BLOCK SYSTEM, CAT 6	E13
CONNECTING BLOCK SYSTEM, CAT 5E.	E15
BLOCK RACK MOUNT KITS, CAT 6/CAT 5E.	E17
BLOCK WALL MOUNT KITS, CAT 6/CAT 5E.	E18
66 BLOCK.	E19



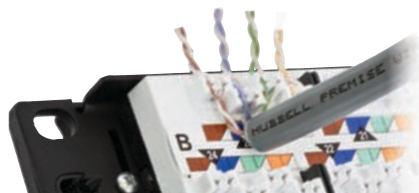
Termination

Stuffer caps lock in place, securing conductors in IDCs after termination.



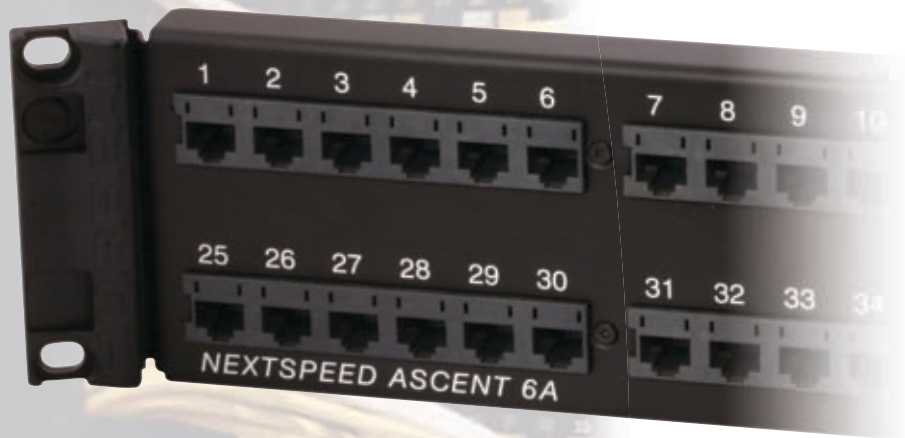
Capacity

Ideal for high density applications for easy patch cord routing.



IDC Lacing

IDC towers have an inner blade to assist in pair separation without performance disruption.



Performance

Zero-crosstalk contact structure provides the highest performance while maintaining true balance.

HUBBELL Advantage

- Industry's Fastest Terminating Category 6A Patch Panel
- Angled Panel Eliminates the Need for Horizontal Cable Management
- 10GbE Application Assurance
- Universal Wiring Reduces Extra Parts on the Job Site

Specifications

- 4.5dB min NEXT margin over TIA 568-C.2 component at 500MHz
- 1.5dB min NEXT margin over ISO 11801 6A component requirements at 500MHz
- Supports permanent links: 2–90 meters
- Enhanced common mode design eliminates residual and reflected NEXT and ANEXT
- Designed and tested for 850mA of continuous current per conductor (1.7A per pair)

Standards/Listings/Verifications

- TIA-568-C.2 Category 6A component
- ISO 11801 Class E_A Category 6A component





NEXTSPEED® Ascent Category 6A Patch Panels

Ports	Height Inches (mm)	Width Inches (mm)	Rack Units	Color	Catalog No.
24	1.75" (45)	19" (483)	1	Black	HP6A24U
48	3.50" (89)	19" (483)	2	Black	HP6A48U
96	7.00" (178)	19" (483)	4	Black	HP6A96U
24	1.75" (45)	19" (483)	1	Silver	HP6A24US
48	3.50" (89)	19" (483)	2	Silver	HP6A48US
96	7.00" (178)	19" (483)	4	Silver	HP6A96US



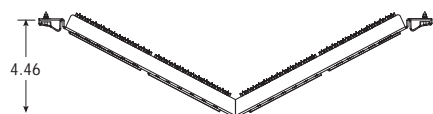
HP6A24U



HP6A48U



HP6A48AU



NEXTSPEED® Ascent Category 6A Angled Patch Panels

Ports	Height Inches (mm)	Width Inches (mm)	Rack Units	Color	Catalog No.
24	1.75" (45)	19" (483)	1	Black	HP6A24AU
48	3.50" (89)	19" (483)	2	Black	HP6A48AU

Note: HP6Axx angled panel protrudes 4.46" from the plane of the rack. Hubbell recommends one (1) extra inch of space between the door and panel angle.

MUTOA, Category 6A

Description	Catalog No.
12-port, Category 6A, MUTOA, universal, 89D	HP6A12U



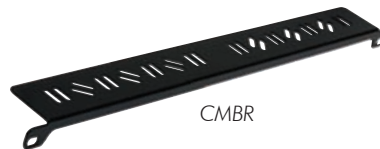
HC6A12U

1-Punch Termination Tool

Description	Catalog No.
Patch panel tool with head and blades	TX4PP
Patch panel tool replacement head (includes blades)	TX4PPH
Patch panel tool replacement blades	TX4PPBL



TX4PP



CMBR



PCMBR4

Rear Cable Management Bars

Description	Type	Catalog No.
Cable management bar and screws	19" Rack Mount	CMBR
Cable management bar, 4" bracket and screws	HPW Panel Mount	PCMBR4
Cable management bar, 6" bracket and screws	HPW Panel Mount	PCMBR6
Cable management bar, straight, with screws	19" Rack Mount	ECMBRS
Cable management bar, 3" with screws	19" Rack Mount	ECMBR3
Cable management bar, 6" with screws	19" Rack Mount	ECMBR6



Performance

Balanced PCB design delivers significant headroom over the TIA Category 6 standard up to 400MHz providing true application assurance.

Durability

Rolled edge construction eliminates flex during termination.



Installation Ease

Third hand location pin provides a hands free installation. Simplifies rack layout.



IDC Lacing

IDC towers have an inner blade to assist in pair splitting without performance disruption.

HUBBELL Advantage

- Industry's Fastest Terminating Category 6 Patch Panel
- Angled Panel Eliminates the Need for Horizontal Cable Management
- Third Party Tested and Verified
- Universal Wiring Reduces Extra Parts on the Job Site

Specifications

- Component: third party verified for TIA-568-C.2 Category 6
- Current capacity: qualified for PoE+ IEEE 802.3at
- Manufacturing: 100% factory tested

Standards/Listings/Verifications

- TIA-568-C.2 Category 6 component
- ISO 11801 Class E Category 6 component





NEXTSPEED® Category 6 Patch Panels

Ports	Height Inches (mm)	Width Inches (mm)	Rack Units	Color	Catalog No.
24	1.75" (45)	19" (483)	1	Black	P6E24U
48	3.50" (89)	19" (483)	2	Black	P6E48U
96	7.00" (178)	19" (483)	4	Black	P6E96U
24	1.75" (45)	19" (483)	1	White	P6E24UW
48	3.50" (89)	19" (483)	2	White	P6E48UW
96	7.00" (178)	19" (483)	4	White	P6E96UW



P6E48U Front



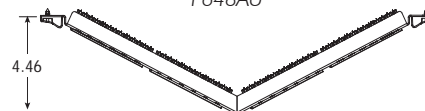
P6E48U Rear



P624AU



P648AU



NEXTSPEED® Category 6 Angled Patch Panels

Ports	Height Inches (mm)	Width Inches (mm)	Rack Units	Color	Catalog No.
24	1.75" (45)	19" (483)	1	Black	P624AU
48	3.50" (89)	19" (483)	2	Black	P648AU

Note: HP6Axx angled panel protrudes 4.46" from the plane of the rack. Hubbell recommends one (1) extra inch of space between the door and panel angle.

MUTOA, Category 6 Component

Description	Catalog No.
12-port, Category 6, MUTOA, universal, 89D	P612U



P612U

1-Punch Termination Tool

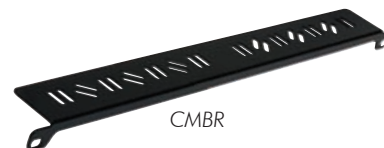
Description	Catalog No.
Patch panel tool with head and blades	TX4PP
Patch panel tool replacement head (includes blades)	TX4PPH
Patch panel tool replacement blades	TX4PPBL



TX4PP

Rear Cable Management Bars

Description	Type	Catalog No.
Cable management bar and screws	19" Rack Mount	CMBR
Cable management bar, 4" bracket and screws	HPW Panel Mount	PCMBR4
Cable management bar, 6" bracket and screws	HPW Panel Mount	PCMBR6
Cable management bar, straight, with screws	19" Rack Mount	ECMBRS
Cable management bar, 3" with screws	19" Rack Mount	ECMBR3
Cable management bar, 6" with screws	19" Rack Mount	ECMBR6



CMBR



PCMBR4



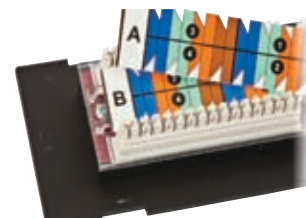
HUBBELL
SPEEDGAIN™

CATEGORY 5E COMPONENT



Durability

Rolled edge construction eliminates flex during termination.



Installation Ease

Universal wiring panels can be terminated using T568B or T568A wiring formats.



Administration

Accepts Hubbell laser printable label sheets and industry recognized 0.5 inch hand held printer tape.

Performance

Balanced PCB design delivers significant headroom over the TIA Category 5e standard up to 200MHz providing true application assurance.

HUBBELL
Advantage

- Industry's Fastest Terminating Category 5e Patch Panel
- In-Line IDC Termination
- Third Party Tested
- Universal Wiring Reduces Extra Parts on the Job Site

Specifications

- Application: third party qualified for Gigabit Ethernet Transmission IEEE 802.3
- Manufacturing: 100% factory tested

Standards/Listings/Verifications

- TIA-568-C.2 Category 5e component
- ISO 11801 Class D Category 5e component




SPEEDGAIN® Category 5e Patch Panels

Ports	Height Inches (mm)	Width Inches (mm)	Rack Units	Color	Catalog No.
24	1.75" (45)	19" (483)	1	Black	P5E24U
48	3.50" (89)	19" (483)	2	Black	P5E48U
96	7.00" (178)	19" (483)	4	Black	P5E96U
24	1.75" (45)	19" (483)	1	White	P5E24UW
48	3.50" (89)	19" (483)	2	White	P5E48UW
96	7.00" (178)	19" (483)	4	White	P5E96UW



P5E24UE

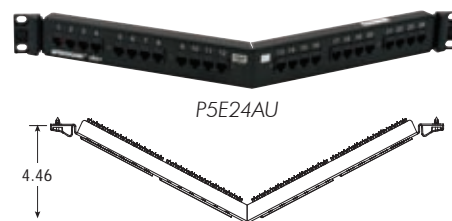


P5E48UE

SPEEDGAIN® Category 5e Angled Patch Panels

Ports	Height Inches (mm)	Width Inches (mm)	Rack Units	Color	Catalog No.
24	1.75" (45)	19" (483)	1	Black	P5E24AU
48	3.50" (89)	19" (483)	2	Black	P5E48AU

Note: HP6Axx angled panel protrudes 4.46" from the plane of the rack. Hubbell recommends one (1) extra inch of space between the door and panel angle.


MUTOA, Category 5e Component

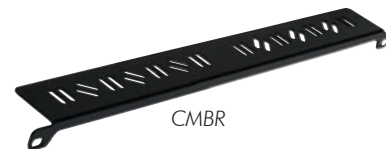
Description	Catalog No.
12-port, Category 5e, MUTOA, universal, 89D	P5E12U



P5E12U

Rear Cable Management Bars

Description	Type	Catalog No.
Cable management bar and screws	19" Rack Mount	CMBR
Cable management bar, 4" bracket and screws	HPW Panel Mount	PCMBR4
Cable management bar, 6" bracket and screws	HPW Panel Mount	PCMBR6
Cable management bar, straight, with screws	19" Rack Mount	ECMBRS
Cable management bar, 3" with screws	19" Rack Mount	ECMBR3
Cable management bar, 6" with screws	19" Rack Mount	ECMBR6



CMBR



PCMBR4



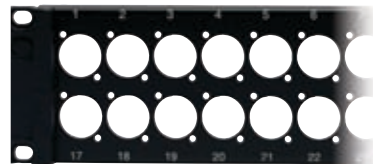
Durability

Rolled edge construction eliminates flex during termination.



Keystone Design

Rear-loading Hubbell keystone feature simplifies installation, allowing for MACs and provides migration path.



Hubbell Pro Audio Design

Allows for Pro Audio style connections to be placed into a patch panel for easy access in racks and cabinets.

Capacity

Ideal solution where rack space is at an absolute premium, add-as-you-go flexibility, mixed jack performance, and color-coding are desired.

HUBBELL Advantage

- 1U High-Density 48-Port Panel Maximizes Rack Space
- Angle Panel Design Eliminates the Need for Cable Management
- Panel Allows for Endless Audio Video and Data Applications
- All Steel Construction

Features

- High density form factor saves space in the datacenter
- Fits all Hubbell HXJ and HJ jacks
- Opens up rack real-estate
- Color coding: jacks are available in 14 different color offerings for distinctive color-coding

Specifications

- Panel material: 2-piece welded construction
- Durable, black powder coat finish

Standards/Listings/Verifications

- Complies with TIA-310-D rack mount standard
- UL Listed 1863



UDX Super, High-Density Panel

Ports	Height Inches (mm)	Width Inches (mm)	Rack Units	Type	Color	Catalog No.
48	1.75" (mm)	19" (483)	1	Flat	Black	UDX48E1U
48	1.75" (mm)	19" (483)	1	Angled	Black	UDX48A1U

Note: Only accepts HXJ/HJ6A jacks.

UDX Multimedia Jack Panels, Unloaded

Ports	Height Inches (mm)	Width Inches (mm)	Rack Units	Type	Color	Catalog No.
12	-	-	-	89D	Black	UDX1289*
24	1.75" (45)	19" (483)	1	Flat	Black	UDX24E
36	1.75" (45)	19" (483)	1	Flat	Black	UDX36E
48	3.50" (89)	19" (483)	2	Flat	Black	UDX48E
24	1.75" (45)	19" (483)	1	Angled	Black	UDXA24
48	3.50" (89)	19" (483)	2	Angled	Black	UDXA48

Note: *Pre-mounted on an 89D bracket.

Hubbell iSTATION Patch Panels, Front-Loading, Unloaded

Opening Size	Height Inches (mm)	Width Inches (mm)	No. of Total Units	Type	Catalog No.
1 Unit	1.75" (45)	19" (483)	8-1 Unit Modules	Flat	UDXIS1U**
3 Units	3.50" (89)	19" (483)	24-1 Unit Modules	Flat	UDXIS2U
1 Unit	1.75" (45)	19" (483)	8-1 Unit Modules	Angled	UDXAM16**
3 Units	3.50" (89)	19" (483)	24-1 Unit Modules	Angled	UDXAM48

Note: **Use only Hubbell iSTATION 1U modules. See section C for a complete listing of Hubbell iSTATION modules.

Pro-AV Panel Mount Patch Panels, Unloaded

Opening Size	Height Inches (mm)	Width Inches (mm)	No. of Connectors	Type	Catalog No.
Pro-AV	1U (1.75")	19" (483)	16	Flat	PAV16
Pro-AV	2U (3.50")	19" (483)	32	Flat	PAV32
Pro-AV	1U (1.75")	19" (483)	16	Angled	PAVA16
Pro-AV	2U (3.50")	19" (483)	32	Angled	PAVA32

Note: See page C11 for Pro-AV panel mount (XLR type) connector information.

Angled Blank Panels and Cover

Ports	Height Inches (mm)	Width Inches (mm)	Rack Units	Type	Color	Catalog No.
Blank	1.75" (45)	19" (483)	1	Angled	Black	ABP175
Blank	3.50" (89)	19" (483)	2	Angled	Black	ABP350
-	-	-	-	Cover	Black	APC

6 Shielded Patch Panels, Unloaded

Ports	Height Inches (mm)	Width Inches (mm)	Rack Units	Type	Color	Catalog No.
24	1.75" (45)	19" (483)	1	Flat	Black	PSJ24BK
24	1.75" (45)	19" (483)	1	Flat	Silver	PSJ24S

Note: Order jacks separately, see page B4 for a complete listing.

Rear Cable Management Bars

Description	Type	Catalog No.
Cable management bar and screws	19" Rack Mount	CMBR
Cable management bar, 4" bracket and screws	HPW Panel Mount	PCMBR4
Cable management bar, 6" bracket and screws	HPW Panel Mount	PCMBR6



UDX48A1U



UDX24E



UDXA24



UDXIS1U



UDXAM48



PAV16



PAV32



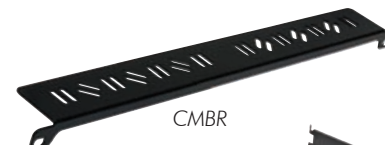
ABP350



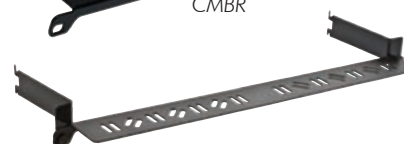
APC



PSJ24S



CMBR



PCMBR4



HUBBELL
SPEEDGAIN

100/1000 BASE-T ETHERNET PANELS



Capacity

25-pair cable much smaller profile than equivalent 6-cable bundle of 4-pair UTP.



Installation

"Plug-n-Play" connection within the datacenter easily interfacing between switches (RJ21X) or standard patch panels (RJ45).

HUBBELL
Advantage

- The Industry's Only 25-Pair Gigabit Ethernet Panel
- 6-Port Installation Using 25-Pair Cable Assemblies
- Third Party Tested
- 25-Pair Assemblies Remove Cable Congestion, Improving Air Flow

Specifications

- Application: third party qualified for Gigabit Ethernet Transmission IEEE 802.3
- Performance: TIA-568-C.2 Category 5e component
- Manufacturing: 100% factory tested
- Design: Gigabit Ethernet transmission, 100MHz



Gigabit Ethernet 1000BASE-T Patch Panels

Unit of Measure: 1 1000BASE-T patch panel, 4 mounting screws, 4 cable assembly screws.

Ports	Height Inches (mm)	Width Inches (mm)	Depth	Connectors	Color	Catalog No.
24	1.75" (45)	19" (483)	1.2" (31)	Female	Black	PG24
48	3.50" (89)	19" (483)	1.2" (31)	Female	Black	PG48



PG48

Fast Ethernet 100BASE-T Patch Panels (Female 50-pin)

Unit of Measure: 1 100BASE-T patch panel, 4 mounting screws, 4 cable assembly screws.

Ports	Height Inches (mm)	Width Inches (mm)	Depth	Connectors	Color	Catalog No.
24	1.75" (45)	19" (483)	1.2" (31)	Female	Black	MCC24100BT19
48	3.50" (89)	19" (483)	1.2" (31)	Female	Black	MCC48100BT19

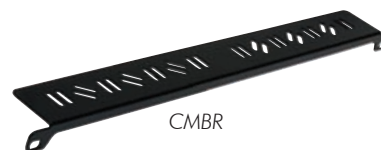


MCC48100BT19

Note: See page D10 for cable assemblies.

Rear Cable Management Bars

Description	Type	Catalog No.
Cable management bar and screws	19" Rack Mount	CMBR
Cable management bar, straight, with screws	19" Rack Mount	ECMBRS
Cable management bar, 3" with screws	19" Rack Mount	ECMBR3
Cable management bar, 6" with screws	19" Rack Mount	ECMBR6



CMBR




-  Patented Hinge Design (U.S. Patent No. 5,765,698)
-  The Cable Management Panel Acts as a Bench Support During Termination
-  Third Party Tested and Verified Category 5e
-  RoHS Compliant



Installation

The cable management panel acts as a bench support during termination.



Cable Management

Integrated management provides an orderly, aesthetic, easy solution.

Specifications

- Application: third party qualified for Gigabit Ethernet Transmission IEEE 802.3
- Component: third party qualified for Cat. 5e and 6
- Channel: third party verified for ISO 11801 Class D/E compliant



Patch Panels, Front Access, Category 5e

Ports	Height Inches (mm)	Width Inches (mm)	Depth Inches (mm)	Wiring	Catalog No.
12	2.5" (64)	10" (254)	1.5" (38)	T568B	P5E12BF
12	2.5" (64)	10" (254)	1.5" (38)	T568A	P5E12AF
24	3.5" (89)	19" (483)	1.5" (38)	T568B	P5E24BF



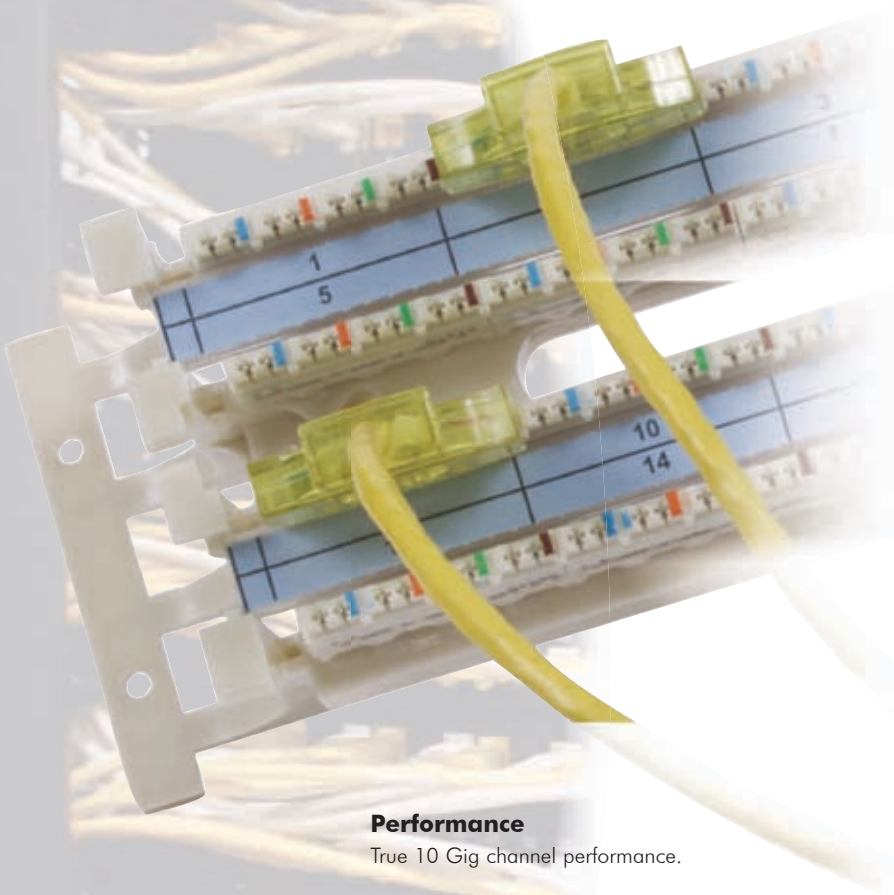
P5E24BF

Patch Panels, Hinged, Fold-Down, Category 6A, 6, and 5e

Ports	Height Inches (mm)	Width Inches (mm)	Depth Inches (mm)	Type	Category	Catalog No.
48	7.0" (177)	19" (483)	7.5" (191)	Wall	6A	P6A48UF
48	7.0" (177)	19" (483)	1.5" (38)	Rack	6A	P6A48UF19
48	7.0" (177)	19" (483)	7.5" (191)	Wall	6	P648UF
48	7.0" (177)	19" (483)	1.5" (38)	Rack	6	P648UF19
48	7.0" (177)	19" (483)	7.5" (191)	Wall	5e	P5E48UF
48	7.0" (177)	19" (483)	1.5" (38)	Rack	5e	P5E48UF19



P5E48UF



Performance

True 10 Gig channel performance.



Installation Ease

Category 6 field terminated patch plugs allow custom length patch cords to be assembled in the field by utilizing a labor saving snap fit design.



Termination

Termination tool designed to seat and terminate all four pairs at once.



IDC Lacing

Cable access openings allow cables to be routed through the rear of the block directly to the point of termination.

HUBBELL Advantage

- TIA-568-C.2 Category 6 Component
- Increased Channel Width Allows Cable to Maintain Proper Pair Twist
- 10GbE Channel Performance
- RoHS Compliant

Specifications

- TIA-568-C.2 Category 6 component
- Conductor size: solid or stranded 26-22 AWG
- cUL and UL Listed



Field Termination Kits, 6-110

Description	Catalog No.
6-110/64-pair field termination kit with standoff legs	6110FTK64WL
6-110/64-pair field termination kit without standoff legs	6110FTK64NL
6-110/192-pair field termination kit with standoff legs	6110FTK192WL



6110FTK64WL

Features/Benefits

- Cut designation on tool head aids proper orientation before termination.
- Ergonomic rubber handle for ease of use.
- Head and blades remove easily for fast replacement.

Termination Tool, 6-110/4-pair

Description	Catalog No.
Termination tool, 4-pair, 6-110 (includes head and blades)	6110MPPDT
Replacement tool head, 6-110 (includes blades)	6110MPPDT1

Note: 6110 tool is not compatible with 1-punch termination tool.



6110MPPDT



6110MPPDT1

Field Terminated Patch Plugs

Unit of Measure: 1 patch plug base, 1 patch plug cover, 1 cable tie

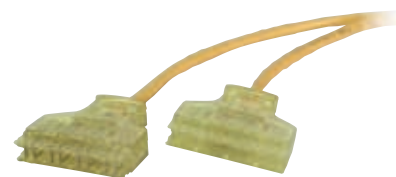
Description	Catalog No.
Category 6, 6-110, 4-pair, yellow	6110FPP4PR



6110FPP4PR

Factory Terminated Patch Cords

Length	Color	6-110 to 6-110	6-110 to RJ45 (T568B)
3'	Yellow	6110PCL3	6119PCL3
5'	Yellow	6110PCL5	6119PCL5
7'	Yellow	6110PCL7	6119PCL7
9'	Yellow	6110PCL9	6119PCL9
12'	Yellow	6110PCL12	6119PCL12



6110PCL3

Connecting Blocks, 6-110/4-pair

Description	Catalog No.
Connecting blocks, 6-110/4-pair	6110CB4PR10



6110CB4PR10

Hubbell Labeling Solutions, Cross Connect, 6-110/110

The Hubbell labeling solution 110 laser-printable label sheets and covers can be mounted between each wiring channel to identify individual station ports or pair counts. See page U7 for more information.

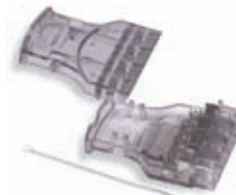
Description	Catalog No.
Laser-printable label sheets, 6-110 /110, white	XPL11010W
Laser-printable label sheets, 6-110 /110, yellow	XPL11010Y
Laser-printable label sheets, 6-110 /110, blue	XPL11010B





HUBBELL
SPEEDGAIN

110 CONNECTING BLOCK SYSTEM



Installation Ease

Category 5e field terminated patch plugs allow custom length patch cords to be assembled in the field by utilizing a labor saving snap fit design.



Termination

1-punch termination tool designed to seat and terminate all four pairs at once.







IDC Lacing

High definition color coding and tip and ring designation make conductor placement and termination simple.

Performance

True Category 5e gigabit performance.

HUBBELL **Advantage**

-  Category 5e Component Verified
-  Access Openings Allow Cables to be Routed Directly to Point of Termination
-  Gigabit Ethernet Assurance
-  RoHS Compliant

Specifications

- TIA-568-C.2 Category 5e component
- Conductor size: solid or stranded 26-22 AWG
- cUL and UL Listed



Wiring Blocks, 110

Description	Catalog No.
Wiring block, 110/50-pair with standoff legs	110BLK50BWL
Wiring block, 110/50-pair without standoff legs	110BLK50BNL
Wiring block, 110/100-pair with standoff legs	110BLK100BWL
Wiring block, 110/100-pair without standoff legs	110BLK100BNL
Wiring block, 110/300-pair with standoff legs	110BLK300BWL
Wiring block, 110/300-pair without standoff legs	110BLK300BNL

Field Termination Kits, 110

Description	Catalog No.
Field termination kit, 110/50-pair with 4-pair blocks	110BLK50FTK4
Field termination kit, 110/50-pair with 5-pair blocks	110BLK50FTK5
Field termination kit, 110/100-pair with 4-pair blocks	110BLK100FTK4
Field termination kit, 110/100-pair with 5-pair blocks	110BLK100FTK5
Field termination kit, 110/300-pair with 4-pair blocks	110BLK300FTK4
Field termination kit, 110/300-pair with 5-pair blocks	110BLK300FTK5

Termination Tool, 110/5-pair

110/5-pair tool is designed to seat 110 connecting blocks and terminate and cut UTP cable on 110 wiring blocks.

Description	Catalog No.
Termination tool, 110/5-pair (includes head and blades)	T5PPD110
Replacement tool head, 110/5-pair (includes blades)	T5PPD110H
Replacement tool blades, 110/5-pair	T5PPD110B

Field Terminated Patch Plugs

Unit of measure: 1 patch plug base, 1 patch plug cover, 1 cable tie

Description	Catalog No.
Category 5e, 110, 4-pair, gray	110FPP4PR

Factory Terminated Patch Cords

Length	Color	110 to 110	110 to RJ45 (T568B)
3'	Yellow	PC110C5EL3	PC119C5EL3
5'	Yellow	PC110C5EL5	PC119C5EL5
7'	Yellow	PC110C5EL7	PC119C5EL7
9'	Yellow	PC110C5EL9	PC119C5EL9
12'	Yellow	PC110C5EL12	PC119C5EL12

Connecting Blocks, 110

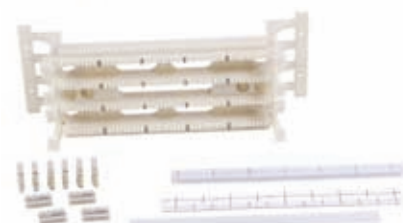
110 connecting blocks are terminated to the 110 wiring blocks using the 110/5-pair termination tool. Available in 4- and 5-pair sizes.

Description	Catalog No.
Connecting blocks, 110/4-pair (kit of 10)	110CB4PR10
Connecting blocks, 110/5-pair (kit of 10)	110CB5PR10

Hubbell Labeling Solutions, Cross Connect, 6-110/110

The Hubbell Labeling Solution 110 laser-printable label sheets/covers can be mounted between each wiring channel to identify individual station ports or pair counts. See page U7 for more information.

Description	Catalog No.
Laser-printable label sheets, 6-110 /110, white	XPL11010W
Laser-printable label sheets, 6-110 /110, yellow	XPL11010Y
Laser-printable label sheets, 6-110 /110, blue	XPL11010B

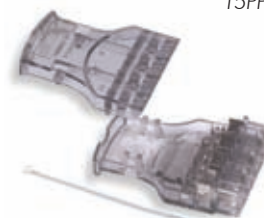


110BLK100FTK4



T5PPD110

T5PPD110H



110FPP4PR

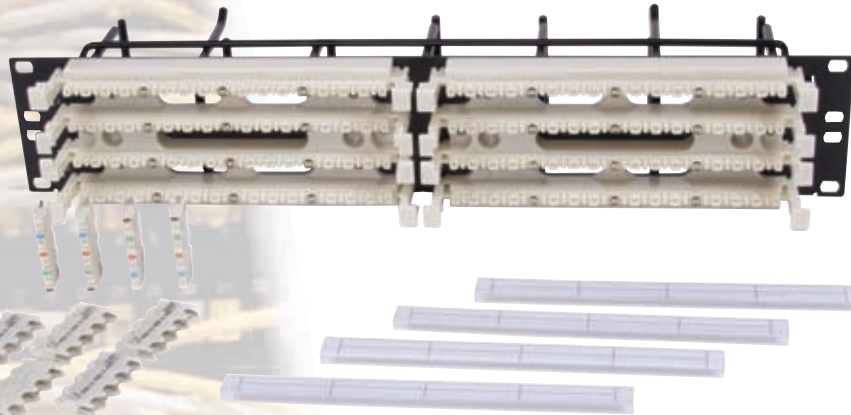


PC110C5EL3



110CB4PR10





HUBBELL Advantage

- TIA-568-C.2 Category Rated 5e/6 Compliant
- Unique Third Hand Locating Pins Hold Panel in Place on Rack while Installing Screws
- 1 and 10 Gigabit Compliant
- RoHS Compliant

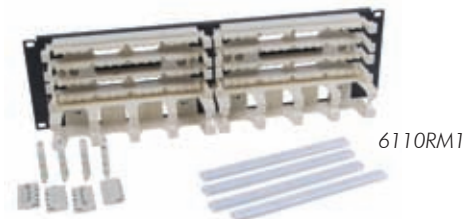
Specifications

- 110 wiring bases and blocks are made of fire-retardant plastic rated UL 94-V0
- Panel material: 14ga steel
- Finish: durable black powder coat
- TIA-310-E



Rack Mount Kits, 6-110, Category 6

Description	Rack Units	Catalog No.
Rack mount kit with troughs, 6-110, 128-pair	3U	6110RM1
Rack mount kit without troughs, 6-110, 128-pair	2U	6110RM1NT



6110RM1

Rack Mount Kits, 110, with Cable Management, Category 5e

Description	Rack Units	Catalog No.
Rack mount kit, 100-pair with 4-pair connecting blocks	2U	110RM14
Rack mount kit, 100-pair with 5-pair connecting blocks	2U	110RM15
Rack mount kit, 200-pair with 4-pair connecting blocks	3U	110RM24
Rack mount kit, 200-pair with 5-pair connecting blocks	3U	110RM25



110RM14

Rack Mount Kits, 110, without Cable Management, Category 5e

Description	Rack Units	Catalog No.
Rack mount kit, 100-pair with 4-pair connecting blocks	1U	110RM14NT
Rack mount kit, 100-pair with 5-pair connecting blocks	1U	110RM15NT
Rack mount kit, 200-pair with 4-pair connecting blocks	2U	110RM24NT
Rack mount kit, 200-pair with 5-pair connecting blocks	2U	110RM25NT



110RM14NT



- TIA Category 5e/6 Compliant
- Wall Mount Kits are Supplied Fully Assembled with Wiring Blocks
- IEEE 802.3 Compliant
- RoHS Compliant



Specifications



- Material: 110 wiring bases and blocks are made of fire-retardant plastic rated UL 94-V0
- Tower material: rugged 16ga steel
Finish: durable black powder coat

Wall Mount Kits, 6-110/110

Unit of Measure:	6-110	110	Description	Catalog No.
	1	1	Wall mount tower frame	
	1	1	Bottom cable trough	
	3	-	6-110/64-pair wiring blocks without legs	
	-	3	100-pair wiring blocks without legs	
	48	-	6-110/4-pair connecting blocks	
	-	60	110/4-pair connecting blocks	
	-	12	110/5-pair connecting blocks	
	3	3	Cable management troughs without legs	
	6	6	Clear label holders	
	6	6	White paper designation strips	
Description				Catalog No.
Wall mount kit, Category 6, 6-110/192-pair				6110WMK
Wall mount kit, Category 5e, 110/300-pair				110WMK



6110WMK

Cable Management Backboard

Unit of Measure:	Quantity	Description	Catalog No.
	1	Wall mount cable management tower	
	1	Bottom cable trough	
	3	Cable management rings	
Description			Catalog No.
Cable management backboard			188BBR



110TRA



110TRB

Cable Management Troughs

Description	With Legs	Without Legs
Cable management trough	110TRA	110TRB



Modular 66 Cross Connect Blocks, 66M

Description	Block Size	Capacity	Catalog No.
66M block, Category 5 with cover	4 x 50	50-pair	HPW66M150C5
66M block	4 x 25	25-pair	HPW66M125
66M block	4 x 50	50-pair	HPW66M150
66M cover	-	-	HPW66MCVR

Features/Benefits

- Designed to fill the requirements for data distribution using familiar quick-clips for termination
- Ability to transmit data rates up to 100 MHz

Specifications

- With 4 slots on each row, there is flexibility for various configurations



HPW66M150C5

Modular 66 Cross Connect Blocks, 66B

Description	Block Size	Capacity	Catalog No.
66B block, split (3x) (includes cover)	6 x 6	6-pair	HPW66B36
66B block cover for HPW66B 425 + 350	-	-	HPW66BCVR
66M block	6 x 12	6-pair	HPW66B16
66B block 25-pair, split (4x)	6 x 50	25-pair	HPW66B425
66B block 50-pair, split (4x)	6 x 50	50-pair	HPW66B350

Features/Benefits

- Designed for fast and easy termination incoming telephone cables
- The smaller connecting blocks satisfy the need for a block smaller than the 25-pair size

Specifications

- Stackable for increased plant flexibility



HPW66B16



HPW66B36



HPW66B425

12- and 16-Port Blocks

Description	Wiring	Jack Openings	Capacity	Catalog No.
Modular 66 block	T568B	12-8 pos. jacks	50-pair	BR258066A
Modular 66 block	USOC-RJ25	16-6 pos. jacks	50-pair	BR256066A

Features/Benefits

- Supports installations not large enough to warrant a patch panel
- Designed with printed circuit boards for consistent electrical performance

Specifications

- Category 3 (12-port) performance listed by UL (89D bracket included)



BR258066A

Modular 66 Cross Connect Block Accessories

Description	Catalog No.
Cable routing spool without screw	HPW66SPLA
Cable routing spool with screw	HPW66SPLB
89B bracket (use to mount 66M series blocks)	HPW89B
89D bracket (use to mount 66M series blocks)	HPW89D
Backboard (blue, for 89D and 89B brackets) Includes 2-89B brackets as shown	HPW66BB
66B bracket (use to mount 66B series blocks)	HPW66BBRKT
Bridging clip (0.5" x 0.25") (pack of 100)	HPW66BC100

Features/Benefits

- Cable routing spools provide control and dressing of distribution cables and jumper wires—available with or without screws
- Mounting holes are provided for use in a variety of mounting options

Specifications

- Material: mounting brackets molded of durable self-extinguishing thermoplastic



HPW66BB



HPW89D



HPW66SPLB



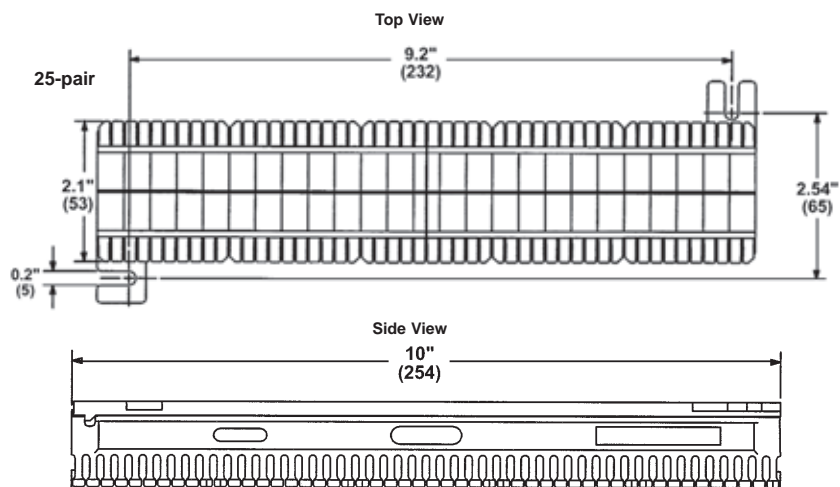
HPW66BBRKT



HPW66BC100

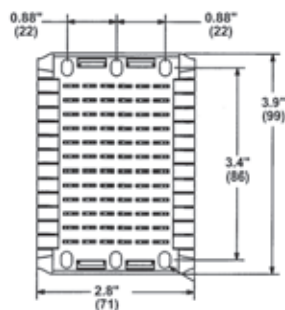


Modular 66M Block



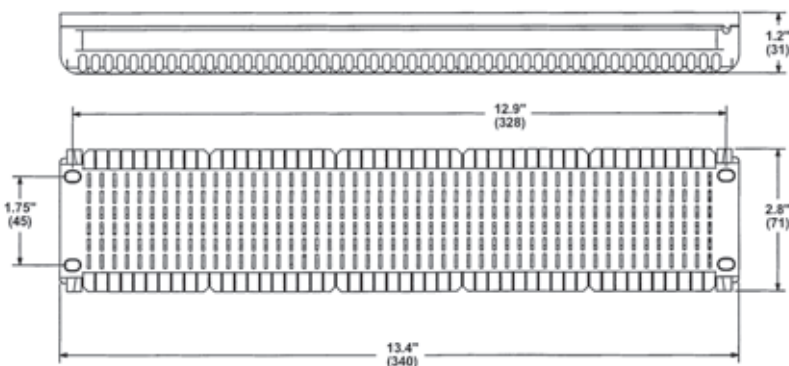
Modular 66B Block

6-pair Top View

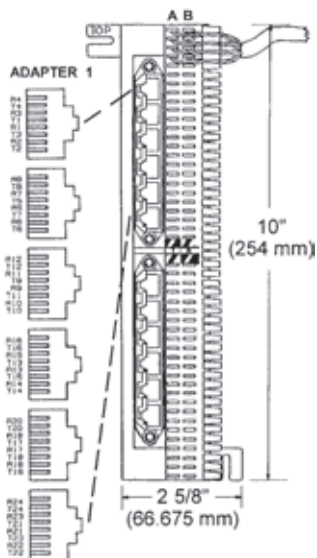


25/50-pair

Side View



Modular 66 Adapters



Modular 66 Contact Configurations

