

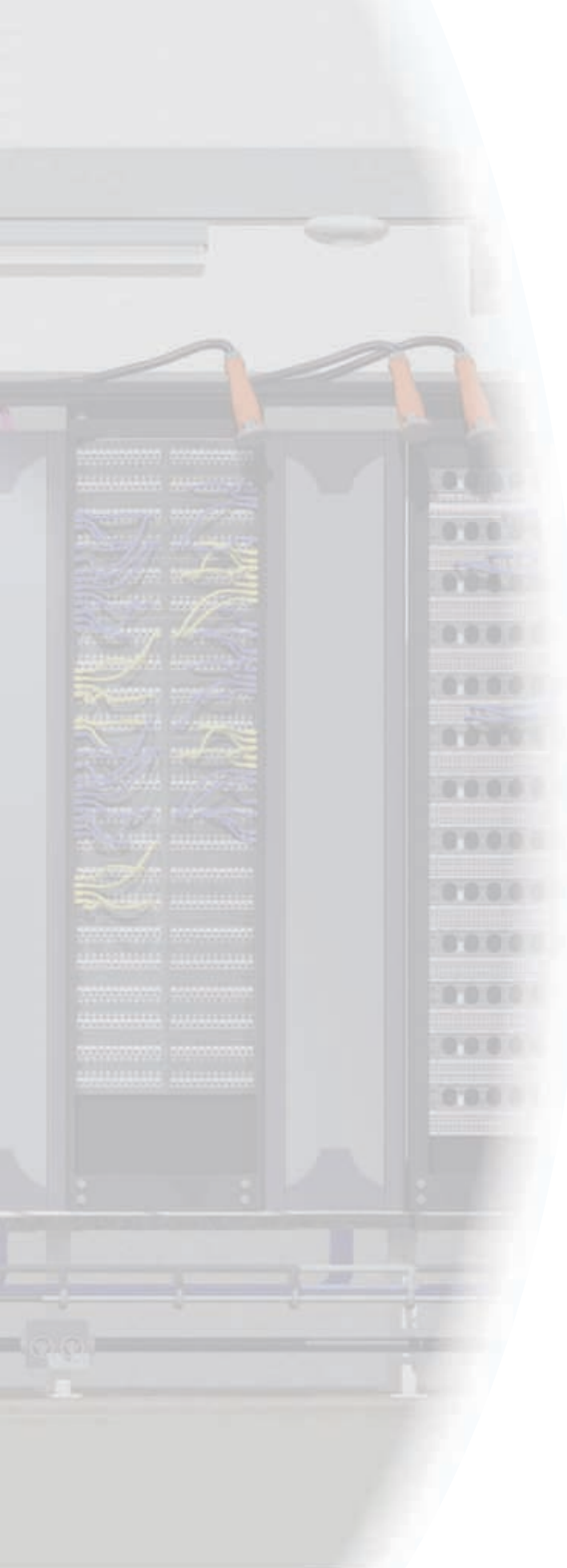


# COPPER

## ASSEMBLIES

Hubbell cable assemblies feature quality components, tuned for each Hubbell System, delivering maximum headroom. Hubbell Patch Cords are constructed with high performance patch cable and are 100% performance tested assuring the highest quality, most reliable patch cord in the industry.





# ASSEMBLIES

PRODUCT	PAGE
BIDNET PRE-TERMINATED COPPER TRUNK ASSEMBLIES.....	D3
NEXTSPEED® ASCENT 40Gb/s QSFP+ PASSIVE COPPER ASSEMBLIES.....	D5
NEXTSPEED® ASCENT CATEGORY 6A PATCH CORDS.....	D7
NEXTSPEED® ASCENT SHIELDED CATEGORY 6A PATCH CORDS.....	D8
NEXTSPEED® CATEGORY 6 PATCH CORDS.....	D9
SPEEDGAIN® CATEGORY 5E PATCH CORDS.....	D9
SPEEDGAIN® SHIELDED CATEGORY 5E PATCH CORDS.....	D9
25-PAIR CABLE ASSEMBLIES.....	D10
TESTERS AND TOOLS.....	D11
ASSEMBLE-TO-ORDER CABLE PROGRAM.....	D12



**Strain Relief**

Locking IDC stuffer cap provides superior strain relief.



**Performance**

Application: qualified for 10 Gigabit Ethernet transmission IEEE 802.3an.



**Reliability**

100% factory tested in a controlled environment.

**Environmental**

- Provides exact lengths and number of connections needed per application.
- Eliminate unwanted cable and packaging on the job site.

**HUBBELL Advantage**

- MISSION CRITICAL® 25-Year Warranty\*
- Reduces Installation Time by More than 70%
- 100% Factory Tested and Terminated
- Made-to-Length Eliminates Cable Waste

*\*Project must be registered in accordance with the Hubbell MISSION CRITICAL® Program.*

**Standards/Listings/Verifications**



- ANSI/TIA-568-C.2 Category 6A component compliant
- ISO 11801 Class D, E, and E<sub>A</sub> component compliant (Category 6A)
- Qualified for PoE+ IEEE 802.3at
- UL Listed 1863





# PRE-TERMINATED COPPER TRUNK ASSEMBLIES



BIDnet pre-terminated copper trunk assemblies are the ideal solution for data centers, open office and other applications where accuracy, reliability and performance are the most important factors.

BIDnet assemblies provide simplicity for permanent links between switches, servers, patch panels, MUTOAs and zone distribution areas, enabling easy MACs to the infrastructure.

Jack to Open

Jack to Jack

Jack to Plug



All BIDnet pre-terminated cable assemblies are made-to-order items. Please call our inside sales team for lead-time and availability. See page J3 for fiber assemblies.

## Specifications

### Jacks

- Nose contact material: beryllium copper with precious metal plating over nickel under-plating
- Contact performance: confirmed over the full range of TIA plug deflection limits

### Plugs

- Mechanical: cable to plug tensile strength: 20+ lbs  
Mating cycles: 2000+
- Material  
Plug body: polycarbonate UL 94-V0  
Plug boot: PVC
- Contact: high strength copper alloy
- Plating: 50 micro-inch precious metal over 100 micro-inch under-plating

### Available Options

- Lengths: 10'–295'
- Legs: 1, 4 and 6
- Category: 5e, 6 and 6A
- Connection: RJ45 jack; RJ45 plug; open end
- Cable: Plenum, riser and LSZH
- UTP: Category 5e; Category 6; Category 6A
- FTP: Category 6 (10GbE)
- Color: Blue and white





**Performance**

PairShield termination technology improves crosstalk providing high performance for error free transmissions.

**Safety**

Insulated push surface for the installer.

**Ergonomic Design**

Ergonomic pull-to-release latch tether and an insulated grasp area.

**Rigidity**

Constructed from Zinc Diecast.

**Technology**

EEPROM cable management interface programmed per the SFF8436 memory map.



- Patent Pending PairShield Technology Minimizes Crosstalk
- Ergonomic Easy Plug-n-Play Connection
- 40 GIG-IB-QDR Certified
- Reduce Power Consumption and EMI Emission

**Specifications**

Cable construction:

- TwinAx: fully shielded differential pairs
- UL style CL2 or CM
- Characteristic impedance: 100. +/- 10 OHMS
- DC blocking caps (0.1uF) on Rx only
- EEPROM programmed per SFF8436
- IC module select buffer included

Plug material:

- Pads – gold plated over nickel over copper base material.
- Shell and latch mechanism – zinc die cast; nickel over copper plating.

**Standards/Listings/Verifications**

- IEEE 802.3ba 40Gb/s
- SFF-8436 – specification for QSFP+
- EEPROM: SFF-8472
- InfiniBand Trade Association (IBTA)
  - Quad data rate (QDR-10Gbs)
  - Dual data rate (DDR-5Gbs)
- QSFP+ 6G SAS 2.1 (under development)



### Applications

- Data center
- InfiniBand 4X SDR, DDR, QDR
- Ethernet 10G,40G
- Rapid IO
- Myrinet 40G
- Top of Rack (Server-to-Server)
- HPC Server Clusters
- Storage Area Networks (SANs)
- Enterprise Data Center Networks

## NEXTSPEED® Ascent 40Gb/s QSFP+ Passive Copper Assemblies

Catalog Number	Description	Cable Type	Length (Meters)	Cable Diameter (mm)	Min Bend Radius (mm)	Wire Gauge	InfiniBand		40 Gigabit Ethernet	6G SAS
							DDR	QDR		
<b>HC3040G05M</b>	NEXTSPEED, Ascent, 40Gb/s, 30AWG, BK, 05M	Passive	0.5	6.20	30	30	Yes	Yes	Yes	Yes
<b>HC3040G1M</b>	NEXTSPEED, Ascent, 40Gb/s, 30AWG, BK, 1M	Passive	1.0	6.20	30	30	Yes	Yes	Yes	Yes
<b>HC3040G2M</b>	NEXTSPEED, Ascent, 40Gb/s, 30AWG, BK, 2M	Passive	2.0	6.20	30	30	Yes	Yes	Yes	Yes
<b>HC3040G3M</b>	NEXTSPEED, Ascent, 40Gb/s, 30AWG, BK, 3M	Passive	3.0	6.20	30	30	Yes	Yes	Yes	Yes
<b>HC3040G4M</b>	NEXTSPEED, Ascent, 40Gb/s, 30AWG, BK, 4M	Passive	4.0	6.20	30	30	Yes	Yes	Yes	Yes
<b>HC3010G5M</b>	NEXTSPEED, Ascent, DDR, 10Gb/s, 30AWG, BK, 5M	Passive	5.0	6.20	30	30	Yes	-	-	Yes
<b>HC2840G05M</b>	NEXTSPEED, Ascent, 40Gb/s, 28AWG, BK, 05M	Passive	0.5	7.80	40	28	Yes	Yes	Yes	Yes
<b>HC2840G1M</b>	NEXTSPEED, Ascent, 40Gb/s, 28AWG, BK, 1M	Passive	1.0	7.80	40	28	Yes	Yes	Yes	Yes
<b>HC2840G2M</b>	NEXTSPEED, Ascent, 40Gb/s, 28AWG, BK, 2M	Passive	2.0	7.80	40	28	Yes	Yes	Yes	Yes
<b>HC2840G3M</b>	NEXTSPEED, Ascent, 40Gb/s, 28AWG, BK, 3M	Passive	3.0	7.80	40	28	Yes	Yes	Yes	Yes
<b>HC2840G4M</b>	NEXTSPEED, Ascent, 40Gb/s, 28AWG, BK, 4M	Passive	4.0	7.80	40	28	Yes	Yes	Yes	Yes
<b>HC2840G5M</b>	NEXTSPEED, Ascent, 40Gb/s, 28AWG, BK, 5M	Passive	5.0	7.80	40	28	Yes	Yes	Yes	Yes
<b>HC2810G6M</b>	NEXTSPEED, Ascent, DDR, 10Gb/s, 28AWG, BK, 6M	Passive	6.0	7.80	40	28	Yes	-	-	Yes
<b>HC2640G2M</b>	NEXTSPEED, Ascent, 40Gb/s, 26AWG, BK, 2M	Passive	2.0	9.80	50	26	Yes	Yes	Yes	Yes
<b>HC2640G3M</b>	NEXTSPEED, Ascent, 40Gb/s, 26AWG, BK, 3M	Passive	3.0	9.80	50	26	Yes	Yes	Yes	Yes
<b>HC2640G4M</b>	NEXTSPEED, Ascent, 40Gb/s, 26AWG, BK, 4M	Passive	4.0	9.80	50	26	Yes	Yes	Yes	Yes
<b>HC2640G5M</b>	NEXTSPEED, Ascent, 40Gb/s, 26AWG, BK, 5M	Passive	5.0	9.80	50	26	Yes	Yes	Yes	Yes
<b>HC2640G6M</b>	NEXTSPEED, Ascent, 40Gb/s, 26AWG, BK, 6M	Passive	6.0	9.80	50	26	Yes	Yes	Yes	Yes
<b>HC2640G7M</b>	NEXTSPEED, Ascent, 40Gb/s, 26AWG, BK, 7M	Passive	7.0	9.80	50	26	Yes	-	-	Yes
<b>HC2640G8M</b>	NEXTSPEED, Ascent, 40Gb/s, 26AWG, BK, 8M	Passive	8.0	11.00	60	26	Yes	Yes	Yes	Yes
<b>HC2440G3M</b>	NEXTSPEED, Ascent, 40Gb/s, 24AWG, BK, 3M	Passive	3.0	11.00	60	24	Yes	Yes	Yes	Yes
<b>HC2440G4M</b>	NEXTSPEED, Ascent, 40Gb/s, 24AWG, BK, 4M	Passive	4.0	11.00	60	24	Yes	Yes	Yes	Yes
<b>HC2440G5M</b>	NEXTSPEED, Ascent, 40Gb/s, 24AWG, BK, 5M	Passive	5.0	11.00	60	24	Yes	Yes	Yes	Yes
<b>HC2440G6M</b>	NEXTSPEED, Ascent, 40Gb/s, 24AWG, BK, 6M	Passive	6.0	11.00	60	24	Yes	Yes	Yes	Yes
<b>HC2440G7M</b>	NEXTSPEED, Ascent, 40Gb/s, 24AWG, BK, 7M	Passive	7.0	11.00	60	24	Yes	Yes	Yes	Yes
<b>HC2440G8M</b>	NEXTSPEED, Ascent, 40Gb/s, 24AWG, BK, 8M	Passive	8.0	11.00	60	24	Yes	-	-	Yes
<b>HC2440G10M</b>	NEXTSPEED, Ascent, 40Gb/s, 24AWG, BK, 10M	Passive	10.0	11.00	60	24	Yes	-	-	Yes



**Performance**

Ascent sled technology improves crosstalk providing increased performance.



**Strain Relief**

Plug and boot constructed from clear polycarbonate.



**Snagless Design**

Easy to route and cable manage without latch getting caught.



**Technology**

Double jacket increases intra-cable separation.

**HUBBELL**  
**Advantage**

- Third Party Verified Category 6A Component Exceeds TIA Limits
- Plug Optimized for High Density Switch Port Count
- 10-Gigabit Application Assurance
- PoE+ Ready

**Specifications**

- Cable construction:
  - Conductor: 26AWG
  - Jacket: flame-retardant PVC – CM rated

**Standards/Listings/Verifications**

- TIA-568-C.2 Category 6A component
- UL Listed 1863



**NEXTSPEED® Ascent Category 6A Patch Cords**

Length	Catalog No.	Length	Catalog No.
1'	<b>HC6Axx01</b>	10'	<b>HC6Axx10</b>
3'	<b>HC6Axx03</b>	15'	<b>HC6Axx15</b>
5'	<b>HC6Axx05</b>	20'	<b>HC6Axx20</b>
7'	<b>HC6Axx07</b>		

xx = Color: **B** (Blue), **BK** (Black), **GN** (Green), **GY** (Gray), **OR** (Orange), **P** (Purple), **R** (Red), **W** (White) and **Y** (Yellow). See color chart on page V30.

Made-to-order lengths are available from 25ft to 100ft in 5ft increments.

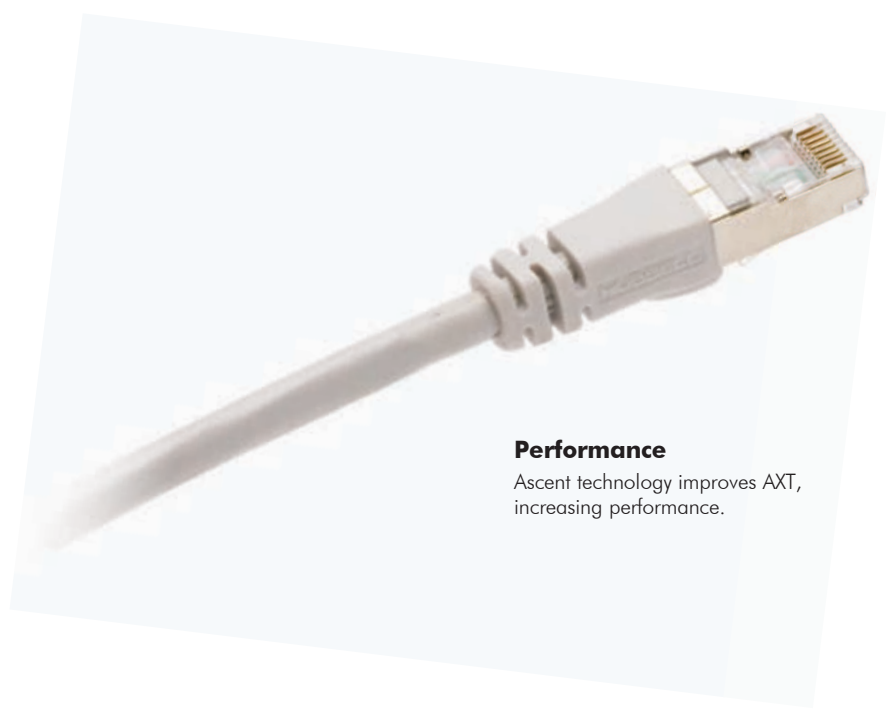


HC6AB20





# ASCENT SHIELDED CATEGORY 6A PATCH CORDS



**Performance**  
Ascent technology improves AXT, increasing performance.



**Durability**  
Over-molded boot provides superior strain relief.



**High Performance**  
Two piece conductor sled design optimizes pair separation and maximizes NEXT performance.



**Reliability**  
100% factory tested in a controlled environment.



- Category 6A Component
- Slim-Line Boot Design for High Density Port Applications
- True 10GBASE-T Assurance
- PoE+ Ready

### Specifications

- Plug construction
- Material
  - Plug body: polycarbonate UL 94V-0
  - Plug boot: PVC
  - Contact: high strength copper alloy
  - Plating: 50 micro-inch gold with 100 micro-inch under plating
- Mechanical
  - Cable to plug tensile strength: 20+ lb
  - Mating cycles: 2000+



### Standards/Listings/Verifications

- TIA-568-C.2 Category 6A
- UL Listed 1863

### NEXTSPEED® Ascent Shielded Category 6A Patch Cords

Length	Catalog No.	Length	Catalog No.
3'	<b>PC6A03xx</b>	15'	<b>PC6A15xx</b>
5'	<b>PC6A05xx</b>	20'	<b>PC6A20xx</b>
7'	<b>PC6A07xx</b>	25'	<b>PC6A25xx</b>
10'	<b>PC6A10xx</b>		

xx = Color: **B** (Blue), **BK** (Black), **GY** (Gray) and **Y** (Yellow). See color chart on page V30.  
Made-to-order lengths are available from 30ft to 75ft in 5ft increments.



PC6A15GY







**HUBBELL**  
**Advantage**

- Third Party Verified Category 6 Component Exceeds TIA Limits
- Plug Optimized for High Density Switch Port Count
- Supports 10/100/1000BASE-T
- PoE+ Ready



**Specifications**



- Cable construction:
  - Conductor: 24AWG UTP
  - Jacket: flame-retardant PVC – CM rated

**Standards/Listings/Verifications**

- TIA-568-C.2 Category 5e and 6 components
- UL Listed 1863

**NEXTSPEED® Category 6 Patch Cords**

Length	Catalog No.	Length	Catalog No.
3'	<b>HC6xx03</b>	15'	<b>HC6xx15</b>
5'	<b>HC6xx05</b>	20'	<b>HC6xx20</b>
7'	<b>HC6xx07</b>	25'	<b>HC6xx25</b>
10'	<b>HC6xx10</b>		

xx = Color: **B** (Blue), **BK** (Black), **GN** (Green), **GY** (Gray), **OR** (Orange), **P** (Purple), **R** (Red), **W** (White) and **Y** (Yellow). See color chart on page V30.  
Made-to-order lengths are available from 30ft to 100ft in 5ft increments.



HC6B03

**SPEEDGAIN® Category 5e Patch Cords**

Length	Catalog No.	Length	Catalog No.
1'	<b>HC5Exx01</b>	10'	<b>HC5Exx10</b>
3'	<b>HC5Exx03</b>	15'	<b>HC5Exx15</b>
5'	<b>HC5Exx05</b>	20'	<b>HC5Exx20</b>
7'	<b>HC5Exx07</b>		

xx = Color: **B** (Blue), **BK** (Black), **GN** (Green), **GY** (Gray), **OR** (Orange), **P** (Purple), **R** (Red), **W** (White) and **Y** (Yellow). See color chart on page V30.  
Made-to-order lengths are available from 25ft to 100ft in 5ft increments.



HC5ER03

**SPEEDGAIN® Shielded Category 5e Patch Cords**

Length	Catalog No.	Length	Catalog No.
3'	<b>PS5E03xx</b>	15'	<b>PS5E15xx</b>
5'	<b>PS5E05xx</b>	20'	<b>PS5E20xx</b>
7'	<b>PS5E07xx</b>	25'	<b>PS5E25xx</b>
10'	<b>PS5E10xx</b>		

xx = Color: **B** (Blue) and **GY** (Gray). See color chart on page V30.



PS5E10GY



## 25-PAIR CABLE ASSEMBLIES

### Gigabit, 25-Pair Cable Assemblies

UOM: 1 cable assembly supplied with mounting screws, male-to-male connectors and a choice of various connector configurations.

Gender	Connector Angles	Length	Catalog No.
Male to male	180° to 90°	5'	<b>525G2105E</b>
Male to male	180° to 90°	10'	<b>525G2110E</b>
Male to male	180° to 90°	15'	<b>525G2115E</b>
Male to male	180° to 180°	5'	<b>525G2205E</b>
Male to male	180° to 180°	10'	<b>525G2210E</b>
Male to male	180° to 180°	15'	<b>525G2215E</b>

Note: See page E11 for 1000BASE-T patch panels.



525G2110E

### Fast Ethernet, 25-Pair Cable Assemblies

UOM: 1 cable assembly supplied with mounting screws, male-to-male connectors and a choice of various connector configurations.

Gender	Connector Angles	Length	100BASE-T Catalog No.
Male to male	180° to 90°	5'	<b>525PS2105E</b>
Male to male	180° to 90°	10'	<b>525PS2110E</b>
Male to male	180° to 90°	15'	<b>525PS2115E</b>
Male to male	180° to 180°	5'	<b>525PS2205E</b>
Male to male	180° to 180°	10'	<b>525PS2210E</b>
Male to male	180° to 180°	15'	<b>525PS2215E</b>
Male to male	180° to 110°	5'	<b>525PS2305E</b>
Male to male	180° to 110°	10'	<b>525PS2310E</b>
Male to male	180° to 110°	15'	<b>525PS2315E</b>

Note: See page E11 for 100BASE-T patch panels.



525PS2205E

### Hydra "Octopus" Cable Assemblies

UOM: 1 cable assembly.

Wiring Format	25-Pair Connector	Plug Type	No. of Legs	Length	Catalog No.
T568B	180°	RJ45 Cat 5e	6	1m	<b>525PS2R06-1ME</b>
T568B	180°	RJ45 Cat 5e	6	2m	<b>525PS2R06-2ME</b>
T568B	180°	RJ45 Cat 5e	6	3m	<b>525PS2R06-3ME</b>
10/100B-T (1,2,3,6)	180°	RJ45 Cat 5e	12	1m	<b>525PS2R12-1ME</b>
10/100B-T (1,2,3,6)	180°	RJ45 Cat 5e	12	2m	<b>525PS2R12-2ME</b>
10/100B-T (1,2,3,6)	180°	RJ45 Cat 5e	12	3m	<b>525PS2R12-3ME</b>



525PS2R06-1ME



**Modular Plugs**

**Specifications**

**Snap On Plug**

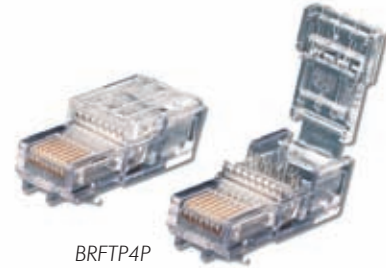
- UL Listed
- 50 micro-inch gold-plated
- For solid cable

**Modular Plugs**

- UL Listed File
- 50 micro-inch gold-plated
- UL 94-V0 rated

**Snap On Modular Plug**

Description	Insulated Conductor Range	Catalog No.
Snap on, 8-position modular plug	.032-.038	<b>BRFTP4P</b>



BRFTP4P

**Modular Plugs**

Description	Category	Insulated Conductor Range	AWG	Catalog No.
8-position/8-contact, snagless	5e	.032-.038	24-26	<b>BRMOD4PSN25</b>



BRMOD4PSN25

**Continuity Tester**

**Features/Benefits**

- Compact size
- One button test results

**Specifications**

- Tests up to 320 feet
- Built-in BNC connector with F-connector

UOM: main and remote continuity test units, 2 F-connector adapters, 2 RJ45 shielded patch cables, 2 belt clips

Description	Catalog No.
Continuity Tester	<b>TCT2</b>



TCT2

**Crimp Tool**

**Features/Benefits**

- Color-coded die-sets for different plug sizes
- Ratchet cycle assures no-fault crimps

**Specifications**

- Parallel compression terminates to FCC specs — no misalignment

Description	Catalog No.
Complete tool kit in durable plastic case includes: crimp tool, 3 die-sets, UTP cable stripper. Die-sets include: RJ45, RJ22 and RJ11	<b>UCTKIT</b>
Crimp tool frame (die-sets sold separately)	<b>UCT</b>
RJ11 die-set	<b>CDTSR11</b>
RJ22 die-set	<b>CDTSR22</b>
RJ45 die-set (snagless or non-snagless)	<b>CDTSR45</b>
RJ45 die-set (non-snagless only)	<b>CDTSR45S</b>
RG6 and RG59 hex crimp die-set	<b>CTDSRG659</b>
Economy crimp tool – includes non-replaceable RJ11, RJ22 and RJ45 die-sets	<b>ECT</b>
RG6 and RG59 compression tool	<b>COMPTRG659</b>



UCT



CDTSR11



CDTSR22



CDTSR45



ECT





**HUBBELL**  
**Advantage**

- High Performance, Short Lead Time
- Custom-configured Assemblies Specific to the Job
- 100% Factory Tested and Assembled
- Made-to-length Assemblies Eliminate Cable Waste

Hubbell's Assemble-to-Order cable assembly program can deliver custom copper and fiber assemblies within a short period of time.

Knowing that every job and every application is different, we offer custom lengths, configurations and colors to custom fit any application.

Whether the application is Cat 5e or 6A, 25-pair, or multi-configured fiber trunk cables, Hubbell can satisfy custom cable assembly needs. Contact Customer Service to order—minimum quantities apply.

**Copper Patch Cords**

- Pre-terminated copper trunk assemblies
- Category 3, 5e, 6 and 6A
- Solid or stranded cable
- Single or double-ended
- Custom lengths
- Custom configurations
- Booted/non-booted
- Snagless or regular plug style
- 11 different colors

**110 and 25-pair**

- Custom lengths
- Custom wiring
- Over molded
- Single- or double-ended

**Fiber Cords**

- Trunk cables – multi-fiber cable
- Simplex
- Duplex
- Pigtailed
- Singlemode
- Multimode
- MTP/MTO assemblies
- LC
- SC
- ST-style
- FC
- MT-RJ
- Angle polish
- Custom lengths

**Audio Video**

- X-END customs
- HD-15 SVGA style
- S-video
- BNC
- RCA
- 3.5mm
- Plenum
- Riser
- Multi-coax
- Multi-bundle application