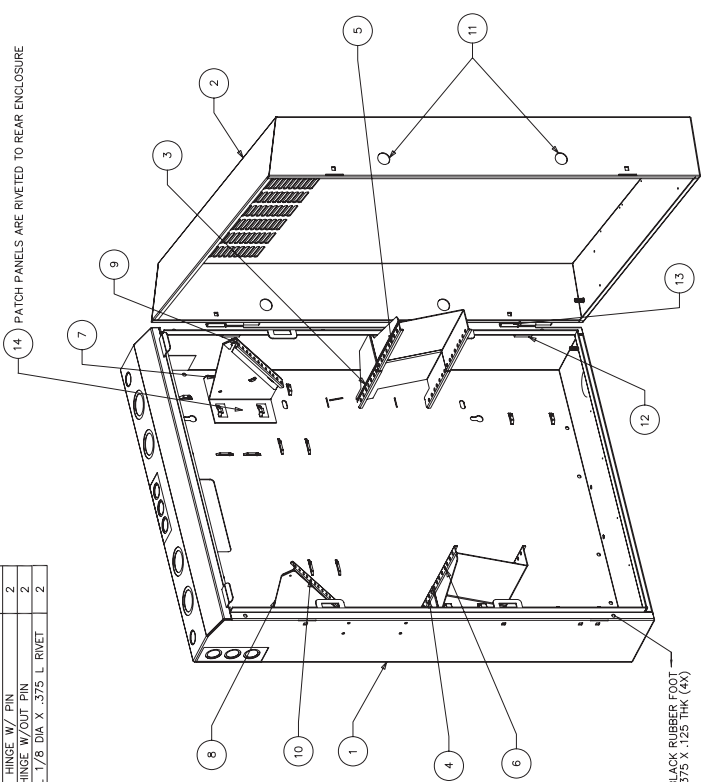
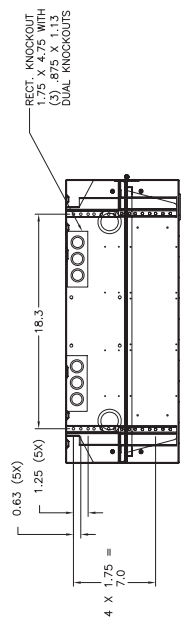
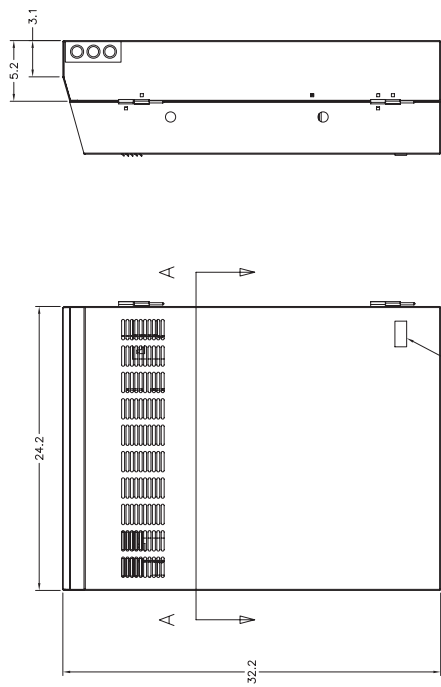
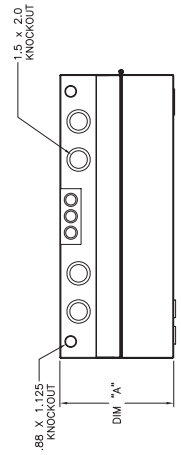


1
2
3
4
5
6
7

ITEM NO.	DESCRIPTION	QTY.
1	ENCLOSURE REAR	1
2	ENCLOSURE DOOR	1
3	2U HUB BRACKET RIGHT	1
4	2U HUB BRACKET LEFT	1
5	4U HUB BRACKET RIGHT	1
6	4U HUB BRACKET LEFT	1
7	BRACKET OUTER RIGHT	1
8	BRACKET INNER LEFT	1
9	BRACKET INNER RIGHT	1
10	BRACKET OUTER LEFT	1
11	LOCK BELLORE	2
12	DOOR HINGE W/ PIN	2
13	DOOR HINGE W/ PIN	2
14	STAINLESS STEEL 1/8 DIA X .375 L RIVET	2

CATALOG NUMBER	HOUSING COLOR	DIM "A"	DESCRIPTION
RE2	GREY STANDARD	7.42	REBOX 2 BACK POSITION
RE4	GREY STANDARD	9.7	REBOX 4 BACK POSITION
RE2B	BLACK STANDARD	7.42	REBOX 2 BACK POSITION
RE4	BLACK STANDARD	9.7	REBOX 4 BACK POSITION



- NOTES:
- THE FOLLOWING ITEMS INCLUDED:
 - 1/4" - 20 X 5/8" CARRIAGE BOLT
 - 2U HUB BRACKET (BLACK)
 - 4U HUB BRACKET (BLACK)
 - 1/4" SQUARE HOLE PLUG
 - MOUNTING TEMPLATE
 - BELLORE KEY
 - RE2F DOOR HINGE ON RIGHT SIDE.

4U REMOTE EQUIPMENT BOX ASSEMBLY SHOWN

4U REMOTE EQUIPMENT BOX ASSEMBLY SHOWN

		Hubbell Premise Wiring HUBBELL INCORPORATED (Delaware) 14 Lovell Hill Road, Storington, Connecticut 06268	
PROJECT REFERENCE: PMS 459		TITLE: REMOTE EQUIPMENT BOX 32" HIGH	
MATERIAL: UNLESS OTHERWISE SPECIFIED, DIMENSIONS AND TOLERANCES (MM): XX = ± 0.2 (A) XXX = ± 0.1 (A) XXXX = ± 0.05 (A)		DRAWN BY: CLERK P. EGO 4/16/2004	
N. ACCORDING OUR DRAWINGS, YOU AGREE TO HOLD HUBBELL CORPORATION AND ITS SUPPLIERS HARMLESS FROM AND TO RELEASE TO OTHERS ALL RIGHTS IN ANY PATENT, TRADEMARK, DESIGN, SERVICE MARK, AND OTHER INTELLECTUAL PROPERTY RIGHTS OF ANY PARTY, WITHOUT PENALTY, OF WHICH WE ARE AWARE.		CHECKED BY: APPROVED BY:	
Created on AUTOCAD		SIZE: D	SHEET: 1 OF 1
REV.		DRAWING NO. C11091	REV.
DATE		SCALE: N/A	C

REV.	ECN	DATE	DESCRIPTION	CHK BY	APP BY
C	6724	03/04/10	ADDED KNOCKOUT CALLOUTS.	MMA	