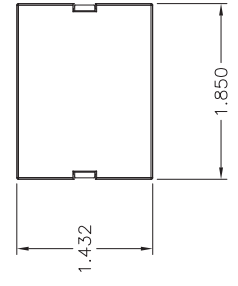
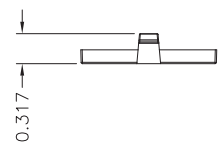
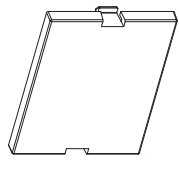


CATALOG NUMBER	COLOR	DESCRIPTION
IMB15W	WHITE	MODULE, STRAIGHT 1.5U BLANK
IMB15OW	OFFICE WHITE	MODULE, STRAIGHT 1.5U BLANK
IMB15EI	ELECTRIC IVORY	MODULE, STRAIGHT 1.5U BLANK
IMB15GY	GRAY	MODULE, STRAIGHT 1.5U BLANK
IMB15BK	BLACK	MODULE, STRAIGHT 1.5U BLANK
IMB15JI	TELCO IVORY	MODULE, STRAIGHT 1.5U BLANK
IMB15AL	ALMOND	MODULE, STRAIGHT 1.5U BLANK



NOTES
UNLESS OTHERWISE SPECIFIED:

- C-UI-US LISTED: E129878
- SPECIFICATIONS SUBJECT TO CHANGE WITHOUT NOTICE

REV.	ECN	DATE	DESCRIPTION	CHG BY	APPD BY
B	5680	8/22/05	ADDED -AL CATALOG NUMBER	CD	
A	4148	02/23/01	INITIAL RELEASE	PSM	HKM

PROJECT REFERENCE:		DIMENSIONING AND TOLERANCE PER ANSI Y14.5M-1982 UNLESS OTHERWISE SPECIFIED, DIMENSIONS ARE IN INCHES (MM). TOLERANCES: XX = ±.015 (1.27) XXX = ±.005 (.127) .XXXX = ±.0025 (.0635) ANGLE TOL. ±1°	
MATERIAL:		IN ACCEPTING OUR DRAWINGS, BLUEPRINTS, OR SUPPORTING DOCUMENTATION FOR QUOTATION OR OTHER PURPOSES, YOU AGREE NOT TO DISCLOSE TO OTHERS DESIGN INFORMATION, OR DESIGN OR INVENTION HEREIN, THAT YOU WILL MAKE NO USE OF SAME WITHOUT PERMISSION	
DRAWN BY: P.S.MAGUIRE 02/23/2001		CREATED ON AUTOCAD	
CHECKED BY: H. MCGREGOR 02/28/2001			
APPROVED BY: H. MCGREGOR 02/28/2001			

HUBBELL		Hubbell Premise Wiring HUBBELL INCORPORATED (Delaware) 14 Lord's Hill Road, Stonington, Connecticut 06378	
TITLE: INFINE STATION MODULE STRAIGHT, BLANK 1.5U		REV. B	
SIZE C	DRAWING NO. C778785	SHEET 1 OF 1	