

6

5

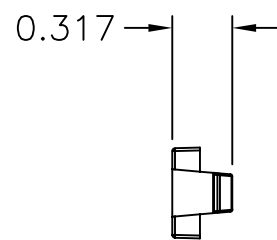
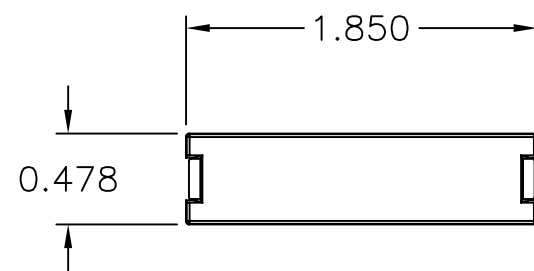
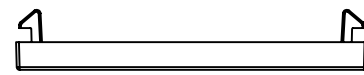
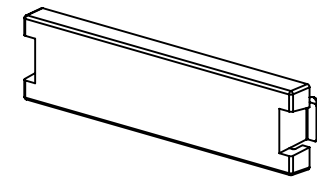
4

3

2

1


CATALOG NUMBER	COLOR	DESCRIPTION
IMB05W	WHITE	MODULE, STRAIGHT 0.5U BLANK
IMB05OW	OFFICE WHITE	MODULE, STRAIGHT 0.5U BLANK
IMB05EI	ELECTRIC IVORY	MODULE, STRAIGHT 0.5U BLANK
IMB05GY	GRAY	MODULE, STRAIGHT 0.5U BLANK
IMB05BK	BLACK	MODULE, STRAIGHT 0.5U BLANK
IMB05TI	TELCO IVORY	MODULE, STRAIGHT 0.5U BLANK
IMB05AL	ALMOND	MODULE, STRAIGHT 0.5U BLANK



NOTES

UNLESS OTHERWISE SPECIFIED:

- 1. C-UL-US LISTED: E129878
- 2. SPECIFICATIONS SUBJECT TO CHANGE WITHOUT NOTICE

Created on AUTOCAD	DIMENSIONING AND TOLERANCE PER ANSI Y14.5M-1982 UNLESS OTHERWISE SPECIFIED, DIMENSIONS ARE IN INCHES (MM). TOLERANCES .XX = ±.01 (.25) .XXX = ±.005 (.127) .XXXX = ±.0025 (.0635) ANGLE TOL ±1°		PROJECT REFERENCE:  MATERIAL:		 <b>Hubbell Premise Wiring</b> HUBBELL INCORPORATED (Delaware) 14 Lord's Hill Road, Stonington, Connecticut 06378		
	IN ACCEPTING OUR DRAWINGS, BLUEPRINTS, OR SUPPORTING DOCUMENTATION FOR QUOTATION OR OTHER PURPOSES, YOU AGREE NOT TO DISCLOSE TO OTHERS THE IDEAS, INFORMATION, OR DESIGNS SHOWN HEREIN, AND THAT YOU WILL MAKE NO USE OF SAME WITHOUT PERMISSION		DRAWN BY: P.S.MAGUIRE 02/23/2001			TITLE: INFINE STATION MODULE BLANK, STRAIGHT 0.5U	
			CHECKED BY: H. McGREGOR 02/28/2001		SIZE: <b>C</b>	DRAWING NO. <b>C773064</b>	REV. <b>B</b>
			APPROVED BY: H. McGREGOR 02/28/2001		SCALE: <b>FULL</b>		SHEET <b>1</b> OF <b>1</b>

REV.	ECN	DATE	DESCRIPTION	CHG BY	APPD BY
B	5680	8/22/05	ADDED -AL CATALOG NUMBER	CD	
A	4148	02/23/01	INITIAL RELEASE	PSM	HKM