

6

5

4

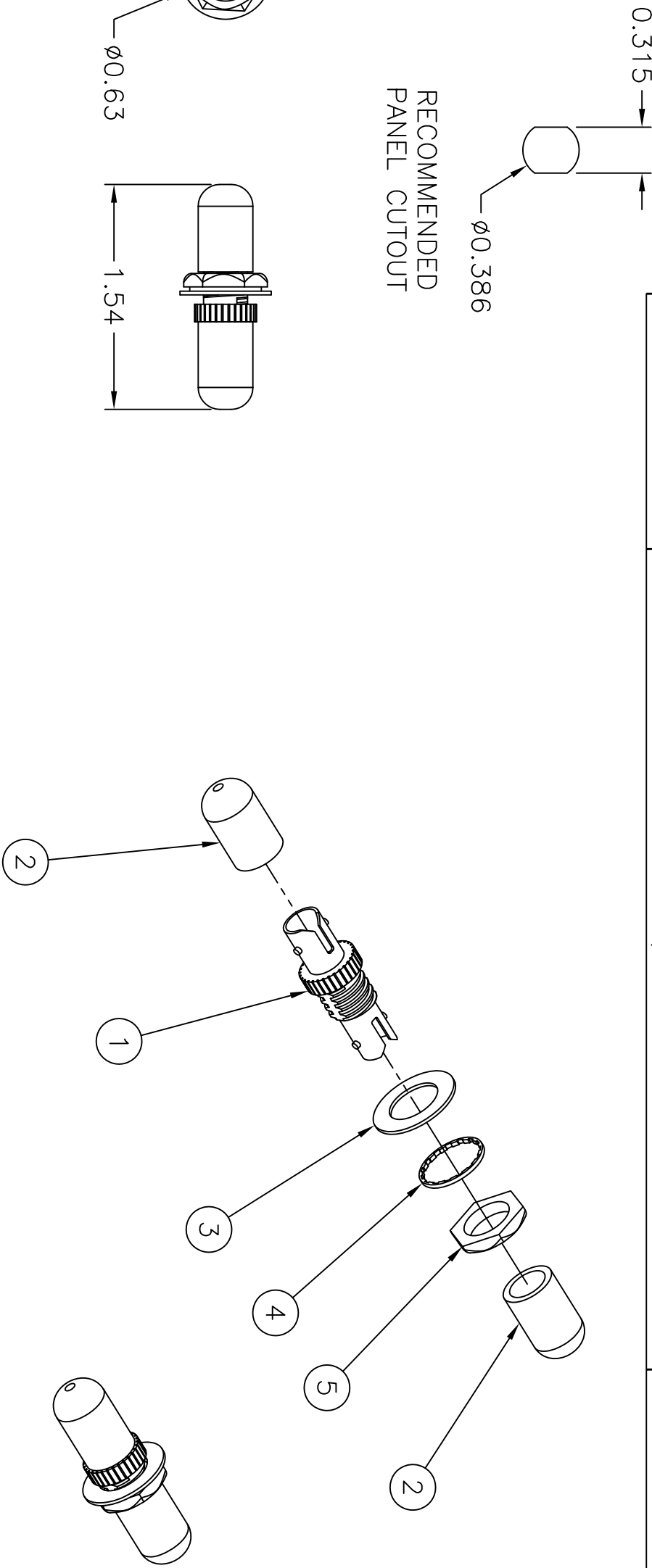
3

2

1

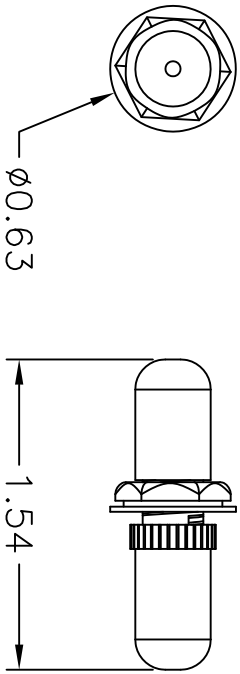
ITEM NO.	DESCRIPTION	QTY.
1	ADAPTER, ST-STYLE	1
2	DUST CAP	2
3	FLAT WASHER	1
4	INTERNAL LOCK WASHER	1
5	NUT	1

CATALOG NUMBER	DESCRIPTION	SPLIT SLEEVE MATERIAL
FASTMPB12	ADAPTER, ST STYLE	PHOS BRONZE
FASTSS12	ADAPTER, ST STYLE	ZIRCONIA

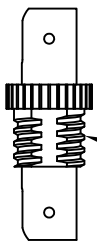


0.315
0.386

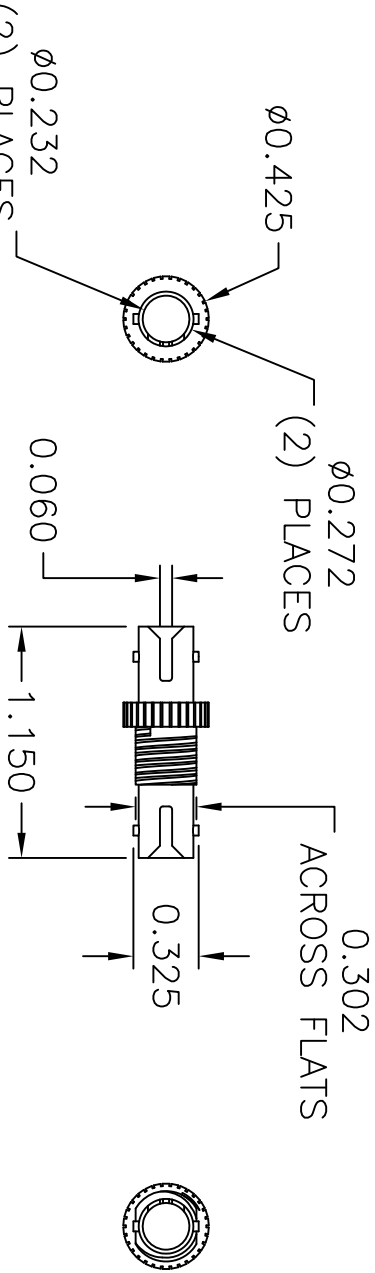
RECOMMENDED
PANEL CUTOUT



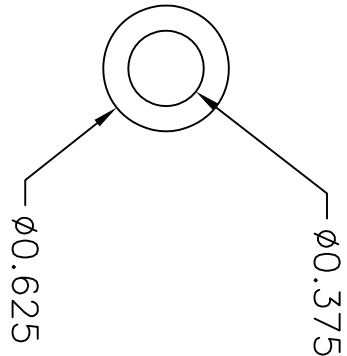
3/8 - 24 UNF-2A OR
3/8 - 32 UNEF-2A



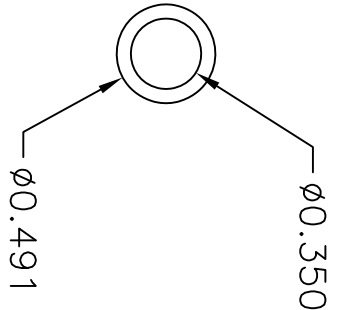
0.302
ACROSS FLATS



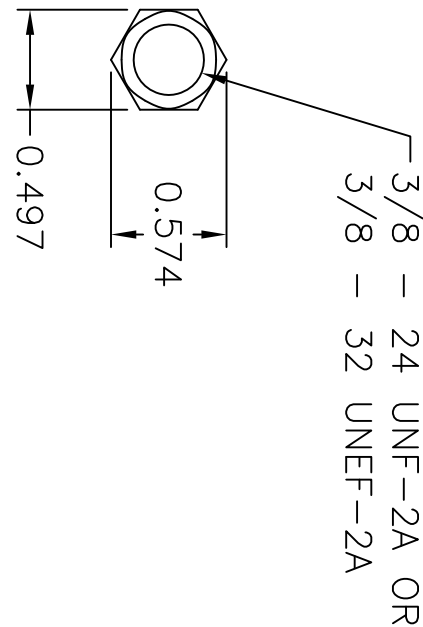
0.025



0.030



0.092



ADAPTER

WASHER

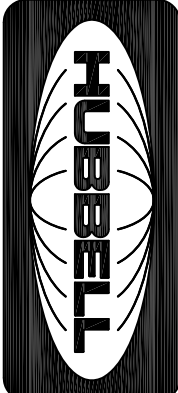
LOCK WASHER

NUT

NOTES:

- ADAPTERS SUPPLIED WITH DUST CAPS INSTALLED AND HARDWARE BAGGED SEPARATELY.
- ADAPTER MATERIAL IS DIE CAST ZINC WITH BLACK OXIDE COATING.
- WASHERS ARE STAINLESS STEEL.
- NUT IS MACHINED BRASS, NICKEL PLATED.
- SPLIT SLEEVE MATERIAL-SEE TABLE
ZIRCONIA COMPATIBLE WITH BOTH SINGLEMODE AND MULTIMODE FIBER.
PHOSPHOR BRONZE COMPATIBLE WITH MULTIMODE FIBER ONLY.
- SPECIFICATIONS SUBJECT TO CHANGE WITHOUT NOTICE.

REV.	ECN	DATE	DESCRIPTION	CHG BY	APPD BY
C	17038	3/15/11	UPDATED NOTE #5	CG	

Created on AUTOCAD									
DIMENSIONING AND TOLERANCE PER ANSI Y14.5M-1982 UNLESS OTHERWISE SPECIFIED, DIMENSIONS ARE IN INCHES (MM). TOLERANCES .XX = ±.01 (.25) .XXX = ±.005 (.127) XXXX = ±.0025 (.0635) ANGLE TOL ±1°					PROJECT REFERENCE:				
IN ACCEPTING OUR DRAWINGS, BLUEPRINTS, OR SUPPORTING DOCUMENTATION FOR QUOTATION OR OTHER PURPOSES, YOU AGREE NOT TO DISCLOSE TO OTHERS THE IDEAS, INFORMATION, OR DESIGNS SHOWN HEREIN, AND THAT YOU WILL MAKE NO USE OF SAME WITHOUT PERMISSION					MATERIAL:				
DRAWN BY: PAUL S. MAGUIRE 05/15/02					 Hubbell Premise Wiring HUBBELL INCORPORATED (Delaware) 14 Lord's Hill Road, Stonington, Connecticut 06378				
CHECKED BY: JOHN LUTZEN 05/22/02									
APPROVED BY: JOHN LUTZEN 05/22/02									
TITLE: FIBER FIBER OPTIC PRODUCTS ADAPTER, SM/MM ST STYLE		SIZE C		DRAWING NO. C10681		REV. C			
SCALE: 1/1		SHEET 1 OF 1							