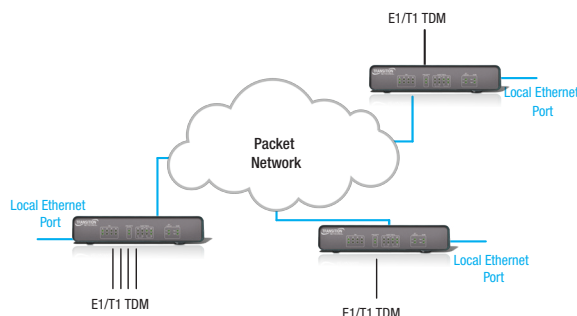


packetband-tdm

PacketBand-TDM-1 & -1MC



The PacketBand-TDM-1 (TDM-1) supplies a clock-locked clear channel or structured E1 or T1 circuit over Ethernet, IP, or MPLS networks. It supports a single E1/T1 and can be used in pairs or with other members of the PacketBand range.

Features

- ▶ Multi-standard TDM pseudowire support: CESoPSN, SATOP, TDM over IP
- ▶ Highly accurate and stable clock recovery
- ▶ G.823 Synchronization levels
- ▶ Various clocking options for different network types and clock recovery requirements
- ▶ Out-of-band clocking method via Multicast services (PacketBand-TDM-1MC)
- ▶ "Inter-works" with other PacketBand family members
- ▶ 1 E1/T1 interface
- ▶ (2) 10/100/1000Mbps RJ45 interfaces
- ▶ (1) 100/1000Mbps SFP interface
- ▶ Support for Jumbo Packets up to 10,240 bytes on Ethernet ports
- ▶ TDM packets can be assigned IP Diffserv (DSCP) or ToS and 802.1p CoS values
- ▶ Supports full 802.1q tagging and associated 802.1p CoS prioritization levels
- ▶ All egress packets, including TDM links, can be prioritized across four output queues
- ▶ 802.1Q VLAN including Q-in-Q
- ▶ Link Aggregation Control Protocol (LACP)
- ▶ Rapid Spanning Tree Protocol (RSTP)
- ▶ Rate limiting
- ▶ Remote management with DbManager
 - + Configuration changes
 - + Alarms & Events
 - + Graphs
 - + Loopbacks and pings
 - + "Sniffer" / monitor port
 - + Software / Firmware updates

Specifications

Clock Recovery	Capable of exceeding G.823 Synchronous Interface requirements (subject to network performance)
TDM port (E1)	RJ45 connector Presents as DCE (crossed cable for DTE) 120 Ohm 75 Ohm user-selectable via converter cable G.703 unstructured G.704 channelized ITU G.706 Selectable CRC4/non-CRC4 HDB3 Transparent to user signaling
TDM port (T1)	RJ45 connector Presents as DCE (crossed cable for DTE) 100 Ohm Unframed 1.544Mbps Framed 1.536Mbps (robbed-bit) ESF or D4 selectable B8ZS or AMI selectable Transparent to user signaling
Ethernet Interfaces	2 x RJ45 UTP 10/100/1GE Auto-sensing or manual SFP cage (module not supplied) for various fiber modes
Local Management Port	RJ12 Asynchronous Auto-sensing to 115kbps
Oscillator Performance	Hold-over 24hrs 4ppb Aging per day 0.5ppb Temperature Stability 14ppb
IP & MAC Address	Single MAC address, IP address, subnet mask and default gateway, Support for DHCP
Configuration	Held in non-volatile memory
Power (AC)	Internal via IEC connector Auto-sensing 96VAC-240VAC Max consumption 0.2Amps RMS @230VAC MTBF 400,000hrs
Power (DC)	1. Nominal -48VDC, 4mm terminal block, -33VDC to -75VDC, 0.35A max, MTBF 1,790,000hrs 2. Nominal -24VDC, 4mm terminal block, -18VDC to -75VDC, 0.55A max, MTBF 800,000hrs
Dimensions	Width: 8.86" [225 mm] Depth: 7.87" [200 mm] Height: 1.73" [44 mm]
Environment	Operating Temperature -20°C to +55°C Humidity 10-90% non-condensing
Safety	EC EN60950-1:2002 ACA TS001:1997 ACS/NZ60950:2000 AS/NZS3260:1993 IEC950
Warranty	1 year hardware & software

Ordering Information

PB-TDM-1-AC

Single T1/E1 CESoPSN unit. (2xUTP) 10/100/GE ports and (1xSFP) port for WAN with Asymmetrical and Plesiochronous clocking. Includes Enhanced Clock, 32 logical links, serial control cable and DbManager Lite. AC Power.

PB-TDM-1-24VDC

Single T1/E1 CESoPSN unit. (2xUTP) 10/100/GE ports and (1xSFP) port for WAN with Asymmetrical and Plesiochronous clocking. Includes Enhanced Clock, 32 logical links, serial control cable and DbManager Lite. 24 VDC Power.

PB-TDM-1-48VDC

Single T1/E1 CESoPSN unit. (2xUTP) 10/100/GE ports and (1xSFP) port for WAN with Asymmetrical and Plesiochronous clocking. Includes Enhanced Clock, 32 logical links, serial control cable and DbManager Lite. 48 VDC Power.

PB-TDM-1MC-AC

Single T1/E1 CESoPSN unit. (2xUTP) 10/100/GE ports and (1xSFP) port for WAN with Asymmetrical and Plesiochronous clocking. Includes multicast option. Also includes Enhanced Clock, 32 logical links, serial control cable and DbManager Lite. AC Power.

PB-TDM-1MC-24VDC

Single T1/E1 CESoPSN unit. (2xUTP) 10/100/GE ports and (1xSFP) port for WAN with Asymmetrical and Plesiochronous clocking. Includes multicast option. Also includes Enhanced Clock, 32 logical links, serial control cable and DbManager Lite. 24 VDC Power.

PB-TDM-1MC-48VDC

Single T1/E1 CESoPSN unit. (2xUTP) 10/100/GE ports and (1xSFP) port for WAN with Asymmetrical and Plesiochronous clocking. Includes multicast option. Also includes Enhanced Clock, 32 logical links, serial control cable and DbManager Lite. 48 VDC Power.

Optional Accessories (sold separately)

PB/cont

Replacement serial controller cable

PB/cpack/1P

Cable Pack for single E1/T1 PacketBand. 2m

PB/Xcpack/1P

Crossed-cable pack for single E1/T1 PacketBand if connecting to DCE. 2m

PB/cpack/75BNC/01

120 Ohm RJ45 to 75 Ohm dual BNC conversion cable 20cm

PB/RMK/3/D

19" rack kit for 2 units side by side

PB/RMK/3/S

19" rack kit for single unit (Excludes chassis based systems and extended temperature model)

PB/RMK/W/1

Wall mount kit