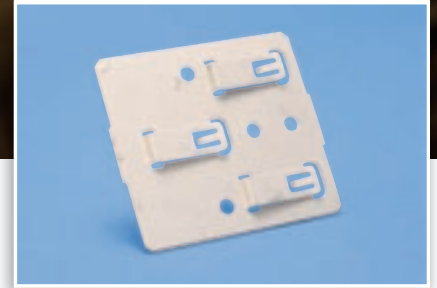
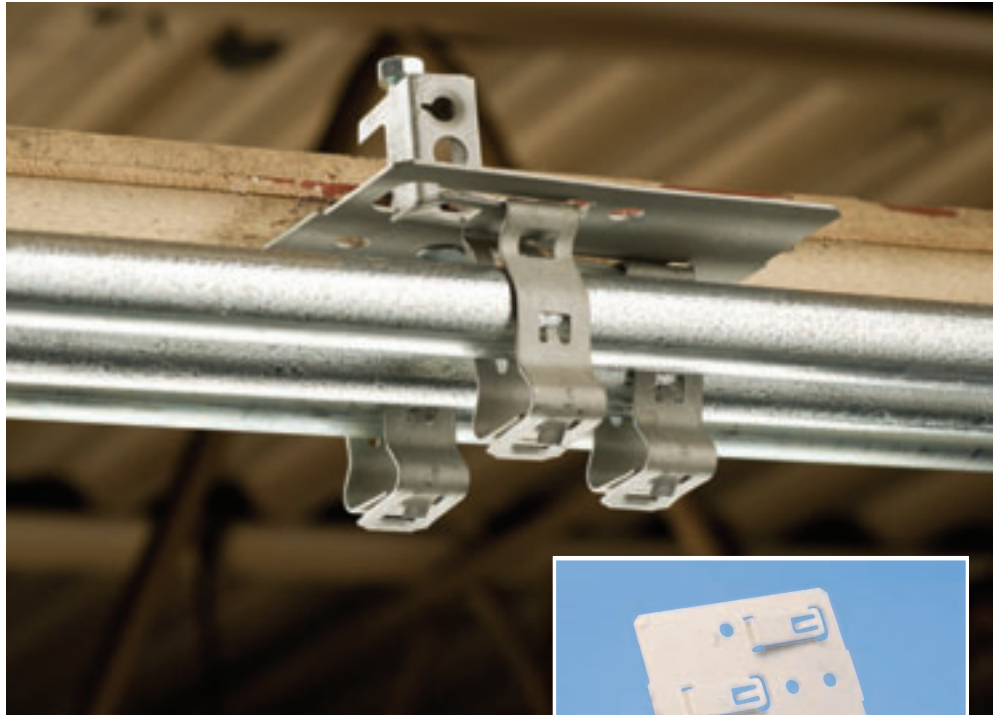


# SBT18 Multiple Conduit Mounting Plate

## Features

- Affixes up to three conduit clips with an easy snap-in attachment
- Installs without tools
- Aligns with standard 1-1/2" deep electrical box knockouts and mounting holes
- Eliminates conduit bend for 1/2" and 3/4" sizes
- Comes in a variety of riveted assemblies
- Installs horizontally or vertically
- Attaches to footed box supports for applications below raised floors



The SBT18 Multiple Conduit Mounting Plate enables contractors to install up to three runs of conduit on a variety of surfaces including beams, purlins, metal and wood studs, and plain and threaded rods. Traditionally, contractors use a time-consuming method to run conduit that involves cutting lengths of strut, clamping those lengths to the mounting surface and using strut clamps to attach the conduit. The SBT18 provides for quick and easy snap-in attachment of up to three conduit clips and requires no tools for installation.

The SBT18 is available in a variety of pre-riveted assemblies including hammer-on, beam clamp and multi-function clip. When used with a footed box support, the SBT18 facilitates conduit runs below raised floors.

The versatile mounting plate installs horizontally or vertically. It aligns with standard 1-1/2" deep electrical box knockouts and mounting holes. Because of this, the SBT18 eliminates conduit bends for 1/2" and 3/4" sizes.



# SBT18 Multiple Conduit Mounting Plate

## Cost Comparison: SBT18 vs. Traditional Conduit Installation

The following example demonstrates the significant savings of both material and labor associated with the SBT18. This example compares the costs of installing three 10-ft. lengths of conduit to the underside of a beam, attached at both ends.

### Traditional Method (Using Strut)

Tools Needed: Wrench and Screwdriver

Material: (Costs come from ERICO price sheets)

| Material Description    | Qty | Cost each   | Cost Total     |
|-------------------------|-----|-------------|----------------|
| 1 Foot Section of Strut | 2   | \$1.13/foot | \$2.26         |
| Window Brackets         | 4   | \$4.78      | \$19.12        |
| Conduit Clamps          | 6   | \$.73       | \$4.38         |
| <b>Total Material</b>   |     |             | <b>\$25.76</b> |

Labor: (Costs come from 2005 RS Means book for Cleveland)

| Operation              | Time Required        | Labor Rate | Cost          |
|------------------------|----------------------|------------|---------------|
| Cut Strut Sections     | 2 min, 25 sec        | \$44/hr.   | \$1.77        |
| Attach Strut to Beam   | 4 min, 15 sec        | \$44/hr.   | \$3.12        |
| Attach Clamps to Strut | 2 min, 49 sec        | \$88/hr.   | \$4.13        |
| <b>Total Labor</b>     | <b>9 min, 29 sec</b> |            | <b>\$9.02</b> |

**Total Installed Cost = \$25.76 + \$9.02 = \$34.78**

### SBT18 Method

Tools Needed: Hammer

Material: (Costs come from ERICO price sheets)

| Material              | Description                               | Qty | Cost Each | Cost Total    |
|-----------------------|---|-----|-----------|---------------|
| SBT1824               | Hammer-On Multiple Conduit Mounting Plate | 2   | \$1.45    | \$2.90        |
| 812M                  | Conduit Clip                              | 6   | \$.24     | \$1.44        |
| <b>Total Material</b> |   |     |           | <b>\$4.34</b> |

Labor: (Costs come from 2005 RS Means book for Cleveland)

| Operation                | Time Required        | Labor Rate | Cost          |
|--------------------------|----------------------|------------|---------------|
| Attach 812M's to SBT1824 | 32 sec               | \$44/hr.   | \$0.39        |
| Attach SBT1824 to Beam   | 21 sec               | \$44/hr.   | \$0.26        |
| Attach Conduits to 812   | 32 sec               | \$88/hr.   | \$0.78        |
| <b>Total Labor</b>       | <b>1 min, 25 sec</b> |            | <b>\$1.43</b> |

**Total Installed Cost = \$4.34 + \$1.43 = \$5.77**

**Total Savings = \$34.78 - \$5.77 = \$29.01 = > 80%**

| Part No.   | Fig. No. | Description  | Qty./Box |
|------------|----------|--|----------|
| SBT18      | 1        | Multi-Run, Conduit Hanger Plate                      | 50       |
| SBT1824SM  | 5        | Hammer-on, side mount, 1/8" – 1/4" flange            | 50       |
| SBT1858SM  | 5        | Hammer-in, side mount, 5/16" – 1/2" flange           | 50       |
| SBT18912SM | 5        | Hammer-on side mount, 9/16" – 3/4" flange            | 50       |
| SBT1824    | 6        | Hammer-on, underside, 1/8" – 1/4" flange             | 50       |
| SBT1858    | 6        | Hammer-on, underside, 5/16" – 1/2" flange            | 50       |
| SBT18912   | 6        | Hammer-on, underside, 9/16" – 3/4" flange            | 50       |
| SBT184Z34  | 4        | Multi-function clip, #12 wire through 1/4" plain rod | 50       |
| SBT186Z34  | 4        | Multi-function clip, 3/8" plain or threaded rod      | 50       |
| SBT18BC    | 2        | Beam clamp through 1/2" flange                       | 50       |
| SBT18BC200 | 3        | Beam clamp, 1/8" to 5/8" flanges                     | 50       |
| S3575BP50  |          | 1/4-20 x 3/8" round head screw                       | 50       |

Fig. 1



Fig. 2

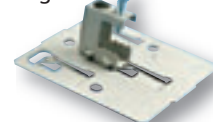


Fig. 3



Fig. 4



Fig. 5



Fig. 6



**WARNING**  
ERICO products shall be installed and used only as indicated in ERICO's product instruction sheets and training materials. Instruction sheets are available at [www.erico.com](http://www.erico.com) and from your ERICO customer service representative. Improper installation, misuse, misapplication or other failure to completely follow ERICO's instructions and warnings may cause product malfunction, property damage, serious bodily injury and death.

Copyright ©2009, 2010 ERICO International Corporation. All rights reserved.  
CADDY, CADWELD, CRITEC, ERICO, ERIFLEX, ERITECH, and LENTON are registered trademarks of ERICO International Corporation.