

## Mounting Kits

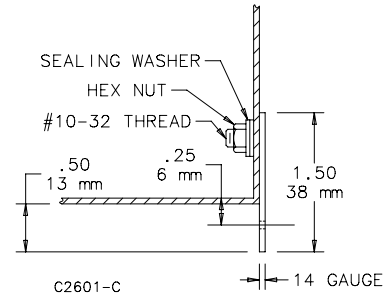
### Mounting Bracket Kits



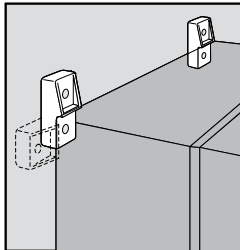
Mounting bracket kits are field-installable. Composite kits are rated for 500 lb. (227 kg) maximum load. Kit includes four brackets and mounting hardware for all Type 1 Networking wall-mount and COMLINE® enclosures. DMFK1 and DMFK2 include two 14 gauge steel external mounting brackets and fasteners. Mounting bracket kit CMFK and CMFKSS each contain four 12 gauge steel or Type 304 stainless steel external mounting brackets and fasteners. Sealing washers are provided with each kit to maintain Type 4 or 12 rating after installation. Steel mounting brackets are plated.

Bulletin: A80

| Catalog Number | Description                          |
|----------------|--------------------------------------|
| DMFK1          | Mounting bracket kit                 |
| DMFK2          | Mounting bracket kit                 |
| CMFK           | Steel mounting kit                   |
| CMFKSS         | Stainless steel mounting bracket kit |
| CMTGFT         | Composite mounting bracket kit       |



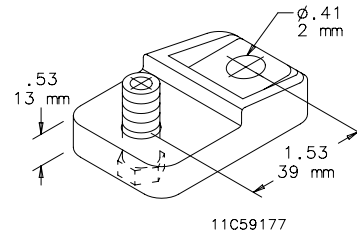
### ULTRX® Mounting Bracket Kit



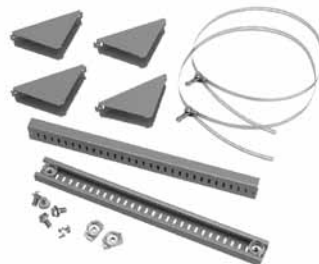
Kit is field-installable. Corrosion-resistant fiberglass material. Type 316 stainless steel mounting hardware is included. Four mounting brackets per kit.

Bulletin: UX1Y

| Catalog Number | Description          | Kit Qty. |
|----------------|----------------------|----------|
| UUMF           | Mounting Bracket Kit | 4        |



### Pole-Mount Kit



Use to mount CONCEPT®, Networking and wall-mount enclosures to poles of various sizes and shapes. Simply attach the plated steel channel bar to the mounting holes at the back of the enclosure and wrap the stainless steel strap around the pole and through the bar. Kit includes two mounting channels, two straps suitable for 3-in. (76-mm) to 12-in. (305-mm) diameter pole and mounting hardware.

Bulletin: CWY

| Catalog Number | Fits Enclosure (in.) | Fits Enclosure (mm) |
|----------------|----------------------|---------------------|
| CPMK12         | when B = 12.00       | when B = 305        |
| CPMK16         | when B = 16.00       | when B = 406        |
| CPMK20         | when B = 20.00       | when B = 508        |
| CPMK24         | when B = 24.00       | when B = 610        |
| CPMK30         | when B = 30.00       | when B = 762        |

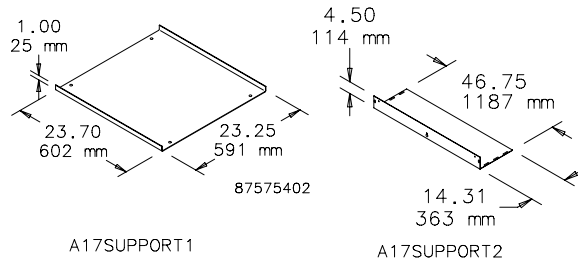
## Mounting Kits

### Bottom Support Kit

Bolt-in bottom support plate with mounting hardware. Coated with ANSI 61 gray polyester powder paint. Required when installing Hoffman floor stands or casters on A17 fiberglass free-standing enclosures.

Bulletin: A17Y

| Catalog Number | Use With                           |
|----------------|------------------------------------|
| A17SUPPORT1    | A17 One-Door Fiberglass Enclosures |
| A17SUPPORT2    | A17 Two-Door Fiberglass Enclosures |

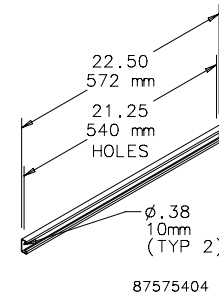


### Unistrut Mounting Kit

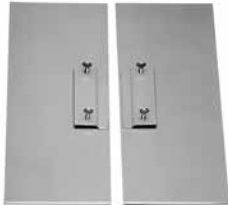
Bolt-in internal unistrut channel (8 pieces) with mounting hardware. Required to install Hoffman unistrut-mounted free-stand panels and accessories in two-door A17 fiberglass enclosures. Hoffman A17SUPPORT2 plate must also be installed to secure unistrut.

Bulletin: A17Y

| Catalog Number | Use With                           |
|----------------|------------------------------------|
| A17UNISTRUT    | A17 Two-Door Fiberglass Enclosures |



### Enclosure Stabilizers



Helps prevent injury to workers by stabilizing floor-mount enclosures which are not bolted down. To install, slip the stabilizer under the floor stand and tighten two thumb screws. Made from .19-in. (5-mm) steel plate. Bright orange finish.

Bulletin: A80

| Catalog Number | Description     |
|----------------|-----------------|
| AENST          | Two stabilizers |

## Mounting Kits

### Floor Stand Kit



#### Industry Standards

Product maintains UL/CSA Type 4, 4X (stainless steel only) and Type 12 when properly installed on Hoffman Type 4 or Type 12 enclosures.

#### Application

Kits are easily installed on most wall-mount Hoffman enclosures. Can also be used to elevate Hoffman free-stand enclosures.

To install, drill holes in the bottom of the enclosure and bolt the floor stands to the enclosure. It is not necessary to remove the wall-mount brackets from the enclosure.

#### Specifications

12 gauge steel floor stand has an ANSI 61 gray polyester powder finish over pretreated surfaces. Stainless steel floor stand is Type 304.

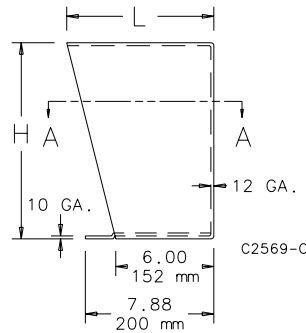
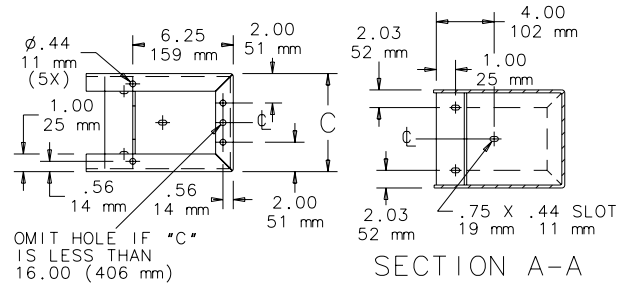
#### Components

Each kit includes two stands. Two sets of floor stands are recommended for enclosures larger than double door free-stand enclosures.

#### Ordering

Special heights, depths, materials and finishes can be provided on custom order. Consult factory for information.

Bulletin: A4SY, A80



| Catalog Number | Material        | Height, H (in.) | Height, H (mm) | Width, C (in.) | Width, C (mm) | L (in.) | L (mm) |
|----------------|-----------------|-----------------|----------------|----------------|---------------|---------|--------|
| AFK0608        | Steel           | 6.00            | 152            | 8.06           | 205           | 7.06    | 179    |
| AFK0610        | Steel           | 6.00            | 152            | 10.06          | 256           | 7.06    | 179    |
| AFK0612        | Steel           | 6.00            | 152            | 12.06          | 306           | 7.06    | 179    |
| AFK0618        | Steel           | 6.00            | 152            | 18.06          | 459           | 7.06    | 179    |
| AFK1208        | Steel           | 12.00           | 305            | 8.06           | 205           | 8.12    | 206    |
| AFK1210        | Steel           | 12.00           | 305            | 10.06          | 256           | 8.12    | 206    |
| AFK1212        | Steel           | 12.00           | 305            | 12.06          | 306           | 8.12    | 206    |
| AFK1216        | Steel           | 12.00           | 305            | 16.06          | 408           | 8.12    | 206    |
| AFK1218        | Steel           | 12.00           | 305            | 18.13          | 461           | 8.12    | 206    |
| AFK1220        | Steel           | 12.00           | 305            | 20.06          | 510           | 8.12    | 206    |
| AFK1808        | Steel           | 18.00           | 457            | 8.06           | 205           | 9.17    | 233    |
| AFK1810        | Steel           | 18.00           | 457            | 10.06          | 256           | 9.17    | 233    |
| AFK1812        | Steel           | 18.00           | 457            | 12.06          | 306           | 9.17    | 233    |
| AFK1816        | Steel           | 18.00           | 457            | 16.06          | 408           | 9.17    | 233    |
| AFK2408        | Steel           | 24.00           | 610            | 8.06           | 205           | 10.23   | 260    |
| AFK2410        | Steel           | 24.00           | 610            | 10.06          | 256           | 10.23   | 260    |
| AFK2412        | Steel           | 24.00           | 610            | 12.06          | 306           | 10.23   | 260    |
| AFK2416        | Steel           | 24.00           | 610            | 16.06          | 408           | 10.23   | 260    |
| AFK1208SS      | Stainless Steel | 12.00           | 305            | 8.06           | 205           | 9.09    | 231    |
| AFK1210SS      | Stainless Steel | 12.00           | 305            | 10.06          | 256           | 9.09    | 231    |
| AFK1212SS      | Stainless Steel | 12.00           | 305            | 12.06          | 306           | 9.09    | 231    |
| AFK1216SS      | Stainless Steel | 12.00           | 305            | 16.06          | 408           | 9.09    | 231    |
| AFK1218SS      | Stainless Steel | 12.00           | 305            | 18.06          | 459           | 9.09    | 231    |
| AFK1224SS      | Stainless Steel | 12.00           | 305            | 24.06          | 611           | 9.09    | 231    |
| AFK2410SS      | Stainless Steel | 24.00           | 610            | 10.06          | 256           | 9.09    | 231    |
| AFK2412SS      | Stainless Steel | 24.00           | 610            | 12.06          | 306           | 9.09    | 231    |

# Mounting Kits

## Notes