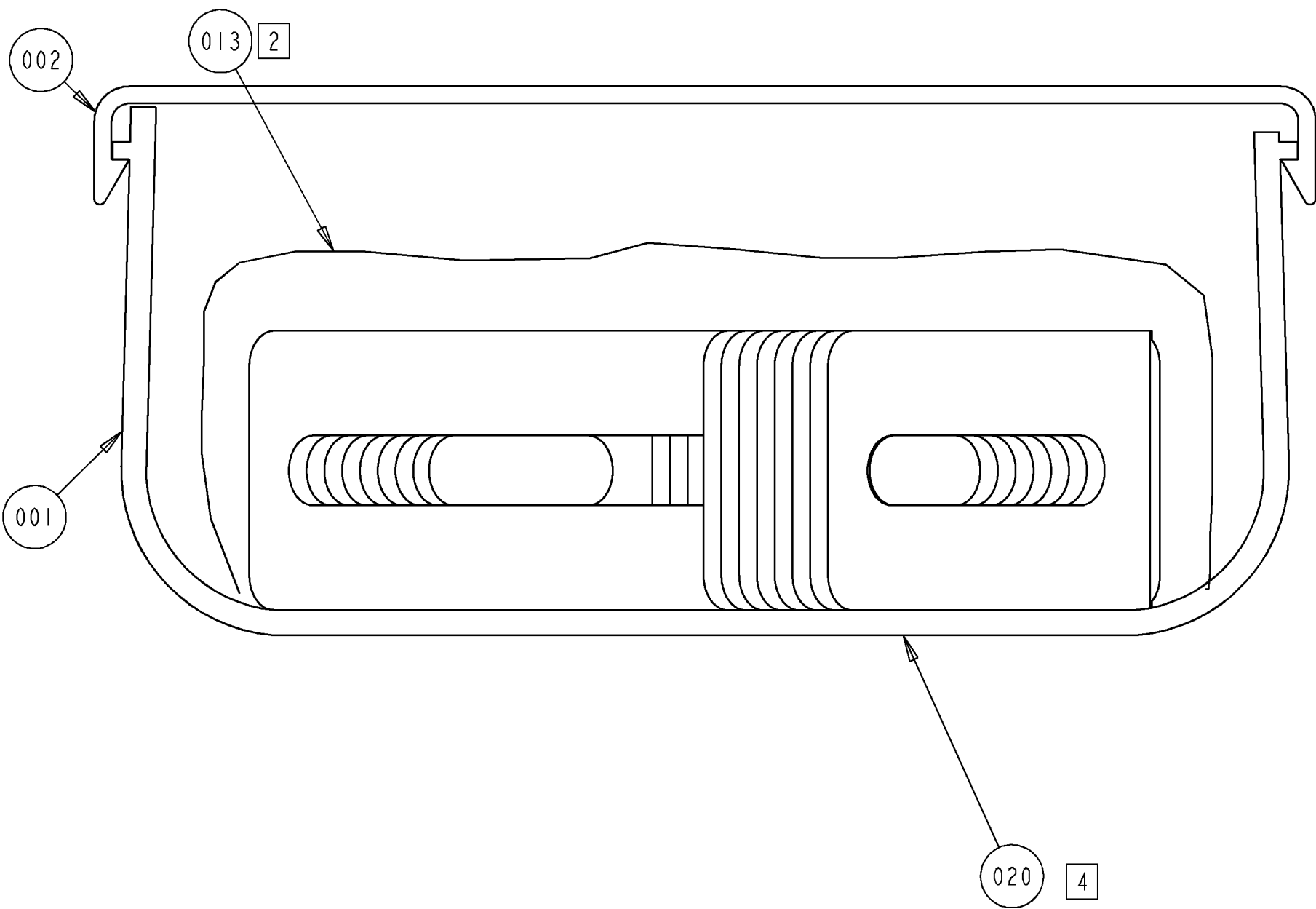



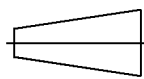
REV	MCO	DWN	DATE
L	20309628	AVM	24-JUN-11
M	20317282	RCR	18-JAN-12



**NOTES:**

- CUT EACH OF THE 6 GROMMET STRIPS F/N 003 TO 2.806 +/- 0.125 INCHES LONG STRIPS. SHIP THE SIX 2.806 +/- 0.125 STRIPS ALONG WITH THE 2 REMAINING STRIPS
- SECURE BAG F/N 013 IN F/N 001.
- ATTACH COVER F/N 002 TO DUCT F/N 001 AND SECURE EACH END OF ASSEMBLY TO SECURE COVER IN PLACE. DIFFERENCE IN OVERALL LENGTH OF DUCT AND COVER IS ACCEPTABLE.
- LOCATE F/N 020 LABEL ON BACK OF F/N 001 AS SHOWN.

OBS	1470295	FGSB-KTW2-E	1.5"	BLACK	YES	C
	1150302	FGSO-KTW2-E	1.5"	ORANGE	YES	D
	1150301	FGS-KTW2-E	1.5"	YELLOW	YES	F
OBS	1017437	FGSO-KTW2-E	1.5"	ORANGE	NO	B
OBS	1017436	FGS-KTW2-E	1.5"	YELLOW	NO	B
PART NUMBER		CATALOG NUMBER	SLOT SPACING	COLOR	ECOLABEL	REV
	INFORMATION ON THIS DOCUMENT IS PROPRIETARY TO TE CONNECTIVITY AND SHALL NOT BE USED, COPIED, REPRODUCED OR DISCLOSED IN WHOLE OR IN PART WITHOUT WRITTEN CONSENT OF TE CONNECTIVITY.		TITLE			
			FBRGUIDE, VERT 4X2, (ASSY DWG)			
	ALL DIMS AND TOLERANCES ARE INCHES UNLESS OTHERWISE SPECIFIED		C SIZE	DRAWING NUMBER		M REV
	DO NOT SCALE DRAWING		ENGR: S ZIMMEL DWN: MJ MORRIS		SHT. 1 OF 1	



**DIMENSIONS IN INCHES  
THIRD ANGLE PROJECTION**