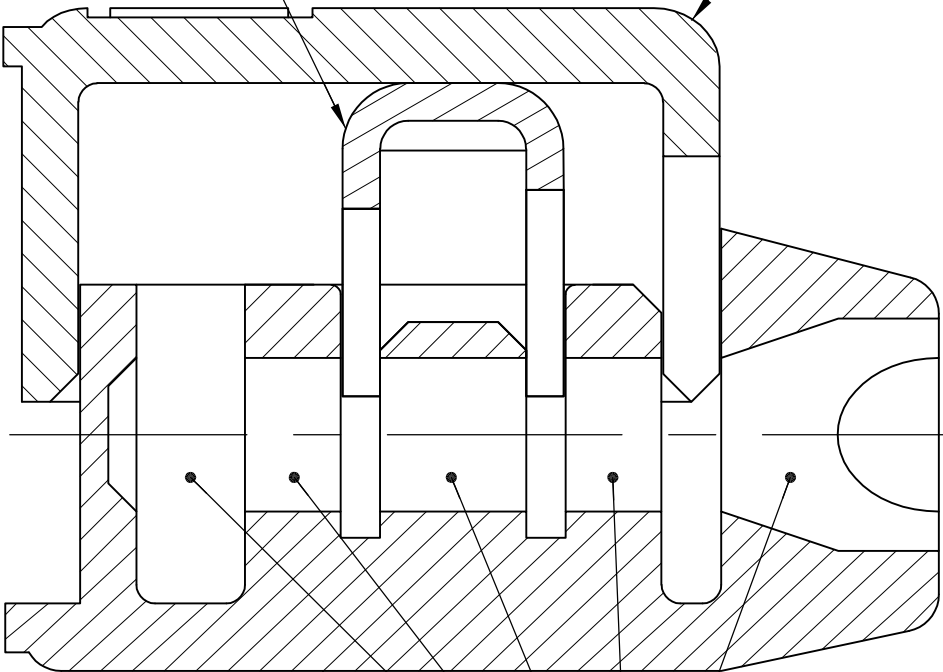


LOC	DIST	REVISIONS					
		P	LTR	DESCRIPTION	DATE	DWN	APVD
HM	00		V	REV PER ECO-06-000425	10APR06	WS	NJ
			W	REV ECO-06-026329	19JAN07	LH	NJ
			Y	REV ECO-09-001811	30JAN09	LH	JJ

TERMINAL

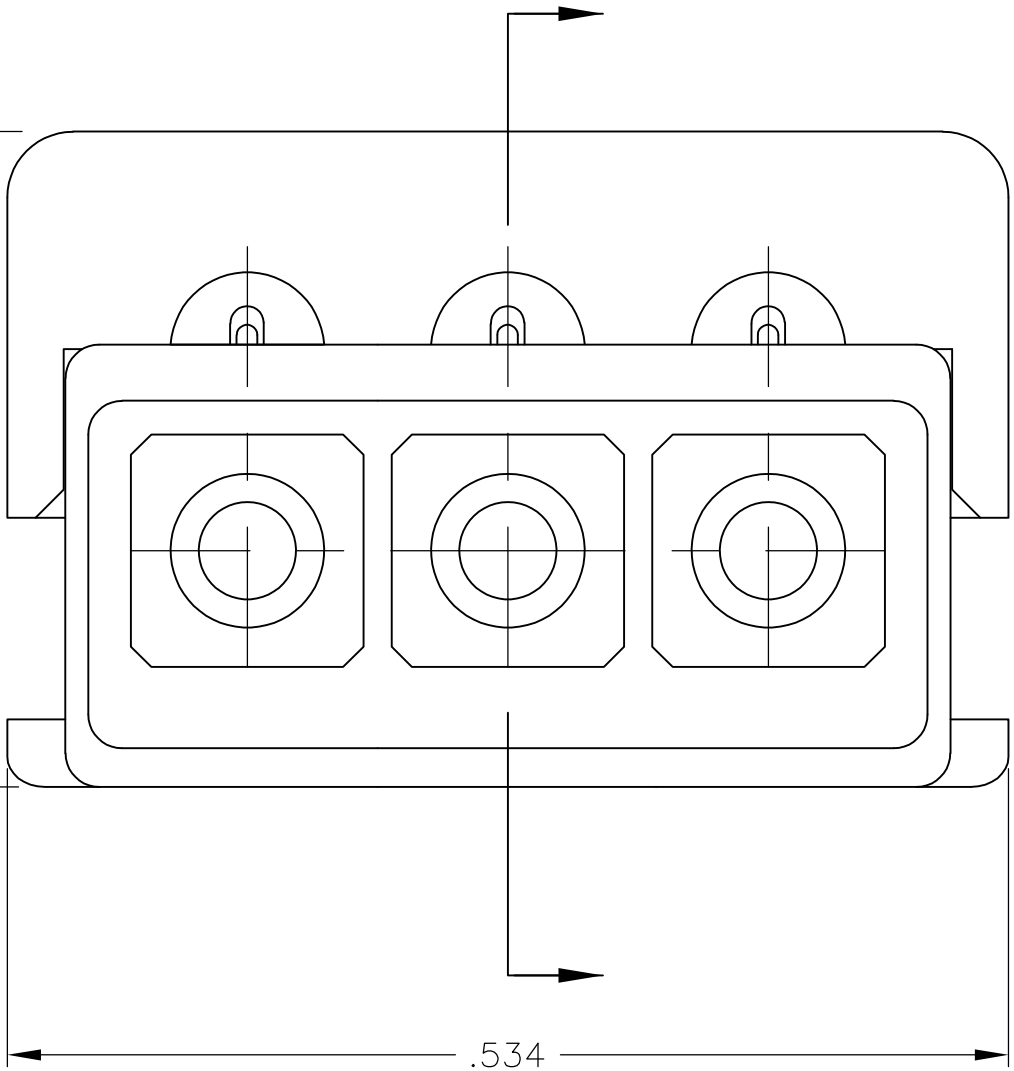
TERMINAL HOUSING



WIRE ENTRY HOUSING

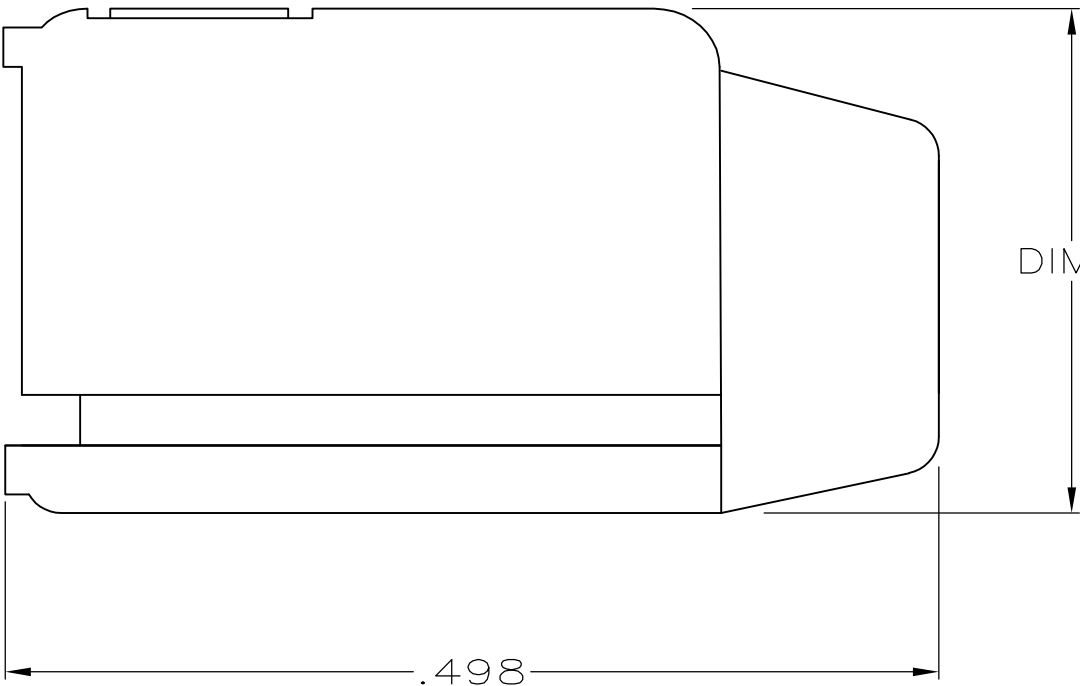


.360
.350



.534

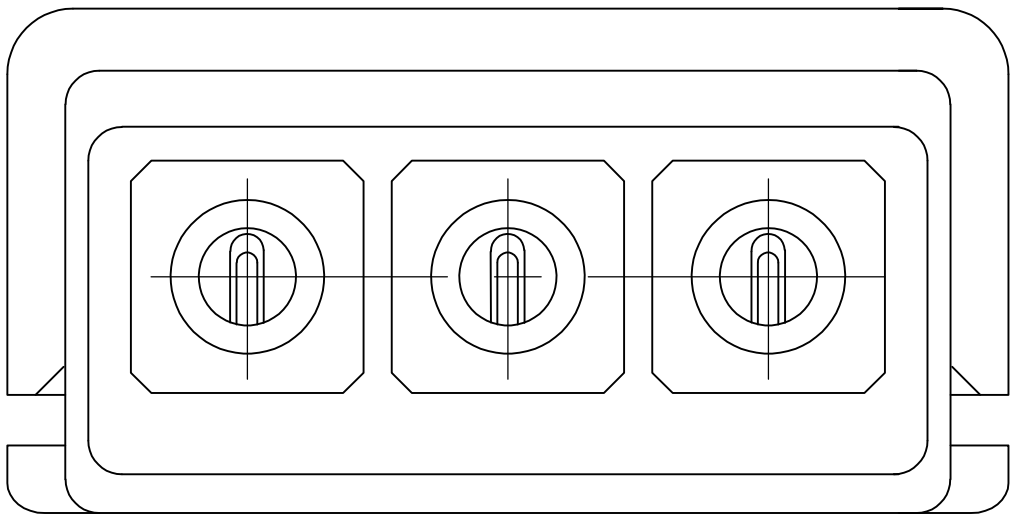
UNCRIMPED



DIM A



.498

CRIMPED



1. WIRE RANGE: 19-26 AWG SOLID COPPER CONDUCTORS.
- 2 MATERIAL: HOUSING - THERMOPLASTIC (CLEAR)
TERMINAL - TIN PLATED PHOSPHOR BRONZE
- 3 SEALANT ADDED TO HOUSING IN THREE AREAS.
4. ALL DIMENSIONS ARE FOR REFERENCE ONLY.
5. FOR CRIMPING INFORMATION SEE APPLICATION SPECIFICATION 114-6010.
- 6 TEL-SPLICE ASSEMBLIES WITHOUT SEALANT (UNFILLED) SHALL BE YELLOW.

SUPSD BY 1-552678-2	100	WITH SEALANT	1-552678-7
	100	WITH SEALANT	1-552678-6
OBSOLETE	BULK	6 WITHOUT SEALANT	1-552678-5
	100	6 WITHOUT SEALANT	1-552678-4
OBSOLETE	100	WITH SEALANT	1-552678-2
	BULK	WITH SEALANT	552678-5
SUPSD BY 552678-2	500	6 WITHOUT SEALANT	552678-4
	500	6 WITHOUT SEALANT	552678-3
	500	WITH SEALANT	552678-2
PARTS PER CONTAINER		DESCRIPTION	PART NUMBER

THIS DRAWING IS A CONTROLLED DOCUMENT.		DWN L. HALL 20FEB04		 Tyco Electronics Corporation Harrisburg, Pa 17105-3608			
DIMENSIONS: INCHES		CHK A. KINKA 24FEB04					
		APVD A. KINKA 24FEB04		NAME TEL-SPLICE ASSEMBLY, 3 WIRE (INTERNATIONAL) —			
		PRODUCT SPEC —					
		APPLICATION SPEC —					
		WEIGHT —					
MATERIAL — 2		FINISH —		SIZE A2	CAGE CODE 00779	DRAWING NO C=552678	RESTRICTED TO —
CUSTOMER DRAWING				SCALE 10:1	SHEET 1 of 1	REV Y	

.262	24-26
.276	19-22
DIM "A" MAX	WIRE-AWG