

LOC		DIST		REVISONS			
P	LTR	DESCRIPTION		DATE	OWN	APVD	
A		RLSD - NSD02-114		09DEC02	GG	CD	
B		REV-EC 0B40-0106-03		09JUN03	LH	CD	
C		REV-EC 0B40-0187-04		25AUG2004	LH	CC	

△ DIMENSIONS ARE NOMINAL UNLESS OTHERWISE SPECIFIED.

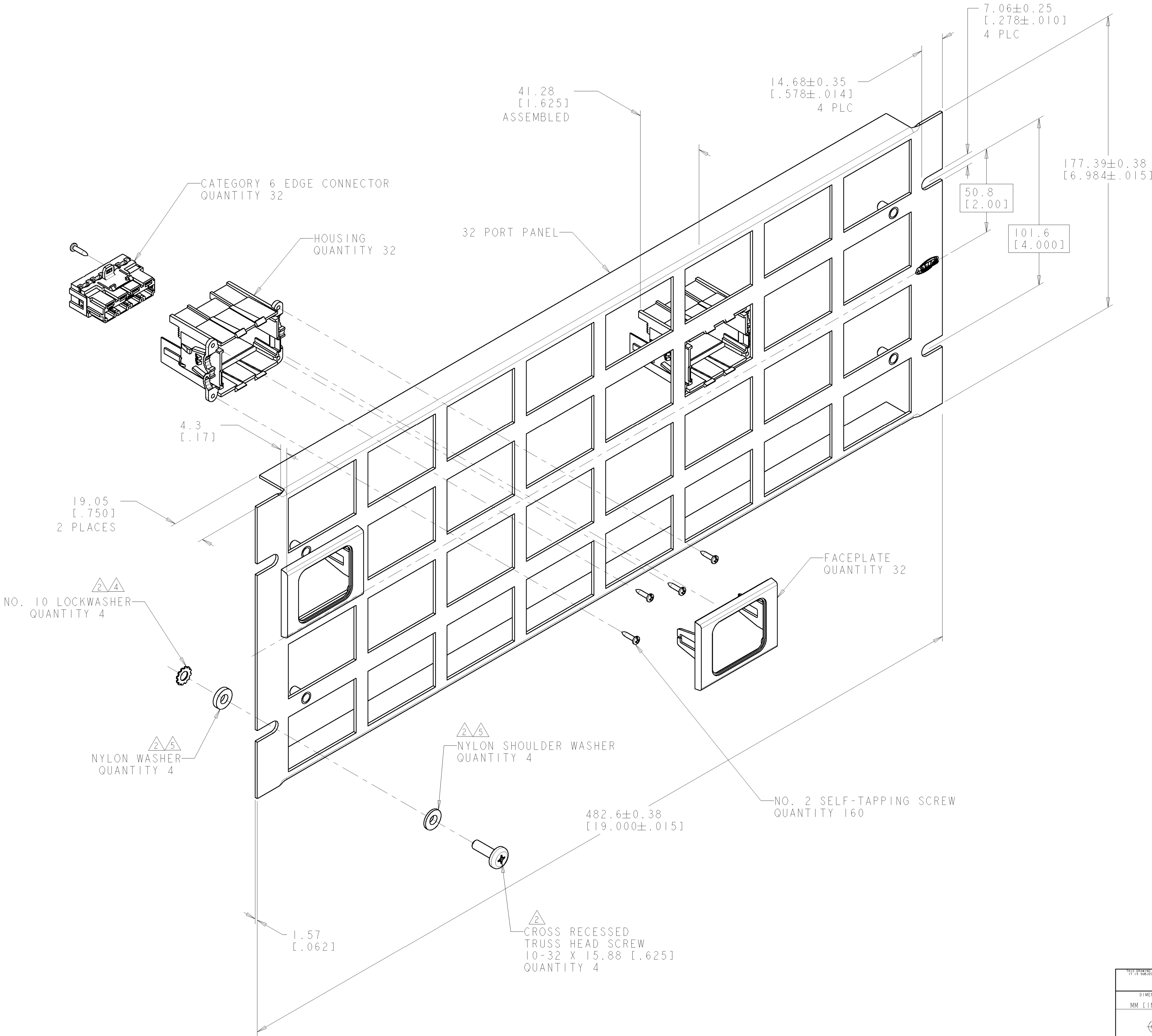
△ PANEL - SHIPPED ASSEMBLED EXCEPT HARDWARE USED FOR MOUNTING TO RACK SHIPPED LOOSE. EDGE CONNECTOR COVERS AND FACEPLATES SHIPPED LOOSE.

△ MATERIAL : PANEL - ZINC PLATED CARBON STEEL, BLACK.
HOUSING - ABS MOLDING COMPOUND, BLACK.
EDGE CONNECTOR HOUSING - ABS MOLDING COMPOUND, NICKEL PLATED.
EDGE CONNECTOR COVER - POLYCARBONATE MOLDING COMPOUND, NICKEL PLATED (Ni+Cu+Ni)
EDGE CONNECTOR TERMINALS - PHOSPOR BRONZE WITH GOLD PLATE OVER NICKEL PLATE IN CONTACT AREA AND TIN OVER NICKEL UNDERPLATE IN TERMINATION AREA
CONNECTION MODULE - POLYCARBONATE MOLDING COMPOUND, GRAY.
FACEPLATE - ABS MOLDING COMPOUND, BLACK.
SCREWS - ZINC PLATED STEEL.
FLAT AND SHOULDER WASHERS - NYLON.
LOCKWASHER - STAINLESS STEEL

△ FOR GROUNDING PANEL TO RACK, USE ONLY THE STAINLESS STEEL LOCK WASHERS.

△ FOR ISOLATING PANEL FROM RACK, USE ONLY NYLON WASHERS.

△ PANEL HAS FOUR STAINLESS STEEL GROUNDING STUDS ON REAR OF PANEL FOR OPTIONAL GROUND LUGS.



1479313-1 PART NUMBER			
DIMENSIONS: MM [INCHES]		TOLERANCES UNLESS OTHERWISE SPECIFIED:	
9 PLC ±		△	
1 PLC ±		△	
2 PLC ±		△	
3 PLC ±		△	
4 PLC ±		△	
ANGLES		±	
MATERIAL		FINISH	
△ 3 △ 6		△ 3	
DWN G. GARRETT EKM L. SMITH APVD C. DOOLEY		31OCT2002 09DEC2002 09DEC2002	
tyco Electronics		Tyco Electronics Harrisburg, PA 17105-3608	
NAME		ASSEMBLY, PANEL, 32 PORT, UNSHIELDED, AMP COMMUNICATIONS OUTLET, CATEGORY 6	
PRODUCT SPEC		APPLICATION SPEC	
408-8700		WEIGHT	
A 00779		C=1479313	
CUSTOMER DRAWING		SCALE 1:1 SHEET 1 OF 1 REV C	