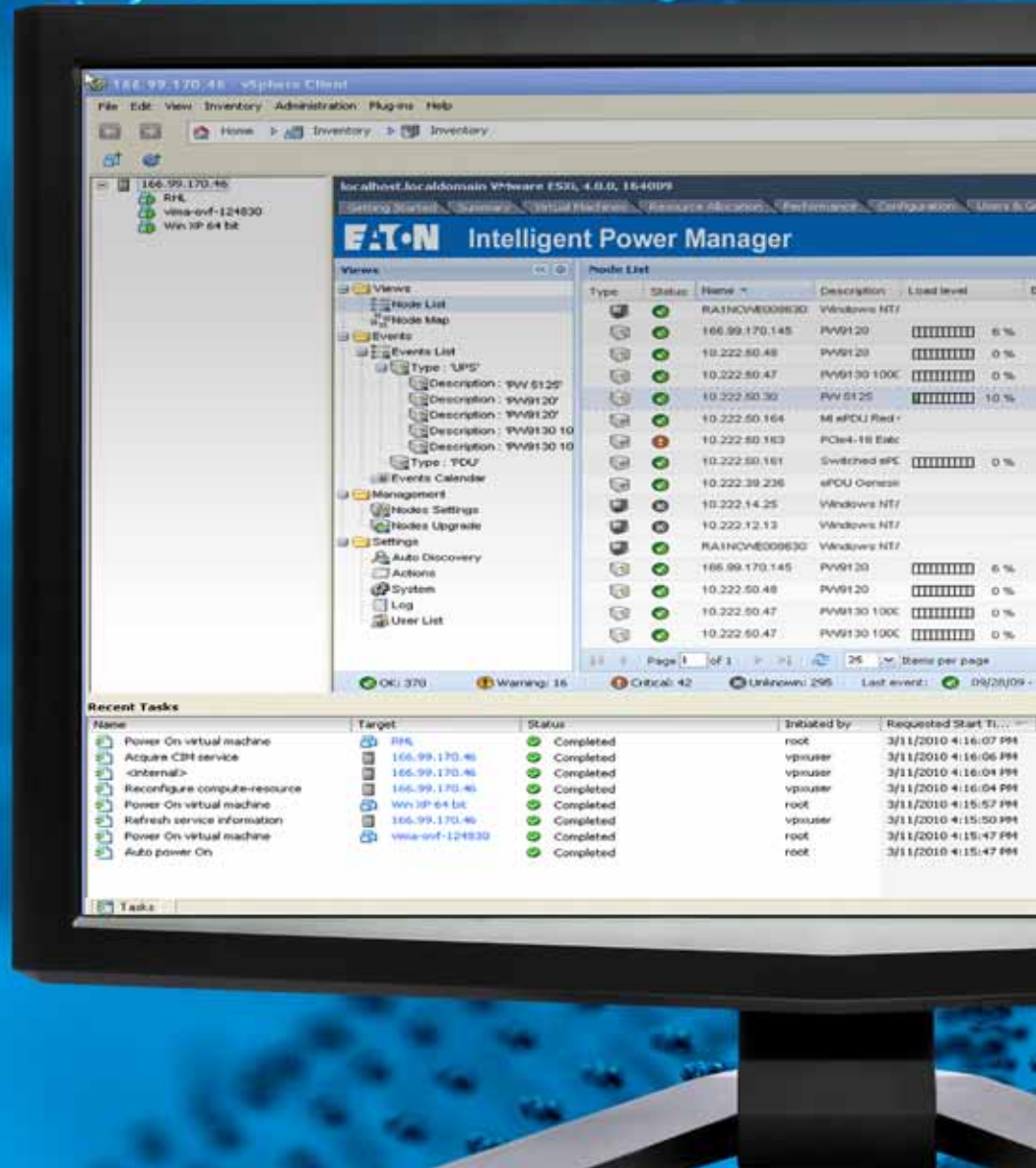


# Intelligent Power Software Suite

- Intelligent Power Manager for monitoring
- Intelligent Power Protector for shutdown



Powering Business Worldwide

## Intelligent Power Software Suite Snapshot

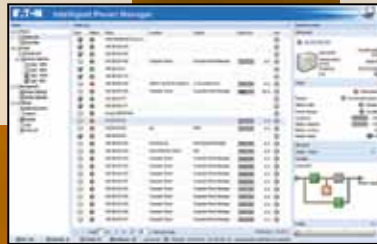


- **Intelligent Power Manager:** software for extensive monitoring and management



- **Intelligent Power Protector:** shutdown software for extended power outages

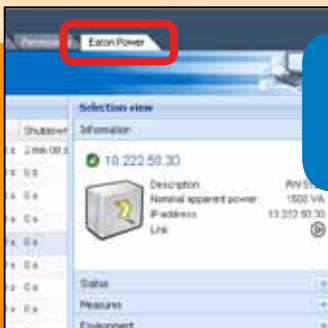
Use each software independently or as a powerful combination. Together with your UPS, they provide end-to-end power management for maximum uptime and data integrity.



Visit [www.eaton.com/intelligentpower](http://www.eaton.com/intelligentpower) to view the software demos.

## Benefits for virtualized environments

- Intelligent Power Manager's integration with platforms like vCenter and XenCenter™ helps data center managers reduce infrastructure and operating costs while increasing uptime, productivity and operational responsiveness.
  - View critical power information on devices including UPSs, ePDUs and environmental sensors from the vCenter or XenCenter dashboard
  - Instantly access critical information, such as UPS battery condition, load levels and battery runtime
  - Remotely and gracefully shut down servers in clusters during an extended power outage
  - Trigger vMotion, XenMotion™ and other migration applications to transparently move virtual machines to an available server on the network
  - Monitor power usage and kWh to help you calculate your power usage effectiveness (PUE) and identify where to cut costs



View all connected power devices from the Eaton Power tab in your vCenter or XenCenter dashboard

## Intelligent Power Software Suite

**Eaton's Intelligent Power® Software Suite** incorporates two important applications for ensuring quality power and uptime: remote monitoring and management of power devices across the network and automatic, graceful shutdown when faced with an extended power outage.

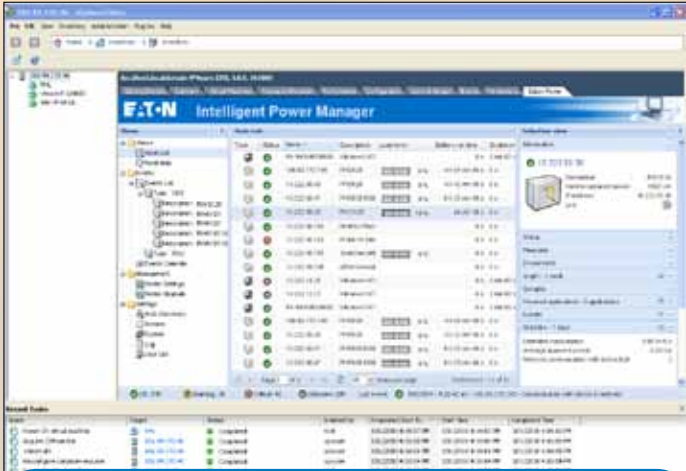
**Intelligent Power Manager** supervisory software lets you monitor and manage multiple power and environmental devices across the network from a single interface, giving you up-to-the-minute information on the status of power in your network. It also works seamlessly with VMware's vCenter Server™ and vMotion™ as well as other platforms and migration applications.

**Intelligent Power Protector** protection software provides graceful, automatic shutdown of network devices during a prolonged power disruption, preventing data loss and saving work-in-progress. As part of Eaton's power network management system, these two applications work together to deliver comprehensive power management and protection.

**Both software programs are compatible with virtualization platforms from VMware®, Microsoft®, Red Hat® and Xen®.**

[eaton.com/virtualization](http://eaton.com/virtualization)

# Intelligent Power Manager



**Intelligent Power Manager facilitates easy and versatile remote monitoring and management of multiple devices, keeping you apprised of power and environmental conditions**

When it comes to managing power on your network, one missed anomaly or malfunctioning power device brings everything to a halt. Keeping an eye on the status of power devices across the network, and intervening before a blip cascades into a catastrophe, is a top priority.

Eaton's Intelligent Power Manager brings managing a wide range of power and environmental devices under control through a single, Web-based interface. This versatile software solution is compatible with network-enabled power devices, including Eaton UPSs, non-Eaton UPSs, environmental sensors and ePDUs. In addition, Intelligent Power Manager is the first power management software to not only integrate with VMware's vCenter, letting you manage power to your virtualized environment through the vCenter dashboard, but also to enable the remote shutdown of servers in clusters. Intelligent Power Manager even integrates with several virtualization platforms allowing ease of management and live migration, which will transparently move virtual machines from a server affected by a power interruption to a non-affected server on the network, maintaining data integrity with no downtime.

# Features

- Monitor and manage multiple power and environmental devices from any Internet browser or your virtual machine management dashboard
- User-definable tree structure enables grouping, access and management of multiple devices across multiple locations
- Power consumption monitoring helps you track ways to improve both energy efficiency and PUE
- Auto discovery provides fast installation by automatically detecting devices on the network
- Mass-upgrading of firmware capability reduces network management card setup and maintenance time
- Power device asset management tracks moves, adds and changes of equipment
- SNMP devices are visible and their individual Web interfaces are accessible for editing and configuration
- Multiple password-protected access levels and support for secure communications
- All the functionality of an enterprise-class monitoring solution for free or at a fraction of the cost

# Edition chart

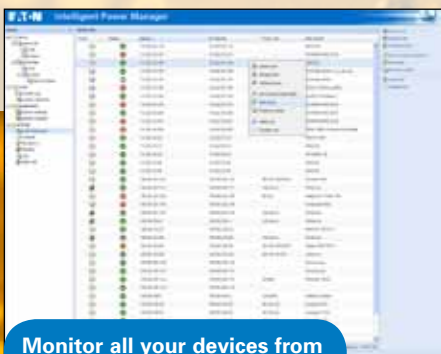
Models	Part number
Intelligent Power Manager: support for 1-10 IP addresses	free download
Silver edition: support for 11-100 IP addresses	66925
Gold edition: support for unlimited IP addresses	66926

**Supported operating systems include: x86 processor, Windows 2000/XP(Home or Pro)/2003/Vista/2008/7**

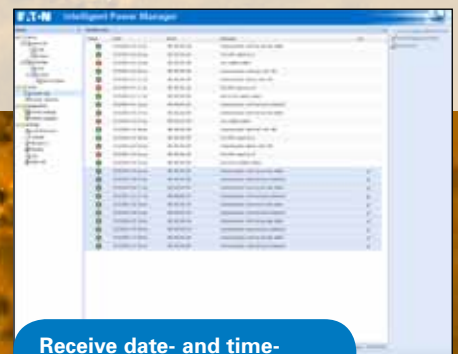
**Download Intelligent Power Manager from [www.eaton.com/intelligentpower](http://www.eaton.com/intelligentpower)**



**See all devices, even globally, from any PC on the network**



**Monitor all your devices from one location**

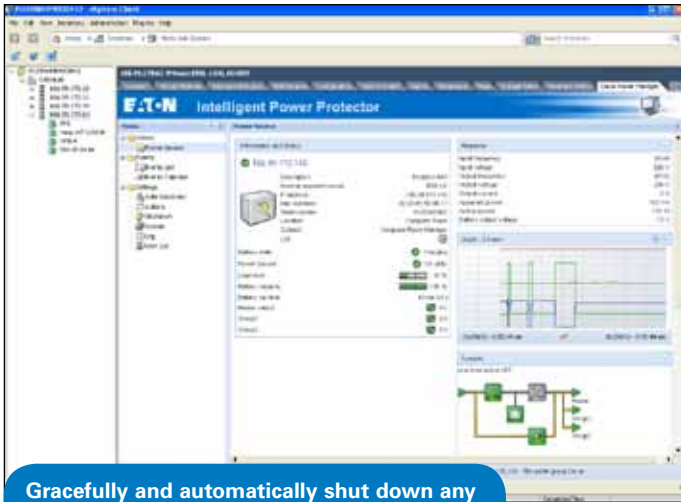


**Receive date- and time-stamped event notifications**

## Intelligent Power Protector

Most UPS applications are designed to protect your network devices from power anomalies, including surges, sags and frequency variations. But when the power goes out for longer than your available battery runtime, Intelligent Power Protector software facilitates automatic, graceful shutdown of computers, servers and network devices powered by a UPS, saving all work-in-progress and ensuring data integrity.

Intelligent Power Protector's versatile user interface shows you detailed information about connected servers and UPSs through USB and serial or network communication. The software has a clear, easy-to-use, multilingual interface available on any PC with a Web browser.



Intelligent Power Protector is a free download from Eaton at [www.eaton.com/intelligentpower](http://www.eaton.com/intelligentpower).



UNITED STATES  
8609 Six Forks Road  
Raleigh, NC 27615 U.S.A.  
Toll Free: 1.800.356.5794

[www.eaton.com/intelligentpower](http://www.eaton.com/intelligentpower)

CANADA  
Ontario: 416.798.0112

LATIN AMERICA  
Brazil: 55.11.3616.8500  
Caribbean: 1.949.452.9610  
México & Central America:  
52.55.9000.5252  
South Cone: 54.11.4343.6323

EUROPE/MIDDLE EAST/AFRICA  
Denmark: 45.3686.7910  
Finland: 358.94.52.661  
France: 33.1.6012.7400  
Germany: 49.0.7841.604.0  
Italy: 39.02.66.04.05.40  
Norway: 47.23.03.65.50  
Portugal: 55.11.3616.8500  
Sweden: 46.8.598.940.00  
United Kingdom: 44.1753.608.700

ASIA PACIFIC  
Australia/NZ: 61.2.9693.9366  
China: 86.21.6361.5599  
HK/Korea/Taiwan: 852.2745.6682  
India: 91.11.2649.9414 to 18  
Singapore/SEA: 65.6829.8888

Eaton, Intelligent Power, BladeUPS and ePDU are trade names, trademarks and/or service marks of Eaton Corporation or its subsidiaries and affiliates.

All other trademarks are property of their respective owners.

©2011 Eaton Corporation  
All Rights Reserved  
Printed in USA  
SFT36FXA  
September 2011

## Features

- Helps you avoid data loss by gracefully shutting down computers and virtual machines/servers powered by an Eaton UPS during an extended power outage
- Watchdog capability keeps kiosks with a PC or server running smoothly by automatically identifying hang-ups and rebooting the machine
- Provides redundancy capability for dual-cord servers
- Easy-to-use interface from any PC with a Web browser
- Acquires UPS information through local or network communication and can be easily deployed on many computers
- Can be remotely managed, configured and updated with Eaton's Intelligent Power Manager
- Can communicate with the protected device directly (via USB) or through the network (via Web/SNMP card)

## Eaton offers the best total solution for virtualized environments

### Suggested Bundle:

- Eaton BladeUPS®, 5PX or 9130 UPS
- ConnectUPS Web/SNMP card
- Intelligent Power Manager software (free for up to 10 IP addresses)
- Intelligent Power Protector (free)