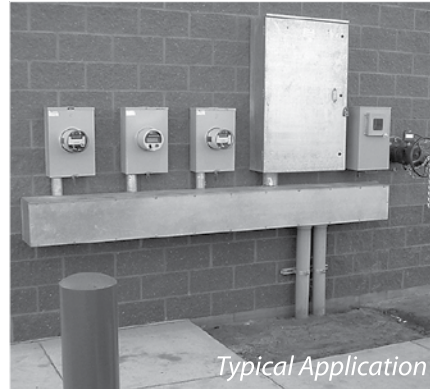


Wiring Troughs

EconoTrough, NEMA Type 3R



Industry Standards

UL 870 Listed; File No. E27524; Raintight
cUL CSA C22.2 No. 26 Listed; File No. E27524; Raintight

NEMA/EEMAC Type 3R
IEC 60529, IP 32

Application

The EconoTrough meets basic functionality requirements for outdoor applications that may be exposed to wet conditions. A Padlock Hasp Kit can be installed for increased security.

Features

- Drip-shield top covers sides, front and back
- Removable cover
- Embossed mounting holes on back of enclosure
- Provision for utility seal
- No gasketing or knockouts
- Padlock Hasp Kit available

Specifications

- 16 or 14 gauge galvanized steel

Finish

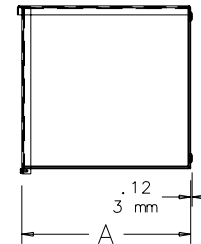
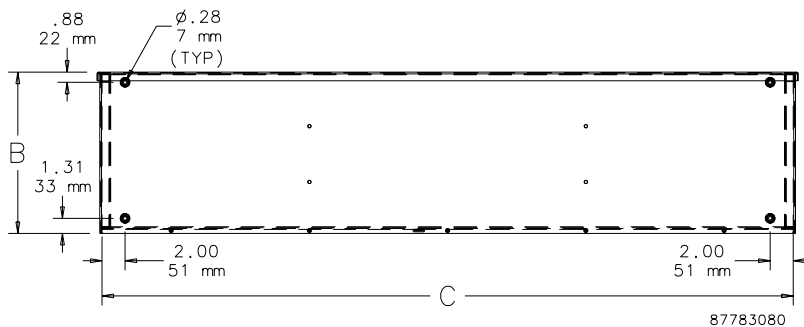
Unpainted galvanized steel

Accessories

See also *Accessories*.

Padlock Hasp Kit

Bulletin: F40GT, F40PT



87783080

Wiring Troughs

Standard Product

Catalog Number	AxBxC (in.)	AxBxC (mm)	Gauge
F4412RTGV	4.00 x 4.00 x 12.00	102 x 102 x 305	16
F4424RTGV	4.00 x 4.00 x 24.00	102 x 102 x 610	16
F4436RTGV	4.00 x 4.00 x 36.00	102 x 102 x 914	16
F4448RTGV	4.00 x 4.00 x 48.00	102 x 102 x 1219	16
F4460RTGV	4.00 x 4.00 x 60.00	102 x 102 x 1524	16
F4472RTGV	4.00 x 4.00 x 72.00	102 x 102 x 1829	16
F6612RTGV	6.00 x 6.00 x 12.00	152 x 152 x 305	16
F6618RTGV	6.00 x 6.00 x 18.00	152 x 152 x 457	16
F6624RTGV	6.00 x 6.00 x 24.00	152 x 152 x 610	16
F6636RTGV	6.00 x 6.00 x 36.00	152 x 152 x 914	16
F6648RTGV	6.00 x 6.00 x 48.00	152 x 152 x 1219	16
F6660RTGV	6.00 x 6.00 x 60.00	152 x 152 x 1524	16
F6672RTGV	6.00 x 6.00 x 72.00	152 x 152 x 1829	16
F8812RTGV	8.00 x 8.00 x 12.00	203 x 203 x 305	14
F8824RTGV	8.00 x 8.00 x 24.00	203 x 203 x 610	14
F8836RTGV	8.00 x 8.00 x 36.00	203 x 203 x 914	14
F8848RTGV	8.00 x 8.00 x 48.00	203 x 203 x 1219	14
F8860RTGV	8.00 x 8.00 x 60.00	203 x 203 x 1524	14
F8872RTGV	8.00 x 8.00 x 72.00	203 x 203 x 1829	14
F8896RTGV	8.00 x 8.00 x 96.00	203 x 203 x 2438	14
F88116RTGV	8.00 x 8.00 x 116.00	203 x 203 x 2946	14
F101024RTGV	10.00 x 10.00 x 24.00	254 x 254 x 610	14
F101036RTGV	10.00 x 10.00 x 36.00	254 x 254 x 914	14
F101048RTGV	10.00 x 10.00 x 48.00	254 x 254 x 1219	14
F101060RTGV	10.00 x 10.00 x 60.00	254 x 254 x 1524	14
F101072RTGV	10.00 x 10.00 x 72.00	254 x 254 x 1829	14
F101096RTGV	10.00 x 10.00 x 96.00	254 x 254 x 2438	14
F1010116RTGV	10.00 x 10.00 x 116.00	254 x 254 x 2946	14
F121224RTGV	12.00 x 12.00 x 24.00	305 x 305 x 610	14
F121236RTGV	12.00 x 12.00 x 36.00	305 x 305 x 914	14
F121248RTGV	12.00 x 12.00 x 48.00	305 x 305 x 1219	14
F121260RTGV	12.00 x 12.00 x 60.00	305 x 305 x 1524	14
F121272RTGV	12.00 x 12.00 x 72.00	305 x 305 x 1829	14
F121284RTGV	12.00 x 12.00 x 84.00	305 x 305 x 2134	14
F121296RTGV	12.00 x 12.00 x 96.00	305 x 305 x 2438	14
F1212116RTGV	12.00 x 12.00 x 116.00	305 x 305 x 2946	14
F141448RTGV	14.00 x 14.00 x 48.00	356 x 356 x 1219	14
F141472RTGV	14.00 x 14.00 x 72.00	356 x 356 x 1829	14
F141484RTGV	14.00 x 14.00 x 84.00	356 x 356 x 2134	14
F141496RTGV	14.00 x 14.00 x 96.00	356 x 356 x 2438	14
F1414116RTGV	14.00 x 14.00 x 116.00	356 x 3065 x 2946	14

Padlock Hasp Kit



Provides a means to padlock NEMA Type 3R trough. Includes mounting screws.

Bulletin: F40GT

Catalog Number	Description	Kit Qty.
APLK3R	Padlock Hasp	1