

INLINE™ Enclosures

INLINE™ Landscape, Type 4 and 12



Application

When applications require mounting electrical components the full width of an enclosure, the landscape orientation of this aesthetic INLINE™ Enclosure makes it possible. Full-width mounting brackets can be drilled anywhere along their length, providing maximum mounting flexibility.

Specifications

- Metric dimensions
- 16 gauge steel
- Seams continuously welded and ground smooth
- External formed body flange
- Large body opening
- External wall-mounting brackets
- Seamless foam-in-place gasket
- Bonding provision on door
- Grounding stud on body
- Includes panel mounting screws and grounding hardware
- Hinged door with removable hinge pins
- Self-grounding quarter-turn latches
- Door opens 180 degrees
- Window door models include flush-mounted 3/16-in. (4.8-mm) clear polycarbonate window

Finish

Textured light-gray RAL 7035 polyester powder coating inside and out

Accessories

- See also *Accessories*.
- DIN Rail or Panel-Mounting Brackets
 - DIN3 Rails
 - Grounding Kit
 - Lock Inserts
 - Mounting-Bracket Kit
 - Panels for Junction Boxes
 - Wing Knob Latch

Modification and Customization

Hoffman excels at modifying and customizing products to your specifications. Contact your local Hoffman sales office or distributor for complete information.

Bulletin: A54

Industry Standards

Solid Door Enclosures:

UL 508A Listed; Type 3, 4, 12; File No. E61997
 cUL Listed per CSA C22.2 No. 94; Type 3, 4, 12; File No. E61997

NEMA/EEMAC Type 3, 4, 12
 CSA File Number 42186: Type 4, 12
 IEC 60529, IP66

Window Door Enclosures:

UL 508A Listed; Type 3, 4, 12; File No. E61997

NEMA/EEMAC Type 12
 CSA File Number 42186: Type 3, 4, 12
 IEC 60529, IP66

Standard Product **Hinged Solid Door**

Catalog Number	AxBxC in./mm	Mounting Studs J mm/in.	Clear Space Above Panel mm/in.
LHC233116	9.06 x 12.20 x 6.10	265	140
	230 x 310 x 155	10.45	5.51
LHC234616	9.06 x 18.11 x 6.10	416	140
	230 x 460 x 155	16.36	5.51
LHC236016	9.06 x 23.62 x 6.10	556	140
	230 x 600 x 155	21.88	5.51
LHC237716	9.06 x 30.32 x 6.10	726	140
	230 x 770 x 155	28.57	5.51
LHC239316	9.06 x 36.42 x 6.10	881	140
	230 x 925 x 155	34.67	5.51

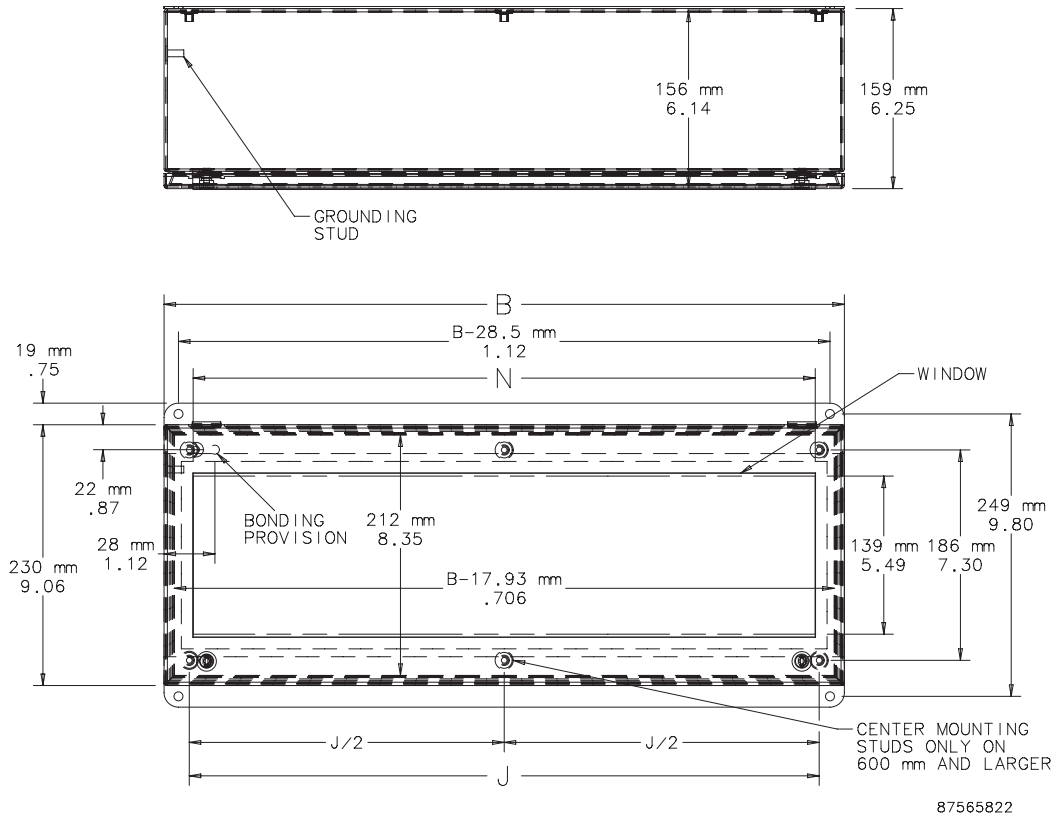
Enclosures are hinged on "B" side.

Purchase panels separately.

INLINE™ Enclosures

Standard Product Hinged Window Door

Catalog Number	AxBxC in./mm	Window Size N mm/in.	Mounting Studs J mm/in.	Clear Space Above Panel mm/in.
LWC233116	9.06 x 12.00 x 6.10	259	265	140
	230 x 310 x 155	10.20	10.45	5.51
LWC234616	9.06 x 18.11 x 6.10	409	416	140
	230 x 460 x 155	16.11	16.36	5.51
LWC236016	9.06 x 23.62 x 6.10	549	556	140
	230 x 600 x 155	21.62	21.88	5.51
LWC237716	9.06 x 30.32 x 6.10	719	726	140
	230 x 770 x 155	28.31	28.57	5.51
LWC239316	9.06 x 36.42 x 6.10	874	881	140
	230 x 925 x 155	34.42	34.67	5.51



Optional Components Selection Table

This table shows which optional components will fit the various sizes of **INLINE™ Landscape, Type 4 and 12**.

Bulletin: A54

Catalog Number	AxBxC in./mm	Window Door Enclosure	Panel	Conductive Panel	DIN Rail or Panel Mounting Bracket
LHC233116	9.06 x 12.20 x 6.10	LWC233116	LP2331	LP2331G	LMK23
	230 x 310 x 155				
LHC234616	9.06 x 18.11 x 6.10	LWC234616	LP2346	LP2346G	LMK23
	230 x 460 x 155				
LHC236016	9.06 x 23.62 x 6.10	LWC236016	LP2360	LP2360G	LMK23
	230 x 600 x 155				
LHC237716	9.06 x 30.32 x 6.10	LWC237716	LP2377	LP2377G	LMK23
	230 x 770 x 155				
LHC239316	9.06 x 36.42 x 6.10	LWC239316	LP2393	LP2393G	LMK23
	230 x 925 x 155				

The catalog numbers in the first column are solid door enclosures.

600-mm and wider enclosures require two sets of brackets for mounting panels.