




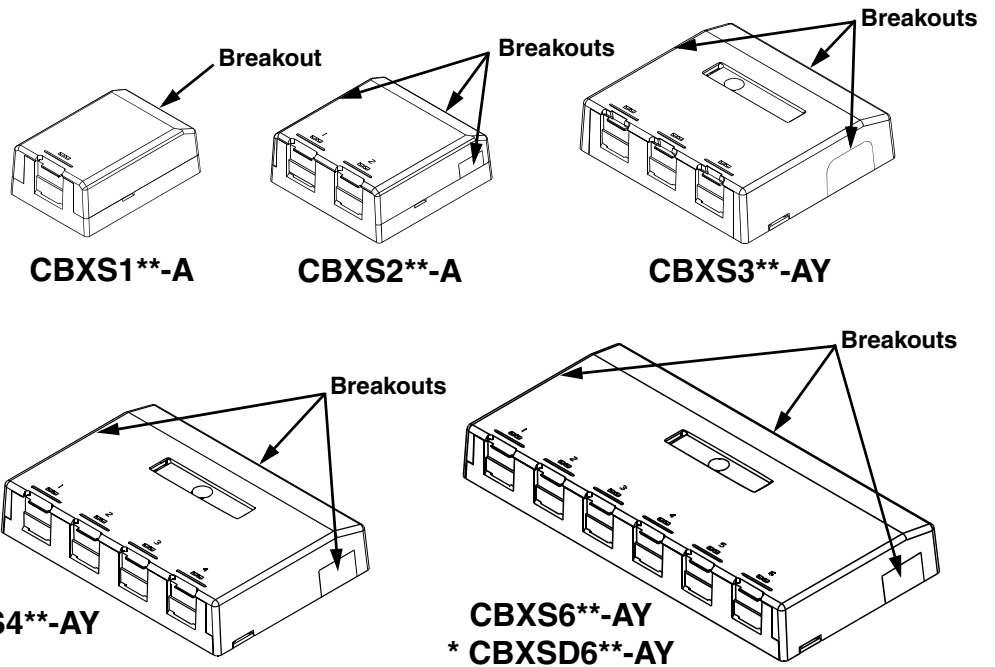
MINI-COM Shuttered Surface Mount Boxes

Part Numbers: CBXS1**-A, CBXS2**-A, CBXS3**-AY, CBXS4**-AY, CBXS6**-AY, CBXSD6**-AY

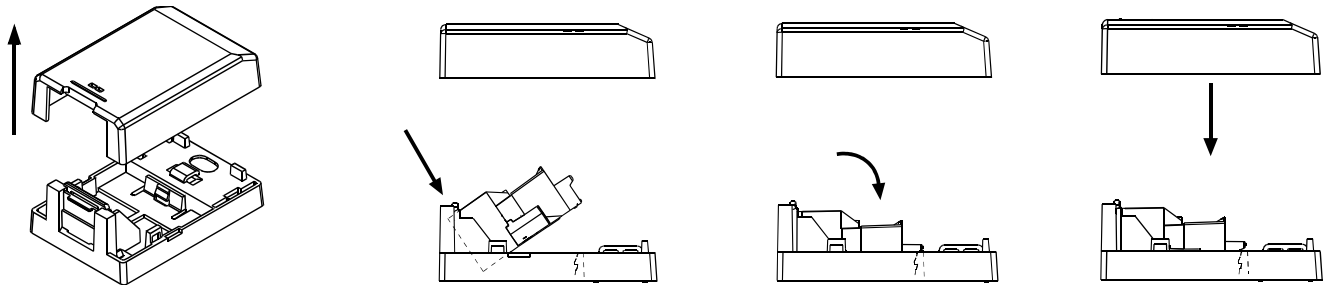
© Panduit Corp. 2008

INSTALLATION INSTRUCTIONS PN235E

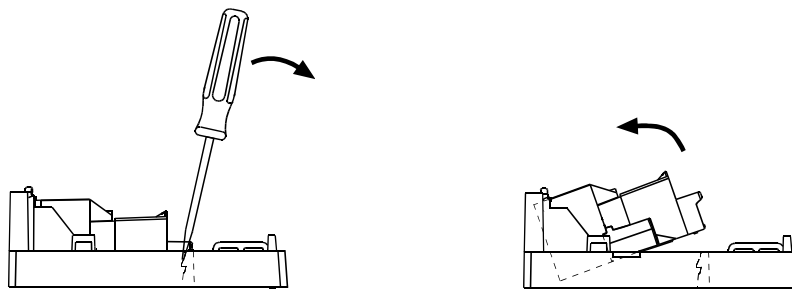
Part No.	Raceway Suitable for Breakouts	
CBXS1**-A	LD5 / LDP5	
CBXS2**-A	LD5 / LDP5	
CBXS3**-AY	LD5 / LDP5	
CBXS4**-AY	LD3 / LDP3 LD5 / LDP5	
CBXS6**-AY	LD3 / LDP3 LD5 / LDP5	
CBXSD6**-AY	LD5 / LDP5 LD10 / LDP10	



INSTALLATION



REMOVAL



* Includes Bend Radius Control Bridge

** Denotes Color

For Instructions in Local Languages
and Technical Support:

www.panduit.com/resources/install_maintain.asp



www.panduit.com

E-mail:
cs@panduit.com

Fax:
(708) 444-6993